

文件下载自万友教育网站

版权归学校所有

www.oneuedu.com

万友优势 ADVANTAGE



客户信息私密性

录入系统后自动设置权限，除专属的案件专员其他内部人员及外部人员不可见



精英团队

文案专员为每位学生一对一定制专属方案，移民律师外部协助。团队为学生带来高质量服务



学生案件更新通知

当文案专员每完成一步，会更新在万友系统中，客户会以邮件的形式收到步骤更新通知，查看自己案件的最新进程



全程服务透明

无押金等不必要条款，客户案件信息透明，收费项会在案件开始前与客户协商一致，案件开始后无特殊意外情况，不会产生收费项目

提供服务 PROVIDE SERVICES

学校
查询

课程
查询

学生
签证

留学
准备

出发
准备

绿卡
资讯



详细流程请扫码
添加客服为您解答



Undergraduate *Guide 2023*

for domestic students



“Brilliant careers start with a transformational education at the University of Sydney.”

Professor Mark Scott AO
Vice-Chancellor and Principal



We acknowledge the tradition of custodianship and law of the Country on which the University of Sydney campuses stand. We pay our respects to those who have cared and continue to care for Country.

**Leadership
for good
*starts here***

2023

Welcome to *Sydney*

IMPORTANT EVENTS AND DATES

Open Day Saturday 27 August 2022 openday.sydney.edu.au	Info Day December 2022 infoday.sydney.edu.au	Semester starts Late February 2023 sydney.edu.au/key-dates
--	--	--



Join us

Discover why our graduates are ranked 1st in Australia and 4th in the world for graduate employability.*

Why choose Sydney	2
The Sydney Undergraduate Experience	4
Combined Bachelor of Advanced Studies	6
Shared pool of majors and minors.....	8
Collaborate with industry and community partners	10
Become a Dalyell Scholar	11
The world is your campus.....	12
Open Learning Environment	15
Which career is right for me?.....	16
Scholarships	18
Student accommodation	19
University life.....	20
Student support services	21

How to apply

Find out how to begin your journey to Sydney.

Uni terminology	24
Important dates.....	26
How to apply.....	27
Aboriginal and Torres Strait Islander students.....	28
Adjustment factors and entry schemes	30
Fees and costs	33

Areas of study

Explore the breadth and depth of our course offerings, spanning over 400 study areas.

2023 Admissions Guide	36
Architecture, design and planning.....	38
Arts and social sciences.....	40
Business.....	44
Economics	46
Education and social work.....	48
Engineering and computer science.....	52
Law	58
Medicine and health	60
Music	66
Science	68
Table notes	72

* QS Graduate Employability Rankings 2022

Dates are subject to change. For the latest information, please check sydney.edu.au

Why choose Sydney?

Start your leadership journey and create a future with impact. Our flexible degree structures allow you to follow your interests while preparing you for a career full of opportunities.

100+

majors and minors to combine your interests across disciplines

250+

clubs and societies to make your uni experience unique

400+

study areas to design the right degree for you

60+

partner organisations to collaborate on real-world projects

\$135 million

in scholarships and prizes available for offer every year

250+

international partners and Australia's largest study abroad and exchange program

380,000

alumni to connect you with a worldwide network

1st

in Australia and 4th in the world for graduate employability*

top
40

in world university rankings**

1st

in Australia and 2nd in the world for making a positive impact on society***

* QS Graduate Employability Rankings 2022
** QS World University Rankings 2022
***Times Higher Education Impact Ranking 2021



The Sydney *undergraduate experience*

The University of Sydney experience is like no other in Australia. Our flexible degrees prepare you for a future full of possibilities.

Design your own degree to create the study path that's right for you

You can gain expertise in more than one field by choosing from our range of professional, specialist or liberal studies, and combined and double degrees.

Prepare for your future career by working with industry leaders

No matter what you choose to study, you'll have opportunities to undertake supported internships and work placements with industry leaders, so you'll graduate ready to start your career.

Extend your skills and expertise to gain a competitive edge

You can tackle advanced course and project work through our combined Bachelor of Advanced Studies degrees, and boost your personal and professional skills with units from our Open Learning Environment.

Challenge your academic and leadership abilities and build your networks

Our unique Dalyell Scholars stream allows high-achieving students to access enrichment opportunities and exclusive units of study and work alongside other talented peer leaders.

Gain international experience to increase your future employability

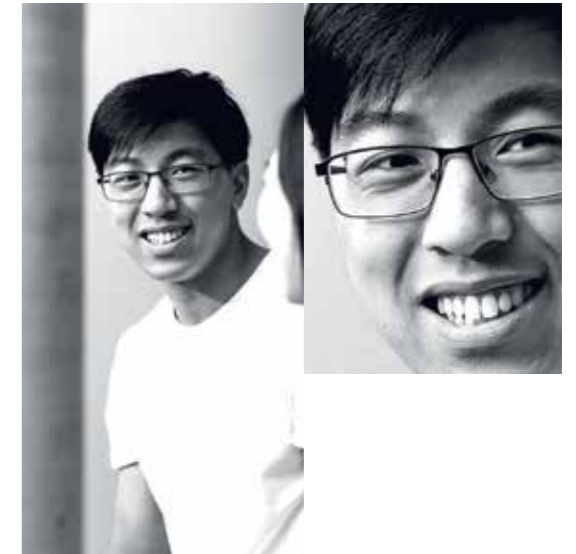
We offer the largest study abroad and exchange program in Australia, so you can take advantage of opportunities all around the world.

sydney.edu.au/ug-experience

"The learning isn't confined to the classroom. Through internships and hands-on experiences, I've been able to apply my knowledge through innovative solutions to industry problems."

Darren Zheng

Bachelor of Engineering Honours and
Bachelor of Project Management



"At the University of Sydney, I had complete control over how I completed my degree. The ultimate flexibility and wide range of career opportunities offered through world-class industry partnerships were the drawcards for me."

Daniel Kim

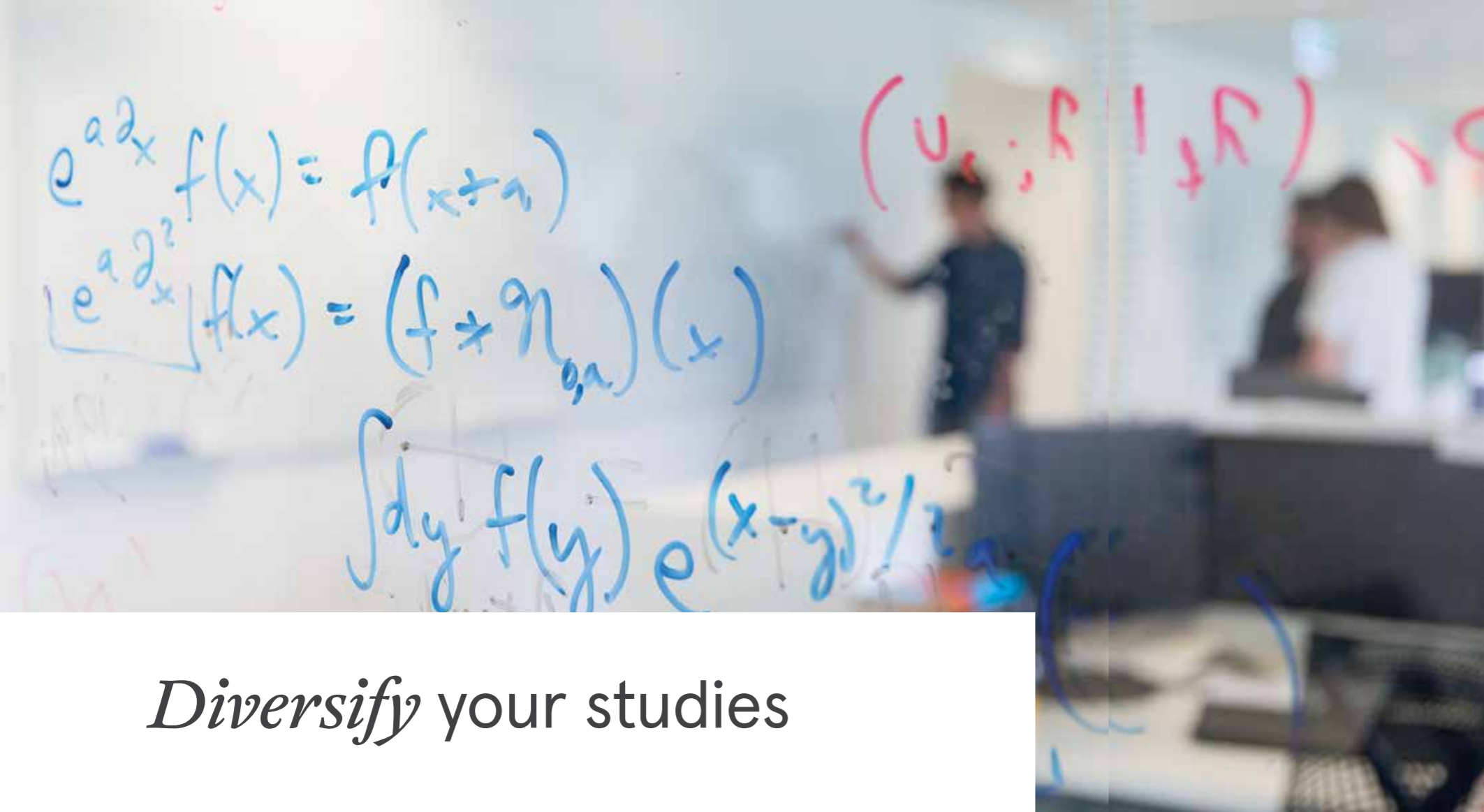
Bachelor of Commerce and
Bachelor of Advanced Studies

"The strong student life on campus really appealed to me. I have made lifelong friendships both in and out of my course – the people really make this place what it is!"

Ruby Williamson

Bachelor of Design in Architecture





Diversify your studies

COMBINED BACHELOR OF ADVANCED STUDIES

Set yourself apart when you enter the job market with specialist skills and experience.

You can combine any eligible bachelor's degree with our Bachelor of Advanced Studies, and graduate from two degrees with just one extra year of study.

You can tailor the Bachelor of Advanced Studies to your interests and goals by choosing a second major from the extensive range of subject areas in the shared pool. Then in your final year of study, you can extend your knowledge and critical thinking in one of two ways:

- **Advanced Coursework:** Undertake challenging, advanced units of study to deepen and apply your expertise. You will also build your professional networks and your problem-solving skills by working with one of our industry or community partners on a real-world project.
- **Honours*:** Develop your analytical skills and take the next step towards further research opportunities, such as a PhD. You'll complete an independent research project on a topic of your choosing, alongside related coursework to boost your research and discipline skills.



In the combined Bachelor of Advanced Studies, you will have the opportunity to ...



Customise your path with a flexible structure



Acquire novel skill combinations and explore other fields of study



Develop solutions to complex, real-world problems



Gain specialised knowledge in two fields



Consider an honours pathway for further study and research opportunities



Engage with industry and community partners

“I have multiple interests, and kept this in mind when designing my degree. The flexibility that a combined degree with the Bachelor of Advanced Studies offered was the perfect solution. I could satisfy multiple interests by undertaking a major and various OLE's that are separate to my main degree.”

Sydney Haddad
Bachelor of Design Computing and Bachelor of Advanced Studies

* Admission into the honours pathway is subject to meeting the required academic standards and entry criteria for honours. For honours study options outside those available in the Bachelor of Advanced Studies, see sydney.edu.au/courses

Follow your interests. *All of them.*

With more than 100 options to choose from, our shared pool of majors and minors allows you to explore a wide range of study areas.

If your course allows access to our shared pool of majors and minors, you could study a couple of units or even an entire major or minor in a field that would usually sit outside your degree.

For example, you could enjoy learning Korean while studying science, or complement a major in marketing with the study of design.



“This degree has really been a dream come true for me because I get the best of both worlds. I never thought I would be able to do both psychology and media studies, but I’m so grateful that I can now pursue both of my core passions at the same time.”

Adeline Chai
Bachelor of Arts and Bachelor of Advanced Studies



SHARED POOL OF MAJORS AND MINORS

Combine your primary major with a major or minor in one of the areas below.

Architecture, design and planning

- Design
- Urban Studies

Arts and social sciences

- American Studies
- Ancient Greek
- Ancient History
- Anthropology
- Arabic Language and Cultures
- Archaeology
- Art History
- Asian Studies
- Biblical Studies and Classical Hebrew
- Chinese Studies
- Criminology
- Cultural Studies
- Digital Cultures
- Diversity Studies*
- English
- European Studies
- Film Studies
- French and Francophone Studies
- Gender Studies
- Germanic Studies
- Hebrew (Modern)
- History
- Indigenous Studies
- Indonesian Studies
- International and Comparative Literary Studies
- International Relations
- Italian Studies
- Japanese Studies
- Jewish Civilisation, Thought and Culture

Business

- Accounting
- Banking**
- Business Analytics
- Business Information Systems
- Business Law
- Finance**
- Industrial Relations and Human Resource Management
- Innovation and Entrepreneurship
- International Business
- Management and Leadership
- Marketing

Economics

- Economic Policy*
- Economics

- Korean Studies
- Latin
- Linguistics
- Modern Greek Studies
- Philosophy
- Political Economy
- Politics
- Sanskrit*
- Social Policy*
- Socio-legal Studies
- Sociology
- Spanish and Latin American Studies
- Studies in Religion
- Theatre and Performance Studies
- Visual Arts
- Writing Studies*

- Econometrics
- Environmental, Agricultural and Resource Economics
- Financial Economics

Education and social work

- Education Studies

Engineering and computer science

- Computer Science
- Computer Systems
- Project Management
- Software Development

Medicine and health

- Anatomy and Histology
- Applied Medical Science
- Disability and Participation
- Health
- Hearing, Speech and Communication
- Immunology*
- Immunology and Pathology**
- Infectious Diseases
- Neuroscience
- Pathology*
- Pharmacology
- Physical Activity and Health
- Physiology

Music

- Digital Music
- Music

Science

- Animal Health, Disease and Welfare
- Animal Production
- Biochemistry and Molecular Biology
- Biology
- Cell and Developmental Biology
- Chemistry
- Data Science
- Ecology and Evolutionary Biology**
- Environmental Studies
- Financial Mathematics and Statistics
- Food Science
- Genetics and Genomics
- Geography
- Geology and Geophysics
- History and Philosophy of Science
- Marine Science
- Mathematics
- Medicinal Chemistry
- Microbiology
- Nutrition Science
- Physics
- Plant Production
- Plant Science*
- Psychological Science
- Soil Science and Hydrology
- Statistics
- Sustainability
- Virology*
- Wildlife Conservation*

Collaborate with industry and *community partners*

Work with leading business, government and community organisations on projects that will kickstart your professional experience and get you job ready.

Usually completed in your third or fourth year, this unique learning environment mirrors the realities of the workplace by partnering you with other students from across the University to address an authentic real-world issue, with the support of an academic lead.

Working alongside and learning from experts in your chosen field, you'll develop highly sought-after skills such as professional communication, teamwork, complex problem solving and stakeholder management.

Many of our students have been offered employment opportunities as a direct result of their experience in these industry and community projects.



“I was lucky enough to be offered an internship with Randstad because of this unit. In the industry and community project units, you’ll learn how to work beyond a university setting and in a professional one. For me, personally, I discovered the career course I want to take in the future.”

Emma Peake
Bachelor of Arts

sydney.edu.au/interdisciplinary-projects



Previous projects have included:

- Closing the digital skills gap, for Adobe
- Data privacy and ethical design, for ANZ
- Reframing the museum for impact, for the Chau Chak Wing Museum
- Artificial intelligence and ethics in law and order, for IBM
- Reimagining university admissions for wider access to higher education, for the Universities Admissions Centre (UAC).

Become a *Dalyell scholar*

Our unique Dalyell Scholars stream gives high-achieving students access to a range of enrichment opportunities and exclusive units of study that will challenge you alongside your talented peers.

As a Dalyell Scholar, in addition to completing exclusive units of study as part of your degree, you'll have access to enrichment opportunities including:

- accelerated learning options, such as early access to advanced units of study
- peer, academic and professional mentoring programs
- professional skills development
- optional international experiences to develop your global perspective, with access to a global mobility scholarship (subject to availability).

If you achieve the required ATAR* and receive an offer to an eligible course, you can become a University of Sydney Dalyell Scholar. Full details are available at:

- sydney.edu.au/dalyell-scholars



“I’ve been exposed to many new perspectives. The Dalyell Scholars stream has been one of the most rewarding aspects of my time at University. It’s been great to interact with a variety of students on interdisciplinary projects, from different backgrounds and degrees.”

Ben Nguyen
Bachelor of Education (Secondary: Mathematics)** and Bachelor of Science

* The ATAR requirement for the Dalyell Scholars stream is 90+ for Aboriginal and/or Torres Strait Islander students admitted through the Gadigal Program; 95+ for students admitted through the Early Offer Year 12 (E12) Scheme, Future Leaders Scheme or Broadway Scheme; and 98+ for all other students. You can also be invited to the Dalyell Scholars Stream if you do well in your first year at uni.

**B Education (Secondary: Mathematics) has been replaced by Bachelor of Education (Secondary)

The world is *your campus*

We have one of the largest global mobility programs in Australia*, opening up a world of experiences for you. We partner with more than 250 leading universities in over 40 countries, giving you access to global opportunities that will broaden your horizons and skills.

Our global opportunities offer a new perspective to your academic experience and enable you to develop the cultural competence and confidence for a truly global career.

Develop a global perspective

Opportunities include:

- 130 partner universities that are ranked in the top 200 worldwide**
- short-term (2–6 weeks), semester-long and year-long international study options, both in-person and virtual
- overseas field schools to tackle real-world problems
- intensive in-country units that allow you to study language and culture at a partner university
- short-term summer programs at prestigious universities, including Harvard, Yale and the London School of Economics
- professional placements that give you an opportunity to work and study in cities around the world during semester breaks.

We also offer financial support for international experiences, including a range of scholarships and grants to help cover your living and travel costs while you're overseas. There are also government-funded OS-HELP loans.

And you can make the most of your time abroad with the Global Citizenship Award (GCA) – an extracurricular, internationally focused leadership development program that will help you transform your overseas experiences into tangible skills and graduate opportunities.

– sydney.edu.au/sydney-abroad

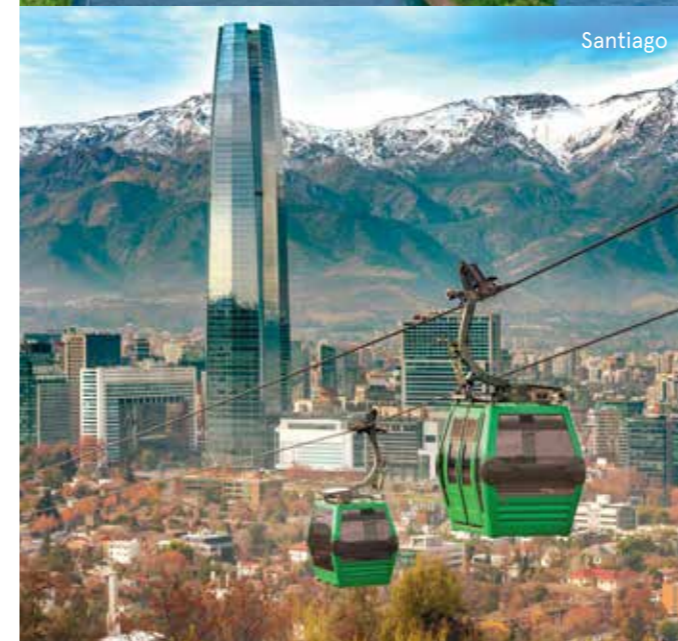


“Definitely do it! Making the decision to study overseas is one of those life-changing moments you won’t ever forget. It’s quite nerve-wracking to leave the comforts of home – but take the plunge and go be the person you know you want to be!”

Rifka Samsudeen
Bachelor of Commerce
Copenhagen Business School, Denmark



Paris



Santiago



London



Singapore



San Francisco



Tel Aviv

120

partners
in Europe

61

partners
in North
America

58

partners
in the
Asia-Pacific
region

28

partners
in the
United
Kingdom

6

partners
in Latin
and South
America

6

partners
in the
Middle East

* Australian Universities International Directors' Forum Learning Abroad Benchmarking 2019 (in 2020)
** Times Higher Education World University Rankings 2022



Open learning *environment*

Support your
career aspirations
and interests
by developing a
unique skill set.

Our Open Learning Environment is designed to help you build novel skill combinations and extend your knowledge by exploring fields of study outside your course.

It's made up of a diverse collection of units of study that are each worth zero, two or six credit points.

The zero-credit-point units are completed entirely online, at your own pace, and can be taken any time throughout the year. They are free, and don't count towards your degree.

The for-credit units combine independent online learning with workshops. Many courses allow you to count for-credit OLE units towards your degree. In many cases you can even try the zero-credit-point OLE unit first, to ensure it's the right fit for you before upgrading to the for-credit version.

Some of the OLEs offered in 2022

- Boutique Brewing
- The Science of Health and Wellbeing
- Writing for the Digital World
- Cryptocurrency Markets and Investments
- The Apocalypse in Science and Culture
- Experience Korea

sydney.edu.au/students/ole-units







Which career is *right for me?*

Our advice is to start by doing what you enjoy and what inspires you.
You can refine your study journey as you discover what you love.

We offer a wide range of courses, categorised into broad areas of interest.
Use this table to ask yourself some key questions, and then match the subjects you enjoy and your aspirations with the subjects we teach.

Specific course details and admission criteria are available at:

– sydney.edu.au/courses

 What interests me?	 How can I combine my passions with a career? I'd like to...	 What are some jobs that match my interests?	 University areas I might like to study
<ul style="list-style-type: none">– Design and technology– Geography– Industrial technology– Information processes and technology– Photography, video and digital imaging– Software design and development– Visual arts	Use my creativity to shape spaces, services and experiences.	<ul style="list-style-type: none">– Architect– Designer– Front-end developer– Interaction designer– Property developer– Project manager– Sustainability manager– Urban planner– User-experience (UX) designer	Architecture, design and planning
<ul style="list-style-type: none">– Aboriginal studies– Ancient history– Drama– Economics– English– Languages– Mathematics– Modern history– Philosophy– Society and culture– Visual arts	Apply critical thinking to analyse society and communicate new ideas.	<ul style="list-style-type: none">– Academic– Artist– Diplomat– Economist– Editor or publisher– Human Rights Specialist– Journalist– Language specialist– Multimedia producer– Political adviser– Social policy adviser	Arts and social sciences
<ul style="list-style-type: none">– Business management– Business studies– Economics– English– Legal studies– Mathematics– Society and culture	Drive change with positive economic, social and environmental impacts.	<ul style="list-style-type: none">– Accountant– Business analyst– Entrepreneur– Financial dealer and broker– Human resources specialist– Investment banker– Management consultant– Marketing/advertising executive– Project manager	Business

 What interests me?	 How can I combine my passions with a career? I'd like to...	 What are some jobs that match my interests?	 University areas I might like to study
<ul style="list-style-type: none">– Biology– Chemistry– Community and family studies– English– Languages– Mathematics– Personal development, health and physical education– Physics– Senior science	Help young minds develop and transform people's lives.	<ul style="list-style-type: none">– Careers adviser– Counsellor– Early childhood teacher– Education administration and management– Education policy advisor– Human rights advocate– International aid worker– Primary teacher– Secondary teacher– Social worker	Education and social work
<ul style="list-style-type: none">– Biology– Chemistry– Computer science– Design and technology– Engineering studies– Industrial technology– Information processes and technology– Mathematics– Physics– Software design and development	Develop innovative, creative and sustainable solutions to society's toughest challenges.	<ul style="list-style-type: none">– Aircraft/aerospace engineer– Biomedical engineer– Chemical engineer– Civil engineer– Computer programmer– Electrical engineer– Mechanical engineer– Mechatronics engineer– Project manager– Software developer– Web developer	Engineering and computer science
<ul style="list-style-type: none">– Business studies– Economics– Global politics– Legal studies– Society and culture	Dedicate myself to achieving a more just, productive and inclusive world.	Legal <ul style="list-style-type: none">– Barrister– Judge– Magistrate– Solicitor Non-legal <ul style="list-style-type: none">– Diplomat– Business/corporate leader– Human rights advocate– International relations specialist	Law
<ul style="list-style-type: none">– Biology– Chemistry– Community and family studies– Mathematics– Personal development, health and physical education– Physics	Improve people's lives by focusing on health and wellbeing – as well as work in one of the fastest growing sectors.	<ul style="list-style-type: none">– Dentist– Diagnostic radiographer– Doctor– Health manager/educator– Occupational therapist– Pharmacist– Physiotherapist– Registered nurse– Speech/language pathologist	Medicine and health
<ul style="list-style-type: none">– Drama– Film– Music	Apply myself creatively alongside some of the world's greatest talent.	<ul style="list-style-type: none">– Audio engineer– Chamber/orchestral musician– Concert soloist– Film score composer– Music journalist– Music producer– Music teacher– Sound designer	Music
<ul style="list-style-type: none">– Agriculture– Biology– Chemistry– Earth and environmental science– Geography– Mathematics– Physics– Psychology	Understand life's mysteries and tackle the world's biggest challenges.	<ul style="list-style-type: none">– Analyst/data scientist– Astronomer– Policymaker– Mathematician– Medical scientist– Nutritionist– Psychologist– Veterinarian	Science



Scholarships

More than \$135 million in scholarships available.

Chancellor's Award

The Chancellor's Award recognises domestic students who have achieved an outstanding result in their Year 12 studies. The award is worth \$10,000 per year, for the duration of an undergraduate degree (some exclusions apply). It is awarded automatically to students who achieve an ATAR of 99.90+ (or equivalent).

– sydney.edu.au/scholarships/chancellors-award

Sydney Scholars Award

The Sydney Scholars Award is awarded to Year 12 students who demonstrate the skills and attributes to thrive at university, and who achieve excellent results in the final year of their studies. It is valued at \$6,000 for the first year of an undergraduate course.

– sydney.edu.au/scholarships-ssp



“The E12 scholarship allowed me to get a better footing during my studies. I’ve made so many great connections, which has been amazing for my personal growth and development.”

Skala Hamawandy
Bachelor of Science and Master of Nursing

Early Offer Year 12 (E12) Scheme Scholarship

This scholarship is available to students who are eligible for the Early Offer Year 12 (E12) admission scheme. In addition to receiving an early conditional offer, successful E12 applicants will receive a first-year \$5,950 scholarship.

See page 30 or visit our website for more information on E12 entry.

– sydney.edu.au/e12

Other Scholarships

Our extensive range of scholarships also includes:

- equity scholarships
- scholarships for Aboriginal and Torres Strait Islander students
- global mobility scholarships
- Dalzell Scholars global mobility scholarships
- Elite Athlete Program scholarships
- accommodation scholarships
- faculty-based scholarships, and more.

More information, including eligibility and application requirements, is available at

– sydney.edu.au/scholarships



Student accommodation

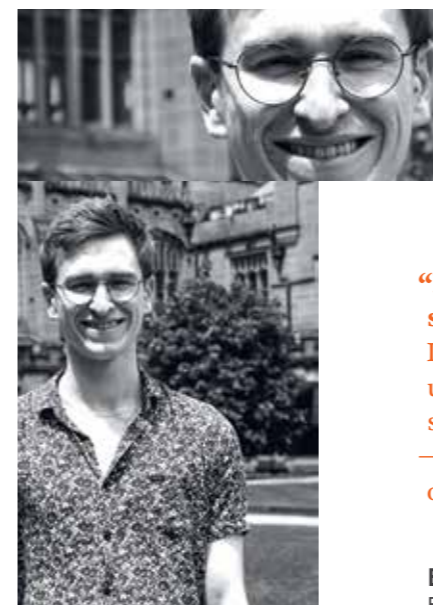
Experience uni life at your doorstep

As a student with us, you'll have a range of accommodation options to choose from, including:

- University residences
- residential colleges
- independently run student housing.

Our Accommodation Services website is a great place to get started. It's full of helpful advice on where to live, expected costs, and all your accommodation options both on and off campus. It also allows you to register for University-owned housing.

– sydney.edu.au/accommodation



“It's truly the easiest way to meet people and feel supported and safe as you transition to uni life. I absolutely recommend spending your first year at university in on-campus accommodation! There are so many ways to get involved in and outside the halls – through events such as Intramural Arts and Sport, or Welcome Week activities like the harbour cruise.”

Ethan Christ
Bachelor of Science and Bachelor of Advanced Studies



University *life*

University is so much more than just what happens in the classroom – so make the most of it!

Expand your uni experience with our 250+ student-run clubs and societies, 30+ cafes, bars and food outlets, live performance spaces, museums and art galleries, 24-hour libraries, Olympic-size swimming pool, fully equipped gym and sports facilities, climbing wall and heritage-listed graffiti tunnel – to name just a few of the things that make up life at Sydney!

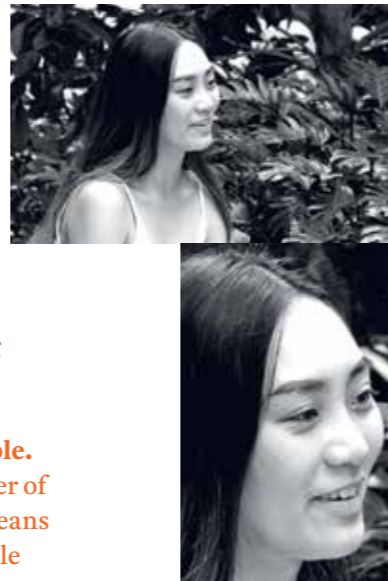
@sydney_uni

#USYDlife

sydney.edu.au/student-life

“I’ve formed lifelong friendships with the most kind-hearted and welcoming people. The enormous number of clubs and societies means you’ll definitely be able to find something that best suits your personal interests or hobbies!”

Olivia Le Khac
Bachelor of Science and
Doctor of Dental Medicine



Student *support* services

When you join us at the University of Sydney, you’ll have plenty of help. Here are just a few of the ways we support your health, wellbeing and academic achievement.



Orientation and arrival

- Welcome to university
- Settling into Sydney
- Adjusting to student life
- Opportunities to meet fellow students and staff
- Information about available support services



Aboriginal and Torres Strait Islander students

- Academic enrichment and orientation program
- Tutorial assistance
- Peer mentoring
- Cultural support and safe spaces
- Rent subsidy



Disability

- Assistive technologies
- Alternative formatting
- Lecture support
- Accessible buildings and facilities
- Academic adjustments



Accommodation

- On-campus student housing
- Residential colleges
- Off-campus living
- Supportive communities



Language and learning

- Intensive preparation programs
- English language programs
- One-to-one coaching
- Online learning resources



Academic enrichment

- Bridging courses
- Academic workshops
- Mathematics learning support
- One-to-one consultations
- Online learning resources



Careers

- Career advice and development
- Employability skills workshops
- Careers fairs and events where you can meet employers
- Sydney CareerHub online jobs database



Financial wellbeing

- Bursaries and interest-free loans
- Help with essential living costs and study-related expenses



Health and physical wellbeing

- Doctors
- Dentists
- Optometrists
- Physiotherapists
- Pharmacists
- Childcare information



Mental health

- Clinical psychologists and counsellors
- Mental health support services
- Workshops for success
- Resilience training



Faith

- On-campus multifaith chaplaincy, with chaplains from 12 faith groups available for consultations
- Dedicated prayer rooms

More information about our student support services is available at:
sydney.edu.au/student-life

“There can be a lot of pressure and expectations other people have for you when graduating high school. My advice would be to try and work out the things you love, the path you wish to take, and to focus on your personal achievements and goals.”

Kawana Crowe
Bachelor of Science and Bachelor of Advanced Studies (Advanced)



How to *apply*

2023



Uni terminology 101

Excited about going to uni but don't know what to expect? We've got you covered. Here are some of the key terms you'll find throughout this guide.

Bachelor's degree

When you start university after high school, you'll apply for a bachelor's degree – such as a Bachelor of Arts or a Bachelor of Science – in your chosen subject area. A bachelor's degree is an undergraduate degree (see next page), and takes at least three years to complete.

Credit points

Each unit of study (see next page) is worth a certain number of credit points. Each course requires the completion of a particular number of credit points made up of specified units of study.

Faculty

A faculty is a part of the University that offers a particular subject area for teaching and research, such as the Faculty of Engineering, or the Faculty of Arts and Social Sciences. Each faculty is further organised into more specific parts, such as schools, departments or disciplines.

Major

A major is a particular sequence of units of study (see next page) designed to develop your expertise in a particular field of study. For example, within your bachelor's degree, you might choose to complete a major in criminology, marketing or microbiology. A major is usually made up of eight units of study.

Minor

Similar to a major, a minor is a particular sequence of units of study designed to develop your expertise in a particular field of study. A minor is usually made up of six units of study. A full list of all the available majors and minors for each course is provided on our website at:

– sydney.edu.au/courses

Part-time or full-time study


Each unit of study requires a certain number of contact hours, so you will be considered a part-time or a full-time student depending on how many units of study you take each semester. Not all courses are available part time.

Undergraduate and Postgraduate

An undergraduate degree, also known as a bachelor's degree, is the first study you'll undertake at uni. These courses don't require previous university study to apply. A postgraduate degree usually requires previous completion of a relevant undergraduate degree or diploma. Types of postgraduate degrees include graduate certificate, graduate diploma, master's degree or doctorate.

Unit of study

Each individual subject you take each semester is referred to as a 'unit of study', or just a 'unit'. Each unit of study requires a certain number of contact hours, and has assessments and/or exams. A full glossary of terms is available on – sydney.edu.au/students/glossary

Prerequisites	 Assumed knowledge
Some of our courses have prerequisites. These are subjects that you need to have completed usually at high school to a specified standard, in order to be eligible for admission to that course. E.g. a mathematics prerequisite applies to many of our courses. You will not be able to receive an offer of admission if you have not met the course prerequisites. Additionally, there are prerequisites at subject (or unit of study) level that need to be met in order to enrol in a particular unit of study.	For some courses, we expect you to already have a certain level of knowledge in a particular subject area through your high school studies, in order to successfully study that subject at university level. Unlike a prerequisite, not having the required assumed knowledge will not prevent you from receiving an offer of admission if you meet all other admission criteria, but you might struggle with the course content if you do not already have the assumed knowledge. In some cases, by meeting the course prerequisite, you may also meet the assumed knowledge for the course.

Our course prerequisites and assumed knowledge are listed under the relevant course at: sydney.edu.au/courses

Advice on how to choose the right high school subjects for the university course you'd like to apply for are available at: sydney.edu.au/hsc-subject-selection

Detailed information about our mathematics prerequisites is available at: sydney.edu.au/study/maths

Important *dates*

2023 ENTRY

April 2022	UAC applications open
	Start exploring scholarships, admission pathways and accommodation. Application closing dates vary, so do your research early and make a note of important deadlines!
	Start researching your preferred courses, and remember to check for any additional selection criteria like prerequisites or auditions
August 2022	Join us for Open Day on Saturday 27 August sydney.edu.au/open-day
September 2022	Submit your UAC application before the end of September to get the early-bird discount
	Sydney Scholars Award applications close
	E12 applications close
November 2022	E12 conditional offers made
	Sydney Scholars Award conditional offers made
December 2022	HSC results and ATARs released
	Join us for Info Day infoday.sydney.edu.au
	Most Year 12 offers are made in December Round 2; check the UAC website for important dates at: uac.edu.au/key-dates
January – February 2023	More UAC offers made
	Welcome Week – get to know your fellow students and staff the week before classes begin
	Semester 1 begins!

How to *apply*

FOR DOMESTIC STUDENTS*



Applying as an international student?

Depending on the high school qualification you're completing, some international students may be eligible to lodge their application through the Universities Admissions Centre (UAC). Detailed information for international students is available at: sydney.edu.au/international

1

CHOOSE YOUR COURSE

Are you aiming for a specific career? Or do you need more time to explore your options and get experience first? At the University of Sydney we offer a range of courses which give you

the opportunity to pick one or two degrees that suit your unique career goals and passions. Explore your options at:

– sydney.edu.au/courses

If you'd like more information, including advice on how to choose your course, then join us for an on-campus or online event. They're listed here:

– sydney.edu.au/ug-events

2

CHECK ADMISSION CRITERIA FOR YOUR COURSE

Admission to the University of Sydney is competitive. For high school students, admission is usually based on your ATAR or equivalent in a recognised high school qualification such as the HSC. However, the University accepts a range of recognised qualifications for admission into undergraduate courses. For more details visit:

– sydney.edu.au/study/recognised-qualifications

It is also important to check if there is any additional admission criteria you'll need to meet for courses you are interested in. For example, an interview, audition or portfolio. Some courses may have a mathematics prerequisite, and many of our education degrees have a prerequisite set by the NSW Education Standards Authority (NESA). You can find this information on the course tables on pages 39–71. Full details of the admission process is available at:

– sydney.edu.au/ug-entry

A range of courses in areas such as education, health, medicine and veterinary medicine, also have inherent requirements that you need to consider in making your course selection. Whilst they are not an admission requirement, you need to be able to meet these requirements to successfully complete your course.

For more information, visit:

– sydney.edu.au/students/inherent-requirements

3

SUBMIT YOUR APPLICATION TO UAC

Applications are submitted online, along with any required supporting documentation, through the Universities Admissions Centre (UAC) website. For Sciences Po Dual Degrees, apply directly to the

University. You can select up to 5 preferences per offer round, so if studying a degree with us is your dream, make sure to put us as your highest preference!

Don't forget to also apply for entry schemes (pages 30–31), scholarships (page 18), and accommodation (page 19).

– uac.edu.au

4

ACCEPT YOUR OFFER

Offers are made through UAC. If you receive an offer, you'll also get an email from the University of Sydney within 24 hours outlining the details of your offer and how to accept it.

Most offers to Year 12 students are made in December Round 2, with further offers made in January and February, subject to availability of places.

You can accept multiple offers before choosing which degree to enrol in, so remember to take advantage of later offer rounds.

*You are a domestic student if you are an Australian or New Zealand citizen (including dual citizens), or an Australian permanent resident, or permanent humanitarian visa holder.



Aboriginal *and* Torres Strait Islander *students*

Discover our range of programs dedicated to supporting Indigenous students to study at the University of Sydney.

Scholarships

We offer a wide range of scholarships. Search from hundreds of offerings for Indigenous students:

- sydney.edu.au/scholarships-search

Aboriginal and Torres Strait Islander Entry Scholarship

Valued at \$10,000, this scholarship supports academically gifted Australian Indigenous students, who have obtained an ATAR in the HSC (or equivalent) of 85 or above.

Gadigal Accommodation Scholarship

This scholarship subsidises rent during your first year at available University-owned student accommodation. It is open to school leavers who are commencing full-time undergraduate study. Places are limited and priority is given to regional and remote students.

Gadigal Program

We look at more than your ATAR. Through our Gadigal Program admissions pathway, you will have access to:

- lower minimum ATAR requirements
- the opportunity to apply for a Gadigal Early Conditional Offer
- participation in an intensive two-week Academic Skills Program
- gadigal.sydney.edu.au

Extended Bachelor's Programs

A dedicated pathway for Aboriginal and Torres Strait Islander students with built-in cultural support.

These extended degrees include an additional foundation year, with culturally relevant literacy and mathematics studies. These studies will equip you with excellent communication, critical and analytical skills, that will prepare you for university studies and beyond.

The available courses are:

- Bachelor of Arts (Extended)
- Bachelor of Liberal Arts and Science (Extended)
- Bachelor of Science (Extended)
- Bachelor of Science (Health) (Extended).

These courses are open to eligible students who can demonstrate potential for tertiary study to a standard sufficient to undertake the course, as defined in the course admission criteria.



“I take pride in the fact that I am studying at the University of Sydney. The team was in contact with me through the entire enrolment process and I’ve met many supportive friends through the Gadigal program.”

Thomas Harrington

Gadigal Program participant
Bachelor of Science and Doctor of Medicine

The Gadigal Centre

Our dedicated student centre that supports Aboriginal and Torres Strait Islander students.

We are deeply committed to supporting our Aboriginal and Torres Strait Islander students with their academic, cultural, economic, and social and emotional needs to ensure that your student experience is positive and impactful.

The Gadigal Centre aspires to provide a culturally safe space which embodies high professionalism, integrity and understanding and seeks to uphold these values in all aspects of its service delivery to the University of Sydney’s Aboriginal and Torres Strait Islander students and their development.

We want to empower you throughout your studies and careers. Think of us as your family at the University – we will work with you to make sure that your journey here is as fun and successful as possible.

Our aim is to help you achieve your full potential and graduate from the University, job-ready.

Through the Gadigal Centre you’ll have access to:

- Mentoring Our Brothers and Sisters (MOBS) Program delivered by senior Indigenous students
- Free tutoring and group sessions through our Indigenous Tutorial Assistance Scheme
- Culturally safe spaces for Indigenous students
- You’ll also have access to the broader range of student support services such as careers support, disability services, financial support and academic support and enrichment programs.
- sydney.edu.au/indigenous-support

Accommodation

Living on campus is a great way to meet people, build friendships and develop networks that will stay with you for life. You’ll join a supportive community and be immersed in the full university experience from day one.

There are plenty of accommodation options to choose from, including:

- University-owned (independent living, self-catered)
- University colleges (fully inclusive of meals and programs)
- Off-campus accommodation.

Adjustment factors, entry schemes *and* other admission pathways

We also offer targeted entry schemes and other admission pathways that can help you reach your dream degree.



ENTRY SCHEMES

Academic Excellence Scheme

The Academic Excellence Scheme recognises high performance in advanced levels of English and mathematics by applying adjustment factors to boost your selection rank for eligible courses. If you are a domestic student completing an Australian Year 12 qualification or the IB, you may be eligible for an adjustment of up to 5 points added to your ATAR or equivalent IB score*, depending on the course you apply for and whether you have achieved a Band 5 or 6 (or equivalent) in high-level English or mathematics.

– sydney.edu.au/study/aes

Early Offer Year 12 (E12) Scheme

The E12 Scheme, offered via UAC's Schools Recommendation Schemes (SRS), is for domestic high school students in NSW who have been assessed by UAC's Educational Access Scheme as:

- attending a NSW rural or regional high school or,
- experiencing E12 eligible financial hardship or,
- residing in an area identified by the Australian Bureau of Statistics as being in the lowest 25 percent of socioeconomic disadvantage in Australia.

Successful E12 applicants have the opportunity to receive an early conditional offer to eligible courses with a lower minimum ATAR requirement, and a \$5950 scholarship in their first year.

– sydney.edu.au/e12

Broadway Scheme

The Broadway Scheme is our Educational Access Scheme (EAS) for domestic high school students who have experienced significant educational disadvantage during Year 11 and/or Year 12. You may be eligible for up to 10 adjustment factors depending on the course you apply for, and the severity of your educational disadvantage.

– sydney.edu.au/admission-pathways

Future Leaders Scheme

The Future Leaders Scheme is for Year 12 school captains and dux students who have recently completed high school in Australia and who apply through UAC. The scheme offers admission to eligible courses with a lower ATAR requirement in recognition of leadership and academic achievements.

– sydney.edu.au/study/future-leaders-scheme

Elite Athletes and Performers Scheme

The Elite Athletes and Performers Scheme recognises domestic students who are elite athletes or performers and whose training, rehearsal and/or competitive commitments have significantly affected their Year 12 studies. You may be eligible to receive adjustment factors to increase your selection rank when applying to eligible degrees at the University.

– sydney.edu.au/study/admission-pathways

Creative Arts Special Admission Scheme

The Creative Arts Special Admission Scheme allows domestic high school students who apply through UAC to be eligible for an early offer of admission prior to the release of ATARs (or equivalent). Eligible applicants are assessed on a combination of academic performance and audition/portfolio requirements.

– sydney.edu.au/arts/creative-arts-portfolio
– sydney.edu.au/music/casas

Portfolio Admissions Pathway

The Portfolio Admissions Pathway is a potential entry pathway for students who wish to apply for an architecture or design course and who expect to receive an ATAR of up to five points lower than the required ATAR for their chosen course. In conjunction with the HSC and other formal assessment systems, it assists us in identifying students with the potential to excel in architecture or design computing.

– sydney.edu.au/architecture/portfolio-entry

*ATAR Adjustment Factors are added to a student's ATAR equivalent rank, and not their IB score.

OTHER ADMISSION PATHWAYS

Transferring

If you do not get into your preferred course, or if your interests have changed, you may be eligible to reapply for your preferred course after completing one year of full-time study in another bachelor's degree. Transferring requirements vary between faculties, and you may need to achieve certain grades to be eligible.

– sydney.edu.au/study/transfer-course

Mature-age entry

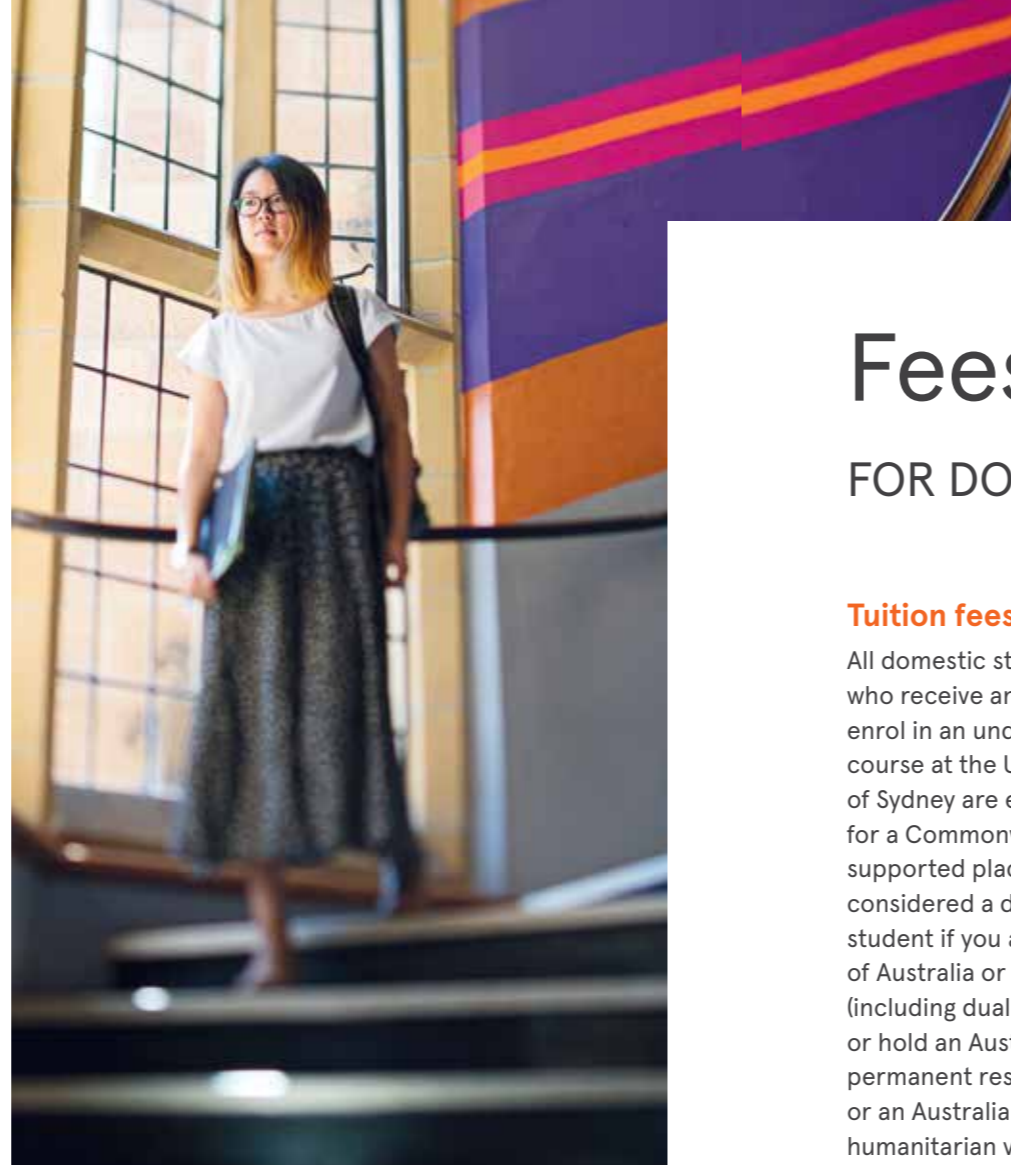
Our Mature-age Entry Scheme is an entry pathway for eligible domestic applicants aged 21 years or older who do not hold high school results that meet entry requirements and who have not previously completed any study at a tertiary institution.

– sydney.edu.au/admission-pathways

Special Consideration for Admission Scheme

If you have already started some tertiary study but have experienced disruptions to your secondary or tertiary studies due to circumstances beyond your control, you may be eligible to apply for entry through our Special Consideration for Admission Scheme.

– sydney.edu.au/admission-pathways



Fees *and* costs FOR DOMESTIC STUDENTS

Tuition fees

All domestic students who receive an offer to enrol in an undergraduate course at the University of Sydney are eligible for a Commonwealth-supported place. You are considered a domestic student if you are a citizen of Australia or New Zealand (including dual citizens), or hold an Australian permanent resident visa, or an Australian permanent humanitarian visa.

When you are offered a Commonwealth-supported place in one of our courses, your tuition fees will be subsidised by the Australian Government. You will pay the remainder, called a 'Student Contribution Amount'.

Student Contribution Amounts are defined by the University, within limits set by the Australian Government each year. Check the tuition fees for your specific course at:

– sydney.edu.au/courses

Exact Student Contribution Amounts for your course will depend on your calendar year of study and the specific units of study in which you enrol. Costs can vary depending on the discipline of study, and study load of each unit. Not all units of study in a course are in the same student contribution band.

Student Contribution Amounts are confirmed each year, at the census date. Depending on your citizenship or residency status, you will be able to either pay up-front with a 10 percent discount, if eligible, or take out a HECS-HELP loan from the Australian Government.

Student Contribution Amounts are reviewed annually by the University and will increase based on the Australian Government specified caps. More information about the Australian Government's role in financing your university studies is available at:

– studyassist.gov.au

More information about our tuition fees and other costs is available at:

– sydney.edu.au/study/tuition-fees

HECS-HELP loans

Australian citizens, Australian permanent humanitarian visa holders and New Zealand Special Category Visa holders who meet the long-term residency requirements can either pay their Student Contribution Amount up-front with a 10 percent discount or obtain a full or partial HECS-HELP loan.

If you obtain a HECS-HELP loan, you will have to start repaying it when your income exceeds a certain amount. More information, including eligibility requirements, is available at:

– studyassist.gov.au

Australian permanent resident visa holders (excluding Australian permanent humanitarian visa holders) and most New Zealand citizens are required to pay their Student Contribution Amount up-front, and are not eligible for the 10 percent discount or for a HECS-HELP loan.

Other costs

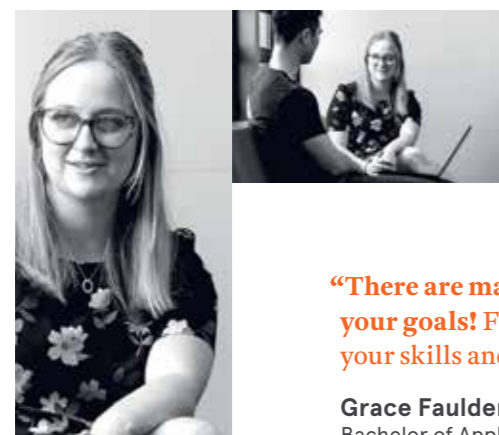
In addition to tuition fees, you should budget for:

- course materials, textbooks, tools, protective clothing and other equipment
sydney.edu.au/additional-course-costs
- the Student Services and Amenities Fee (SSAF), which is an Australian Government initiative, designed to fund non-academic university services and support programs; it is payable each semester and indexed annually for the duration of your course. In 2022 the SSAF is \$157.50 for full-time students and \$118.12 for part-time students.
sydney.edu.au/ssa-fee
- living expenses such as rent, travel and food if living away from home
sydney.edu.au/study/living-costs

Graduate entry

Our graduate entry courses allow you to gain a professional qualification in a competitive area such as law, medicine, dentistry, physiotherapy or veterinary medicine, after completing an eligible undergraduate degree. Graduate entry options are available on our courses website.

– sydney.edu.au/courses



“There are many pathways available, and there is no one right way to achieve your goals! Follow your passion and put yourself out there. Don't discount your skills and abilities – apply for the course you really want to study.”

Grace Faulder
Bachelor of Applied Science

“I decided on my degree by finding the overlap between what I love, what I’m good at and what the world needs.”

Daniel Kim
Bachelor of Commerce and
Bachelor of Advanced Studies

University study isn’t just about gaining credentials – it’s about investing your time to discover what you really love doing.

Start by thinking about which subjects interest you, as well as how you like to learn and what you want from your university experience.

Areas of study

2023



2023 Admissions Guide

FOR DOMESTIC STUDENTS

We offer Guaranteed Entry for most courses and list a guaranteed selection rank – ATAR + adjustment factors. Guaranteed Entry to a course is subject to meeting all the admission criteria and the availability of places. Selection ranks listed with an asterisk (*) are indicative and are not Guaranteed Entry ranks. These courses have additional admission criteria and/or limited places.

Course name	Selection Rank	Duration in years
Architecture, design and planning Page 38		
■ B Architecture and Environments	85	3
■ B Design (Interaction Design)	80	3
■ B Design/B Advanced Studies (Interaction Design)	80	4
■ B Design in Architecture	95	3
● B Design in Architecture (Honours)/ M Architecture	97	5
Arts and social sciences Page 40		
◆ B Arts	80	3
◆ B Arts/B Advanced Studies	80	4
◆ B Arts/B Advanced Studies (Dalyell Scholars)	98	4
◆ B Arts/B Advanced Studies (International and Global Studies)	90	4
◆ B Arts/B Advanced Studies (Languages)	90	4
◆ B Arts/B Advanced Studies (Media and Communications)	95	4
◆ B Arts/B Advanced Studies (Politics and International Relations)	92	4
◆ B Arts (Sciences Po Dual Degree) ▲	80*	2+2
■ B Visual Arts ▲	70*	3
■ B Visual Arts/B Advanced Studies ▲	70*	4
◆ Diploma of Arts	na	1

You can identify courses by the degree type: ● Professional degree ■ Specialist degree ◆ Liberal studies degree
▲ Admission is based on a combination of selection rank, or equivalent, plus additional admission criteria. Visit [sydney.edu.au/courses](#)
‡ This course has a mathematics course prerequisite.

All published scores are correct at the time of printing, and are subject to change. The most up-to-date information on ATARs is available at:

– [sydney.edu.au/courses](#)

Course name	Selection Rank	Duration in years
◆ Diploma of Language Studies	na	1
◆ Diploma of Social Sciences	na	1
Business Page 44		
◆ B Commerce ‡	96	3
◆ B Commerce/B Advanced Studies ‡	96	4
◆ B Commerce/B Advanced Studies (Dalyell Scholars) ‡	98	4
Economics Page 46		
■ B Economics ‡	91	3
■ B Economics/B Advanced Studies ‡	91	4
■ B Economics (Sciences Po Dual Degree) ‡ ▲	91*	2+2
Education and social work Page 48		
● B Education (Early Childhood)	77	4
● B Education (Health and Physical Education) ^ ▲	80	4
● B Education (Primary) ^ ▲	85	4
● B Education (Secondary) ▲	80	4
● B Education/B Advanced Studies (Secondary) ▲	80	5
● B Social Work	80	4
◆● B Arts/B Social Work	80	5

Discover our entry schemes on pages 30–31 to see if you're eligible for adjustment factors or a lower ATAR.

Course name	Selection Rank	Duration in years
Engineering and computer science Page 52		
● B Advanced Computing ‡	90	4
◆● B Advanced Computing/B Commerce ‡	96	5
◆● B Advanced Computing/B Science ‡	90	5
◆● B Advanced Computing/B Science (Health) ‡	90	5
◆● B Advanced Computing/B Science (Medical Science) ‡	90	5
● B Engineering Honours (Dalyell Scholars) ‡	98	4
● B Engineering Honours (Aeronautical) ‡	90	4
● B Engineering Honours (Biomedical) ‡	90	4
● B Engineering Honours (Chemical and Biomolecular) ‡	90	4
● B Engineering Honours (Civil) ‡	90	4
● B Engineering Honours (Electrical) ‡	90	4
● B Engineering Honours (Flexible First Year) ‡	90	4
● B Engineering Honours (Mechanical) ‡	90	4
● B Engineering Honours (Mechatronic) ‡	90	4
● B Engineering Honours (Software) ‡	90	4
● B Engineering Honours with Space Engineering ‡	99	4
◆● B Engineering Honours/B Arts ‡	90	5.5
◆● B Engineering Honours/B Commerce ‡	96	5.5
●■ B Engineering Honours (Civil)/B Design in Architecture ‡	95	5
● B Engineering Honours/B Project Management ‡	90	5
◆● B Engineering Honours/B Science ‡	90	5
◆● B Engineering Honours (Biomedical)/ B Science (Health) ‡	90	5
◆● B Engineering Honours (Biomedical)/ B Science (Medical Science) ‡	90	5
● B Project Management ‡	86	3
Law Page 58		
◆● B Arts/B Laws	99.5	5
◆● B Commerce/B Laws ‡	99.5	5
■● B Economics/B Laws ‡	99.5	5
● B Engineering Honours/B Laws ‡	99.5	6.5
◆● B Science/B Laws ‡	99.5	5
Medicine and health Page 60		
● B Applied Science (Diagnostic Radiography)	96*	4
● B Applied Science (Exercise and Sport Science)	82*	3
● B Applied Science/B Advanced Studies (Exercise and Sport Science)	82*	4
● B Applied Science (Exercise Physiology)	91*	4
● B Applied Science (Occupational Therapy)	93*	4

B = Bachelor of, M = Master of, D = Doctor of
* Selection ranks with an asterisk are indicative and not Guaranteed Entry.
‡, ^, na, see 'Table notes' on page 72.

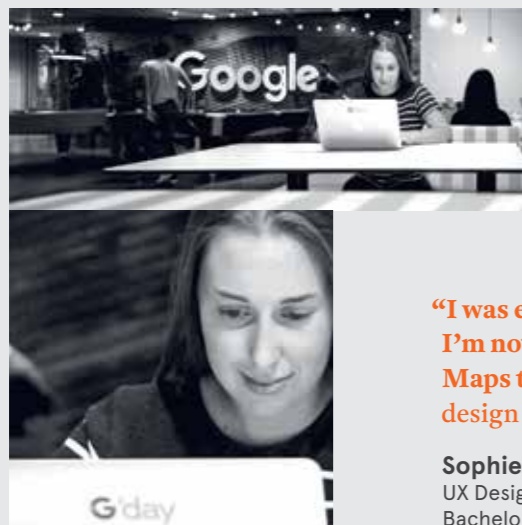
Course name	Selection Rank	Duration in years
● B Applied Science (Physiotherapy)	99.5*	4
● B Applied Science (Speech Pathology)	94*	4
◆● B Arts/D Medicine ‡ ▲	99.95*	7
◆● B Arts/M Nursing	80	4
● B Nursing (Advanced Studies)	84	3
● B Oral Health	83*	3
● B Pharmacy (Honours)/M Pharmacy Practice ‡	90	5
● B Pharmacy and Management (Honours)/ M Pharmacy Practice ‡	90	6
◆● B Science/D Dental Medicine ‡ ▲	99.6*	7
◆● B Science/D Medicine ‡ ▲	99.95*	7
◆● B Science/M Nursing ‡	80	4
◆● B Science (Health)/M Nursing ‡	80	4
◆● B Science/M Nutrition and Dietetics ‡	97.5*	5
Music Page 66		
■ B Music ▲	70*	4
■ B Music (Composition) ▲	70*	4
■ B Music/B Advanced Studies (Composition) ▲	70*	5
● B Music (Music Education) ^ ▲	70*	4
■ B Music (Performance) ▲	70*	4
■ B Music/B Advanced Studies (Performance) ▲	70*	5
Science Page 68		
◆ B Liberal Arts and Science	70	3
● B Psychology ‡	85	3
● B Psychology Honours ‡	96	4
◆ B Science ‡	80	3
◆ B Science (Health) ‡	80	3
◆ B Science (Medical Science) ‡	90	3
◆ B Science/B Advanced Studies ‡	80	4
◆ B Science/B Advanced Studies (Dalyell Scholars including Mathematical Sciences) ‡	98	4
◆ B Science/B Advanced Studies (Advanced) ‡	95	4
◆ B Science/B Advanced Studies (Agriculture) ‡	75	4
◆ B Science/B Advanced Studies (Animal and Veterinary Bioscience) ‡	80	4
◆ B Science/B Advanced Studies (Food and Agribusiness) ‡	80	4
◆ B Science/B Advanced Studies (Health) ‡	80	4
◆ B Science/B Advanced Studies (Medical Science) ‡	90	4
◆ B Science/B Advanced Studies (Taronga Wildlife Conservation) ‡	85	4
◆ B Science/M Mathematical Sciences ‡	98	4.5
● B Veterinary Biology/D Veterinary Medicine ‡ ▲	98*	6

Architecture, Design and Planning

Design the future. When you study at Sydney, you'll combine creative flair with finely tuned technical skills to shape the spaces, services and experiences – both physical and digital – in which we live, work and play.

Combining creativity and technology

By studying with us, you'll develop big-picture thinking and work towards addressing global challenges. You'll graduate ready for a career that's creatively driven and technically challenging.



“I was encouraged to apply for an internship at Google and I’m now a user experience designer in the Android Google Maps team. We work with researchers and engineers to design new products and features. It’s heaps of fun.”

Sophie Gardner
UX Designer
Bachelor of Design Computing (Honours)**

1st in Australia for Architecture/Built Environment*



The Wilkinson Building has one of the best-equipped design, modelling and fabrication labs in Australia and provides dedicated studio space for students

1st Our Bachelor of Design is one of the first courses of its kind in the world, combining creativity and coding

* QS World University Rankings by Subject 2021

**B Design Computing has been replaced by B Design (Interaction Design)

Architecture, design and planning courses

B Architecture and Environments

Selection Rank: 85 Guaranteed
Entry: Feb
Duration (full time): 3 years
Assumed knowledge: English Advanced and Mathematics Advanced or higher

Programs, majors and minors

Core areas of study include architectural and environmental design, architectural history and theory, architectural sciences and technologies, property and sustainability, urban design and planning. The University of Sydney School of Architecture, Design and Planning electives may include acoustics, lighting, structures and design computing.

Career possibilities

Architect (with additional study), property and real estate, construction, project manager, urban designer, urban planner.

B Design (Interaction Design) B Design/B Advanced studies (Interaction Design)

Selection Rank: 80 Guaranteed
Entry: Feb/Jul
Duration (full time): 3 years (single)/4 years (combined)
Dalyell by invitation
Assumed knowledge: Mathematics Advanced or higher

Programs, majors and minors

Core areas of study include app design, creative technology, design thinking, graphic design, information architecture, physical computing, sound design, user experience (UX) and user-centred design. The four design studios focus on user experience design, interaction design, information visualisation, and interactive product design. Related units may be taken from arts and social sciences, business, engineering, computer science, music and visual arts. In the combined Design (Interaction Design)/B Advanced Studies, you will also take a major from the shared pool.

In the final year of the combined degree you will undertake advanced coursework and a substantial real-world industry, community, entrepreneurship or research project, or an honours project.

Career possibilities

Interaction designer, UX designer, creative director, business development, marketing consultant, communications adviser, project manager, design manager, web and multimedia designer, multimedia strategist, creative technologist.

B Design in Architecture

Selection Rank: 95 Guaranteed
Entry: Feb
Duration (full time): 3 years
Assumed knowledge: English Advanced and Mathematics Advanced or higher

Programs, majors and minors

Core areas of study include architectural design, architectural history and theory, architectural technologies, architecture workshops, environment and sustainability, professional practice and architectural communications. You can take electives from the University of Sydney School of Architecture, Design and Planning, as well as from other faculties and schools.

Career possibilities

Architect (with additional study), architectural technologist, interior and spatial designer, urban designer, project manager, property developer.

Combine this degree with
B Engineering Honours (Civil).

B Design in Architecture (Honours)/M Architecture

Selection Rank: 97 Guaranteed
Entry: Feb
Duration (full time): 5 years
Assumed knowledge: English Advanced and Mathematics Advanced or higher

Programs, majors and minors

Core areas of study include architectural design, history and theory, technologies, architecture workshops, environment and sustainability, professional practice and architectural communications. You can take electives from the University of Sydney School of Architecture, Design and Planning, as well as from other faculties and schools.

Career possibilities

Architect, design manager, academic.



Dalyell Scholars
see page 11

Assumed knowledge and prerequisites
see page 25

† Mathematics prerequisite
see page 72

For important information
see page 72

Arts and Social Sciences



We'll teach you to think through problems effectively and find solutions. Study with us and you'll develop the skills to rigorously assess assumptions, develop strategies and test ideas against evidence. In the classroom, on an industry placement or on overseas exchange, you'll bring your intellectual curiosity to bear on some of the most complex issues of the 21st century.

Real-world experience before graduation

Take up an Industry and Community Project Unit during your course and test your problem-solving skills alongside professionals. Under the direction of our industry partners, you'll work with other students to form solutions to real-world issues – like the future of health care, the war on waste, or tech and mental health – and gain valuable career experience before you graduate.

45⁺ Learn from leading experts across more than 45 subject areas

1st The University of Sydney is ranked #1 in Australia and #4 in the world for graduate employability*

* QS Graduate Employability Rankings 2022



“Studying philosophy gave me the tools and mindset to build and manage a business effectively. I don't think I'd have the competence or wisdom to do what I'm doing now without my learning experience at the University of Sydney.”

Adam Jacobs
Co-founder and Managing Director, THE ICONIC
Bachelor of Arts and Bachelor of Commerce

Arts and social sciences courses

B Arts B Arts/B Advanced Studies

Selection Rank: 80 Guaranteed
Entry: Feb/Jul
Duration (full time): 3 years (single)/4 years (combined)
Dalyell by invitation
Assumed knowledge: Depends on majors or units of study chosen.

Programs, majors and minors
In the B Arts, you will choose one major from the options below and a minor or second major from these options or from the shared pool. In the B Arts/B Advanced Studies, you will choose one major from the list below, and a second major from the shared pool or from the following: American Studies; Ancient Greek; Ancient History; Anthropology; Arabic Language and Cultures; Archaeology; Art History; Asian Studies; Biblical Studies and Classical Hebrew; Chinese Studies; Criminology; Cultural Studies; Digital Cultures; Diversity Studies

(minor only); Econometrics; Economics; Economic Policy; Education Studies; English; Environmental, Agricultural and Resource Economics; European Studies; Film Studies; Financial Economics; French and Francophone Studies; Gender Studies; Germanic Studies; Hebrew (Modern); History; Indigenous Studies; Indonesian Studies; International Comparative Literary Studies; International Relations; Italian Studies; Japanese Studies; Jewish Civilisation, Thought and Culture; Korean Studies; Latin; Linguistics; Modern Greek Studies; Music; Philosophy; Political Economy; Politics; Sanskrit (minor only); Social Policy (minor only); Socio-legal Studies; Sociology; Spanish and Latin American Studies; Studies in Religion; Theatre and Performance Studies; Visual Arts; Writing Studies (minor only). In the final year of the combined degree you will undertake advanced coursework and a substantial real-world industry, community, entrepreneurship or research project, or an honours project.

Career possibilities
Anthropologist, archaeologist, archivist, art historian, business administrator or manager, historian, heritage specialist, foreign affairs and trade officer, government policy officer, information specialist, journalist, museum or gallery curator, language specialist, media and communications officer, editor or publisher, researcher, sociologist. This degree equips you with the breadth and depth of knowledge and the critical and analytical skills to pursue an extensive range of established and emerging careers. It prepares you for the jobs of the future.

Combine B Arts with
B Engineering Honours, B Laws, B Social Work, D Medicine, M Nursing.

B Arts/B Advanced Studies (Dalyell Scholars)

Selection Rank: 98 Guaranteed
Entry: Feb/Jul
Duration (full time): 4 years
Dalyell by application
Assumed knowledge: Depends on majors or units of study chosen.

Programs, majors and minors
Refer to B Arts/B Advanced Studies for degree requirements. As a Dalyell Scholar, you will undertake 12 credit points of distinctive Dalyell units complemented by a suite of additional enrichment opportunities including mentoring, professional skill development, co-curricular activities, and the option for a global mobility experience. You'll also complete units from the Open Learning Environment.

Career possibilities
Anthropologist, archaeologist, business administrator or manager, economist, editor or publisher, foreign affairs and trade officer, government policy officer, historian, language specialist, journalist, museum or gallery curator, public relations manager. This degree equips you with the breadth and depth of knowledge and the critical and analytical skills to pursue an extensive range of established and emerging careers. It prepares you for the jobs of the future.

B Arts/B Advanced Studies (International and Global Studies)

Selection Rank: 90 Guaranteed
Entry: Feb/Jul
Duration (full time): 4 years
Dalyell by invitation
Assumed knowledge: Refer to B Arts/B Advanced Studies

Programs, majors and minors
This stream requires completion of a program in international and global studies which includes a major in Global Studies, a minor in a language from the School of Languages and Cultures, and a minimum of 12 credit points of study abroad/exchange. A second major, which may be an extension of the language minor, must be taken from those available in the B Arts or from the shared pool. You'll also have access to the Open Learning Environment. In the final year of the combined degree, you

will undertake advanced coursework and a substantial real-world industry, community, entrepreneurship or research project, or an honours project.

Career possibilities
Community development program manager, diplomat, foreign aid worker, foreign correspondent, human rights advocate, international business consultant, policy adviser, trade negotiator.

B Arts/B Advanced Studies (Languages)

Selection Rank: 90 Guaranteed
Entry: Feb/Jul
Duration (full time): 4 years
Dalyell by invitation
Assumed knowledge: Refer to B Arts/B Advanced Studies

Programs, majors and minors
This stream requires completion of a program in Languages. You will complete two language majors as well as translation-focused units, and have the opportunity to complete electives from the shared pool. You'll also have access to the Open Learning Environment. In the final year of the combined degree, you will undertake an honours option, or complete advanced coursework units in languages, multilingual projects and translation in up to three languages.

Career possibilities
Language localisation specialist, public relations officer, public policy officer, foreign affairs and trade officer, researcher, translator. This degree equips you with global capability plus the breadth and depth of knowledge and the critical and analytical skills to pursue an extensive range of established and emerging careers. It prepares you for the jobs of the future with an international focus.

Professional recognition
This degree is endorsed by the National Accreditation Authority for Translators and Interpreters (NAATI).



Dalyell Scholars
see page 11

Assumed knowledge and prerequisites
see page 25

† Mathematics prerequisite
see page 72

For important information
see page 72

Arts and social sciences courses

B Arts/B Advanced Studies (Media and Communications)		
Selection Rank: 95 Guaranteed Entry: Feb Duration (full time): 4 years Dalyell by invitation Assumed knowledge: Refer to B Arts/B Advanced Studies	Programs, majors and minors This stream requires completion of a program in Media and Communications, including a major in Media Studies. A second major must be taken from those available in the B Arts or from the shared pool. You'll also have access to the Open Learning Environment. In the final year of the combined degree you will undertake advanced coursework and a substantial real-world industry, community, entrepreneurship or research project, or an honours project.	Career possibilities Corporate communications officer, information officer, journalist (print, online, radio, television), market or media researcher, producer, public relations officer, public policy officer.

B Arts/B Advanced Studies (Politics and International Relations)		
Selection Rank: 92 Guaranteed Entry: Feb/Jul Duration (full time): 4 years Dalyell by invitation Assumed knowledge: Refer to B Arts/B Advanced Studies	Programs, majors and minors This stream requires completion of a program, including a major in Politics and International Relations. A second major must be taken from those available in the B Arts or from the shared pool. You'll also have access to the Open Learning Environment. In the final year of the combined degree you will undertake advanced coursework and a substantial real-world industry, community, entrepreneurship or research project, or an honours project.	Career possibilities Current affairs journalist, government and public service administrator, non-government or private sector administrator, policy researcher and consultant, political adviser, think-tank participant. This degree will equip you to pursue a wide range of careers where knowledge of the interactions between international and domestic politics is necessary.

B Arts (Dual Degree, Sciences Po, France)**		
Selection Rank: 80* + other admission criteria Entry: Jul (in France) Duration (full time): 2 + 2 years Assumed knowledge: Refer to B Arts	for University of Sydney-based majors. For information on studies in France, including units of study, please refer to the Sciences Po website: www.sciencespo.fr/en/home	Sciences Po Dual Degree applicants need to be recent school leavers – transfer applicants are not eligible to apply. In addition to meeting the academic requirements of an accepted secondary education (Year 12) qualification, you need to submit an online application directly to the University, including a personal statement, resume and school reports or transcripts from the past three years, as well as attend an online interview. For more information about admission criteria, tuition fees and the application process, visit the relevant course page. sydney.edu.au/courses
Programs, majors and minors This dual degree enables you to work towards both a B Arts degree at Sciences Po in France for the first two years, and a B Arts degree at the University of Sydney for the remaining two years. As part of your B Arts at the University of Sydney, you'll have access to the shared pool and the Open Learning Environment. Refer to B Arts	Career possibilities Anthropologist, archaeologist, business administrator or manager, economist, editor or publisher, foreign affairs and trade officer, government policy officer, historian, language specialist, journalist, museum or gallery curator, public relations manager, researcher, sociologist.	
	Additional admission criteria Bachelor of Arts and Bachelor of Economics	

B Visual Arts ϕ B Visual Arts/B Advanced Studies		
Selection Rank: 70* + portfolio Entry: Feb Duration (full time): 3 years (single)/4 years (combined)	Programs, majors and minors You will study across many areas in contemporary art, including ceramics, glass, jewellery, painting, photography, print media, screen arts and sculpture. In the combined degree, you will also take a major from a range of majors offered across the University, and complete advanced coursework units, including a substantial research, community, industry or entrepreneurship project, or an honours project in the final year.	of artwork. You are required to submit the portfolio by the relevant deadlines. When submitting the portfolio online, you will need to include a short statement describing one of the more developed projects in your portfolio. sydney.edu.au/arts/creative-arts-portfolio
	Career possibilities Artist, arts writer, craftsperson, curator, digital artist, art educator (with further tertiary qualifications), exhibition designer, filmmaker, illustrator, painter, product designer, sound artist, web and multimedia designer.	ϕ Creative Arts Special Admission Scheme (CASAS) Domestic applicants undertaking a current recognised high school (Year 12) qualification and applying via UAC may be eligible for an early offer of admission prior to the release of ATARs or equivalent scores under the University's Creative Arts Special Admission Scheme. Eligible applicants will be assessed based on a combination of academic performance and portfolio requirements. For details visit: sydney.edu.au/arts/creative-arts-portfolio
	Additional admission criteria You will also be assessed based on a portfolio	

Diploma of Arts		
Selection Rank: na Entry: Feb/Jul Duration (full time): 1 year Assumed knowledge: Depends on majors or units of study chosen.	Programs, majors and minors You will complete a major, a minor or a collection of units of study from the following subject areas: American Studies; Ancient History; Archaeology; Art History; Asian Studies; Biblical Studies and Classical Hebrew; Cultural Studies; Diversity Studies (minor only); Digital Cultures; English; Film Studies; Gender Studies; History; Jewish Civilisation, Thought and Culture; Linguistics; Music; Philosophy;	Studies in Religion; Theatre and Performance Studies; Writing Studies (minor only). Career possibilities Career opportunities depend on the area of study undertaken. A diploma can be used as a pathway to honours or postgraduate studies.

Diploma of Language Studies		
Selection Rank: na Entry: Feb/Jul Duration (full time): 1 year (depending on completion option selected) Note: No prior language experience required. Language skills are assessed by the department and students are placed in the appropriate level (beginner, intermediate or advanced) class.	Programs, majors and minors You will complete a major, a minor or a collection of units of study from the following language subject areas: Ancient Greek; Arabic Language and Cultures; Biblical Studies and Classical Hebrew; Chinese Studies; French and Francophone Studies; Germanic Studies; Hebrew (Modern); Indonesian Studies; Italian Studies; Japanese Studies; Korean Studies; Latin, Modern Greek Studies; Sanskrit (minor only); Spanish and Latin American Studies.	Career possibilities Career possibilities include public relations, public policy, foreign affairs and trade, research, translation, interpreting. This degree will add global capability to other areas of study undertaken and will prepare you for careers with an international focus. A diploma can be used as a pathway to honours or postgraduate studies.

Diploma of Social Sciences		
Selection Rank: na Entry: Feb/Jul Duration (full time): 1 year Assumed knowledge: Depends on majors or units of study chosen.	Programs, majors and minors You will complete a major, a minor or a collection of units of study from the following subject areas: Anthropology; Criminology; Economic Policy; International Relations; Political Economy; Politics, Socio-legal Studies; Sociology; Social Policy (minor only).	Career possibilities Career opportunities depend on the area of study undertaken. A diploma can be used as a pathway to honours or postgraduate studies.

* Selection ranks with an asterisk are indicative and not Guaranteed Entry.	of Sydney, including English language requirements. The higher of the English language requirements of the two partner institutions will apply.	pay the applicable fee direct to Sciences Po. During years 3-4, students enrol in the applicable Sydney degree (international students enrol in the applicable CRICOS-registered Sydney degree), with eligible transfer credits for studies undertaken at Sciences Po. Students pay the applicable Sydney fee in years 3-4 to the University of Sydney. Student visa holders who	commence this course may face additional costs associated with their student visa. For visa information, visit www.homeaffairs.gov.au
** Sciences Po and University of Sydney dual degrees Admission to the Sciences Po Dual Degree is highly competitive. Applicants will need to meet the minimum admission requirements for their degree of choice at the University	The Sciences Po degree requires a total of four years of full-time study to be eligible for two separate awards from Sciences Po and the University of Sydney. During years 1-2, students enrol at Sciences Po, France, and		

	Dalyell Scholars see page 11	Assumed knowledge and prerequisites see page 25	‡ Mathematics prerequisite see page 72	For important information see page 72
--	--	---	--	---



At the University of Sydney Business School, you'll acquire the skills to succeed as a business professional or build your own start-up. Graduate with the leadership abilities to drive positive change that has social, environmental and commercial impact.

Your global business journey starts here

Our Bachelor of Commerce and combined degrees will prepare you for career success in a dynamic and disruptive global economy. You'll be equipped with advanced disciplinary knowledge as well as critical thinking, communication and leadership skills. You'll have opportunities to study around the world and gain real-world experience with leading organisations. With a broad range of majors and a dedicated careers office for business students, you will be empowered to carve your own path to success.



“The Business School has helped me accelerate my career through networking opportunities with leading industry figures. I’ve developed great relationships within the University community through which I’ve gained mentoring, work placements and employability skills.”

Paris Vergan
Assistant International Trade Advisor, Business France
Bachelor of Commerce and Bachelor of Advanced Studies

top 1% of business schools worldwide with triple crown accreditation*

top 25 in the world for Accounting & Finance and top 50 for Business & Management Studies**

91.5% of undergraduate Business & Management students in employment 4 months after graduating***

* AACSB, AMBA and EQUIS accredited
** QS World University Rankings by Subject 2021
*** QILT Graduate Outcomes Survey 2021

Business courses

B Commerce
B Commerce/B Advanced Studies

Selection Rank: 96 Guaranteed
Entry: Feb/Jul
Duration (full time): 3 years (single)/4 years (combined)
Dalyell by invitation
Mathematics prerequisite†: Yes
Assumed knowledge: Mathematics Advanced or higher

Programs, majors and minors
You will choose one major from the options below and a second major (mandatory for B Commerce/B Advanced Studies) or a minor either from the shared pool or from these options: Accounting; Banking (major only); Business Analytics; Business Information Systems; Business Law; Finance (major only); Industrial Relations and Human Resource Management; Innovation and Entrepreneurship; International Business; Management and Leadership; Marketing; Professional Accounting (program). In the final year of the combined degree you will undertake advanced coursework and a substantial real-world industry, community, entrepreneurship or research project, or an honours project.

Career possibilities
Accountant, business analyst, entrepreneur, enterprise architect, financial dealer and broker, human resources specialist, international business consultant, investment banker, management consultant, marketing executive, policy adviser, project manager.

Combine B Commerce with
B Advanced Computing, B Engineering Honours, B Laws.

B Commerce/B Advanced Studies (Dalyell Scholars)

Selection Rank: 98 Guaranteed
Entry: Feb/Jul
Duration (full time): 4 years
Dalyell by application
Mathematics prerequisite†: Yes
Assumed knowledge: Mathematics Advanced or higher

Programs, majors and minors
Refer to B Commerce/B Advanced Studies. As a Dalyell Scholar, you will undertake 12 credit points of distinctive Dalyell units complemented by a suite of additional enrichment opportunities, including mentoring, professional skill development, co-curricular activities, and the option for a global mobility experience. You'll also complete units from the Open Learning Environment.

Career possibilities
Accountant, business analyst, entrepreneur, enterprise architect, financial dealer and broker, human resources specialist, international business consultant, investment banker, management consultant, marketing executive, policy adviser, project manager.



Economics



Economics is a fascinating and diverse discipline. The field addresses a range of issues that we face in modern life, playing a central role in shaping our society at every level.

Join the ranks of Australia's most employable

Economics is crucial to understanding and solving the major problems and unique challenges the world faces today. Our courses will equip you with the skills, knowledge, flexibility and industry expertise to address these issues, make real-world impact and succeed in your career – wherever it takes you. You'll graduate with a global and highly sought-after qualification.



“The Bachelor of Economics taught me the fundamental principles of economics, as well as how to critique them. This helped me to interpret anything from financial news to human behaviour. My education saw me move from a part-time call centre job to head of commercial property research at the same company. The interdisciplinary approach and analytical thinking encouraged within the degree make it applicable to a wide range of industries.”

Eliza Owen

Commercial Property Research Analyst, CoreLogic
Bachelor of Economics (Honours)

top 5
Ranked in the top five universities in Australia for Economics*

1st
The University of Sydney is ranked #1 in Australia and #4 in the world for graduate employability**



Australia's most popular economics program

*QS World University Rankings for Economics & Econometrics 2021
**QS Graduate Employability Rankings 2022

Economics courses

B Economics B Economics/B Advanced Studies

Selection Rank: 91 Guaranteed

Entry: Feb/Jul

Duration (full time): 3 years (single)/4 years (combined)

Dalyell by invitation

Mathematics prerequisite[†]: Yes

Assumed knowledge: Mathematics Advanced or higher

Programs, majors and minors

You will complete a program in Economics which includes a major from the list below, and a second major (mandatory for B Economics/B Advanced Studies) or a minor from the shared pool or from the following: Economics; Econometrics; Financial Economics; Environmental, Agricultural and Resource Economics. You'll also complete units from the Open Learning Environment. In the final year of the combined degree you will undertake advanced coursework and a substantial real-world industry, community, entrepreneurship or research project, or an honours project.

Career possibilities

Accountant, banker, business consultant, business information systems analyst, economic analyst, economist, financial manager, government or NGO worker, human resource manager, industrial relations specialist, researcher, social policy adviser. This degree will equip you with the capabilities to develop economic and social policy and to work in fields such as business, banking, financial markets and consulting in both the private and public sectors.

Combine B Economics with
B Laws.

B Economics (Dual Degree, Sciences Po, France)**

Selection Rank: 91* + other admission criteria

Entry: Jul (in France)

Duration (full time): 2 + 2 years

Dalyell by application

Mathematics prerequisite[†]: Yes

Assumed knowledge: Mathematics Advanced or higher

Programs, majors and minors

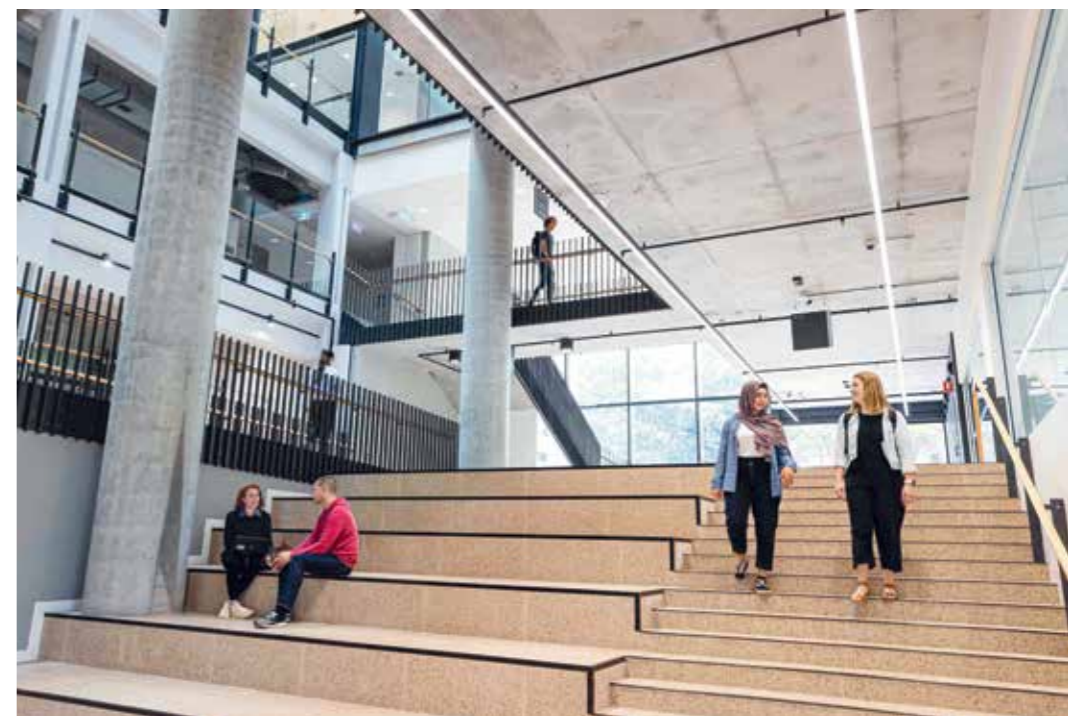
Refer to B Economics for University of Sydney based-majors. For further information on studies in France, including units of study, please refer to the Sciences Po website: www.sciencespo.fr/en/home

Additional admission criteria

See B Arts (Dual Degree, Sciences Po, France) on page 43.

Career possibilities

Accountant, banker, business consultant, business information systems analyst, economic analyst, economist, financial manager, human resource manager, industrial relations specialist, researcher, social policy adviser.



Dalyell Scholars
see page 11

Assumed knowledge and prerequisites
see page 25

† Mathematics prerequisite
see page 72

For important information
see page 72

Education and Social Work



Do what you love and make a world of difference through teaching or social work. At Sydney, you'll be challenged to explore complex ideas and issues in your chosen field and graduate an informed, effective practitioner.

Become a confident practitioner

With strong connections in both the education and social work sectors, our advanced placement program encourages meaningful practical experiences. Throughout your course, you'll apply your theoretical knowledge in real-world settings and develop the professional skills to graduate with confidence.

25th in the world
for education*



Our teacher education
degrees are accredited
by the NSW Education
Standards Authority (NESA)



Our social work degrees
are accredited by the
Australian Association of
Social Workers (AASW)

* QS World University
Rankings 2021 by subject



“As a student, I loved being part of a community that dedicated itself to considering the big issues that our society and culture face. Since then, I’ve always sought to be the kind of teacher who cares about students first and subjects second.”

Eddie Woo
Leader of Mathematics Growth, NSW Department of Education; Founder of Wootube Bachelor of Education (Secondary: Mathematics)** (Honours)

**B Education (Secondary: Mathematics) has been replaced by Bachelor of Education (Secondary)

Education and social work courses

B Education (Early Childhood)			
Selection Rank: 77 Guaranteed Entry: Feb Duration (full time): 4 years		Programs, majors and minors You'll study specialist units in early childhood education, development, and professional practice, complemented by generalist units in an Education Studies major, offered by the Faculty of Arts and Social Sciences.	Career possibilities Teacher in a range of early learning centres and preschools (birth–5 years). Qualified early childhood teachers are in high demand and early childhood education is a high priority for both federal and state governments in Australia. Professional recognition Australian Children's Education and Care Quality Authority (ACECQA).
B Education (Health and Physical Education)^			
Selection Rank: 80 Guaranteed + statement Entry: Feb Duration (full time): 4 years Prerequisites: NSW Education Standards Authority (NESA) requirement of a Band 5 in three HSC subjects, one of which needs to be English (Standard or Advanced or ESL/EALD) or equivalent.		Programs, majors and minors You'll take core units of study in education and professional studies along with discipline study in Health and Physical Education. You'll also need to select a second teaching area from: Aboriginal studies, biology, chemistry, drama, English, history (ancient and modern), languages and mathematics. Professional experience placements (totalling 80 days) begin in the first year of the course and progressively increase until the final placement, when you will be competent to teach under minimal supervision.	Career possibilities Teacher in secondary schools or careers in training and human resource settings, community health, coaching, recreation and sport. Professional recognition NSW Education Standards Authority (NESA).
B Education (Primary)^			
Selection Rank: 85 Guaranteed + statement Entry: Feb Duration (full time): 4 years Prerequisites: NSW Education Standards Authority (NESA) requirement of a Band 5 in three HSC subjects (or equivalent) one of which must be English (Standard or Advanced or ESL/EALD); and Band 4 in Mathematics Standard (or equivalent) or higher Assumed knowledge: For the Mathematics specialisation: Mathematics Standard or higher For the Science Specialisation: any HSC Science subject (or equivalent).		Programs, majors and minors Throughout this degree you'll take generalist units of study in education and professional studies, along with an interdisciplinary unit offered by the Faculty of Arts and Social Sciences. The program provides an AITSL recognised Primary Teaching Specialisation in English and the option for advanced students to complete a Primary Teaching Specialisation in Mathematics, Science and Technology, or Primary Languages. This degree covers all the key learning areas (primary subject areas), with special attention to the mandatory areas of Aboriginal education, teaching English to speakers of other languages (TESOL) and special education. Professional experience placements (totalling 80 days) begin in the second year of the course and progressively increase until the final placement, when you will be competent to teach under minimal supervision.	Career possibilities Teacher in primary schools, curriculum consultant, educational administrator, educational researcher, government policy adviser. Professional recognition NSW Education Standards Authority (NESA).
<div><div></div><div>Dalyell Scholars see page 11</div></div>		<div><div></div><div>Assumed knowledge and prerequisites see page 25</div></div>	<div><div></div><div># Mathematics prerequisite see page 72</div></div>
<div><div></div><div>For important information see page 72</div></div>			

Education and social work courses

B Education (Secondary) B Education/B Advanced Studies (Secondary)				
Selection Rank: 80 Guaranteed + statement Entry: Feb Duration (full time): 4 years (single)/5 years (combined)	Programs, majors and minors In this new, revitalised degree, you'll take core units of study in education, along with intensive study and professional experience in two teaching areas and units from the Open Learning Environment. Your two teaching areas can be selected from either Arts or Science, in areas including: Aboriginal Studies, Biology, Business Studies, Chemistry, Drama, Economics, English, Geography, History, Judaic Studies, Languages, Mathematics, Physics, and Teaching English to Speakers of Other Languages (TESOL). You will need to complete at least a minor in your first teaching area. Professional experience placements (totalling 80 days) begin in the third year of the course and progressively increase until the final placement, when you will be competent to teach under minimal supervision. The	B Education/B Advanced Studies (Secondary) also offers you the opportunity to undertake advanced coursework, an honours research project or a third teaching area in either TESOL or Aboriginal Studies. Career possibilities Teacher in secondary schools in areas including Aboriginal Studies, biology, chemistry, drama, English, history, languages, mathematics, physics, and TESOL; curriculum consultant, educational administrator, educational researcher, government policy adviser, human resource manager. Professional recognition NSW Education Standards Authority (NESA).		
B Social Work				
Selection Rank: 80 Guaranteed Entry: Feb Duration (full time): 4 years Assumed knowledge: Depends on majors or units of study chosen.	Programs, majors and minors The Social Work program includes studies in mental health, social justice practice, work with children and families, social policy, human service systems, domestic violence, disability, disasters and climate change, impacts of poverty, First Nations studies and social research. You will learn to work alongside diverse groups and communities in Australia and overseas addressing critical social issues.	Career possibilities Aged care worker, children and families support worker, community worker in programs for people with disabilities, migrant and refugee liaison officer, international development worker, social policy adviser. Professional recognition Australian Association of Social Workers		
B Arts/B Social Work				
Selection Rank: 80 Guaranteed Entry: Feb Duration (full time): 5 years Assumed knowledge: Refer to B Arts and B Social Work Dalyell by invitation	Programs, majors and minors You will choose a major from the B Arts, and a second major or a minor either from those options or from the shared pool. You must complete a major in Sociology, or a minor in either Sociology or Social Policy. You will also complete the Social Work professional program alongside your BA for four years. Social work includes mental health, social justice practice, work with children and families, social policy, human service systems, domestic violence and research.	Career possibilities Social worker in health, community services, ageing, disability, mental health, community development, social policy, disasters and climate change, leadership and work with non-government organisations in Australia and overseas. Career opportunities also available related to the major chosen from the B Arts degree. See B Arts for more career possibilities. Professional recognition Australian Association of Social Workers		
Additional admission criteria Applicants for all Bachelor of Education degrees (except Early Childhood) are required to complete a brief personal statement as part of the application for admission. This requirement also applies to the Bachelor of Music (Music Education). For more information, visit sydney.edu.au/teacher-education-personal-statement				
^ NESA prerequisites for teaching degrees: The New South Wales Education Standards Authority (NESA) requires students entering the following teaching degrees to achieve a minimum of three Band 5s in their NSW HSC, one of which needs to be English (Standard or Advanced or English as a Second Language (ESL) or English as an Additional Language or Dialect (EALD) or equivalent): – Bachelor of Education (Health and Physical Education) – Bachelor of Education (Primary) – Bachelor of Music (Music Education)				
Additionally, the Bachelor of Education (Primary) requires students to achieve Band 4 in Mathematics Standard (or equivalent) or higher. For equivalent requirements for other Australian Year 12 qualifications, refer to the UAC website: uac.edu.au/future-applicants/admission-criteria/year-12-qualifications				
For other non-Australian secondary education (high school) qualifications, the University will assess whether you have achieved an equivalent standard through your high school studies. If you need to meet English proficiency requirements through a test such as IELTS, you will complete those requirements separately.				
+	Dalyell Scholars see page 11	Assumed knowledge and prerequisites see page 25	‡ Mathematics prerequisite see page 72	For important information see page 72



Engineering and Computer Science

Our fantastic new multimillion-dollar engineering and technology precinct includes unique student learning spaces.

Choose from our broad range of engineering, project management and advanced computing degrees and you will have the opportunity to make a positive and lasting impact on society. Our students graduate job-ready and study a digitally focused curriculum designed for the jobs of the future.

We produce job-ready graduates

You'll gain real-world work experience and have the opportunity to forge connections with our network of more than 1200 industry, not-for-profit and government organisations across engineering, computing and project management. The variety of specialisations, majors and cross-disciplinary units available ensure you're able to pursue your passion and interests and stand out in the job market.



“The best part of my placement at Cochlear was knowing that my work contributed to providing the gift of hearing to people who receive these life-changing devices.”

Bethany O'Neill
Engineering Sydney Industry Placement Scholarship (ESIPS) recipient
Bachelor of Engineering Honours and
Bachelor of Science (Medical Science)

\$200M

We've invested over \$200m into our new engineering and technology precinct to support leading research and student learning

20+

Our new engineering digital curriculum allows you to select from more than 20 specialisations

1200+

We have access to more than 1200 industry, not-for-profit and government partners, so you gain real-world work experience before you graduate

Engineering and computer science courses

B Advanced Computing

Selection Rank: 90 Guaranteed
Entry: Feb/Jul
Duration (full time): 4 years
Dalyell by invitation
Mathematics prerequisite[‡]: Yes
Assumed knowledge: Mathematics Extension 1

Majors

You'll choose one computing major from the list below, with the option of also choosing either a second major or a minor from this list or from the shared pool: Computer Science, Computational Data Science, Cybersecurity, Software Development. You'll also have access to the Open Learning Environment to broaden your skills and explore other areas of study.

Career possibilities

Computer programmer, computer system administrator, consultant, entrepreneur,

information services manager, systems analyst, software engineer, user experience designer, web developer and manager.

Professional recognition

This degree is accredited by the Australian Computer Society. Our graduates are recognised internationally through the Seoul Accord.

Combine this degree with

B Commerce, B Science, B Science (Health), B Science (Medical Science).

B Advanced Computing/B Commerce

Selection Rank: 96 Guaranteed
Entry: Feb/Jul
Duration (full time): 5 years
Dalyell by invitation
Mathematics prerequisite[‡]: Yes
Assumed knowledge: Mathematics Extension 1.
For B Commerce: depends on majors or units of study chosen.

Majors

Refer to B Advanced Computing and B Commerce. You'll choose one major from each degree. You'll also have access to the Open Learning Environment to broaden your skills and explore other areas of study.

Career possibilities

Accountant, business systems analyst, computer programmer, computer system administrator, economist, financial specialist,

information services manager, management consultant, project manager, software engineer, web developer and manager.

Professional recognition

This degree is accredited by the Australian Computer Society. Our graduates are recognised internationally through the Seoul Accord.

B Advanced Computing/B Science

Selection Rank: 90 Guaranteed
Entry: Feb/Jul
Duration (full time): 5 years
Dalyell by invitation
Mathematics prerequisite[‡]: Yes
Assumed knowledge: Mathematics Extension 1.
For B Science: depends on majors or units of study chosen.

Majors

Refer to B Advanced Computing and B Science. You'll choose one major from each degree. You'll also have access to the Open Learning Environment to broaden your skills and explore other areas of study.

Career possibilities

Computer programmer, consultant, geophysicist, information services manager,

mathematician, microbiologist, software engineer, systems analyst, web developer and manager.

Professional recognition

This degree is accredited by the Australian Computer Society. Our graduates are recognised internationally through the Seoul Accord.

B Advanced Computing/B Science (Health)

Selection Rank: 90 Guaranteed
Entry: Feb/Jul
Duration (full time): 5 years
Dalyell by invitation
Mathematics prerequisite[‡]: Yes
Assumed knowledge: Mathematics Extension 1.
Also see B Science (Health)

Programs and majors

Refer to B Advanced Computing and B Science (Health). You'll complete a major from the options available in the B Advanced Computing and the Health major. You'll also have access to the Open Learning Environment to broaden your skills and explore other areas of study.

Career possibilities

Roles in computer programming, consultancy, corporate health, disability and ageing management and research,

global health research and policy analysis, hospital management, information services management, mental health and safety, software engineering, web development and management.

Professional recognition

This degree is accredited by the Australian Computer Society. Our graduates are recognised internationally through the Seoul Accord.

B Advanced Computing/B Science (Medical Science)

Selection Rank: 90 Guaranteed
Entry: Feb/Jul
Duration (full time): 5 years
Dalyell by invitation
Mathematics prerequisite[‡]: Yes
Assumed knowledge: Mathematics Extension 1, Chemistry and either Physics or Biology

Majors

Refer to B Advanced Computing and B Science (Medical Science). You'll choose one major from the options available in the B Advanced Computing; and complete the stream in Medical Science, which requires a program in Medical Science, including a Medical Science major.

Career possibilities

Computer programmer, consultant, doctor (after further study in medicine), geneticist,

infectious diseases researcher, information services manager, microbiologist, pathologist, software engineer, systems analyst, web developer and manager.

Professional recognition

This degree is accredited by the Australian Computer Society. Our graduates are recognised internationally through the Seoul Accord.



Dalyell Scholars
see page 11

Assumed knowledge and prerequisites
see page 25

‡ Mathematics prerequisite
see page 72

For important information
see page 72

Engineering and computer science courses

B Engineering Honours (Aeronautical)		
Selection Rank: 90 Guaranteed Entry: Feb/Jul Duration (full time): 4 years Mathematics prerequisite^a: Yes Assumed knowledge: Mathematics Extension 1 and Physics	or Aerospace Research. You may also broaden your studies by choosing a specialisation in Engineering Data Science, Innovation and Entrepreneurship, Humanitarian Engineering or Computer Systems. Specialisations are optional. If you are a high-achieving student with an ATAR of 99+ (or equivalent) you may apply for Space Engineering.	positions, and manufacturing and assembly.
Specialisations You may choose an Aeronautical Engineering specialisation in Flight Data Analysis, Engineering Aerodynamics, Aerospace Design	Career possibilities Design research and certification in the airline/ aerospace industry, general engineering	Professional recognition This engineering degree is accredited by Engineers Australia. Our graduates are recognised internationally through the Washington Accord of the International Engineering Alliance.
	Combine this degree with B Arts, B Commerce, B Laws, B Project Management, B Science.	

B Engineering Honours (Biomedical)		
Selection Rank: 90 Guaranteed Entry: Feb/Jul Duration (full time): 4 years Mathematics prerequisite^a: Yes Assumed knowledge: Mathematics Extension 1, Physics and/or Chemistry	a specialisation in Engineering Data Science, Innovation and Entrepreneurship, Humanitarian Engineering or Computer Systems. Specialisations are optional.	research centres, and government institutions.
Specialisations You may choose a Biomedical Engineering specialisation in Nanoscale Biotechnology, Biocomputation, Bionics and Bioelectronics or Biomedical Modelling and Design. You may also broaden your studies by choosing	Career possibilities Biomedical engineers design and manufacture implantable and external medical devices. Careers include instrumentation engineer, device design engineer, medical device assessor, quality control and validation engineer, patent examiner, clinical support specialist, and field service engineer, for medtech companies, hospitals, medical	Professional recognition This engineering degree is accredited by Engineers Australia. Our graduates are recognised internationally through the Washington Accord of the International Engineering Alliance.
	Combine this degree with B Arts, B Commerce, B Laws, B Project Management, B Science, B Science (Health), B Science (Medical Science).	

B Engineering Honours (Chemical and Biomolecular)		
Selection Rank: 90 Guaranteed Entry: Feb/Jul Duration (full time): 4 years Mathematics prerequisite^a: Yes Assumed knowledge: Mathematics Extension 1 and Chemistry	Bioprocessing, Water and Environmental Treatment Processes, Process Intensification or Industry 4.0 in Chemical Engineering. You may also broaden your studies by choosing a specialisation in Engineering Data Science. Specialisations are optional.	Professional recognition This degree is accredited by Engineers Australia and the Institution of Chemical Engineers. Our graduates are recognised internationally through the Washington Accord of the International Engineering Alliance.
Specialisations You may choose a Chemical and Biomolecular Engineering specialisation in Food and	Career possibilities All sectors of the process industries, from primary resource industries through to fine chemicals and sophisticated manufacturing.	Combine this degree with B Arts, B Commerce, B Laws, B Project Management, B Science.

B Engineering Honours (Civil)		
Selection Rank: 90 Guaranteed Entry: Feb/Jul Duration (full time): 4 years Mathematics prerequisite^a: Yes Assumed knowledge: Mathematics Extension 1 and Physics	Geotechnical Engineering, Humanitarian Engineering, Project Management or Transport. You may also broaden your studies by choosing a specialisation in Engineering Data Science, Innovation and Entrepreneurship or Computer Systems. Specialisations are optional.	project management and public works, sustainability specialist.
Specialisations You may choose a Civil Engineering specialisation in Structures, Environmental Fluids, Integrated Building Engineering,	Career possibilities Aid worker, airport and harbour authorities, banks, construction and mining companies, engineering and infrastructure consultants, humanitarian engineer, town planner,	Professional recognition This degree is accredited by Engineers Australia. Our graduates are recognised internationally through the Washington Accord of the International Engineering Alliance.
	Combine this degree with B Arts, B Commerce, B Design in Architecture, B Laws, B Project Management, B Science.	

B Engineering Honours (Dalyell Scholars)		
Selection Rank: 98 Guaranteed Entry: Feb/Jul Duration (full time): 4 years Dalyell by application Mathematics prerequisite^a: Yes Assumed knowledge: Mathematics Extension 1 and either Physics or Chemistry, depending on the engineering stream (refer to the relevant stream).	Specialisations As a Dalyell Scholar, you will undertake 12 credit points of distinctive Dalyell units complemented by a suite of additional enrichment opportunities, including mentoring, professional skill development and the option for a global mobility experience.	range of opportunities across the public and private sectors, including: business, banking, consulting, entrepreneurship and project management.
	Career possibilities Along with career options from your chosen stream, the valuable insights you gain through your studies as a Dalyell Scholar will set you apart from your peers and open up a	Professional recognition The Dalyell stream is completed within an Engineering stream accredited by Engineers Australia. Our graduates are also recognised internationally through the Washington Accord of the International Engineering Alliance.

B Engineering Honours (Electrical)		
Selection Rank: 90 Guaranteed Entry: Feb/Jul Duration (full time): 4 years Mathematics prerequisite^a: Yes Assumed knowledge: Mathematics Extension 1 and Physics	Telecommunications Engineering. You may also broaden your studies by choosing a specialisation in Engineering Data Science, Innovation and Entrepreneurship or Humanitarian Engineering. Specialisations are optional.	Professional recognition This engineering degree is accredited by Engineers Australia. Our graduates are recognised internationally through the Washington Accord of the International Engineering Alliance.
Specialisations You may choose an Electrical Engineering specialisation in Computer Engineering, Internet of Things, Intelligent Information Engineering, Power Engineering or	Career possibilities Grid maintenance and stability contractor, industry power supply engineer, power transmission and generating systems engineering, specialised consulting companies and telecommunications.	Combine this degree with B Arts, B Commerce, B Laws, B Project Management, B Science.

B Engineering Honours (Flexible First Year)		
Selection Rank: 90Guaranteed Entry: Feb Duration (full time): 4 years Mathematics prerequisite^a: Yes Assumed knowledge: Mathematics Extension 1, Physics and/or Chemistry	to pursue an area of specialisation once you have transferred to a stream. Refer to the individual engineering streams for areas in which you may be able to specialise.	transfer to an Engineering stream accredited by Engineers Australia. Our graduates are also recognised internationally through the Washington Accord of the International Engineering Alliance.
Specialisations After commencing your studies in the Flexible First Year stream, you will have the opportunity	Career possibilities Refer to individual engineering streams for examples.	Combine this degree with B Arts, B Commerce, B Laws, B Project Management, B Science.
	Professional recognition Students in the Flexible First Year pathway	

B Engineering Honours (Mechanical)		
Selection Rank: 90 Guaranteed Entry: Feb/Jul Duration (full time): 4 years Mathematics prerequisite^a: Yes Assumed knowledge: Mathematics Extension 1 and Physics	Design Engineering. You may also broaden your studies by choosing a specialisation in Engineering Data Science, Innovation and Entrepreneurship, Humanitarian Engineering or Computer Systems. Specialisations are optional. If you are a high-achieving student with an ATAR of 99+ (or equivalent) you may apply for Space Engineering.	pollution control, manufacturing industry, and mineral exploration.
Specialisations You may choose a Mechanical Engineering specialisation in Energy and the Environment, Computational Engineering, Mechanical Design, Thermofluids, Materials Science and Engineering or Industrial and Product	Career possibilities Automated facilities, automatic control systems, biomedical implant design, building industry, design of automotive, undersea exploration and space vehicles, environmental	Professional recognition This degree is accredited by Engineers Australia. Our graduates are recognised internationally through the Washington Accord of the International Engineering Alliance.
	Combine this degree with B Arts, B Commerce, B Laws, B Project Management, B Science.	

B Engineering Honours (Mechatronic)		
Selection Rank: 90 Guaranteed Entry: Feb/Jul Duration (full time): 4 years Mathematics prerequisite^a: Yes Assumed knowledge: Mathematics Extension 1 and Physics	choosing a specialisation in Engineering Data Science, Innovation and Entrepreneurship, Humanitarian Engineering or Computer Systems. Specialisations are optional. If you are a high-achieving student with an ATAR of 99+ (or equivalent) you may apply for Space Engineering.	design and development for real-time computer systems.
Specialisations You may choose a Mechatronic Engineering specialisation in Robotics and Intelligent Systems. You may also broaden your studies by	Career possibilities Automatic control systems, product design and development, robotics and automation for advanced manufacturing, and software	Professional recognition This degree is accredited by Engineers Australia. Our graduates are recognised internationally through the Washington Accord of the International Engineering Alliance.
	Combine this degree with B Arts, B Commerce, B Laws, B Project Management, B Science.	

B Engineering Honours (Software)		
Selection Rank: 90 Guaranteed Entry: Feb/Jul Duration (full time): 4 years Mathematics prerequisite^a: Yes Assumed knowledge: Mathematics Extension 1 and Physics	You may also broaden your studies by choosing a specialisation in Innovation and Entrepreneurship or Humanitarian Engineering. Specialisations are optional.	Professional recognition This degree is accredited by Engineers Australia and the Australian Computer Society. Our graduates are recognised internationally through the Washington Accord of the International Engineering Alliance and the Seoul Accord.
Specialisations You may choose a Software Engineering specialisation in Computer Systems, Engineering Data Science, Internet of Things or Intelligent Information Engineering.	Career possibilities Artificial intelligence, control systems, database management, information technology, internet programming, language compilers, multimedia and telecommunication software systems, real-time software engineering and reliable biomedical systems.	Combine this degree with B Arts, B Commerce, B Laws, B Project Management, B Science.

	Dalyell Scholars see page 11	Assumed knowledge and prerequisites see page 25	† Mathematics prerequisite see page 72	For important information see page 72
---	--	---	--	---

Engineering and computer science courses

B Engineering Honours with Space Engineering		
Selection Rank: 99 Guaranteed Entry: Feb/Jul Duration (full time): 4 years Dalyell by invitation Mathematics prerequisite[†]: Yes Assumed knowledge: Mathematics Extension 1 and Physics	Programs and majors Space Engineering is available to students in Aeronautical, Mechanical and Mechatronic streams – refer to the relevant stream. Space Engineering covers studies in aerospace systems, electronic devices and circuits, orbital mechanics, space vehicle design, and systems engineering. Career possibilities Along with career options from your chosen stream, you can apply your specialised knowledge of the space environment to careers in the aerospace, defence, environmental and research sectors.	Professional recognition Space Engineering is completed within an Engineering stream accredited by Engineers Australia. Our graduates are also recognised internationally through the Washington Accord of the International Engineering Alliance. Combine this degree with B Arts, B Commerce, B Laws, B Project Management, B Science.
B Engineering Honours/B Arts		
Selection Rank: 90 Guaranteed Entry: Feb/Jul Duration (full time): 5.5 years Dalyell by invitation Mathematics prerequisite[†]: Yes Assumed knowledge: Mathematics Extension 1 and either Physics or Chemistry, depending on the engineering stream (please refer to the relevant stream). For B Arts: depends on majors or units of study chosen.	Specialisations and majors In addition to the relevant B Engineering Honours stream requirements, you will take a major from B Arts. Career possibilities Refer to relevant B Engineering Honours stream and B Arts.	Professional recognition This engineering degree is accredited by Engineers Australia. Our graduates are recognised internationally through the Washington Accord of the International Engineering Alliance.
B Engineering Honours/B Commerce		
Selection Rank: 96 Guaranteed Entry: Feb/Jul Duration (full time): 5.5 years Dalyell by invitation Mathematics prerequisite[†]: Yes Assumed knowledge: Mathematics Extension 1 and either Physics or Chemistry, depending on the engineering stream (please refer to the relevant stream). For B Commerce: depends on majors or units of study chosen.	Specialisations and majors In addition to the relevant B Engineering Honours stream requirements, you will take a major from B Commerce. Career possibilities Refer to relevant B Engineering Honours stream and B Commerce.	Professional recognition This combined degree is accredited by Engineers Australia. Our graduates are recognised internationally through the Washington Accord of the International Engineering Alliance.
B Engineering Honours (Civil)/B Design in Architecture		
Selection Rank: 95 Guaranteed Entry: Feb Duration (full time): 5 years Mathematics prerequisite[†]: Yes Assumed knowledge: Mathematics Extension 1 and Physics; for Architecture: English Advanced	Specialisations and majors Refer to the B Engineering Honours (Civil) stream and B Design in Architecture for requirements. Career possibilities Aid worker, airport and harbour authorities, architect (with further study), architectural technology, banking, construction and mining, engineering and infrastructure consultants, humanitarian engineer,	interior and spatial design, municipal councils, project management, property development, public works and urban design, sustainability specialist. Professional recognition This combined degree is accredited by Engineers Australia. Our graduates are recognised internationally through the Washington Accord of the International Engineering Alliance.
B Engineering Honours/B Project Management		
Selection Rank: 90 Guaranteed Entry: Feb/Jul Duration (full time): 5 years Mathematics prerequisite[†]: Yes Assumed knowledge: Mathematics Extension 1 and either Physics or Chemistry, depending on the engineering stream; refer to the relevant stream.	Specialisations and majors In addition to the B Engineering stream requirements, you will undertake a selection of core and elective project management units of study. Career possibilities Refer to the relevant B Engineering Honours stream and B Project Management.	Professional recognition This combined degree is accredited by Engineers Australia and the Project Management Institute Global Accreditation Centre. Our graduates are recognised internationally through the Washington Accord of the International Engineering Alliance.

B Engineering Honours/B Science			
Selection Rank: 90 Guaranteed Entry: Feb/Jul Duration (full time): 5 years Dalyell by invitation Mathematics prerequisite[‡]: Yes Assumed knowledge: Mathematics Extension 1 and either Physics or Chemistry, depending on the Engineering stream (please refer to the relevant stream). For B Science: depends on majors or units of study chosen.	Specialisations and majors In addition to the relevant B Engineering Honours stream requirements, you will take a major from B Science. Career possibilities Refer to the relevant B Engineering Honours stream and B Science.	Professional recognition This combined degree is accredited by Engineers Australia. Our graduates are recognised internationally through the Washington Accord of the International Engineering Alliance.	
B Engineering Honours (Biomedical)/B Science (Health)			
Selection Rank: 90 Guaranteed Entry: Feb/Jul Duration (full time): 5 years Dalyell by invitation Mathematics prerequisite[‡]: Yes Assumed knowledge: Mathematics Extension 1, Chemistry.	Programs and majors In addition to the B Engineering Honours (Biomedical) stream requirements, you will complete a Health major in B Science (Health). Career possibilities Refer to B Engineering Honours (Biomedical) stream and B Science (Health).	Professional recognition This combined degree is accredited by Engineers Australia. Our graduates are recognised internationally through the Washington Accord of the International Engineering Alliance.	
B Engineering Honours (Biomedical)/B Science (Medical Science)			
Selection Rank: 90 Guaranteed Entry: Feb/Jul Duration (full time): 5 years Dalyell by invitation Mathematics prerequisite[‡]: Yes Assumed knowledge: Mathematics Extension 1, Chemistry, Physics and/or Biology (depending on B Science (Medical Science) units of study chosen).	Specialisations and majors In addition to the relevant B Engineering Honours stream requirements, you will complete a program in Medical Science, including a Medical Science major in B Science (Medical Science). Career possibilities Refer to the relevant B Engineering Honours stream and B Science (Medical Science).	Professional recognition This combined degree is accredited by Engineers Australia. Our graduates are recognised internationally through the Washington Accord of the International Engineering Alliance.	
B Project Management			
Selection Rank: 86 Guaranteed Entry: Feb/Jul Duration (full time): 3 years Mathematics prerequisite[‡]: Yes Assumed knowledge: Mathematics Extension 1	Programs and majors Choose one major either from the project management options in Construction or Built Environment, or from the shared pool of majors. Built Environment major units are held within the University of Sydney School of Architecture, Design and Planning. You can also take a project management minor in People and Change, or Project Controls.	Career possibilities Professional and management roles in property development, construction, mining, events, IT, banking and finance, state or federal government or in consultancy roles in engineering, water health or energy sectors. Professional recognition This degree is accredited by the Project Management Institute Global Accreditation Centre for Project Management Education programs. Combine this degree with B Engineering Honours.	
<div><div><div>+</div></div><div>Dalyell Scholars see page 11</div></div>	<div>Assumed knowledge and prerequisites see page 25</div>	<div>‡ Mathematics prerequisite see page 72</div>	<div>For important information see page 72</div>

Law

With more than 150 years of research-led education, we're ranked 14th in the world for law. Together with another degree of your choosing, develop highly sought-after skills to become a leader in your chosen career and create change in a global environment.

Learn from the best legal minds

At Sydney Law School, you will learn from globally recognised legal educators and highly respected professional practitioners, gain an internationally relevant legal education with overseas opportunities, and be equipped with skills that will prepare you for the global marketplace.



“The University of Sydney has an outstanding reputation for law and an engaged student body with a huge range of clubs and societies. The flexible degree structure with the Bachelor of Arts also opened up a lot of opportunities.”

Mitchell Cleaver
Bachelor of Arts and Bachelor of Laws

14th in the world* for law, we are one of the world's leading law schools



Apply classroom knowledge to real-world cases with social justice and law reform activities



Strategic partnerships with world-leading universities provide global opportunities to study abroad

* QS World Rankings by Subject 2021

Law courses

B Arts/B Laws

Selection Rank: 99.5 Guaranteed
Entry: Feb
Duration (full time): 5 years
Dalyell by invitation
Assumed knowledge: Refer to B Arts; for B Laws: none

Programs, majors and minors
Refer to B Arts. Units of study for B Laws: **First year:** Foundations of Law, Legal Research, Torts. **Second year:** Civil and Criminal Procedure, Contracts, Criminal Law. **Third year:** Torts and Contracts II, Public International Law, Public Law, Legal Research II. **Fourth year:** Administrative Law, Corporations Law, Equity, Evidence, Federal Constitutional Law, Introduction to Property and Commercial Law, Real Property

and the Legal Profession. **Fifth year:** Private International Law A and seven elective units of study.

Career possibilities

Refer to B Arts. For B Laws: solicitor, barrister, magistrate, judge, diplomacy, foreign affairs, human rights, international relations, investment banking, journalism, management consultancy, public policy.

B Commerce/B Laws

Selection Rank: 99.5 Guaranteed
Entry: Feb
Duration (full time): 5 years
Dalyell by invitation
Mathematics prerequisite[‡]: Yes
Assumed knowledge: Mathematics Advanced or higher; other assumed knowledge depends on majors and units of study chosen; for B Laws: none

Programs, majors and minors
Refer to B Commerce. Units of study for B Laws: **First year:** Foundations of Law, Legal Research, Torts. **Second year:** Civil and Criminal Procedure, Contracts, Criminal Law. **Third year:** Torts and Contracts II, Public International Law, Public Law, Legal Research II. **Fourth year:** Administrative Law, Corporations Law, Equity, Evidence, Federal Constitutional Law, Introduction to Property and Commercial Law, Real Property

and the Legal Profession. **Fifth year:** Private International Law A and seven elective units of study.

Career possibilities

Refer to B Commerce. For B Laws: solicitor, barrister, magistrate, judge, diplomacy, foreign affairs, human rights, international relations, investment banking, journalism, management consultancy, public policy.

B Economics/B Laws

Selection Rank: 99.5 Guaranteed
Entry: Feb
Duration (full time): 5 years
Dalyell by invitation
Mathematics prerequisite[‡]: Yes
Assumed knowledge: Mathematics Advanced or higher; for B Laws: none

Programs, majors and minors
Refer to B Economics. Units of study for B Laws: **First year:** Foundations of Law, Legal Research, Torts. **Second year:** Civil and Criminal Procedure, Contracts, Criminal Law. **Third year:** Torts and Contracts II, Public International Law, Public Law, Legal Research II. **Fourth year:** Administrative Law, Corporations Law, Equity, Evidence, Federal Constitutional Law, Introduction to Property and Commercial Law, Real Property

and the Legal Profession. **Fifth year:** Private International Law A and seven elective units of study.

Career possibilities

Refer to B Economics. For B Laws: solicitor, barrister, magistrate, judge, diplomacy, foreign affairs, human rights, international relations, investment banking, journalism, management consultancy, public policy.

B Engineering Honours/B Laws

Selection Rank: 99.5 Guaranteed
Entry: Feb
Duration (full time): 6.5 years
Mathematics prerequisite[‡]: Yes
Assumed knowledge: Mathematics Extension 1 and either Physics or Chemistry, depending on the engineering stream; refer to the relevant stream; for B Laws: none

Programs, majors and minors
In addition to the relevant B Engineering stream requirements, you will undertake law units of study. Units of study for B Laws: **First year:** Foundations of Law, Legal Research, Torts. **Second year:** Civil and Criminal Procedure, Contracts, Criminal Law. **Third year:** Torts and Contracts II, Public International Law, Public Law, Legal Research II. **Fourth year:** Administrative Law, Corporations Law, Equity, Evidence, Federal Constitutional Law, Introduction to Property and Commercial Law, Real Property

Property and Commercial Law, Real Property and the Legal Profession. **Fifth year:** Private International Law A and seven elective units of study.

Career possibilities

Refer to the relevant B Engineering Honours stream. For B Laws: solicitor, barrister, magistrate, judge, diplomacy, foreign affairs, human rights, international relations, investment banking, journalism, management consultancy, public policy.

B Science/B Laws

Selection Rank: 99.5 Guaranteed
Entry: Feb
Duration (full time): 5 years
Dalyell by invitation
Mathematics prerequisite[‡]: Yes
Assumed knowledge: Mathematics Advanced or higher; other assumed knowledge depends on majors and units of study chosen; for B Laws: none

Programs, majors and minors
Refer to B Science. Please note that the only stream available in this combined degree is the Dalyell stream. Units of study for B Laws: **First year:** Foundations of Law, Legal Research, Torts. **Second year:** Civil and Criminal Procedure, Contracts, Criminal Law. **Third year:** Torts and Contracts II, Public International Law, Public Law, Legal Research II. **Fourth year:** Administrative Law, Corporations Law, Equity, Evidence, Federal Constitutional Law, Introduction to Property and Commercial Law, Real Property and the Legal Profession. **Fifth year:** Private International Law A and seven elective units of study.

Career possibilities

Refer to B Science and options below for science-specific careers: environmental lawyer, urban and regional planner, occupational health and safety specialist, forensic science technician, science policy specialist, technical specialist or associate undertaking intellectual property cases in science patents, copyright and trademark disputes. For B Laws: solicitor, barrister, magistrate, judge, diplomacy, foreign affairs, human rights, international relations, investment banking, journalism, management consultancy, public policy.



Dalyell Scholars
see page 11

Assumed knowledge and prerequisites
see page 25

‡ Mathematics prerequisite
see page 72

For important information
see page 72

Medicine and Health

There has never been a better time to study medicine and health. With healthcare professionals in high demand across the world, we are empowering future leaders in the field. Choose from the largest range of health degrees of any Australian university and graduate ready to enter the health workforce.



Our degrees will kickstart your career in health

Health care is one of the fastest growing industries around the world. At Sydney, you'll learn with academic experts and students in many health disciplines to develop a range of invaluable skills, from patient interaction to teamwork, leadership and research.



“I applied for diagnostic radiography after working in an emergency department and seeing the amazing work that can be done with medical imaging. My highlight so far was the clinical placement in Darwin and working with Indigenous communities.”

Tom Readford

Bachelor of Applied Science (Diagnostic Radiography)

top 20 worldwide for exercise and sport, medicine, pharmacy and nursing*



You will learn in our new state-of-the-art Susan Wakil Health Building



Gain hands-on experience in our network of clinical placements across 8 major health districts

* QS World University Rankings by Subject 2021

Medicine and health courses

B Applied Science (Diagnostic Radiography)

Selection Rank: 96*

Entry: Feb

Duration (full time): 4 years

Programs, majors and minors

You will cover studies in anatomy, biological sciences, equipment and imaging techniques, image processing, pathology, physics, psychology and radiation biology.

Career possibilities

Diagnostic radiographer, with the opportunity

to work in a range of settings, such as small regional clinics, large metropolitan imaging departments, and hospital emergency departments.

Professional recognition

Medical Radiation Practice Board of Australia.

B Applied Science (Exercise and Sport Science)

B Applied Science/B Advanced Studies (Exercise and Sport Science)

Selection Rank: 82*

Entry: Feb

Duration (full time): 3 years (single)/4 years (combined)

Assumed knowledge: Chemistry and Mathematics Advanced or higher

Programs, majors and minors

You will complete a major in Exercise Science, and a minor or major in Physical Activity and Health. You can also take electives or an optional major or minor from the shared pool, or access to the Open Learning Environment to broaden your learning. You will complete two practicum experiences in the final year. For the combined degree you must complete a second major from the shared pool. In the final year of the combined degree you will undertake advanced coursework and a substantial real-world industry, community, entrepreneurship or research project, or an honours project.

Career possibilities

Accredited exercise scientist, coach, personal trainer, strength and conditioning specialist. Our graduates find careers in the sport, fitness and health industries; work health and safety; injury prevention; public health; exercise rehabilitation; research and technology; education and health; and medical insurance.

Professional Recognition

Exercise and Sport Science Australia (ESSA).

B Applied Science (Exercise Physiology)

Selection Rank: 91*

Entry: Feb

Duration (full time): 4 years

Assumed knowledge: Chemistry and Mathematics Advanced or higher

Programs, majors and minors

You will cover studies in biomechanics, clinical exercise practice, ergonomics, exercise physiology, functional anatomy, motor control and behaviour.

Career possibilities

Exercise physiologist. As an accredited exercise physiologist, you will have the opportunity to work across all sectors of

health care, including cardiac rehabilitation, musculoskeletal rehabilitation, mental health, long-term rehabilitation following spinal cord injury, ageing, occupational rehabilitation and programs for people with an intellectual disability.

Professional recognition

Exercise and Sport Science Australia (ESSA).

B Applied Science (Occupational Therapy)

Selection Rank: 93*

Entry: Feb

Duration (full time): 4 years

Programs, majors and minors

You will complete a major or minor in Disability, Participation and Health and cover studies in Physical and Psychosocial capacity, as well as human anatomy, medical sciences, neuroscience, occupational therapy theory and practice, psychology and social sciences. You will also undertake a placement to gain valuable practical experience.

Career possibilities

Occupational therapist. The breadth of occupational therapy means you can diversify

your career while staying within the same profession. For example, you could work one-on-one in rehabilitation with stroke or cancer survivors, then work with babies in a neonatal intensive care unit or young adults in a community mental health program.

Professional recognition

Occupational Therapy Board of Australia, Australian Health Practitioner Regulation Agency, Occupational Therapy Australia and the World Federation of Occupational Therapists.

B Applied Science (Physiotherapy)

Selection Rank: 99.5*

Entry: Feb

Duration (full time): 4 years

Assumed knowledge: Chemistry and Physics

Programs, majors and minors

You will cover studies in biomedical sciences, behavioural and social sciences, exercise science, human anatomy, human movement, neuroscience as well as theory and practice of musculoskeletal, neurological and cardiopulmonary physiotherapy across the lifespan. You will also undertake a placement to gain valuable practical experience.

Career possibilities

Physiotherapist. You can choose from a diverse range of physiotherapy and health promotion career options in both the public and private sectors, in settings such as healthcare organisations as well as sports, schools and community, and private practice.

Professional recognition

Australian Physiotherapy Council and Australian Health Practitioner Regulation Agency (AHPRA).



Dalyell Scholars see page 11

Assumed knowledge and prerequisites see page 25

Mathematics prerequisite see page 72

For important information see page 72

Medicine and health courses

B Applied Science (Speech Pathology)		
Selection Rank: 94* Entry: Feb Duration (full time): 4 years	Programs, majors and minors You will cover studies in anatomy, audiology, linguistics and language development, neurobiology, phonetics, psychology, research methods and speech pathology specialist areas (eg, aphasia, cleft palate, dysarthria, dysphagia, stuttering). You will also undertake a placement to gain valuable practical experience.	Career possibilities Speech pathologist, with the opportunity to work in diverse settings, including public and private hospitals, community health, mental health services, aged care facilities, schools and disability services. As a speech pathology graduate, you may also work in private practice, with the potential to operate your own business as a private practitioner. Professional recognition Speech Pathology Australia.

B Arts/D Medicine		
Selection Rank: 99.95* + other admission criteria Entry: Feb Duration (full time): 7 years Dalyell by invitation Mathematics prerequisite[‡]: Yes Assumed knowledge: Mathematics Advanced or higher; For B Arts: depends on majors or units of study chosen.	Programs, majors and minors Refer to B Arts. You will choose a major from the options available in the B Arts, and either a second major or a minor from these options or the shared pool. During the B Arts, you will also complete foundational knowledge units for medicine (in science), a zero-credit-point subject in medicine, and Open Learning Environment units. If you become a Dalyell Scholar, you will complete 12 credit points of distinctive Dalyell units designed to cultivate high-level graduate attributes. You will also have access to a suite of additional enrichment opportunities. In the Doctor of Medicine component, practical experience – including	contact with patients and observation of the physical aspects of disease – commences in the first year and continues to the final year. Career possibilities General practice, surgery or other specialities, research, pharmaceutical industry, forensic anthropologist, government policy officer, medical journalism, aid work, management consultancy, teaching, medical administration, medical communication. Professional recognition Australian Medical Council (AMC).

B Arts/M Nursing		
Selection Rank: 80 Guaranteed Entry: Feb Duration (full time): 4 years Assumed knowledge: For B Arts: Depends on the majors or units of study chosen; For M Nursing: none	Programs, majors and minors Refer to B Arts. You will choose a major from the B Arts and electives from those available in the B Arts or the shared pool. You'll also have access to the Open Learning Environment. Focus areas for nursing include: acute care, aged care, chronic illness, clinical practice, Indigenous health, mental health care and management, pharmacology, physiology, professional practice, social and health policy.	Career possibilities Registered nurse in a range of healthcare settings and highly employable in a range of non-clinical settings that include government, non-government organisations, business, education and research. Professional recognition Nursing and Midwifery Board of Australia.

B Nursing (Advanced Studies)		
Selection Rank: 84 Guaranteed Entry: Feb Duration (full time): 3 years	Programs, majors and minors Focus areas for nursing: acute care, aged care, child and adolescent health, chronic illness, clinical practice, Indigenous health, mental health care and management, pharmacology, physiology, primary health care, professional practice, social and health policy.	Career possibilities Registered nurse with a career in a range of healthcare settings, including emergency, intensive care, mental health, cancer and palliative care, aged care, child and adolescent health, international health, education and research. Professional recognition Nursing and Midwifery Board of Australia.

B Oral Health		
Selection Rank: 83* Entry: Feb Duration (full time): 3 years	Programs, majors and minors Your studies will include dental hygiene and dental therapy service as well as oral health promotion.	Career possibilities Oral health therapist, dental hygienist, dental therapist, community oral health educator/consultant/advocate. Professional recognition Australian Dental Council, Dental Board of Australia.

B Pharmacy (Honours)/M Pharmacy Practice		
Selection Rank: 90 Guaranteed Entry: Feb Duration (full time): 5 years Mathematics prerequisite[‡]: Yes Assumed knowledge: Mathematics Advanced or higher, Biology and Chemistry	practice. In the fourth year, you will undertake your honours research project, which could be based overseas in pharmacy-related settings or in the pharmaceutical industry. The work integrated learning component of this course, in the fifth year (Master of Pharmacy Practice), has been developed to satisfy the Australian Pharmacy Council pre-registration training requirements to become a registered pharmacist and includes the requirement to complete 1,824 hours (one year) of supervised practice training.	Career possibilities Pharmacist. Registered pharmacists in community pharmacy (community practice), hospital pharmacy, research positions within universities or research institutes, or positions in the pharmaceutical industry in drug production, marketing or drug development. Professional recognition The degree is accredited by the Australian Pharmacy Council and the supervised practice component is approved by the Pharmacy Board of Australia.

B Pharmacy and Management (Honours)/M Pharmacy Practice		
Selection Rank: 90 Guaranteed Entry: Feb Duration (full time): 6 years Mathematics prerequisite[‡]: Yes Assumed knowledge: Mathematics Advanced or higher, Biology and Chemistry	In the fifth year, you will undertake your honours research project, which could be based overseas in pharmacy-related settings or in the pharmaceutical industry. The work integrated learning component of this course, in the sixth year (Master of Pharmacy Practice), has been developed to satisfy the Australian Pharmacy Council pre-registration training requirements to become a registered pharmacist and includes the requirement to complete 1,824 hours (one year) of supervised practice training.	Career possibilities Pharmacist. Registered pharmacists in community pharmacy (community practice), hospital pharmacy, research positions within universities or research institutes, or positions in the pharmaceutical industry in drug production, marketing or drug development. Professional recognition The degree is accredited by the Australian Pharmacy Council and the supervised practice component is approved by the Pharmacy Board of Australia.

B Science/D Dental Medicine		
Selection Rank: 99.6* + other admission criteria Entry: Feb Duration (full time): 7 years Dalyell by invitation Mathematics prerequisite[‡]: Yes Assumed knowledge: For B Science: Mathematics Advanced and/or higher (depending on units of study selected), other assumed knowledge depends on majors or units of study chosen; For D Dental Medicine: None	Programs, majors and minors During the B Science, you could choose a wide range of majors and minors from across the sciences. Refer to B Science. You will also complete foundational knowledge units for biology and a zero-credit-point unit of independent learning related to dentistry and oral health. If you become a Dalyell Scholar, you will complete 12 credit points of distinctive Dalyell units designed to cultivate high-level graduate attributes. For the Doctor of Dental Medicine, you will study integrated clinical dentistry and life sciences, and also	conduct a research project related to dentistry and oral health. Career possibilities Dentist in private practice, public service (hospitals, schools, health departments), defence forces, oral health researcher, academic careers and a variety of specialisation options upon completion of professional and research experience. Professional recognition Dental Board of Australia.

B Science/D Medicine		
Selection Rank: 99.95* + other admission criteria Entry: Feb Duration (full time): 7 years Dalyell by invitation Mathematics prerequisite[‡]: Yes Assumed knowledge: For B Science: Mathematics Advanced and/or higher (depending on units of study selected), other assumed knowledge depends on majors or units of study chosen; For the Medical Science stream: Mathematics Advanced and/or higher (depending on units of study selected), Chemistry and Physics or Biology; For D Medicine: None	Programs, majors and minors Refer to B Science. You may elect to complete the Medical Science stream or choose from a wide range of majors from across the sciences and either a second major or minor from science or the shared pool. During the B Science, you will also complete foundational knowledge units for medicine (in science) and Open Learning Environment units. If you become a Dalyell Scholar, you will complete 12 credit points of distinctive Dalyell units designed to cultivate high-level graduate attributes. You will also have access to a suite of additional enrichment opportunities. In the Doctor of Medicine component, practical	experience – including contact with patients and observation of the physical aspects of disease – commences in the first year and continues to the final year. Career possibilities General practice, surgery or other specialities, research, pharmaceutical industry, management consultancy, teaching, medical administration, medical communication. Professional recognition Australian Medical Council (AMC).

Medicine and health courses

B Science/M Nursing		
<p>Selection Rank: 80 Guaranteed</p> <p>Entry: Feb</p> <p>Duration (full time): 4 years</p> <p>Dalyell by invitation</p> <p>Mathematics prerequisite*: Yes</p> <p>Assumed knowledge: For B Science: Mathematics Advanced and/or higher (depending on units of study selected), other assumed knowledge depends on majors or units of study chosen; For M Nursing: None</p>	<p>Programs, majors and minors</p> <p>You will choose one major from those available in B Science (refer to B Science) and Open Learning Environment units. Focus areas for nursing include: acute care, aged care, child and adolescent health, chronic illness, clinical practice, Indigenous health, mental health care and management, pharmacology, physiology, professional practice, social and health policy.</p>	<p>Career possibilities</p> <p>Registered nurse in a range of healthcare settings with the ability to use your knowledge of science in health issues such as infectious and non-communicable diseases, infection control, anatomy, physiology and biomedical science, pharmacology and research.</p> <p>Professional recognition</p> <p>Nursing and Midwifery Board of Australia.</p>
B Science (Health)/M Nursing		
<p>Selection Rank: 80 Guaranteed</p> <p>Entry: Feb</p> <p>Duration (full time): 4 years</p> <p>Dalyell by invitation</p> <p>Mathematics prerequisite*: Yes</p> <p>Assumed knowledge: For B Science (Health): Mathematics Advanced or higher, other assumed knowledge depends on majors or units of study chosen.</p>	<p>Programs, majors and minors</p> <p>You will complete a major in Health within the Health stream, a second major and Open Learning Environment units – refer to B Science (Health). Focus areas for nursing include: acute care, aged care, child and adolescent health, chronic illness, clinical practice, Indigenous health, mental health care and management, pharmacology, physiology, professional practice, social and health policy.</p>	<p>Career possibilities</p> <p>Registered nurse in a range of healthcare settings. You can apply your knowledge of health systems in industries supporting health care, including e-health, mental health, industrial relations and management.</p> <p>Professional recognition</p> <p>Nursing and Midwifery Board of Australia.</p>
B Science/M Nutrition and Dietetics		
<p>Selection Rank: 97.5*</p> <p>Entry: Feb</p> <p>Duration (full time): 5 years</p> <p>Dalyell by invitation</p> <p>Mathematics prerequisite*: Yes</p> <p>Assumed knowledge: Mathematics Advanced or higher, Chemistry and Biology; Other assumed knowledge depends on major or units of study chosen for the B Science.</p> <p>Programs, majors and minors</p> <p>For the B Science, you will need to complete a program in Nutrition and Dietetics, including</p>	<p>a major in Nutrition Science, a minor or a second major and units of study from the Open Learning Environment. Candidates need to successfully complete the Bachelor of Science to proceed to the Master of Nutrition and Dietetics.</p> <p>For M Nutrition and Dietetics, your studies will include nutritional science, nutritional assessment, professional studies, methods in research, medical nutrition therapy, public health nutrition food service management and 20 weeks of dietetics training placements and a semester of nutrition research.</p>	<p>Career possibilities</p> <p>Hospital dietitian, dietitian-nutritionist in private practice, hospitals or primary care, community and public health, in government or industry.</p> <p>Professional recognition</p> <p>A graduate of this program is eligible to become a full member of the Dietitians Association of Australia and to join the Accredited Practising Dietitian Program.</p>

Additional admission criteria

DENTISTRY

Bachelor of Science/Doctor of Dental Medicine

Admission is based on: ATAR or equivalent and satisfactory performance in an assessment process comprised of a written assessment and a panel discussion.

Applicants are only eligible for admission to the first available course intake following receipt of final results. Find out more about eligibility and how to apply at sydney.edu.au/dentistry/dddp

There are separate requirements for progression to the Doctor of Dental Medicine component of the double degree. For details, visit the course page: sydney.edu.au/courses/courses/uc/bachelor-of-science-and-doctor-of-dental-medicine.html

Our graduate entry option is available if you already have a bachelor’s degree. You should start the application process at least 12 months in advance. sydney.edu.au/courses/courses/pc/doctor-of-dental-medicine.html

MEDICINE

Bachelor of Arts/Doctor of Medicine

Bachelor of Science/Doctor of Medicine

Admission to the double degree medicine pathway is based on: ATAR or equivalent and satisfactory performance in an assessment process that includes a written assessment and a panel discussion.

Applicants are only eligible for admission to the first available course intake following receipt of final results. Find out more about eligibility and how to apply at sydney.edu.au/medicine/ddmp

There are separate requirements for progression to the Doctor of Medicine component of the double degree. For details, visit the course page: sydney.edu.au/courses

Our graduate entry option is available if you already have a bachelor’s degree. You should start the application process at least 12 months in advance. sydney.edu.au/medicine/ddmp

* Selection ranks with an asterisk are indicative and not Guaranteed Entry.

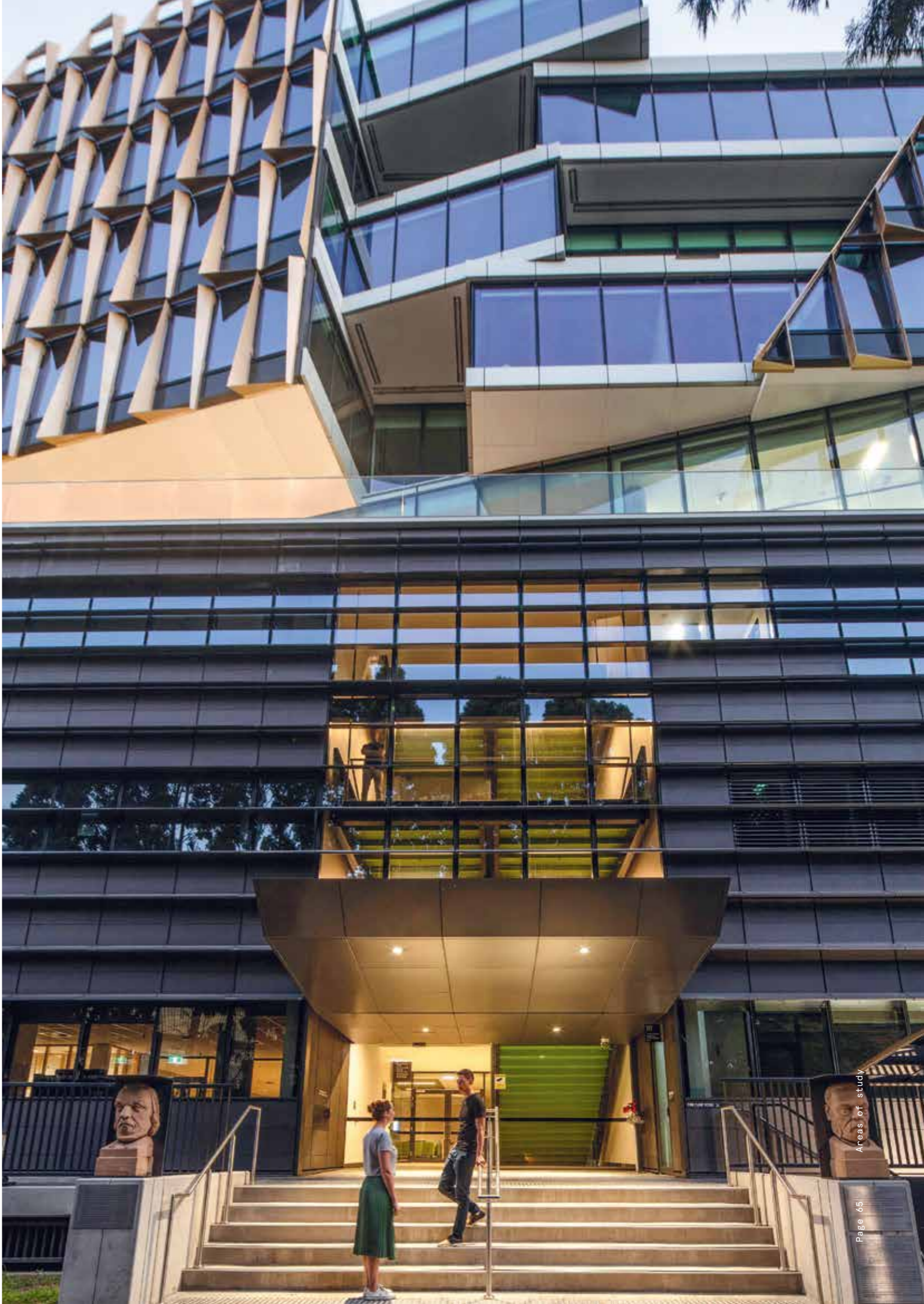


Dalyell Scholars
see page 11

Assumed knowledge and prerequisites
see page 25

† Mathematics prerequisite
see page 72

For important information
see page 72



Music

The Sydney Conservatorium of Music has been at the forefront of Sydney's musical and cultural life for more than 100 years. Explore a diverse range of programs to develop your unique musical voice, including classical performance, jazz, music composition for creative industries or the concert hall, digital music and media, contemporary music, Indigenous music, Asian music, music theatre, musicology and music education.

Make the music you want to hear

Sydney Conservatorium offers some of the best facilities for studying music in the Asia-Pacific region. You will have plenty of opportunities to perform or have your work recorded or performed. As part of your musical studies, you will have extensive opportunities to rehearse and perform with some of our ensembles lead by industry experts, including Symphony Orchestra, Wind Band, Choir, Jazz Big Band, Modern Music Ensemble and our Early Music Ensemble.

“The Con is one of the most prestigious music institutions in Australia, with a wide range of facilities. My advice to any prospective student is to simply go for it, work hard and support your peers whenever you possibly can. I believe the opportunities we gain from studying are what we make of them.”

Anna Da Silva Chen
Violinist
Bachelor of Music (Performance)

Complement your degree with a specialisation of your choice from the University's shared pool of majors and minors*

\$1.5 million

Apply for a wide selection of merit and equity scholarships worth \$1.5 million annually



Secure your place at the university early under our new Creative Arts Special Admission Scheme

Music courses

B Music ϕ

Selection Rank: 70* + audition
Entry: Feb
Duration (full time): 4 years
Assumed knowledge: Music 1

Programs, majors and minors

You will choose from the following programs: Contemporary Music Practice; Composition for Creative Industries; Digital Music and Media; or a major in Musicology. You may also take an optional major, minor or electives from the shared pool and the Open Learning Environment.

Career possibilities

These depend on the areas of study and could include: arts administrator, music producer, singer/songwriter, contemporary musician, festival or venue manager, composer, music arranger, sound installation designer, interactive music designer, music journalist, music researcher, event producer.

B Music (Composition) ϕ

B Music/B Advanced Studies (Composition)

Selection Rank: 70* + audition
Entry: Feb
Duration (full time): 4 years (single)/5 years (combined)
Assumed knowledge: Music 2

Programs, majors and minors

You will have the opportunity to study in both traditional and electroacoustic composition areas, including computer music, digital music and sound art. Core studies are taken in compositional techniques and analysis, instrumentation and orchestration, music theory and aural training, and historical and cultural studies. In the combined B Music/B Advanced Studies (Composition) you will complete a major from the shared pool and

units from the Open Learning Environment. In the fifth year, you will undertake advanced coursework and a substantial real-world industry, community, entrepreneurship project, or an honours project.

Career possibilities

Composer, music arranger, concert entrepreneur, artistic curator, music researcher.

B Music (Music Education)

Selection Rank: 70* + other admission criteria
Entry: Feb/Jul
Duration (full time): 4 years
Assumed knowledge: Music 2
Prerequisites: NSW Education Standards Authority (NESA) requirement of Band 5 in three HSC subjects, one of which needs to be English (Standard or Advanced or ESL/EALD) or equivalent. See page 50.

Programs, majors and minors

You will undertake core Music Education studies, plus a principal study in either a classical instrument, voice, jazz studies, drum set, historical performance, non-Western instruments, composition, contemporary music practice, or musicology. Studies are also undertaken in analysis, history and cultural studies, and music skills (aural perception, harmony and analysis).

Career possibilities

Classroom music teacher, private music teacher.

Professional recognition

The NSW Education Standards Authority, NSW Department of Education and Communities, Association of Independent Schools of NSW, Catholic Education Office.

B Music (Performance) ϕ

B Music/B Advanced Studies (Performance)

Selection Rank: 70* + audition
Entry: Feb/Jul
Duration (full time): 4 years (single)/5 years (combined)
Assumed knowledge: Music 2

Programs, majors and minors

You will take an instrumental or vocal principal study from either classical music, jazz, historical performance, music theatre, non-Western Music or drum set. In addition, you will complete core studies in music skills and analysis, history, culture, performance, ensemble studies and pedagogy. In the combined B Music/B Advanced Studies (Performance), you will complete a major from the shared pool and units from the

Open Learning Environment. In the fifth year, you will undertake advanced coursework and a substantial real-world industry, community, entrepreneurship project, or an honours project.

Career possibilities

Concert soloist, musician, private music teacher, orchestral musician, chamber musician, jazz musician, conductor, concert entrepreneur, arts manager.

Additional admission criteria

For admission to the Sydney Conservatorium of Music, you will also be assessed based on an audition (or portfolio) and interview. An audition fee applies.

For more on requirements and deadlines, visit sydney.edu.au/music/audition

For the Bachelor of Music (Music Education), also see requirements under Education (see page 50).

ϕ Creative Arts Special Admission Scheme (CASAS)
Domestic applicants undertaking a current recognised high school (Year 12) qualification and applying via UAC, may be eligible for an early offer of admission prior to the release of ATARs or equivalent

score under the University's Creative Arts Special Admission Scheme. Eligible applicants will be assessed based on a combination of academic performance and audition/portfolio requirements.

For details, visit sydney.edu.au/music/audition

*Selection ranks with an asterisk are indicative and not Guaranteed Entry.



Dalyell Scholars
see page 11

Assumed knowledge and prerequisites
see page 25

Mathematics prerequisite
see page 72

For important information
see page 72

* Available in the Bachelor of Music, and combined Bachelor of Advanced Studies degrees only

Science




Studying science opens up a world of opportunities. Whether you dream of joining the forefront of scientific research, learning how to analyse and think critically, or want to make the planet a better place, studying science will give you highly sought-after skills for a huge range of careers.

Learn from world-leading scientists

With over 40 science majors to choose from, you can build a degree around your interests. You'll be taught by dedicated scientific thinkers, including members of the Australian Academy of Science, Australian Research Council Fellows and other prestigious prize winners. You will study in world-class facilities, including the multimillion-dollar Life, Earth and Environmental Sciences (LEES) Building, the Sydney Nanoscience Hub and the Charles Perkins Centre.

1st in Australia and
16th in the world for
veterinary science*

 Learn from experts at the University of Sydney Nano Institute, the Charles Perkins Centre and Taronga Conservation Society Australia

 Choose from flexible science degrees or professionally accredited courses, including psychology and veterinary medicine



“I’ve had opportunities to volunteer with multiple structural biology research groups on structure-based drug design, including creating antibiotics that target FtsY – a bacterial protein. These experiences have been priceless and enhance what I learn in the classroom.”

Belinda Zhang
Bachelor of Science and Bachelor of Advanced Studies (Advanced)

* QS World University Rankings by Subject 2021

Science courses

B Liberal Arts and Science

Selection Rank: 70 Guaranteed
Entry: Feb/Jul
Duration (full time): 3 years
Dalyell by invitation
Assumed knowledge: Depends on the major or units of study chosen.

Programs, majors and minors

You will complete one major in either science or arts and a sequence in the other. A 'sequence' is similar to the structure of a minor and includes six units of study.

Arts and social sciences majors include:

American Studies; Ancient Greek; Ancient History; Anthropology; Arabic Language and Cultures; Archaeology; Art History; Asian Studies; Biblical Studies and Classical Hebrew; Chinese Studies; Criminology; Cultural Studies; Digital Cultures; Economics; Economic Policy; Econometrics; English; Environmental, Agricultural and Resource Economics; European

Studies; Film Studies; French and Francophone Studies; Gender Studies; Germanic Studies; Hebrew (Modern); History; Indigenous Studies; Indonesian Studies; International Comparative Literary Studies; International Relations; Italian Studies; Japanese Studies; Jewish Civilisation, Thought and Culture; Korean Studies; Latin; Linguistics; Modern Greek Studies; Music; Philosophy; Political Economy; Politics; Socio-legal Studies; Sociology; Spanish and Latin American Studies; Studies in Religion; Theatre and Performance Studies.

Science majors include: Anatomy and Histology; Animal Health, Disease and Welfare; Animal Production; Applied Medical Science; Biochemistry and Molecular Biology; Biology; Cell and Developmental Biology; Chemistry; Computer Science; Data Science; Ecology and Evolutionary Biology; Environmental Studies; Financial Mathematics and Statistics; Food Science; Genetics and Genomics; Geography; Geology and Geophysics; Health; History and Philosophy of Science; Immunology

and Pathology; Infectious Diseases; Marine Science; Mathematics; Medicinal Chemistry; Microbiology; Nutrition Science; Pharmacology; Physics; Physiology; Plant Production; Psychological Science; Psychology (program); Software Development; Soil Science and Hydrology; Statistics.

Career possibilities

Anthropologist, archaeologist, archivist, art or science historian, business administrator or manager, biosecurity researcher, documentary maker, editor or publisher, ecologist, environmental policymaker, food chemistry analyst, foreign affairs and trade officer, geologist, government policy officer, historian, heritage specialist, human resources manager, hydrologist, information specialist, journalist, language specialist, media and communications adviser, museum or gallery curator, plant geneticist, researcher, scientist, sociologist.

B Psychology

Selection Rank: 85 Guaranteed
Entry: Feb
Duration (full time): 3 years
Dalyell by invitation
Mathematics prerequisite[‡]: Yes
Assumed knowledge: Mathematics Advanced or higher, other assumed knowledge depends on minors or units of study chosen.

Programs, majors and minors

You will complete a program in Psychology, a minor from the shared pool and electives from either B Science, the shared pool or the Open Learning Environment.

Career possibilities

Clinical psychologist (with additional study), neuroscientist, organisational psychologist, market researcher, advertising executive,

social psychology researcher, learning and attention researcher.

Professional recognition

At the time of print, accreditation as a Level 1 (Foundational Competencies) undergraduate psychology sequence is pending with the Australian Psychology Accreditation Council (APAC). For updates, visit the course page on sydney.edu.au/courses.

B Psychology Honours

Selection Rank: 96 Guaranteed
Entry: Feb
Duration (full time): 4 years
Dalyell by invitation
Mathematics prerequisite[‡]: Yes
Assumed knowledge: Mathematics Advanced or higher, other assumed knowledge depends on minors or units of study chosen.

Programs, majors and minors

You will complete a program in Psychology, a minor from the shared pool and electives from either B Science, the shared pool or the Open Learning Environment. You will then undertake honours units in psychology.

Career possibilities

Clinical psychologist (with additional study), neuroscientist, organisational psychologist, market researcher, advertising executive,

social psychology researcher, learning and attention researcher.

Professional recognition

Completion of the accredited Level 1 and 2 programs (Pre-Professional Competencies) with the Australian Psychologists Accreditation Council (APAC), that will allow provisional registration with the Australian Psychological Society.

B Science

B Science/B Advanced Studies

Selection Rank: 80 Guaranteed
Entry: Feb/Jul
Duration (full time): 3 years (single)/4 year (combined)
Dalyell by invitation
Mathematics prerequisite[‡]: Yes
Assumed knowledge: Mathematics Advanced and/or higher (depending on units of study selected), other assumed knowledge depends on majors or units of study chosen.

Programs, majors and minors

You will choose Open Learning Environment units, one major from the options below and either a second major (mandatory for the B Science/B Advanced Studies) or a minor from these options, or from the shared pool: Agroecosystems (program); Anatomy and Histology; Animal Health, Disease and Welfare; Animal Production; Applied

Medical Science; Astrophysics (program); Biochemistry and Molecular Biology; Biology; Cell and Developmental Biology; Chemistry; Computer Science; Data Science; Ecology and Evolutionary Biology; Environmental Science (program); Environmental Studies; Financial Mathematics and Statistics; Food Science; Genetics and Genomics; Geography; Geology and Geophysics; History and Philosophy of Science; Immunology (minor); Immunology and Pathology; Infectious Diseases; Life Sciences (program); Marine Science; Mathematical Sciences (program – available for ATAR 98+ or equivalent); Mathematics; Medicinal Chemistry; Microbiology; Neuroscience (program); Nutrition Science; Pathology (minor); Pharmacology; Physics; Physiology; Plant Production; Plant Science (minor only); Psychological Science; Psychology (program); Software Development; Soil Science and Hydrology; Statistics; Virology (minor only). In the final year of the combined

degree, you will undertake advanced coursework units and a substantial real-world industry, community, entrepreneurship or research project, or an honours project.

Career possibilities

Agricultural scientist, astronomer, biosecurity researcher, conservation biologist, ecologist, environmental policymaker, food chemistry analyst, hydrologist, mathematician, medical scientist, nanoscientist, nutritionist (after further study), psychologist (after further study), plant geneticist, soil scientist.

Combine B Science with

B Advanced Computing, B Engineering Honours, B Laws, D Dental Medicine, D Medicine, M Mathematical Sciences, M Nursing, M Nutrition and Dietetics.



Dalyell Scholars
see page 11

Assumed knowledge and prerequisites
see page 25

‡ Mathematics prerequisite
see page 72

For important information
see page 72

Science courses

B Science/B Advanced Studies (Dalyell Scholars including Mathematical Sciences)		
Selection Rank: 98 Guaranteed Entry: Feb/Jul Duration (full time): 4 years Dalyell by application Mathematics prerequisite^a: Yes Assumed knowledge: For Dalyell Scholars: Mathematics Advanced and/or higher (depending on units of study selected), other assumed knowledge depends on majors or units of study chosen. For Mathematical Sciences: Mathematics Extension 2, other assumed knowledge depends on majors or units of study chosen.	Programs, majors and minors Refer to B Science/B Advanced Studies. A second major must also be taken from these options or from the shared pool. As a Dalyell Scholar, you will undertake 12 credit points of distinctive Dalyell units complemented by a suite of additional enrichment opportunities including mentoring, professional skill development, co-curricular activities, and the option for a global mobility experience. You'll also complete units from the Open Learning Environment. In the final year of the combined degree, you will undertake advanced coursework units and a	substantial real-world industry, community, entrepreneurship or research project, or an honours project. Career possibilities Agricultural scientist, astronomer, biosecurity researcher, data analyst, ecologist, environmental policymaker, food chemistry analyst, hydrologist, investment banker, journalist, mathematician, medical scientist, nanoscientist, nutritionist (after further study), psychologist (after further study), plant geneticist, soil scientist.

B Science (Health) B Science/B Advanced Studies (Health)		
Selection Rank: 80 Guaranteed Entry: Feb/Jul Duration (full time): 3 years (single)/4 years (combined) Dalyell by invitation Mathematics prerequisite^a: Yes Assumed knowledge: Mathematics Advanced and/or higher; other assumed knowledge depends on majors or units of study chosen.	Programs, majors and minors You are required to complete the Health major in this stream. You will complete a second major (mandatory for B Science/B Advanced Studies (Health) or minor from those available in the B Science, including Human Movement, or from the shared pool. In the final year of the combined degree, you will undertake advanced coursework units and a substantial real-world industry, community, entrepreneurship or research project, or an honours project.	Career possibilities Health promotion, policymaking, healthcare administration, project and case management, insurance, business development, marketing and public relations, research assistant, sports and conditioning consultant. Combine B Science (Health) with B Advanced Computing, B Engineering Honours (Biomedical), M Nursing.

B Science (Medical Science) B Science/B Advanced Studies (Medical Science)		
Selection Rank: 90 Guaranteed Entry: Feb/Jul Duration (full time): 3 years (single)/4 years (combined) Dalyell by invitation Mathematics prerequisite^a: Yes Assumed knowledge: Mathematics Advanced and/or higher, Chemistry and either Physics or Biology; other assumed knowledge depends on majors or units of study chosen.	Programs, majors and minors This stream requires completion of a program in Medical Science, including a Medical Science major. You will complete a second major (mandatory for B Science/B Advanced Studies (Medical Science) or minor from those available in the B Science or from the shared pool. You'll also complete units from the Open Learning Environment. In the final year of the combined degree, you will undertake advanced coursework units and a substantial real-world industry, community, entrepreneurship or research project, or an honours project.	Career possibilities Medical researcher, pathologist, doctor (with further study), dentist (with further study), histologist, physiologist, microbiologist, biochemist, biomedical device designer, anatomy researcher, infectious diseases researcher, geneticist. Combine B Science (Medical Science) with B Advanced Computing, B Engineering Honours (Biomedical), D Medicine.

B Science/B Advanced Studies (Advanced)		
Selection Rank: 95 Guaranteed Entry: Feb/Jul Duration (full time): 4 years Dalyell by invitation Mathematics prerequisite^a: Yes Assumed knowledge: Mathematics Advanced and/or higher (depending on units of study selected), other assumed knowledge depends on majors or units of study chosen.	Biochemistry and Molecular Biology; Biology; Cell and Developmental Biology; Chemistry; Computer Science; Data Science; Ecology and Evolutionary Biology; Environmental Studies; Financial Mathematics and Statistics; Genetics and Genomics; Geography; Geology and Geophysics; Immunology and Pathology; Infectious Diseases; Marine Science; Mathematics; Medicinal Chemistry; Microbiology; Neuroscience; Pharmacology; Physics; Physiology; Psychological Science; Statistics. A second major must also be taken from these options or from the shared pool. You will also complete Open Learning Environment units. In the final year of the	combined degree, you will undertake advanced coursework units and a substantial real-world industry, community, entrepreneurship or research project, or an honours project. Career possibilities Agricultural scientist, astronomer, biosecurity researcher, conservation biologist, ecologist, environmental policymaker, food chemistry analyst, hydrologist, investment banker, journalist, mathematician, medical scientist, nanoscientist, nutritionist (after further study), psychologist (after further study), plant geneticist, soil scientist, veterinarian (after further study).

B Science/B Advanced Studies (Agriculture)		
Selection Rank: 75 Guaranteed Entry: Feb/Jul Duration (full time): 4 years Dalyell by invitation Mathematics prerequisite^a: Yes Assumed knowledge: Mathematics Advanced and/or higher and Chemistry; other assumed knowledge depends on majors or units of study chosen.	Programs, majors and minors This stream requires completion of a program in Agriculture, including a major in Animal Production, Plant Production or Soil Science and Hydrology. You will also complete a second major from those available in the B Science or from the shared pool and Open Learning Environment units. In the final year of the combined degree, in addition to a professional placement, you will undertake advanced	coursework units and a real-world industry, community, entrepreneurship or research project, or an honours project. Career possibilities Agronomist, sustainable agriculture researcher, plant geneticist, animal reproduction specialist, environmental microbiologist, agricultural journalist, commodities trader, precision soil scientist.

B Science/B Advanced Studies (Animal and Veterinary Bioscience)		
Selection Rank: 80 Guaranteed Entry: Feb/Jul Duration (full time): 4 years Dalyell by invitation Mathematics prerequisite^a: Yes Assumed knowledge: Mathematics Advanced or higher and Chemistry; other assumed knowledge depends on majors or units of study chosen.	Programs, majors and minors This stream requires completion of a program in Animal and Veterinary Bioscience, including an Animal and Veterinary Bioscience major. You will complete a second major from those available in the B Science or from the shared pool. You'll also complete units from the Open Learning Environment. In the final year of the combined degree in addition to a professional placement, you will undertake advanced coursework units and a real-world industry,	community, entrepreneurship or research project, or an honours project. Career possibilities Agricultural scientist, animal health and welfare professional, animal ethicist, animal nutritionist, biosecurity researcher, ecologist, environmental policymaker, geneticist, wildlife population manager, veterinarian (with further study in the Doctor of Veterinary Medicine).

B Science/B Advanced Studies (Food and Agribusiness)		
Selection Rank: 80 Guaranteed Entry: Feb/Jul Duration (full time): 4 years Dalyell by invitation Mathematics prerequisite^a: Yes Assumed knowledge: Mathematics Advanced or higher and Chemistry; other assumed knowledge depends on majors or units of study chosen.	in Food and Agribusiness, including a major in Food Science and a second major from the list below. You'll also complete units from the Open Learning Environment. Majors include: Accounting; Environmental, Agricultural and Resource Economics; Banking; Business Analytics; Business Information Systems; Business Law; Econometrics; Economic Policy; Economics; Finance; Financial Economics; Industrial Relations and Human Resource Management; International Business; Management and Leadership; Marketing. In the final year of the combined degree in addition	to a professional placement, you will undertake advanced coursework units and a real-world industry, community, entrepreneurship or research project, or an honours project. Career possibilities Agribusiness consultant, food chemist, food safety specialist, food technologist, laboratory technician, market researcher, product/process developer, quality assurance manager, procurement officer, regulatory affairs officer, research scientist, sales and marketing, supply chain and logistics manager.

B Science/B Advanced Studies (Taronga Wildlife Conservation)		
Selection Rank: 85 Guaranteed Entry: Feb/Jul Duration (full time): 4 years Dalyell by invitation Mathematics prerequisite^a: Yes Assumed knowledge: Mathematics Advanced or higher and Biology; other assumed knowledge depends on majors or units of study chosen.	Conservation which includes a Wildlife Conservation major that combines biology and conservation management. You will complete a second major from the B Science or the shared pool. The Taronga Wildlife Conservation stream also includes additional prescribed units of study in mathematics and animal sciences. It will provide extensive training in wildlife conservation by incorporating the study of biodiversity and evolution, animal science, and animal behaviour and management. You'll also complete units from the Open Learning Environment. In the final year of the	combined degree in addition to field work, you will undertake advanced coursework projects, or an honours project. Career possibilities Ecologist, animal reproduction specialist, conservationist, environmental policymaker, teacher (with further training), veterinarian (with further study), in fields including wildlife conservation, sustainability, environmental consulting, animal health, government and policy, NGOs, business and analytics.

B Science/M Mathematical Sciences		
Selection Rank: 98 Guaranteed Entry: Feb/Jul Duration (full time): 4.5 years Dalyell by invitation Mathematics prerequisite^a: Yes Assumed knowledge: Mathematics Extension 2, other assumed knowledge depends on major or units of study chosen for the B Science. Students with top band Extension 1 are also encouraged to apply.	Programs, majors and minors In the B Science, you will complete a major at the advanced level in either Mathematics, Statistics, Financial Mathematics and Statistics, or Data Science. The second major or minor can be chosen from those available in the B Science or from the shared pool. You will also complete units from the Open Learning Environment. In the M Mathematical Sciences, you will complete advanced units with choices from pure mathematics, applied mathematics,	financial mathematics, statistics and data science. Career possibilities Business analyst, bioinformatician, data scientist, economic modeller, energy forecaster, game designer, health planner, quantitative analyst in banking, statistician, market analyst, meteorologist, financial analyst, teacher, researcher, web analyst.

B Veterinary Biology/D Veterinary Medicine		
Selection Rank: 98* + statement and test Entry: Feb Duration (full time): 6 years Mathematics prerequisite^a: Yes Assumed knowledge: Mathematics Advanced or higher, Chemistry and Physics.	veterinary medicine, veterinary public health and veterinary surgery. Career possibilities Veterinarian, veterinary geneticist, small animal veterinarian, livestock veterinarian, equine veterinarian, biosecurity researcher, veterinary cardiologist, public health policymaker. Professional recognition Graduates are eligible for registration with the Veterinary Practitioner Board in each state and territory in Australia. The Bachelor of Veterinary Biology/Doctor of Veterinary Medicine is also recognised internationally.	Additional admission criteria Applicants to the Bachelor of Veterinary Biology/Doctor of Veterinary Medicine are required to submit a Commitment to Veterinary Science form and complete a situational judgement test, in addition to the application for admission. For details, visit the relevant course page: sydney.edu.au/courses There are separate requirements for progression to the Doctor of Veterinary Medicine component of the combined degree. For details, visit sydney.edu.au/handbooks/science

	Dalyell Scholars see page 11	Assumed knowledge and prerequisites see page 25	† Mathematics prerequisite see page 72	For important information see page 72
---	--	---	--	---

* Selection ranks with an asterisk are indicative and not Guaranteed Entry.

Table notes

The admission criteria published in the course tables and 2023 Admissions Guide are a guide and will not necessarily result in an offer of a place for all courses. All scores listed are correct at the time of print and may be subject to change.

Selection ranks and Guaranteed Entry

For all eligible courses, we list a selection rank (ATAR + adjustment factors) with Guaranteed Entry for admission in the specified year for most courses. Admission to all courses is subject to meeting the selection rank plus other essential admission criteria (e.g. prerequisites) and availability of places. Selection ranks marked with an asterisk (*) are indicative and not Guaranteed Entry as these courses have additional admission criteria and/or may have a limited number of places.

Adjustment factors are used to increase your selection rank based on factors such as your performance in HSC subjects, the location of your school, or your eligibility for Educational Access Schemes. Selection rank adjustments don't change your ATAR, they change your selection rank for a particular course at a particular institution. If you are not eligible for adjustment factors, your selection rank is your ATAR.

For a full list of secondary education (Year 12 or high school) qualifications accepted by the University, visit:

– sydney.edu.au/study/secondary-qualifications

Programs, majors, minors or specialisations

The programs, majors, minors or specialisations listed are indicative and are subject to change. Unless specified as a major or a minor only, majors are also available as minors. For the latest information, visit

– sydney.edu.au/handbooks

Assumed knowledge and prerequisites

The assumed knowledge and prerequisites listed in our course tables refer to subjects in the NSW Higher School Certificate (HSC) curriculum. For example, Mathematics Advanced refers to the two unit HSC subject or an equivalent subject for other qualifications. Refer to the HSC syllabus to understand the required subjects and standards.

– www.educationstandards.nsw.edu.au/wps/portal/nesa/11-12/Understanding-the-curriculum/syllabuses-a-z

Recommended studies

Some courses may also have recommended studies. For details, check the relevant course at

– sydney.edu.au/courses

Key to the tables

▲ Additional admission criteria

Combination of selection rank (or equivalent score) plus additional admission criteria (eg, portfolio, audition, interview). Check the details for your specific course in the area of study section of this guide or at

– sydney.edu.au/courses

na

Not applicable as an admission score cannot be applied.

‡ Mathematics course prerequisites

Mathematics prerequisites apply to domestic students applying for admission to relevant courses (see our website for a full list).

Aboriginal and Torres Strait Islander applicants applying through the Gadigal Program who do not meet the prerequisites may be admitted if they submit sufficient proof of mathematics ability as assessed by the University.

Visit our website to find out more about the mathematics

prerequisites, including equivalent requirements for other qualifications:

– sydney.edu.au/study/math

^Education degrees with NESA prerequisites

NSW Education Standards Authority (NESA) has separate requirements for education degrees. See pages 49, 50 and 67 for details or visit the relevant course at:

– sydney.edu.au/courses

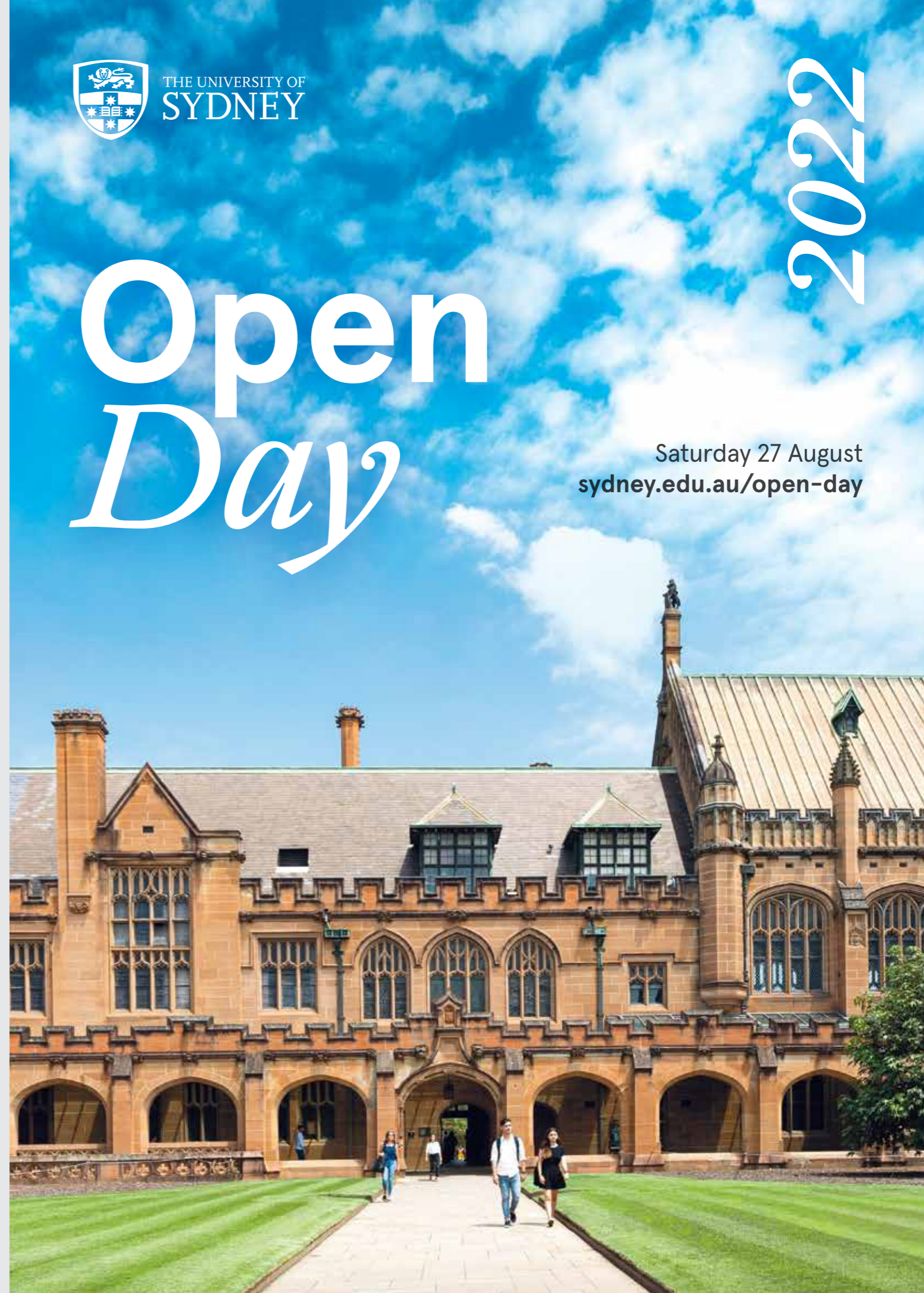


THE UNIVERSITY OF
SYDNEY

Open Day

Saturday 27 August
sydney.edu.au/open-day

2022





*Your journey to
leadership* is as
unique as you are.

Create your own path, starting now.
At the University of Sydney, you can
customise your course and get involved
in extracurricular activities to shape
life at university and beyond.

Explore world-class knowledge, ideas and
innovation to create a future with impact.

To learn more, come and see us
at **Open Day**, call our helpline
or visit our website.

sydney.edu.au/ask
1800 SYD UNI (1800 793 864)

Explore our wide range of courses and
find out about admission criteria at
sydney.edu.au/courses

Share the excitement

#USYD22

@Sydney_Uni



CRICOS 00026A

Produced by Marketing and
Communications, the University
of Sydney, March 2022.
The University reserves the
right to make alterations to
any information contained within
this publication without notice.

22/8752.03



PEFC Certified

This product is from
sustainably managed forest
and controlled sources.
Recognised in Australia by
Responsible Wood.

www.pefc.org.au