

文件下载自万友教育网站

版权归学校所有

www.oneuedu.com

万友优势 ADVANTAGE



客户信息私密性

录入系统后自动设置权限，除专属的案件专员其他内部人员及外部人员不可见



精英团队

文案专员为每位学生一对一定制专属方案，移民律师外部协助。团队为学生带来高质量服务



学生案件更新通知

当文案专员每完成一步，会更新在万友系统中，客户会以邮件的形式收到步骤更新通知，查看自己案件的最新进程



全程服务透明

无押金等不必要条款，客户案件信息透明，收费项会在案件开始前与客户协商一致，案件开始后无特殊意外情况，不会产生收费项目

提供服务 PROVIDE SERVICES

学校
查询

课程
查询

学生
签证

留学
准备

出发
准备

绿卡
资讯



详细流程请扫码
添加客服为您解答



2023 Student Guide

YOUR ON-CAMPUS PATHWAY TO
MURDOCH UNIVERSITY



Welcome to **Murdoch University**

The Murdoch Difference

**Ask anyone who's studied
here: there's something
special about Murdoch**

Since we were founded in 1973, we've been committed to providing students with the kind of education which helps them find new ways to push past the status quo.

Murdoch University is a place where lecturers know you by name, and down-to-earth students wave to you across the lawn of Bush Court. We are honoured to welcome staff and students who come from all walks of life.

Whether you want to change the whole world, some of the world, or just your world, our extensive range of courses and hands-on learning facilities will equip you with the skills you need. We will take you beyond the classroom and out into the field where you can think for yourself and see the world in real time.

Welcome to our vibrant community.



Five-star rating for Teaching, Employability, Research, Internationalisation, Innovation and Inclusiveness.

QS STARS ASSESSMENT 2022



More than \$2.5 million has been offered in scholarships every year.



Rated five-stars for teaching quality and student to teacher ratio.

THE GOOD UNIVERSITIES GUIDE 2022



Global university with five campuses spanning across three countries.

Why Murdoch?



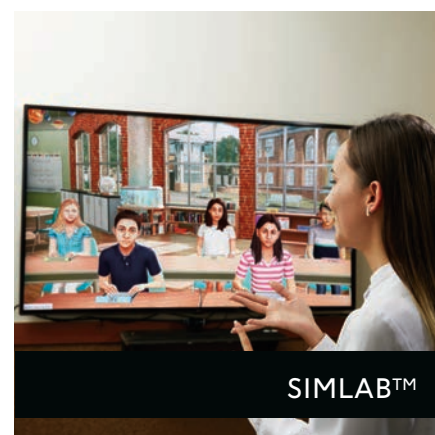
IT INNOVATION HUB



LAW MOOT COURT



CHIROPRACTIC CLINIC



SIMLAB™

Nursing Simulation Suites

From your first week as a Murdoch Nursing student you will have the opportunity to experience our state-of-the-art Nursing Simulation Suites at both our Mandurah and Perth campuses. These clinical suites house fully equipped clinical teaching wards, treatment areas and simulation suites. You'll practice your skills on lifelike, high-tech mannequins with heart, lung and digestive sounds, and other realistic features.

Chiropractic Clinic

As a Chiropractic student, you'll learn to treat patients in our on-campus chiropractic clinic, which houses a rehabilitation centre, physiological therapeutics facility, consulting rooms and a digital radiographic suite.

Engineering Pilot Plant

Our nationally renowned Bayer Pilot Plant is where our Engineering technology students learn real-world skills. This engineer's playground is one of only a few in Australia and the only one of its kind in Western Australia.

The Animal Hospital and Working Farms

Our Perth campus is home to a working farm, a veterinary clinic, a fully equipped Veterinary Hospital complete with cancer and dermatology clinics, a Pet Emergency Centre and our Equine Centre with equine operating theatres.

IT Innovation Hub

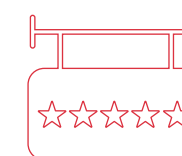
Fitted out with the latest mixed and augmented reality equipment, operational data centre and high-performance computing capabilities, our IT Innovation Hub is a cutting-edge teaching, learning and research facility, specially designed for IT students.

Law Moot Court

In our Herbert Smith Freehills Moot Court, you will have the opportunity to try hypothetical cases in a courtroom environment, develop advocacy and mooting skills, and compete against other law schools from around the world.

New world-class facility coming in 2023

You'll be the first to learn and collaborate with your classmates in our new world-leading, technology-enriched environment opening in Semester 1, 2023. In staying true to our commitment to the environment, our new building, Boola Katitjin has a sustainable 6-star rating, is the largest mass engineered timber project in Western Australia and will be the largest tertiary building of its kind in Australasia.



We're rated five-stars
for our Facilities
QS STARS ASSESSMENT 2022

SimLab™

Murdoch is proud to be the first university in Australia to offer SimLab™ technology, an immersive platform that gives students the opportunity to experience, practice and improve their teaching techniques in a safe learning environment.

Sports Science Facility

Our sports science facility houses a dedicated exercise physiology laboratory, complete with a climate and altitude chamber, plus a performance laboratory with motion capture system and running track. It also includes a rehabilitation, strength and conditioning laboratory, complete with fully equipped gym with Olympic lifting facilities. It is also home to a Mind and Body Lab with a fitness testing area and a DEXA machine.

Murdoch Psychology Clinic

If your goal is to become a registered psychologist, you'll need to study an undergraduate degree in psychology and then continue your studies at postgraduate level. At postgraduate level, you may have the opportunity to work with real clients at our on-campus psychology clinic.

Media Arts Centre

As a Creative Arts or Communications student, you'll get to experience our sound stage, television and radio studios, digital post-production facilities, sound-mixing studios, digital and creation workplaces, and professional video and editing suites.

Nexus Theatre

Equipped with world-class facilities, Nexus Theatre has been providing students, staff and the Murdoch community, for the past 27 years, with a modern teaching and performance space to enjoy.

Launchpad

Based in the library, Launchpad is a place for students across all disciplines to develop skills, solve challenges with industry, explore entrepreneurship and start businesses. Take advantage of our Launchpad Academy programs, student led events, future skills workshops, 3D printers and collaboration spaces, as well as meet with experts including Entrepreneur-in-residence Jeremy Chetty and program mentors from industry and the start-up community.



Number 1 in WA for
postgraduate educational
experience, student support,
teaching quality and skills
development

THE GOOD UNIVERSITIES GUIDE 2022

Introducing Murdoch College

Your new on-campus pathway to Murdoch University

Murdoch College supports students from around the world take their first steps towards tertiary study at Murdoch University. Our dedicated team is here to help you throughout your studies, to ensure a learning experience that will take you on to success at the University and beyond.

We place a special focus on student care, flexibility and safety. As the only pathway college on university grounds, at Murdoch College you will be able to experience campus life while accessing world-class facilities.

Your pathway options

Study on Campus

Experience university life right from the start with all classes held at Murdoch University's Perth campus. Murdoch College students are part of the university community from day one and have access to a full range of facilities and services. While you study connect with university students to gain a better understanding of what studying at university is really like.

Direct Entry Pathways

It's never been easier to get into the degree you want. Murdoch College offers you a pathway into a range of Murdoch University degree programs. Graduate from our Foundation Studies program or Murdoch University Preparation Course and move straight into the first year of your chosen degree.

University Syllabus

We have worked with Murdoch University academic staff to develop a teaching program based around the university syllabus, so you get the advantage of being introduced to your degree content early on, allowing for a smooth transition into Murdoch University.

Preparation Oriented Learning

At Murdoch College we take a complete approach to university preparation. We don't just consider what you're learning, we also help you develop the skills you need to be successful in your studies.

You will experience a university-style course structure of lectures, tutorials and seminars. Just like university students, you'll be assessed through exams, coursework, assignments and group tasks. You will develop study techniques over the duration of your time at Murdoch College, so by the time you're at university, you will have the skills to be proactive and independent in your study.

Academic Support

At Murdoch College we want you to get the most out of your studies so you can go on to the degree or career that's right for you. To help you do your best, we will provide you with ongoing support in the following areas:

- Study pathways course and unit selection
- Study skills and independent learning
- Examination techniques and personalised study plans
- Career choices and academic pathways

Personal Support

Being a student can be difficult sometimes, particularly when you are far away from home. If you are having a hard time missing friends and family or you're struggling with your workload, the Murdoch College Student Support team offers caring and confidential assistance with any situation that is impacting your studies.

Individual Attention

Our experienced and qualified academics care about the personal growth and success of every student. Benefit from our small class sizes where you will receive individual attention and focused support as you prepare for university life.

Packaged Enrolments

Murdoch College and Murdoch University offer packaged enrolments for international students. This means that you initially apply to both Murdoch College and Murdoch University at the same time. When you successfully graduate from Murdoch College, you are guaranteed direct entry into Murdoch University without having to reapply.*

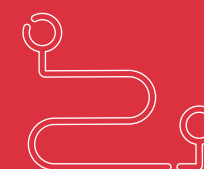
*Subject to meeting university progression requirements.



Why Study with us?



Study on
Campus



Guaranteed
pathway*



Preparation for
University



Individual
Attention
and Support

Experience Perth

Perth is a youthful and diverse city with vibrant nightlife, spectacular outdoor spaces and a unique urban charm.

The capital of Western Australia, Perth is a prosperous and thriving city based on the shores of the Swan River. Making the most of the warm, dry summers and cool, wet winters, Perth residents have everything they need with a large shopping district offering a cosmopolitan mix of cafes, restaurants, pubs and thriving nightlife.

The sunniest capital city in Australia, Perth is a cultural hub of activity, social events and weekend getaways. Known for the friendly locals that call Perth home, Perth provides a welcoming and safe environment for international students and their families.

Murdoch's Perth campus is located approximately 15 minutes from both the historic port-city of Fremantle and bustling City of Perth, making it easy for students to spend their free time exploring and participating in a range of activities and events.



The Bucket List

☐ Elizabeth Quay

An exciting new waterfront precinct on the banks of the Swan River, Elizabeth Quay is a vibrant destination with activities for people of all ages. It features the BHP Water Park, public artwork, a range of world-class bars and restaurants.

☐ Cottesloe Beach

Boasting over a kilometre of pristine white sand and turquoise water, Cottesloe Beach is one of Perth's most popular beach destinations.

☐ Fremantle

The historic port-city of Fremantle is renowned for its laid-back attitude, art and culture, vibrant cappuccino strip and internationally acclaimed restaurants.

☐ Kings Park

At the foot of the CBD, Kings Park is one of the world's largest and most beautiful inner city parks that boasts rich Aboriginal and European history with sweeping views of the Swan River.

☐ Rottnest Island

Just 20km off the coast of Perth, Rottnest Island is the perfect destination for a day away from study or a longer island vacation.

☐ Northbridge

A buzzing hub of hip bars, fantastic restaurants, quirky boutiques and exquisite art, Northbridge is the place where Perth comes alive. With the Perth Cultural Centre at its heart, there is always something to do in Northbridge.



Perth: The gateway to the world

Not only does Perth share one of the most populated time zones in the world, but it offers direct flights to Europe, and is connected to Asia and Europe by a number of airlines.

- ✈ Beijing (12 hours)
- ✈ London (17 hours)
- ✈ Sydney (4 hours)
- ✈ Melbourne (3.5 hours)
- ✈ Bali (3.5 hours)
- ✈ Bangkok (7 hours)
- ✈ Singapore (5 hours)
- ✈ Jakarta (4.5 hours)
- ✈ Kuala Lumpur (5.5 hours)
- ✈ Hong Kong (8 hours)
- ✈ Dubai (11 hours)



Ranked in the top 35
for most desirable city
to live for students

QS, BEST STUDENT CITIES 2022



The sunniest
city in Australia

BUREAU OF METEOROLOGY



31°C

Average summer
temperature

18°C

Average winter
temperature

Campus Life

Enjoy a range of Murdoch University world-class facilities, services, clubs and associations from day one of your program with us.

Murdoch Student Guild

Run by students, for students, the Murdoch Student Guild runs social events and a heap of extracurricular activities.

Esports Gaming Hub

Visit our new Esports Gaming Hub equipped with 12 state-of-the-art Alienware Gaming computers.

Student Hub

The Student Hub at our Perth campus is a flexible space where you can indulge in yummy food, socialise and co-work.

Keep active

Join a social sports team or the on-campus fitness centre with discounted memberships for students.

Campus events

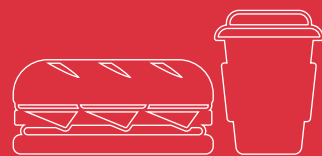
Experience campus events like Festival Day, Stress Less Week, weekly Marketdaze stalls and themed tavern events.

Join our clubs

Murdoch Guild clubs are the heart of campus life and culture. They bring students together outside the academic setting and provide unforgettable experiences, events and friendships. Boasting over 110 affiliated clubs, we have something for everyone.



10 food outlets



IGA X-Press store



6 coffee shops



The Tavern



Foundation Studies



Quick Facts

Duration:	2 trimesters (15 weeks per trimester)
Intake Dates:	26 June 2023 and 23 Oct 2023
English Entry Requirements:	IELTS 5.5 overall (no band less than 5.0)
Academic Entry Requirements:	Completion of Australian Year 11 or equivalent (see Academic Entry Requirements page 18)
Study load:	8 hours per core unit per week, plus 6 hours per elective unit per week
Program Fee:	\$24,840
CRICOS Course Code:	093279K

Foundation Studies prepares you for successful transition to degree-level study, providing a pathway to the first year of study of a bachelor degree at Murdoch University. This program has been specifically designed for international students.

Why study Foundation Studies with us?

Pathway to any Degree

This course is suited to you if:

- you need an entrance qualification for Murdoch University
- you want to accelerate your university preparation after Year 11, or equivalent
- you want to change your degree stream after Year 11, or equivalent

On successful completion* of your Foundation Studies program, you'll gain entry to the first year of any undergraduate degree at Murdoch University, with the exception of Veterinary Science. This course can be accessed through a Bachelor of Science in Animal Science.

*A higher requirement and specific subject scores are required for Law.

Structure and Pathway

In the Foundations Studies program you will complete eight units over two study periods, studying a combination of core and elective units. The units you undertake will be determined by your chosen degree. Each unit of study builds concepts from an introductory level through to university entrance level. The units are designed to develop your learning techniques as well as bridging gaps in your unit knowledge.

Foundation Studies Pathway

High School (Year 11)



Foundation Studies Program (MC)



Murdoch University

Foundation Units

You will study eight units depending on your bachelor degree at Murdoch University. All students must complete the two English units and units from the other Discipline Groups depending on your Bachelor Degree.

ENGLISH	MATHEMATICS	SCIENCE AND TECHNOLOGY	THE ARTS	BUSINESS AND LEGAL STUDIES
Essential Australian Studies	Introductory Mathematics	Information Technology for Academic Studies	Introduction to Media	Accounting
Introduction to Academic Communication	Mathematics for Science	Computer Science	Media Production	Management
		Physics		Economics
		Chemistry		
		Biology		

Murdoch University Preparation Course

Why Study a Murdoch University Preparation Course?

Our Murdoch University Preparation Course (MUPC) has 2 variations — a **standard course** delivered over 3 trimesters and made up of 9 units and an **accelerated** version made up of 4 units and delivered over 1 trimester.

MUPC (Accelerated) has been designed for students who narrowly missed the direct entry requirements for the degree program of their choice and provides them with the opportunity to improve their academic knowledge, and English language skills to enter university via a course which is appropriate to their previous level of study.

The standard variation of our MUPC is a 9-unit course which is delivered over 3 trimesters and gives students the time they need to develop the necessary skills to succeed in their university studies.

The program is suited to you if:

- you don't have the high school results for you to gain entry to your chosen bachelor degree
- you want to change your degree stream
- you need to improve your chances of entering highly competitive courses at Murdoch University

Murdoch University Preparation Course Pathway

High School (Year 11) > Murdoch University Preparation Course (MC) > Murdoch University

or

Murdoch University Preparation Course (Accelerated) Pathway

High School (Year 12) > Murdoch University Preparation Course (MC) > Murdoch University



Quick Facts – Standard Course

Duration:	3 trimesters (15 weeks per trimester)
Intake Dates:	27 Feb 2023
English Entry Requirements:	IELTS 5.5 overall (no band less than 5.0)
Academic Entry Requirements:	Completion of Australian Year 11 or equivalent (see Academic Entry Requirements page 18)
Study load:	8 hours per core unit per week, plus 6 hours per elective unit per week
Program Fee:	\$24,840
CRICOS Course Code:	069100D



Quick Facts – Accelerated Course

Duration:	1 trimester (15 weeks)
Intake Dates:	27 Feb 2023 and 23 Oct 2023
English Entry Requirements:	IELTS 5.5 overall (no band less than 5.0)
Academic Entry Requirements:	Completion of Australian Year 12 or equivalent (see Academic Entry Requirements page 18)
Study load:	26 hours per week
Program Fee:	\$12,420
CRICOS Course Code:	069100D

English Language Pathways



General English

Delivered by highly qualified and experienced English language teachers in a small-class setting, our **General English** course is designed to improve your core skills in reading, writing, listening and speaking. Students will graduate with the ability to communicate in English with confidence in everyday situations and feel prepared to take on further academic study in Australia.

English for Academic Purposes

Our **English for Academic Purposes** course will provide you with an IELTS-free pathway if you meet the academic, but not English language requirements for entry into Murdoch University. It focuses on the various reading, listening, study skills and strategies necessary for success in academic contexts.

It will also help to develop your vocabulary and grammar, particularly key academic skills of discussion and presentation. Murdoch College offers a flexible teaching structure that is tailored to your future study choices. If you plan to study a Foundation Certificate or Murdoch University Preparation Course, then you'll complete our English for Academic Purposes 1 (EAP1) course, with an entry of IELTS 5.0 overall. If you are preparing to enter university directly, you'll complete English for Academic Purposes 2 (EAP2), with an entry of IELTS 5.5 overall.

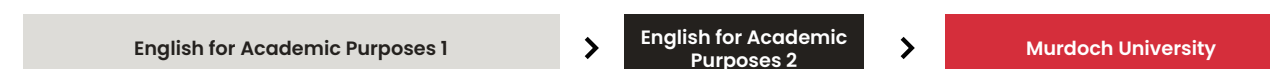
Here are some of the skills you can expect to develop across these four key areas:

- **Speaking** — Giving presentations, participating in seminars and tutorials, working in groups.
- **Listening** — Listening to lectures, note-taking techniques, listening skills practice.
- **Reading** — Strategies such as skimming and scanning, understanding assignment questions, coping with extended reading.
- **Writing** — Learning to construct paragraphs, essays, reports and summaries, analyses of numerical data and case studies, research and referencing techniques.

General English Pathway



English for Academic Purposes 1 Pathway



English for Academic Purposes 2 Pathway



General English CRICOS 069099C and English for Academic Purposes CRICOS 069098D

Accommodation



There are a range of accommodation options available for students when they come to study with us at Murdoch College, from on campus at Murdoch University Village, to independent rental or Australian Homestay. There's something for everyone.

1

On-campus Student Village

Enjoy the complete student experience by living on campus at Murdoch University. With easy access to classes and university facilities you'll have the opportunity to make friends in a fun environment where you will be encouraged to live, learn and grow. The Village also has direct access to public transport and a range of local shops, so nothing is ever too far away.

2

Shared or privately rented accommodation

If you want to live off-campus you have the option of renting a single room in a house or apartment that is occupied by several other people, or you can take on an entire lease for a single property yourself. In a share house you will have your own room, but amenities such as kitchens and bathrooms will generally be shared with your housemates. Shared accommodation is a great option if you don't want to live by yourself and you want to make friends with both local and international students.

3

Homestay

Homestay is a great option if you are looking to experience Australian culture and adapt to living and learning within a secure environment. You will be placed with a local host family who will welcome you into their home. Here you will benefit from a supportive family environment where English is the primary language spoken, allowing you to practice everyday conversation.

If you are under 18 you need to follow specific requirements about where you can live and who you can live with before you can get a student visa.

Please contact us for more information about accommodation options.



Entry Requirements

FOUNDATION STUDIES	MURDOCH UNIVERSITY PREPARATION COURSE (MUPC) / MUPC – ACCELERATED
IELTS Requirement 5.5 overall (all bands 5.0 or above)	IELTS Requirement 5.5 overall (all bands 5.0 or above)

Murdoch College Academic Entry Requirements by Country/Region

COUNTRY/REGION	FOUNDATION STUDIES AND MUPC	MUPC – ACCELERATED
Australia	Completion of Year 11 with pass grades; or completion of 3 terms of Year 11 with C grades; or Foundation Studies program from recognised Australian Universities/Colleges (incomplete); or Cert III from TAFE	Successful completion of Year 12; or Successful completion of a Foundation Studies program from recognised Australian Universities/Colleges; or Cert IV from TAFE
Bangladesh	Year 11 with GPA 2.5	Year 12 with GPA 2.5
Botswana	International General Certificate of Secondary Education; or Botswana General Certificate of Education with a minimum D grade (pass with credit)	Not accepted
Brazil	Titulo de Technico/Auxiliar Tecnico; or Certificado de Conclusao de Ensino Medio/Segundo Grau with a GPA of 5.0	Certificado de Conclusao de Ensino Medio/Segundo Grau with a GPA of 6.0
Cambodia	Diploma of Upper Secondary Education with 'E' grade average	Diploma of Upper Secondary Education with a 'D' grade average
Canada	Completion of Year 11 with pass grades	Completion of Year 12 with an average of 50% or higher
Chile	Completion of the Licencia de Educacion	Completion of the Licencia de Educacion with an average of 5.0 or above
China	Senior Middle 2 with 60% (including vocational schools)	Senior Middle 3 with an average of 60% across 4 academic subjects (including vocational schools)
Colombia	Bachillerato with 50% average	Bachillerato with an average of 70%
Fiji	Year 12 Examination/School Leaving Certificate with a minimum aggregate mark of 200 and 50% in English	Year 13 Certificate with a minimum aggregate mark of 200
Ghana	O Levels with 'D' grade average; or Completion of the West African Senior School Certificate with min 'D' average	A Levels with 2 'E' grades; or AS Levels with a minimum 3 'C' grades; or Completion of the West African Senior School Certificate with minimum 'C' average
Hong Kong	Completion of Form 5 with pass grades	HKDSE total score of 8 points across 5 academic subjects; or A Levels with 2 'E' grades; or AS Levels with a minimum 3 'C' grades
India	Year 11 with 50%	ISC and CBSE with an average of 50% in 4 academic subjects or 75% average in 3 academic subjects or Stateboard Class XII 60% average in 4 academic subjects or 75% average in 3 academic subjects
Indonesia	SMA II with 70%	SMA III with 60% in academic subjects
International	Completion of Year 11B; or O Levels with 'D' grade average	IB aggregate with 21pts; or A Levels with 2 'E' grades; or AS Levels with a minimum 3 'C' grades
Iran	3 year High School Diploma (theoretical stream) with a 'C' grade average (12 pt average) across academic subjects	4 year High School Diploma (theoretical stream) with a 'D' grade average (10 pt average) across academic subjects
Japan	Kotogakko Year 2, successful completion	Kotogakko Upper Secondary Certifictce with GPA 3.0 or higher
Kenya	Year 11 KCSE, successful completion	KCSE with 'C' grade average
Korea	Senior High School Year 2, successful completion	Senior High School Year 3, successful completion; or CSAT (English, Korean, Maths minimum of 100, all other subjects minimum of 50) High School Graduation Equivalency Examination with a minimum score of 50 in each exam
Kuwait	Completion of Shahadat Al-Thanawaya Al-Aama (General Secondary Education Certificate) with minimum overall grade 60%	Completion of Shahadat Al-Thanawaya Al-Aama (General Secondary Education Certificate) with a 70% average
Laos	Upper Secondary School (Baccalaureat) mark 5.0 or higher	Upper Secondary School (Baccalaureat) mark 6.0 or higher
Macau	Senior Middle 2 with 60% average	Senior Middle 3, successful completion
Malaysia	Form 5, successful completion; or SPM, successful completion; or UEC (Senior Middle 2), successful completion	Form 6, successful completion; or STPM, successful completion; or UEC (Senior Middle 3), successful completion; or BTEC Level 3

COUNTRY/REGION	FOUNDATION STUDIES AND MUPC	MUPC – ACCELERATED
Mauritius	O Levels with 'D' grade average	A Levels with 2 'E' grades; or AS Levels with a minimum 3 'C' grades
Myanmar	Completion of Basic Education High School Exam	Completion of Basic Education High School Exam with grade of 60% in final year results
Namibia	Namibia Senior Secondary Certificate (Ordinary Level) with a 'D' grade average	Namibia Senior Secondary Certificate (Higher Level) with a GPA of 2.0/4.0
Nepal	Year 11 HSC with 50% average Grade XI School Leaving Certificate with GPA 2.4	Year 12 HSC with 50% average
New Zealand	NCEA Level 2 completion	NCEA Level 3 with a minimum 42 credits across 3 University approved subjects
Nigeria	O Levels with 'D' grade average; or Completion of the West African Senior School Certificate with minimum 'D' average	A Levels with 2 'E' grades; or AS Levels with a minimum 3 'C' grades; or Completion of the West African Senior School Certificate with minimum 'C' average
Oman	General Secondary Education Certificate or American High School Diploma with 60% average in final year results	General Secondary Education Certificate or American High School Diploma average grade of 80% in final year results
Pakistan	HSC Year 11 with 55% average.	HSC Year 12 with 55% average
Philippines	Year 11 Senior High School with overall average grade of 60% or higher in academic subjects	Year 12 with an 80% average
Qatar	General Secondary Education Certificate (Shahadat Al-Thanawaya Al-Aama) with 65% average; or Qatar Senior School Certificate with a 650 grade average	Not accepted
Russia	Completion of Certificate of Secondary Complete General Education	Certificate of Secondary Complete General Education with GPA of 4.0 in academic subject
Saudi Arabia	Completion of the General Certificate of Secondary Education with an average of 60%	General Secondary Education Certificate with an average of 80% or better
Singapore	O levels with D grade average, N levels (academic stream only) with grade average of 4 ITE Certificate/Higher National ITE Certificate with GPA under 2.5	A Levels with 2 'E' grades or AS Levels with a minimum 3 'C' grades; or ITE Certificate/Higher National ITE Certificate with GPA 2.5 or above
South Africa	Year 11 of the National Senior Certificate with a 50% average	National Senior Certificate with a 50% average
Sri Lanka	O levels with 'D' grade average	A Levels with 2 'E' grades
Taiwan	Senior Middle 2, successful completion	Senior High School, successful completion
Tanzania	Certificate of Secondary Education with a Division I, II or III	Advanced Certificate of Secondary Education in Division I
Thailand	Mayatom 5, successful completion	Matayom 6, successful completion
Turkey	High School Diploma (Lise Diploması) with a minimum 50pt average (pass)	High School Diploma (Lise Diploması) with a minimum 60pt average (satisfactory)
UAE	General Secondary Education Certificate or American High School Diploma with 60% average in final year results	General Secondary Education Certificate or American High School Diploma average grade of 80% in final year results
Uganda	Uganda Certificate of Education with a Division I, II or III	Uganda Advanced Certificate of Education with a 'D' grade average
UK	O levels with 'D' grade (grade 3) average	A Levels with 2 'E' grades; or AS Levels with a minimum 3 'C' grades
USA	Completion of Year 11 with GPA 2.0 or GED 580 overall (min 145 in each subject)	High School Diploma with a GPA of 2.0 or higher or GED 610 overall (min 145 in each subject) or HS Diploma + SATs 800 (total score)
Vietnam	Year 11 with a minimum GPA 6.0	Year 12 with a minimum GPA 6.0
Global Assessment Certificate (GAC)	Average score of 50%	Average score of 55%
Zambia	Successful completion of the General Certificate of Education with a credit average O Levels with 'D' grade average	A Levels with 2 'E' grades; or AS Levels with a minimum 3 'C' grades
Zimbabwe	O Levels with 'D' grade average	A Levels with 2 'E' grades; or AS Levels with a minimum 3 'C' grades



2023 Fees

PROGRAM	NUMBER OF UNITS	TUITION FEE PER UNIT / WEEK	TUITION FEE *
Murdoch University Preparation Course (MUPC)	9	\$2,760	\$24,840
Murdoch University Preparation Course (MUPC) –Accelerated Entry	4	\$3,105	\$12,420
Foundation Studies	8	\$3,105	\$24,840
General English		\$450/week	Minimum 5 weeks
English for Academic Purposes (EAP)		\$450/week	\$4,500 (10 week module)

* Tuition fees only, additional fees apply full details can be found at murdochcollege.edu.au

2023 Key Dates

PROGRAM	TRIMESTER 1		TRIMESTER 2		TRIMESTER 3	
	START DATE	END DATE	START DATE	END DATE	START DATE	END DATE
Murdoch University Preparation Course (MUPC)	27 Feb 2023	9 June 2023				
Murdoch University Preparation Course (MUPC) –Accelerated Entry	27 Feb 2023	9 June 2023			23 Oct 2023	9 Feb 2024
Foundation Studies			26 June 2023	6 Oct 2023	23 Oct 2023	9 Feb 2024

English for Academic Purposes

PROGRAM	INTAKE 1		INTAKE 2		INTAKE 3	
	START DATE	END DATE	START DATE	END DATE	START DATE	END DATE
English for Academic Purposes–1 (10 weeks)	3 Apr 2023	9 June 2023	31 Jul 2023	6 Oct 2023	20 Nov 2023	9 Feb 2024
English for Academic Purposes–2 (10 weeks)	27 Feb 2023	5 May 2023	8 May 2023	14 Jul 2023	16 Oct 2023	22 Dec 2023
English for Academic Purposes–1 and 2 (20 weeks)	27 Feb 2023	14 Jul 2023	31 Jul 2023	22 Dec 2023		

General English (5 weeks)

START DATE	27 Feb 2023	3 Apr 2023	15 May 2023	19 June 2023	31 Jul 2023	4 Sep 2023	16 Oct 2023	20 Nov 2023
------------	-------------	------------	-------------	--------------	-------------	------------	-------------	-------------

How to Apply

International students can apply to study through a Murdoch College agent or directly via our application form. Follow these easy steps to secure your place with us.

For the full list of entry requirements, please visit murdochcollege.edu.au

Step 1

Download and complete the **Application Form** on **pages 23 to 25**.

Step 2

Please supply us with copies of the following:

- Academic qualifications
- English proficiency document
- Passport

Step 3

Send your completed application form and certified documents via email to admissions

Step 4

Application review. We will review your submitted application and supporting documents. If they are accepted, you will receive an **Offer of Admission to study**.

Step 5

Accept your offer. To proceed with your enrolment you will need to:

- Login to the Applicant Portal kaplink.kaplan.edu.au
- **Submit the evidence** required to meet the condition(s) outlined in the Offer (if applicable)
- **Carefully read your Offer** including **Terms and Conditions**
- **Accept the Offer** and complete the payment in the Applicant Portal kaplink.kaplan.edu.au



Application Form

Please print clearly in English and in BLOCK letters. Tick boxes where appropriate. Email the completed form and documents to admissions@murdochcollege.edu.au

Representative information

Representative name (if relevant)

City

Email Telephone

Representative signature

Student information (compulsory)

Title ☐ Mr ☐ Ms ☐ Other Gender ☐ M ☐ F ☐ Unspecified

Family name First name(s)

Date of birth (dd/mm/yyyy) Country of birth

Country of citizenship First language

Permanent address*

Australian address (if applicable)

City State/province Postcode

Country

Email Telephone

Passport number (if available) Expiry date

Do you hold Permanent Residency or a current Australian visa? ☐ Yes ☐ No ☐ N/A If yes, please provide a copy of your PR or current Australian visa.

Visa type (if relevant) Visa number (if relevant)

*Your permanent/home country address is required by the Australian Government. If it is not supplied your application cannot be processed

Parent / legal guardian details (compulsory for students under 18)

Title ☐ Mr ☐ Ms ☐ Other Gender ☐ M ☐ F ☐ Unspecified

Family name First name(s)

Relationship to student (i.e. mother or father)

Permanent address of Parent or Guardian

Email

Telephone

Education history

If you are currently completing a qualification, please indicate when you expect to complete this study (month/year).

Name and location of institution (starting from the most recent qualification)

Qualification/Award received Years attended (e.g. 2018–2020)

Name and location of institution

Qualification/Award received Years attended (e.g. 2018–2020)

Current English proficiency

Is English your first language? ☐ Yes ☐ No Have you studied at secondary/tertiary level with English as the language of instruction? ☐ Yes ☐ No

If yes, please provide evidence of language of instruction.

Do you have an English Language score? ☐ Yes ☐ No

If yes, please select one of the following ☐ IELTS ☐ iBT TOEFL ☐ Pearson Test of English ☐ Other Test date (dd/mm/yyyy) Score

Your on-campus pathway to Murdoch University

MURDOCH COLLEGE

Building 121, 90 South Street, Murdoch WA 6150

Telephone: 08 9423 1803

Email: info@murdochcollege.edu.au



murdochcollege.edu.au

Kaplan Higher Education Pty Ltd CRICOS Provider 03127E.

The information contained within this publication is correct at the time of production; however, information may change without notice in response to changing circumstances or for any other reason. You can find updated information on our website murdochcollege.edu.au

Enrolment terms and conditions apply. Please visit murdochcollege.edu.au for further details. Murdoch College assumes no responsibility for the accuracy of information supplied by third parties. Published November 2022 V1.