

# 文件下载自万友教育网站

版权归学校所有

www.oneuedu.com

## 万友优势 ADVANTAGE



### 客户信息私密性

录入系统后自动设置权限，除专属的案件专员其他内部人员及外部人员不可见



### 精英团队

文案专员为每位学生一对一定制专属方案，移民律师外部协助。团队为学生带来高质量服务



### 学生案件更新通知

当文案专员每完成一步，会更新在万友系统中，客户会以邮件的形式收到步骤更新通知，查看自己案件的最新进程



### 全程服务透明

无押金等不必要条款，客户案件信息透明，收费项会在案件开始前与客户协商一致，案件开始后无特殊意外情况，不会产生收费项目

## 提供服务 PROVIDE SERVICES

学校  
查询

课程  
查询

学生  
签证

留学  
准备

出发  
准备

绿卡  
资讯



详细流程请扫码  
添加客服为您解答



**WESTERN SYDNEY**  
UNIVERSITY



# UNDERGRADUATE GUIDE 2024



A portrait of a young woman with dark, wavy hair, smiling warmly at the camera. She is wearing a black V-neck top and a thin silver chain necklace with a small circular pendant. The background is a solid dark red. On the left side, there is a decorative graphic consisting of a cluster of overlapping circles in shades of yellow, orange, and purple, with a scalloped edge.


# UNLIN

---

**FRONT COVER**

Bayan Sohailee, Bachelor of International Studies/  
Bachelor of Social Science,  
Academy student. Learn  
more about The Academy  
on page 20.





**WE BELIEVE IN A WORLD OF  
UNLIMITED OPPORTUNITY,  
WHERE THE POTENTIAL FOR  
SUCCESS IS UNLIMITED FOR  
THOSE WITH DRIVE, TALENT,  
CONFIDENCE AND AMBITION.**

**SUCCESS STARTS HERE.**

**UNLIMITED.**

**ACKNOWLEDGEMENT OF COUNTRY**

With respect for Aboriginal cultural protocol and out of the recognition that its campuses occupy their traditional lands, Western Sydney University acknowledges the Darug, Eora, Dharawal (also referred to as Tharawal) and Wiradjuri peoples and thanks them for their support of its work in their lands (Greater Western Sydney and beyond).

---

**PICTURED**

Tamara Licastro,  
Bachelor of Social  
Science and Psychology



# HSC

# TRUE REWARD

## WESTERN'S EARLY OFFER PROGRAM

True Reward is Western Sydney University's main early offer program. It aims to reward Year 12 students for their performance in their strongest subjects, rather than looking at their ATAR.

At Western, we believe following your passion will set you up in life and in your chosen degree. Studying the subjects that enthral you, excite you and drive you to do your best will bring a sense of purpose and fulfillment, and can often lead to a career that is both personally and professionally rewarding.

Therefore we believe passion should be rewarded. Our HSC True Reward program gives select students an early offer to many of our programs based on Year 11 or Year 12 results in the subjects that matter most to your chosen degree.

Because True Reward puts the focus on the subjects that lay the foundation for success in specific degrees, it allows you to play to your strengths and embrace your passions.


---

Find out more about our **HSC True Reward** early offer program at:  
**[westernsydney.edu.au/hscruereward](https://westernsydney.edu.au/hscruereward)**

\* Offers made on Year 11 results are based on the condition that students successfully complete their HSC and any other specified requirements.





A close-up portrait of a young woman with long, wavy, light brown hair, smiling warmly at the camera. She is wearing a black top and a thin necklace with a small letter 'A' pendant. The background is a soft-focus outdoor scene with a red wall on the left and greenery on the right.

“Knowing that Western Sydney University saw the potential in me to offer me a position in the course created so much confidence and peace of mind throughout the last couple of weeks at high school.”

Hayley Rayner  
(pictured)  
Bachelor of Policing





## UNI IN THE WORLD 2022 & 2023

Times Higher Education Impact Rankings 2022 & 2023

# GOOD REASONS TO STUDY WITH WESTERN



**TOP 2%**  
OF UNIVERSITIES WORLDWIDE\*

\* Times Higher Education (THE) World University Rankings 2019–2023



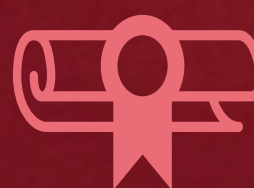
YOUNG UNIVERSITIES IN THE WORLD\*

\* Times Higher Education (THE) Young University Rankings 2022



**WORLD CLASS  
RESEARCH\***

\* Excellence in Research for Australia (ERA) 2018



**\$20M**  
IN SCHOLARSHIPS,  
GRANTS AND PRIZES



## 1 WE HAVE A REPUTATION FOR EXCELLENCE

We're ranked among the top two per cent of universities in the world, with an international reputation for research-led, student-centred learning.

## 2 WE PUT YOU AT THE HEART

Our student-centred approach offers you the choice of online, on-campus, and flexible study options combined with work integrated learning. Through work experience placements, internships and volunteering opportunities, you'll get the real-life experience, practical skills and knowledge that you need for your future career.

## 3 WE CARE MORE

At Western, we're here to help you discover your unique strengths. Our team of dedicated Western Success Advisers, along with a variety of student support services such as student welfare and careers support, clinics, counselling, disability services, academic and library support, will help you to grow in knowledge, skills and confidence.

## 4 WE PREPARE YOU FOR TODAY'S WORLD

Nine out of ten employers say great things about our graduates, including that they're more adaptable, employable, and have better technical skills.

## 5 WE EMBRACE TECHNOLOGY-ENRICHED LEARNING

From our online learning environments and use of digital technologies to enhance the study experience, to our on-campus computer laboratories and state-of-the-art library, research and clinical facilities, we adopt new and emerging technologies to provide a richer educational experience.

## 6 WE PROVIDE ADVANCED OPPORTUNITY, UNLIMITED SUCCESS

From advanced degrees and The Academy, to The College and alternative entry programs and scholarships, we provide multiple pathways for entry and academic success.



---

**PICTURED**

Kayden Edwards,  
Bachelor of Arts  
(Pathway to Teaching)



# YOU ARE HERE

Western Sydney University features campuses across Sydney, all within easy reach of transportation, amenities, services and accommodation.

Our leading-edge, technology-enabled learning facilities and innovative new buildings are complemented by heritage buildings that have defined our campuses for decades, creating a unique environment for education.



## PARRAMATTA CITY – ENGINEERING INNOVATION HUB

→ located on Darug country

Hassall St is Parramatta's most technologically advanced building, with first rate commercial and education facilities in a flexible and smart building design spread across nine levels.

Offering programs in architecture, industrial design and entrepreneurship, our Engineering Innovation Hub is developing the next generation of engineers, architects and entrepreneurial leaders. The Hub provides unparalleled opportunities for creative inspiration and cross-collaboration between students, educators, industry professionals and researchers.

Programs like Innovative Cities and Urban Transformations and Launch Pad tech startup incubator complement the University's integrated research programs.

Campus facilities include smartphone lift call capability, touchless smart bathroom amenities, cyber security integration and electric vehicle charging stations. It also houses the WSU International College and the International English Language Testing System (IELTS).



LEARN  
MORE







School of Medicine Building – Campbelltown campus



## BANKSTOWN CITY

→ located on Darug country

Bankstown City is a vibrant new campus offering an inspiring learning environment with top-of-the-line equipment and technology and advanced teaching and research facilities, as well as conference and social spaces. It offers opportunities for work integrated learning and has strong industry, community and business linkages providing collaborative enterprise partnerships.

Programs at this campus include teacher education, psychology, arts and humanities, business, accounting, IT and non-clinical health areas. It is also home to health, advanced manufacturing and education focused research programs.

Other features include a 'Factory of the Future' with an advanced manufacturing innovation space; a Smart Education Hub with cross-disciplinary education and research facility; a Centre for Educational Research (CER); as well as psychology laboratories.

## CAMPBELLTOWN

→ located on Dharawal country

Campbelltown campus is close to everything that's great about western Sydney. Offering a unique balance of city and rural lifestyles, you have access to fantastic cafés and world-class facilities with plenty of open space to relax and socialise between classes.

This campus houses the purpose-built School of Medicine, the Translational Health Research Institute (THRI) and the UniClinic – a cutting-edge clinical training facility for health science students. The Macarthur Clinical School is located on the nearby Campbelltown Hospital campus. There is also a biomedical magnetic resonance facility, anatomy laboratories, a nursing clinical practice unit and paramedicine 360-degree simulation space. Other facilities include a well-stocked library, a moot court and even an observatory.

## TRAVEL OPTIONS



**Public transport**



**Shuttle buses** run regularly between train stations and campuses



**Bike** – end of trip facilities, including bike parking, available on campus



**Drive or car pool**





Female Orphan School – Parramatta campus

## HAWKESBURY

→ located on Darug country

Set in a stunning location at the foot of the Blue Mountains, Hawkesbury campus offers contemporary facilities including the most technologically advanced glasshouse and greenhouse facilities. The campus fosters education and industry collaboration, helping to drive significant innovation in agri-tech and peri-urban research and development.

It is home to the Hawkesbury Institute for the Environment, a globally recognised and leading research institute. The School of Science is also

based at this location as is the National Protected Cropping Centre.

Other on-campus facilities include the Agri-Tech Hub which focuses on research in food technology, land use management and consumer demand; a food processing pilot plant; animal science facilities including working farms; a dedicated crime scene house for forensic science students; a nursing clinical practice unit; and a library.

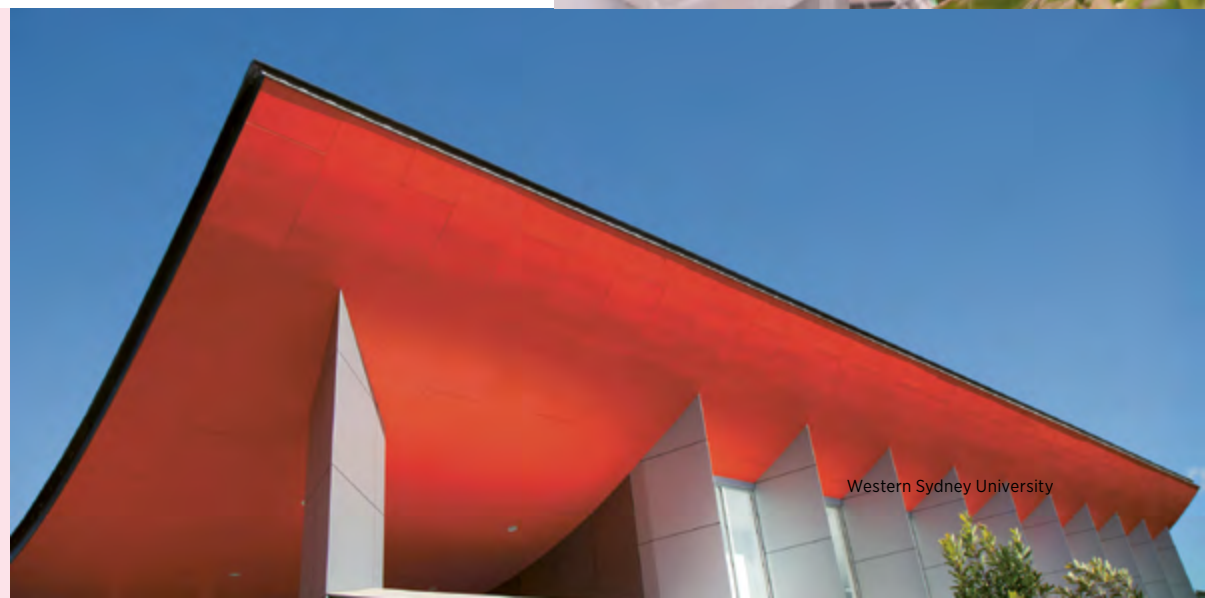


## NIRIMBA

→ located on Darug country

This leafy, green campus, with its outstanding recreational facilities, is an advanced learning hub hosting a range of local and international students from high school to mature-age. It is the home to Western's pathway programs, offered through The College.

Top facilities include an early childhood centre, science and exercise science laboratories, tiered and flat-floored lecture theatres and a well-resourced library.





## PARRAMATTA

→ located on Darug country

Parramatta is rapidly becoming the heart of Sydney's business, creative and cultural landscape. Western's Parramatta South campus gives you access to world-class academics and offers top-of-the-range facilities and technology in a combination of heritage and contemporary buildings, set on beautiful grounds adjacent to the Parramatta River.

With easy access via public transport, and regular shuttle buses connecting this campus to the Parramatta City campus precinct and the heart of the Parramatta CBD, this buzzing campus offers features as varied as computing laboratories, the amazing restoration of the Female Orphan School building (Whitlam Institute) and a scenic outdoor Sculpture walk.

The Institute for Culture and Society, the science and psychology building, and civil engineering facilities are all based at this campus. Other features include a nursing clinical practice unit, a moot court, advanced materials fabrication and characterisation facilities, as well as a purpose-built production studio and a design and creative arts facility.

## LIVERPOOL CITY

→ located on Darug country

The Ngara Ngura building, in the heart of Liverpool Central Business District, provides high quality, technology-rich and flexible teaching and learning spaces, as well as a dedicated floor for student life, with study areas, a student kitchen and areas to relax and socialise. It also offers nursing clinical practice units and has a whole floor dedicated to the library.

The building is close to the Westfield Shopping Centre and the Macquarie Plaza, providing dining options, retail and community amenities such as childcare. It is conveniently located only 800m from the Liverpool transport hub.







### **PARRAMATTA CITY CAMPUS PRECINCT**

→ located on Darug country

Our innovative Parramatta City campus precinct offers interactive, technology-enabled learning studios and unique study spaces. The precinct includes the Peter Shergold building (at 1 PSQ) and the Engineering Innovation Hub at nearby Hassall Street. Parramatta is a major urban centre, providing increased transport connectivity, employment opportunities, accommodation, access to retail and community amenities such as childcare.

### **PARRAMATTA CITY – PETER SHERGOLD BUILDING**

This contemporary campus, located in the heart of the bustling Parramatta CBD, features advanced technology interactive learning studios on each level and collaborative and quiet study spaces.

It includes the Sydney Graduate School of Management, Western Sydney University Justice Clinic, a tax clinic and a library hub.

There is a free shuttle bus to the Parramatta South campus for convenience and accessibility.





### PENRITH

→ located on Darug country

The Penrith campus is renowned for its advanced and cutting-edge facilities and scenic grounds. Boasting an amply stocked and technology-enabled library, computer engineering labs, electrical and electronic engineering lab, world-class music, teaching and gym facilities, it is dedicated to providing students with the highest-quality education, resources and support. In addition, it is conveniently located near key public transportation options.

Penrith campus is home to Western's acclaimed Solar Car project. Other highlights include a mechatronics and robotics facility; an advanced manufacturing and 3D print hub; the Launch Pad smart business centre; as well as psychology clinics and MakerSpace.

### SYDNEY OLYMPIC PARK

→ located on Wann-gal country

Sydney Olympic Park campus is in the heart of Sydney's Olympic precinct, with a bustling café and restaurant culture, stadiums and sporting facilities, entertainment venues, parks, medical centres, banks, retail shops and open spaces.

The campus is home to The College pathway programs – the official provider for entry into Western Sydney University for domestic and international students. This includes English Language programs and has one of Sydney's largest testing centres for IELTS (International English Language Testing System).

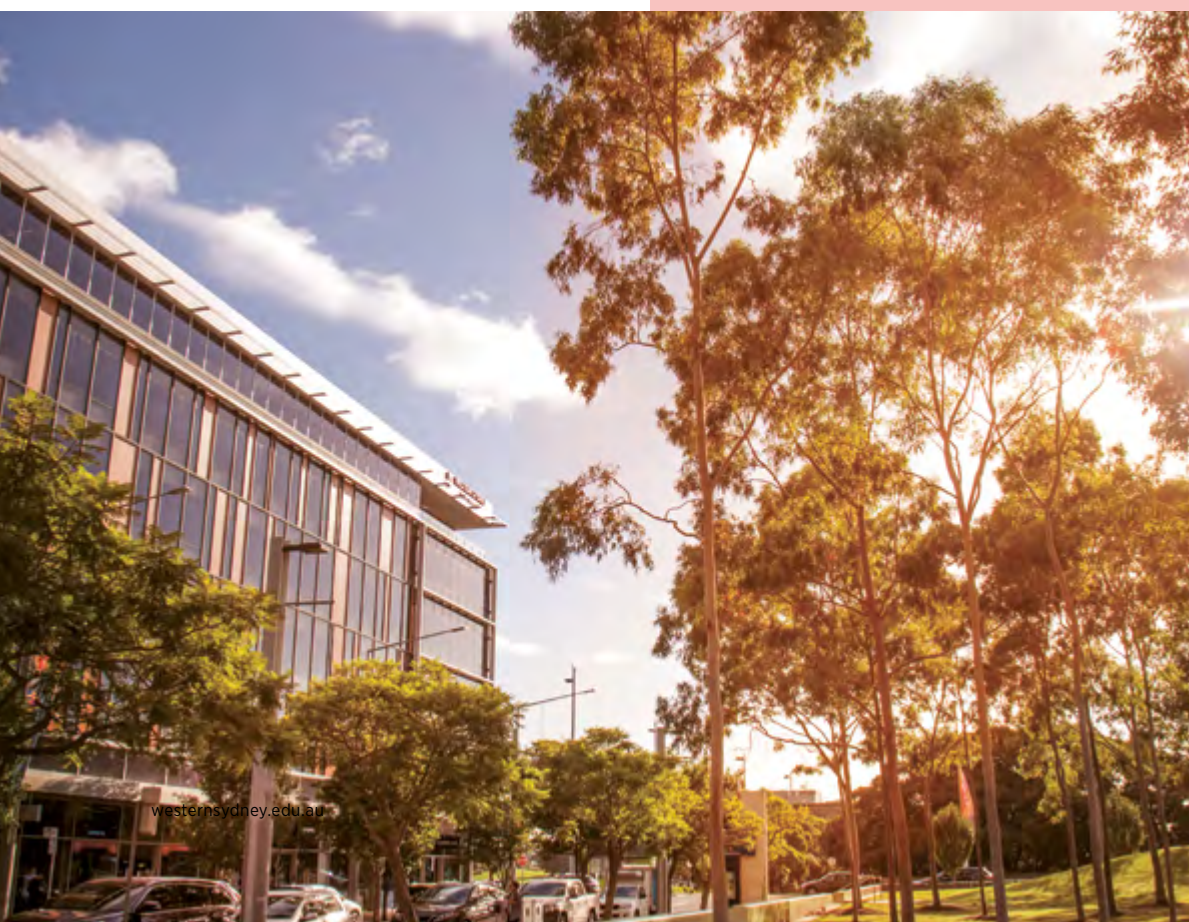
### SYDNEY CITY

→ located on Gadigal country

Western has partnered with Sydney Institute of Business and Technology (SIBT) to deliver our programs in the heart of the Sydney CBD. Located in a purpose-built, high-tech campus and close to transport, shops, cafés, bars, gyms and more, this campus offers flexible session dates, small classes and a more personalised learning experience.

The campus offers pathway programs to university. Facilities include the Navitas library, computer laboratories, innovative social learning spaces, wireless internet, collaborative and quiet study spaces and lots of open areas to relax.

Sydney City campus delivers the Western experience right in the heart of Australia's most iconic city.







# LIFE ON CAMPUS

One of the best things about life on campus is there's always something happening. From table tennis, outdoor chess, live music and sports, to one of many social events organised by the University or student clubs, you're bound to find something that's right for you.

## STUDENT SERVICES HUB

Student Services Hub is the first point of contact for any questions you have. We can give advice about enrolment and fees, help with forms and e-forms, and have a range of information brochures. To find out more, just call the Student Services Hub Infoline on **1300 668 370**.

## UNIVERSITY SPORT

Western Sydney University is actively involved in providing high-quality sporting opportunities for students of all interests and skill levels, as well as supporting our elite student athletes to succeed both

in the classroom and on the field. At Western there is something for everyone, from social lunchtime on-campus games to gala day events and inter-varsity competitions (the perfect blending of socialising and competing). As a participating member of UniSport Australia, Western offers students many chances to represent the University, including at our flagship event – the UniSport Nationals. Think the Olympics for Australian universities! Or join our Elite Athlete Program, designed to assist student athletes juggle their studies with competing in high level sport. Being involved in a sport not only promotes general health and wellbeing but is a great way to bond with your fellow Western students, have amazing experiences, develop lifelong friendships and grow as a person.

## FOOD

Western Sydney University boasts a number of food outlets on each campus including Subway, Oliver Brown and Piccolo Me.

For a full list of food outlet trading hours and locations visit: [westernsydney.edu.au/campuses](https://westernsydney.edu.au/campuses)



## LIBRARY

The Library is your central point of reference for learning success. Access high-quality scholarly resources for study in the collection and connect with Library staff, who are ready to share their academic expertise along your university journey.

Choose from a variety of study spaces to suit the way you like to study – shared, individual, quiet and silent study areas are available on campus. As a Western student, you can access multiple campus libraries and take advantage of after-hours access at identified campuses, in addition to accessing a wide range of digital resources from home.

Get a great foundation by completing online library tutorials about techniques and tools to help you find, evaluate and manage information effectively for assignments. Find out about referencing and citation styles, academic integrity expectations and general study tips such as how to analyse and interpret assignment questions, develop a convincing academic argument, or prepare for exams.

Visit [westernsydney.edu.au/library](https://westernsydney.edu.au/library)





### GET INVOLVED AND HAVE FUN

Check out *WESTERNLife*, our virtual community to share experiences, learn new things, join clubs and engage in everything student life has to offer.

There's always something happening on campus, including free breakfasts! Check out what's on by visiting:

[westernsydney.edu.au/campuslife](https://westernsydney.edu.au/campuslife)

### LEAD ENGAGE ASPIRE DEVELOP (LEAD)

LEAD is a SSAF funded leadership program open to all current Western students. With opportunities to attend a mix of conferences, networking events and workshops hosted by a range of alumni, industry professionals and Western, you will gain the skills required to build confidence, communication skills and become a leader. This flexible program includes both virtual and physical events across the academic year.

Visit [westernsydney.edu.au/lead](https://westernsydney.edu.au/lead)

### WESTERN CAREERHUB

As a Western Sydney University student we can help you plan your career, provide feedback on your résumé, information on building your résumé, help with your job hunt and prepare for interviews.

We offer:

- Workshops – build your practical job-seeking skills
- On demand resources – a library of self-paced, career development materials
- Jobs – on- and off-campus jobs, international internships and volunteer opportunities
- Career expos and events – meet your future employers and industry peers
- Tailored employability programs for our international students.

Visit [westernsydney.edu.au/careers](https://westernsydney.edu.au/careers)

### GYMS AND FITNESS

Western Sydney University offers gyms and fitness facilities on most campuses. Facilities include large, bright and spacious air-conditioned premises. Approachable experienced staff deliver exceptional personal training programs, conduct health tests, offer nutritional guidance and give you appropriate support throughout your fitness and lifestyle journey.

Visit [westernsydney.edu.au/gym](https://westernsydney.edu.au/gym) for more information.

### ON-CAMPUS ACCOMMODATION

Living on campus offers great opportunities to make new friends and experience all that university life has to offer. The University offers a wide range of high-quality, affordable accommodation options.

Find out more about accommodation visit: [westernsydney.edu.au/village](https://westernsydney.edu.au/village)



# RESEARCH IMPACT



Western Sydney University is a research institution driven by impact. We believe excellent research and practical outcomes are essential parts of our overarching research mission. Our research has real impact upon the social, economic and environmental wellbeing of our regional, national and international communities.

As a research-led institution, Western Sydney University sees learning and research as connected aspects of the student experience. Responding to the challenges faced by communities locally and globally, our research work is focused on four key themes:

#### Urban Living Futures and Society

Our research in this area addresses the need for adaptation strategies to create net zero cities and resilient communities to address the global climate emergency. Our researchers analyse related issues through the lens of urban living, seeking to understand the connections between key fields such as health, economies, culture and technology.

#### Health and Wellbeing

We take an integrated approach to health research, based on the assumption that the environments in which we live, the cultural background from which we come, and the work we do all affect our physical and mental health. Our research explores how health initiatives can prevent disease and illness, encourage healthy lifestyles in individuals and communities, and reduce the cost and impact of illness.

#### Education and Work

We draw on the diversity of western Sydney to underpin research that explores education access on a global scale. This research theme respects the economic, social and cultural aspirations of the individuals and communities we support. We are committed to realising the opportunities offered by new pedagogies and transformational technologies for all of our students.

#### Environment and Sustainability

We are in the midst of unprecedented global environmental changes affecting the world. These are creating new challenges that range from contested land use to urban and agricultural climate change adaptation, to biodiversity conservation, and new interdisciplinary ways of engaging with socioecological dynamics. Our research takes a practical and collaborative approach to solving these challenges by focusing on maintaining and managing the diversity of urban ecologies and agricultural and natural systems.

Learn more about our research themes:

[westernsydney.edu.au/dvcresearch/dvc\\_research/research\\_theme\\_program](https://westernsydney.edu.au/dvcresearch/dvc_research/research_theme_program)

### STRATEGIC RESEARCH INITIATIVES

Western's Strategic Research Initiatives bring a cross-disciplinary focus to important issues to arrive at solutions that can be translated into real life actions – through policy, practice, economic change and health advances – that make a difference beyond our University's gates.

Western's Strategic Research Initiatives imagine the new narratives of social transformation needed in our time of crises. They are tackling big issues – the start to life; developing resilience in youth; solving problems of the modern age through technological innovations inspired by biology; and guiding communities and infrastructure into sustainable, equitable and resilient futures.

[westernsydney.edu.au/strategic-research-initiatives](https://westernsydney.edu.au/strategic-research-initiatives)

### INSTITUTES AND CENTRES

#### HAWKESBURY INSTITUTE FOR THE ENVIRONMENT

→ HAWKESBURY CAMPUS

Investigating the impact of climate change on native trees and forests.

[westernsydney.edu.au/hie](https://westernsydney.edu.au/hie)

#### INSTITUTE FOR CULTURE AND SOCIETY

→ PARRAMATTA SOUTH CAMPUS

Research to meet the challenges of our changing social landscape.

[westernsydney.edu.au/ics](https://westernsydney.edu.au/ics)

#### MARCS INSTITUTE FOR BRAIN, BEHAVIOUR AND DEVELOPMENT

→ WESTMEAD INNOVATION QUARTER

Dedicated to understanding the scientific basis of human communication.

[westernsydney.edu.au/marcs](https://westernsydney.edu.au/marcs)

#### INSTITUTE FOR AUSTRALIAN AND CHINESE ARTS AND CULTURE

→ PARRAMATTA SOUTH CAMPUS

Forging a greater understanding of Chinese culture, relationships with Chinese universities and supporting students studying Chinese language and culture.

[westernsydney.edu.au/iac](https://westernsydney.edu.au/iac)

#### NICM HEALTH RESEARCH INSTITUTE

→ WESTMEAD CAMPUS

Australia's leader in integrative and complementary medicine research and policy.

[westernsydney.edu.au/nicm](https://westernsydney.edu.au/nicm)

#### TRANSLATIONAL HEALTH RESEARCH INSTITUTE

→ CAMPBELLTOWN AND WESTMEAD INNOVATION QUARTER

Focusing on the integration and translation of research into best practice and policy, based on government health priorities and community needs.

[westernsydney.edu.au/thri](https://westernsydney.edu.au/thri)

#### INTERNATIONAL CENTRE FOR NEUROMORPHIC SYSTEMS (ICNS)

→ WERRINGTON SOUTH CAMPUS

A world leader in the development of Neuromorphic Perception Solutions.

[westernsydney.edu.au/icns](https://westernsydney.edu.au/icns)

#### YOUNG AND RESILIENT RESEARCH CENTRE (YRRC)

→ PARRAMATTA SOUTH CAMPUS

Generating evidence-based policy and practice outcomes that leverage the digital to strengthen the resilience of young people and their communities.

[westernsydney.edu.au/young-and-resilient](https://westernsydney.edu.au/young-and-resilient)

#### TRANSFORMING EARLY EDUCATION AND CHILD HEALTH (TeEACH)

→ WESTMEAD CAMPUS

Working to address inequities in child health, development and wellbeing through multi-disciplinary applied research.

[westernsydney.edu.au/teeach](https://westernsydney.edu.au/teeach)

#### URBAN TRANSFORMATIONS RESEARCH CENTRE

→ PARRAMATTA ENGINEERING INNOVATION HUB

Addressing one of the greatest challenges facing humankind: How to transform our communities and infrastructure into sustainable, equitable and regenerative futures.

[westernsydney.edu.au/engineering-innovation-hub/eih](https://westernsydney.edu.au/engineering-innovation-hub/eih)



## Future thinking. Unlimited possibilities.

Unique to Western Sydney University, The Academy is for students who want to learn, grow and transform as a leader and changemaker.

Within an interdisciplinary environment, The Academy provides extension-level academic development, service-learning opportunities, international and national experiences, mentoring with industry leaders and a range of professional and personal development workshops.

The Academy's Bachelor of Creative Leadership program develops your knowledge and skills in leadership and ethics and helps you grow your capacity to lead in a complex and changing world. Offered at the Parramatta campus, it is designed to be taken concurrently or upon completion of another Western degree. The three year duration includes two years of credit for prior learning from your primary Western degree\*.

If you'd like to find out more about joining our community of leaders, visit [westernsydney.edu.au/theacademy](https://westernsydney.edu.au/theacademy)



---

**BAYAN SOHAILEE**  
ACADEMY STUDENT

**Bachelor of International Studies/  
Bachelor of Social Science**

**Bachelor of Creative Leadership**

Bayan is an ethnic Kurdish refugee who fled from Iran when he was six years old.

"I am passionate about giving voices to those that were silenced. One day I hope to be a human rights attorney so that I can give a voice to the silenced voices of Kurds back in Iran. Even if I can give a voice back to one person then that would be a success."





# The Academy

# Learn Grow *Transform*

## CAREER OPPORTUNITIES

This flexible degree provides transformative educational experiences, access to unique internships and student-led projects, and community engagement opportunities that will expand your ability to examine and influence current and future social issues. The Bachelor of Creative Leadership is designed to be combined with most Bachelor degrees at Western. You will emerge with a sound balance of theory, practical experiences, and leadership skillsets – so you can have a meaningful impact on local and global social challenges, as well as taking your career further.

## THE ACADEMY

DEGREE	CAMPUS	DURATION	LSR
B Creative Leadership*	Parramatta	3F/6P	N/A

Key: LSR = Lowest Selection Rank, B = Bachelor of, F = Full-time, P = Part-time, N/A = Not applicable; not based on the ATAR; or the program is not offered to current Year 12 applicants or no offers were made to Year 12 applicants in these rounds.

Note: \* The BCL is designed to be taken concurrently or upon completion of another WSU degree. 3 year duration includes 2 years of credit for prior learning from your primary WSU degree. Students must be eligible to graduate from their primary degree in order to be granted credit for prior learning in the Bachelor of Creative Leadership.









**YOU CAN**

# STUDY



At Western Sydney University, we will teach you the knowledge and skills to reach your true potential. Study with us and you will have the tools to reach your goals and achieve success.

With one of the most comprehensive range of programs in Australia, our curriculum and approach to flexible learning with real work experience is designed to be a springboard for the career success and life you've always dreamed of. Benefit from adaptable study options, access to state-of-the-art facilities, and the support of world-class academics.

Our transdisciplinary minors are a great complement to your degree. You can choose to study subjects outside your field which would normally only be offered to those in that particular degree. This allows students to expand their horizons and future-proof their degrees.

Over two thirds of our students combine study with work, getting real industry experience to complete their degrees as job-ready graduates in preparation for that next stage of life.

To find out more about our programs, contact the Course Information Centre on **1300 897 669** or [study@westernsydney.edu.au](mailto:study@westernsydney.edu.au)

For more information, visit [westernsydney.edu.au/future](https://westernsydney.edu.au/future)



**ARTS AND COMMUNICATION**

**DESIGN AND BUILT ENVIRONMENT**

**BUSINESS AND ACCOUNTING**

**CREATIVE INDUSTRIES, DESIGN AND MUSIC**

**CRIMINOLOGY, POLICING AND CYBER SECURITY**

**DATA SCIENCE AND MATHEMATICS**

**ENGINEERING AND INDUSTRIAL DESIGN**

**HEALTH AND SPORT SCIENCES**

**INFORMATION TECHNOLOGY (COMPUTING)**

**LAW**

**MEDICINE**

**NURSING AND MIDWIFERY**

**PSYCHOLOGY**

**SCIENCES**

**SOCIAL WORK AND SOCIAL SCIENCES**

**TEACHING AND EDUCATION**

**TOURISM, EVENTS AND URBAN PLANNING**

**DEGREE FOR ABORIGINAL AND TORRES STRAIT ISLANDER PEOPLES**

**ONLINE DEGREES**

**THE ACADEMY**

**THE COLLEGE**

**MICROCREDENTIALS**



---

## PROFILE

**Ebube Uba**

(pictured)

Graduate

Bachelor of Communication

“The Bachelor of Communication at Western gave me the opportunity to test the waters and find my strengths which eventually led me into a fruitful career in film and public arts programming.”

# ARTS AND COMMUNICATION



## COMMUNICATE WITH IMPACT

An Arts or Communication degree from Western Sydney University can open the door to a huge range of careers across many industries. Learn critical skills to challenge conventional thinking and hone your communication skills while gaining a deep understanding of media's influence on our world. Grow your professional skills, and master legal and ethical storytelling. Your degree will be supported by academics who are internationally recognised. Immerse yourself in subjects like Culture and Society, Creative Writing, Digital Cultures, International Relations and Asian Studies, Languages or Psychological Studies to name just a few. Choose a double degree and combine your studies with Business, Information Technology, Law, Science or Teaching to widen the breadth of your degree. Our accredited Bachelor of Communication degree offers a unique suite of communication, design, music and creative industry subjects. This includes majors in Journalism, Advertising or Public Relations. Develop job-ready skills in communication, digital media, media production, research and innovation. International Studies develops your capacity to analyse the historical development of relations among nation states and contemporary political, social and cultural issues, such as globalisation, transnationalism and migration.

### OUR RANKINGS



## TOP 200

IN THE WORLD FOR COMMUNICATION AND MEDIA STUDIES\*



## TOP 150

IN THE WORLD FOR LINGUISTICS\*



## TOP 250

IN THE WORLD FOR ENGLISH LANGUAGE AND LITERATURE\*

\* QS World University Rankings 2023

## ARTS AND COMMUNICATIONS

DEGREE	CAMPUS	DURATION	LSR
B Arts	Bankstown City, Parramatta, Penrith	3F/6P	60
B Arts (Interpreting and Translation)	Parramatta City	3F/6P	65
B Arts (Pathway to Teaching Early Childhood/Primary)/M Teaching (Birth-5 Years/Birth-12 Years)*	Bankstown City, Parramatta, Penrith	4.5-5F/EqP	60
B Arts (Pathway to Teaching Early Childhood/Primary)/M Teaching (Birth-5 Years/Birth-12 Years) Diploma pathway*	Bankstown City, Parramatta, Penrith	3.5-4F/EqP	NA
B Arts (Pathway to Teaching Primary)/M Teaching (Primary)*	Bankstown City, Parramatta, Penrith	4-4.5F/EqP	60
B Arts (Pathway to Teaching Secondary)/M Teaching (Secondary)*	Bankstown City, Parramatta, Penrith	4-4.5F/EqP	60
B Communication	Parramatta	3F/6P	65
B Communication	Sydney City	3F	65
B Communication	Online	3F/6P/D	75
B International Studies	Bankstown City, Parramatta	3F/6P	65
B Languages and Linguistics	Bankstown City, Parramatta	3F/6P	65

COMBINED DEGREES	CAMPUS	DURATION	LSR
B Arts/B Laws	Campbelltown, Parramatta	5F/10P	90
B Arts (Psychology)/B Laws	Campbelltown, Parramatta	5.5F/11P	90
B Arts/B Business	Bankstown City, Parramatta	4F/8P	65
B Arts/B Social Science	Bankstown City, Parramatta, Penrith	4F/8P	65
B Arts/B Creative Industries	Parramatta	4F/8P	65
B Communication/B Business	Parramatta	4F/8P	65
B Communication/B Creative Industries	Parramatta	4F/8P	65
B Communication/B Laws	Campbelltown, Parramatta	5F/10P	90
B International Studies/B Business	Bankstown City, Parramatta	4F/8P	65
B International Studies/B Social Science	Bankstown City, Parramatta	4F/8P	65
B International Studies/B Laws	Campbelltown, Parramatta	5F/10P	90
B Communication/B International Studies	Parramatta	5F/10P	65
B Science/B Arts	Parramatta	4F/8P	65
B Science/B International Studies	Parramatta	4F/8P	65

Key: LSR = Lowest Selection Rank, B = Bachelor of, F = Full-time, P = Part-time, N/A = Not applicable; not based on the ATAR; or the program is not offered to current Year 12 applicants.

Note: \* To obtain teaching accreditation, a Master of Teaching must be completed following the Bachelor degree.

### CAREER OPPORTUNITIES

**Arts graduates** may find employment as arts administrators, teachers (with further study), writers, authors, journalists, politicians, diplomats, community planners, librarians, historians, publishers or researchers.

Opportunities also exist in non-government organisations and community-based industries, overseas organisations and policy development.

Our double degrees provide scope for even more career opportunities.

**Communications graduates** pursue careers as journalists, social media strategists, publicists, events organisers, advertising creatives, media planners, account executives and more.

Graduates have gone on to work for the ABC, NewsCorp, Google, Spotify, Ogilvy, Universal Music, McCann Worldwide and the Australian Ballet, to name a few.



## BUILDING A BETTER WORLD – BRICK BY BRICK

The built environment refers to man-made surroundings ranging from buildings and infrastructure to parks and streetscapes and has a significant impact on our daily lives. Degrees in Architecture, Building Design Management, Construction Management and Industrial Design underpin the built environment which is shaped by variety of factors including policy, planning, design, technology, and social and cultural values. Our research in these fields transects industry, community and government at national and global levels. Study a degree in Built Environment and make a difference to our physical world, influencing everything from the way we move around and interact with others to our health and wellbeing. A significant program in Architecture includes Urban Transformation which is accredited by the Architect Accreditation Council of Australia and engages directly with contemporary global projects. Construction and Building Design Management at Western are leading research globally in sustainable construction, building information modelling, as well as affordable housing and innovation on building materials. Our nationally recognised Industrial Design programs produce graduates highly proficient in human-centred design, new product development innovation, and advanced computer aided design communication for manufacture.

### OUR RANKINGS



**TOP 250**

IN THE WORLD FOR ARCHITECTURE  
AND BUILT ENVIRONMENT\*

\* QS Subject Rankings 2023

## DESIGN AND BUILT ENVIRONMENT

DEGREE	CAMPUS	DURATION	LSR
B Architectural Design	Parramatta City	3F/6P	70
B Building Design Management	Parramatta	4F/8P	60
B Construction Management (Honours)	Parramatta	4F/8P	60
	Penrith	4F/8P	60
B Construction Technology	Penrith	3F	60
B Design and Technology	Parramatta City	3F/6P	60
B Industrial Design	Parramatta City	4F/8P	60
B Industrial Design (Honours)	Parramatta City	4F/8P	60

COMBINED DEGREES	CAMPUS	DURATION	LSR
B Construction Management Studies/B Laws	Campbelltown	5F/10P	90
	Parramatta	5F/10P	90

Key: LSR = Lowest Selection Rank, B = Bachelor of, F = Full-time, P = Part-time.

### CAREER OPPORTUNITIES

As a graduate of architectural design, you can look forward to career opportunities in architecture, urban design, urban planning and interior architecture.

Our building design management graduates can find employment as a design manager, project manager or design and construction builder.

As a construction graduate, you may find employment as a construction manager, project manager, site manager, contract administrator, quantity surveyor, building surveyor, estimator, facilities manager, building economist, property

manager/developer or building consultant.

Our industrial design graduates may find employment as an in-house or consultant industrial designer or in a product development team in areas such as medical products, furniture, digital wearables, architectural products, building design, sports equipment, smart gadgets or new products for Internet of Things (IoT), VR, AR or UX start-up businesses.

### MAKERSPACE



Makerspace offers 3D printing services in both photopolymer and fused deposition machines as well as woodwork and metal workshops, laser cutting, CNC routers and other fabrication equipment. The facility is open at our Parramatta Engineering Innovation Hub and Penrith campuses.

[westernsydney.edu.au/makerspace](https://westernsydney.edu.au/makerspace)



# DESIGN AND BUILT ENVIRONMENT



# BUSINESS AND ACCOUNTING



## EMPOWER YOUR BUSINESS AND FINANCIAL SUCCESS

Degrees in Business or Accounting from Western Sydney University stand out from other similar degrees. With a program structure unique to Western, our Business and Accounting degrees are tailor-made to the challenges and demands of changes in industry, technology and careers. Unlike traditional degrees, you build your degree as you go to best suit your area of specialisation. You can choose an additional major outside the Business stream to give you a more diverse set of skills and knowledge – and you begin your major in the first year of study. Choose areas of study that interest you most, and depending on the majors and electives you choose, the Bachelor of Business can also see you graduate with industry-specific accreditation from Australia's leading institutions. Our Bachelor of Accounting is accredited with Certified Public Accountant (CPA), Chartered Accountants Australia & New Zealand (CAANZ) and the Institute of Public Accountants (IPA), and uniquely provides the option of additional accreditations with the Financial Planning Association of Australia (FPA) and approval from the Tax Practitioners Board (TPB).

### CAREER OPPORTUNITIES

These programs provide the foundations for the development of Australia's future business leaders. As a graduate, you may seek a management traineeship, become involved in a management consultancy or find a career associated with the discipline in which you complete a major. Examples include employment in public practice, taxation consulting, merchant banking, financial services management, economic advising, business analytics, sport management, roles in service-oriented businesses, employment relations, human resources, industrial relations, marketing firms, operations or logistics organisations, international business, property development and valuation firms.

## BUSINESS AND ACCOUNTING

DEGREE	CAMPUS	DURATION	LSR
B Business <i>Specialise in:</i> Accounting, Applied Finance, Business Analytics, Economics, Human Resource Management, International Business, Management, Marketing, Property, Sport Management	Bankstown City	3F/6P	65
	Campbelltown	3F/6P	65
	Parramatta City	3F/6P	65
	Sydney City^	3F	65
B Accounting	Bankstown City	3F/6P	75
	Campbelltown	3F/6P	75
	Parramatta City	3F/6P	75
	Sydney City^	3F	75
B Business (Pathway to Teaching Secondary)/ M Teaching (Secondary)	Bankstown City	4.5-5F/EqP	70
	Campbelltown	4.5-5F/EqP	70
	Parramatta City	4.5-5F/EqP	70
B Business (Property)*	Distance	3F/6P/D	65

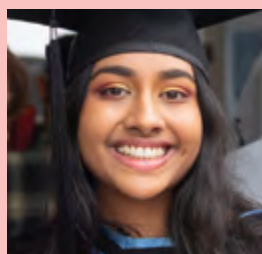
  

COMBINED DEGREES	CAMPUS	DURATION	LSR
B Accounting/B Laws	Campbelltown	5F/10P	90
	Parramatta	5F/10P	90
B Arts/B Business	Bankstown City	4F/8P	65
	Parramatta	4F/8P	65
B Business/B Laws	Campbelltown	5F/10P	90
	Parramatta	5F/10P	90
B Engineering (Honours)/B Business	Bankstown City	5F/10P	70
	Campbelltown	5F/10P	70
	Parramatta City	5F/10P	70
	Penrith	5F/10P	70
B Information and Communications Technology/ B Business	Bankstown City	4F	70
	Campbelltown	4F	70
	Parramatta	4F	70
B Information and Communications Technology/ B Business (Accounting)	Campbelltown	4F	70
	Parramatta	4F	70
B Information Systems/B Business	Campbelltown	4F/8P	70
	Parramatta	4F/8P	70
B Information Systems Advanced/B Business	Campbelltown	4F/8P	95
	Parramatta	4F/8P	95
B International Studies/B Business	Bankstown City	4F/8P	65
	Parramatta	4F/8P	65
B Science/B Business	Campbelltown	4F	65
	Hawkesbury	4F	65
	Parramatta	4F	65

Key: LSR = Lowest Selection Rank, B = Bachelor of, F = Full-time, P = Part-time.

^ Sydney City campus offers the following Business majors: Accounting, Applied Finance, International Business, Management and Marketing. Degree may be fast-tracked in 2 years.

\* Property major offered externally.



### PROFILE

#### Rose Lewis

Bachelor of Business (Applied Finance)/  
Bachelor of Laws

Growing up in Blacktown, Rose is one of four siblings who attended the University. "Like so many students, I was breaking ground by attaining a qualification my family never had before. Western Sydney University is a second home to my family. The University is filled with people who want to see you succeed."



# CREATIVE INDUSTRIES, DESIGN, MUSIC AND SCREEN MEDIA



## UNLEASH YOUR CREATIVE POTENTIAL

Western Sydney University creative practice degrees provide students with a strong foundation in their chosen field of study, and help develop creative thinking, problem-solving and communication skills. In today's world where change is constant, these skills are highly sought after by employers. Creative thinkers, musicians, designers and communicators are employed across many industries, not just the Arts. A Bachelor of Creative Industries gives you the opportunity to combine your studies in Arts, Communication, Design and Music with programs in Business and Law. In a fluid employment market, this gives graduates a distinct advantage. Creative degrees in Design (Visual Communication), Music and Screen Media enable you to specialise in your field, with in-depth development of broad industry-relevant knowledge and skills. We also offer a Graphic Design/Pathway to Teaching (Secondary) degree, which is your pathway, with further study, to a career as a high school teacher.

### OUR RANKING



# TOP 150

IN THE WORLD FOR  
COMMUNICATION

\* QS World University Rankings 2023

### PROFILE

**Micah Williams**  
(pictured left)  
Bachelor of Design (Visual  
Communication)

"The course at Western really challenged my thinking, and my ability to come up with ideas and be critical about my work. It definitely set me up for success in the future."

## CREATIVE INDUSTRIES, DESIGN, MUSIC AND SCREEN MEDIA

DEGREE	CAMPUS	DURATION	LSR
B Creative Industries Major in: Advertising, Public Relations, Enterprise Innovation, Creative Writing, English, Journalism, Graphic Design, Music, Sound Production, Screen Media, Law and the Creative Industries	Parramatta	3F/6P	65
B Creative Industries (Music)	Parramatta	3F/6P	65
B Design (Visual Communication)	Parramatta	4F/8P	65
B Graphic Design (Pathway to Teaching Secondary)/ M Teaching (Secondary)*	Parramatta	4.5-5F/EqP	60
B Music	Penrith	3F/6P	40
B Screen Media (Arts and Production)	Parramatta	3F/6P	65

COMBINED DEGREES	CAMPUS	DURATION	LSR
B Arts/B Creative Industries	Parramatta	4F/8P	65
B Communication/B Creative Industries	Parramatta	4F/8P	65
B Design/B Creative Industries	Parramatta	4F/8P	65
B Music/B Creative Industries	Penrith	4F/8P	65

Key: LSR = Lowest Selection Rank, B = Bachelor of, F = Full-time, P = Part-time

\* To obtain teaching accreditation, a Master of Teaching must be completed following the Bachelor degree. Check the University Handbook for durations.

### CAREER OPPORTUNITIES

The inter-disciplinary nature of our creative programs reflects the contemporary workplace. As a graduate, this prepares you for roles in a range of creative industries, either working for an employer, freelancing or even starting your own company. The unique flexibility of our creative programs provides you with diverse career options.

As a Creative Industries graduate, you may find yourself organising a music festival, designing social media campaigns for blue-chip brands, creating

music videos, or using your skills to help others in not-for-profit organisations. Or in Screen Media, focus on content creation in film, television, web series and more.

As a Design graduate, you'll enjoy a career in web, interactive and app design, motion graphics, brand or games design, photography or illustration.

Our Music graduates pursue careers in performance, composition, music production, and with further study, teaching or music therapy.

### MEDIA STUDIO AND POST-PRODUCTION FACILITIES



Explore your potential in our \$2 million, purpose-built media studio and post-production facilities.



### SAFEGUARD SOCIETY

Degrees in Criminology, Policing and Cyber Security can set you up for a great career in the police force, criminal and community justice systems, corrective services, border protection, intelligence, cyber security, data analytics or forensics or computer forensics. A career in these fields can be both challenging and rewarding. The future of cyber security relies on people like you who are able to think quickly, find innovative solutions, and work to keep the data of companies and nations secure, as well as protect our individual privacy. It is a rapidly growing field that is essential for the smooth operation of businesses, organisations and governments in today's connected world. Western Sydney University's Policing degree is the only one based in metropolitan Sydney. We have strong ties with police recruiters increasing your chances of joining the NSW, Victorian or Australian Federal Police. Our Bachelor of Cyber Security and Behaviour degree is the only cyber security degree in Australia that analyses both the technical and human side, placing you at the forefront of a dynamic digital world.

#### CAREER OPPORTUNITIES

As a graduate, you may find a career in policing, other Commonwealth or state law enforcement and criminal justice agencies, intelligence agencies, border protection, security management, fraud management and investigation roles within the corporate or local government sectors, forensics or computer forensics.

Graduates also seek roles in corrective services, probation and parole, crime prevention, or as policy advisors or social workers in the area of community corrections.



**THE ONLY**  
SYDNEY-BASED POLICING  
DEGREE

### CRIMINOLOGY, POLICING AND CYBER SECURITY

DEGREE	CAMPUS	DURATION	LSR
B Criminology	Liverpool City	3F/6P	60
	Penrith	3F/6P	60
B Criminal and Community Justice	Liverpool City	3F/6P	60
	Penrith	3F/6P	60
B Cyber Security and Behaviour	Parramatta	3F/6P	75
B Policing (Leadership Program)	Liverpool City	3F/6P	95
	Penrith	3F/6P	95
B Policing	Liverpool City	3F/6P	60
	Penrith	3F/6P	60

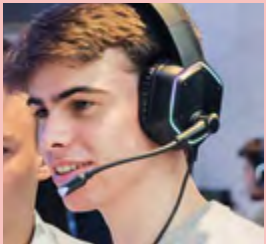
COMBINED DEGREES	CAMPUS	DURATION	LSR
B Criminology/B Laws	Campbelltown	5F/10P	90
	Parramatta	5F/10P	90
B Criminal and Community Justice/B Laws	Campbelltown	5F/10P	90
	Parramatta	5F/10P	90
B Criminal and Community Justice/B Social Work	Liverpool City	5F/10P	85

Key: LSR = Lowest Selection Rank, B = Bachelor of, F = Full-time, P = Part-time.

### WESTERN CENTRE FOR CYBER SECURITY AID & COMMUNITY ENGAGEMENT



Western CACE is a secure facility where students are trained to assist small businesses with cyber incident response. Students can train for one year alongside their studies, making them eligible to undertake important industry cyber security certifications.



#### PROFILE

**Bryce Marchant**  
Bachelor of Cyber Security and Behaviour

"I really enjoy learning the inner workings of our digital landscape, which we now heavily rely on for so many aspects of our life...I aspire to work on major cyber security threats and attacks. Western Sydney University does an amazing job at setting up closed digital environments for cyber security students to go over scenarios."



---

**PICTURED**

Rabih El-Hage  
Graduate, BA in Policing,  
Criminology and Law  
with Honours, Academic  
Excellence Award recipient

# CRIMINOLOGY, POLICING AND CYBER SECURITY



# ENGINEERING AND INDUSTRIAL DESIGN

## SOLAR CAR PROJECT



Western Sydney University's Solar Car project is a student-led team that strives to push the boundaries of innovation and precision engineering with a social and sustainable responsibility to the community.

[westernsydney.edu.au/solarcar](https://westernsydney.edu.au/solarcar)



## BE INNOVATIVE

Western Sydney University's Engineering programs are at the forefront of Australian education, research and development, preparing students to take on real world challenges and succeed. The programs are flexible, delivering a balance of theory, practice, broad subject choices and immersive industry projects. Think creatively in our state-of-the-art green facilities. We have expanded our majors base and are proudly delivering unparalleled education in Advanced Manufacturing and Materials and Sustainability, in addition to the existing Civil, Construction, Electrical, Mechanical and Robotic and Mechatronic programs. With our interconnected degrees in Engineering, ICT and Industrial Design, you can pursue exciting opportunities in diverse areas and learn how to address humanity's global goals and challenges. We have strong links with local, national and international organisations, providing students with exclusive access to a range of work-based study and placements. Our nationally recognised Industrial Design programs produce graduates highly proficient in human-centred design, new product development, and advanced computer aided design.

### CAREER OPPORTUNITIES

As a graduate, you may find employment in civil, construction, electrical, robotic and mechatronic engineering, manufacturing and utilities, commercial, medical and industrial product design, project management and consultancy, or industrial, commercial or residential development.

### OUR RANKING



# TOP 75

IN THE WORLD FOR CIVIL ENGINEERING\*

\* Academic Ranking of World Universities 2022

## ENGINEERING AND INDUSTRIAL DESIGN

DEGREE	CAMPUS	DURATION	LSR
B Engineering Advanced (Honours)	Parramatta City	4F/8P	83
B Engineering (Honours)	Parramatta City	4F/8P	70
	Penrith	4F/8P	70
B Engineering (Honours) (Advanced Manufacturing)	Parramatta City	4F/8P	70
	Penrith	4F/8P	70
B Engineering (Honours) (Civil Engineering)	Parramatta City	4F/8P	70
	Penrith	4F/8P	70
	Sydney City	4F	70
B Engineering (Honours) (Construction Engineering)	Parramatta City	4F/8P	70
	Penrith	4F/8P	70
B Engineering (Honours) (Electrical Engineering)	Parramatta City	4F/8P	70
	Penrith	4F/8P	70
	Sydney City	4F	70
B Engineering (Honours) (Materials Engineering)	Parramatta City	4F/8P	70
	Penrith	4F/8P	70
B Engineering (Honours) (Mechanical Engineering)	Parramatta City	4F/8P	70
	Penrith	4F/8P	70
	Sydney City	4F	70
B Engineering (Honours) (Robotics and Mechatronics Engineering)	Parramatta City	4F/8P	70
	Penrith	4F/8P	70
B Engineering (Honours) (Sustainable Engineering)	Parramatta City	4F/8P	70
	Penrith	4F/8P	70
B Engineering Science	Parramatta City	3F/6P	65
	Penrith	3F/6P	65
B Design and Technology	Parramatta City	3F/6P	60
B Industrial Design	Parramatta City	4F/8P	60
B Industrial Design (Honours)	Parramatta City	4F/8P	60

COMBINED DEGREES	CAMPUS	DURATION	LSR
B Engineering (Honours)/B Business	Bankstown City	5F/10P	70
	Campbelltown	5F/10P	70
	Parramatta City	5F/10P	70
	Penrith	5F/10P	70

Key: LSR = Lowest Selection Rank, B = Bachelor of, F = Full-time, P = Part-time.

Note: Successful applicants receiving credit for prior learning may be required to travel to different Western Sydney University campuses to complete the elements of their Engineering program.



### PROFILE

#### Patrick Kamlade

Graduated in April 2022, Bachelor of Engineering Advanced (Honours) (Mechanical)

"Higher education has changed my life by providing me with opportunities I couldn't have imagined...I had the opportunity to use high-end computer software and manufacturing equipment. A highlight of my degree (was) being a part of the team to develop the world's lightest solar car to have competed in the Bridgestone World Solar Challenge to date for its 2019 competition."



## BUILDING HEALTHIER COMMUNITIES, ONE PERSON AT A TIME

Throughout your study, you will gain valuable practical experience while having access to state-of-the-art facilities, dedicated exercise and sport science labs and sports venues. Our Health and Sport Sciences programs equip you for the important work of advancing human health. This degree focuses on the science that underpins physical activity and exercise, and how it can be used to design, implement and evaluate exercise programs. The Clinical Health Science programs cover Physiotherapy, Occupational Therapy, Paramedicine, Podiatry, Speech Pathology and Traditional Chinese Medicine. Further programs target Health Promotion, Health Services Management, Recreational Therapy, Clinical Sciences, Public Health, Sport and Exercise Science, Sport Development, and Health and Physical Education (HPE).

### CAREER OPPORTUNITIES

Depending on which program you undertake, you may find a career in the public or private sector, for example, in hospitals, ambulance services, the defence force, rehabilitation centres, insurance companies, schools, teaching, research, academia, large corporations, private practices and in government policy units. You may also work with athletes and sporting organisations, or work in a business as a personal trainer.

### OUR RANKING



**TOP 300**  
IN THE WORLD FOR  
PUBLIC HEALTH\*

\* Academic Ranking of World Universities 2022

## HEALTH AND SPORT SCIENCES

DEGREE	CAMPUS	DURATION	LSR
B Health Science (Health Promotion, Health Services Management, Recreational Therapy, Public Health or Clinical Sciences)*	Campbelltown	3F/6P	65
B Health Science (Health Promotion, Health Services Management, Recreational Therapy or Public Health)	Sydney City	3F	65
B Health Science (Sport and Exercise Science)	Campbelltown	3F	65
B Health and Physical Education	Penrith	3F/6P	65
B Occupational Therapy	Campbelltown	4F	82
B Paramedicine	Campbelltown	3F	90
B Physiotherapy	Campbelltown	4F	91
B Podiatric Medicine	Campbelltown	4F	75
B Speech Pathology	Campbelltown	4F	80
B Sport Development	Parramatta	3F/6P	65
B Traditional Chinese Medicine	Campbelltown	4F	70

COMBINED AND ONLINE DEGREES	CAMPUS	DURATION	LSR
B Health and Physical Education Pathway to Teaching (Secondary)/M Teaching (Secondary)**	Penrith	4.5-5F/EqP	70
B Health Science (Health Promotion, Recreational Therapy or Public Health)	Online	3F/D	65

Key: LSR = Lowest Selection Rank, B = Bachelor of, F = Full-time, P = Part-time.  
Note: ^ Double majors are available in the B Health Science degree (e.g. B Health Science (Health Promotion/ Public Health). Check the University Handbook for combinations.  
^ Degree may be fast-tracked in 2 years. Fast tracking of the degree is only available at Sydney City campus.  
\*\* To obtain teaching accreditation, a Master of Teaching must be completed following the Bachelor degree. Check the University Handbook for durations.

### PROFILE

**Maddie Poynter**  
(pictured opposite)  
Bachelor of Health Science  
(Paramedicine)

Maddie now works as a Paramedic for Ambulance Victoria. She says how proud she is to have attended the University and how grateful she is for the education she received.

"I have studied at three different universities (so) have been exposed to a substantial array of curriculum, tutors and education delivery (but) my experience at this University was unparalleled. I was provided opportunities to engage in practical development of critical skills

imperative in becoming a great paramedic, as well as having a bewildering amount of support from the teaching staff. I could not speak higher of the course coordination and educators.

I was able to engage in metropolitan and rural placements, be selected for an international placement in London, and publish a research paper as the lead author.

Finally, due to the high level of educational delivery and the expertise this degree has to offer, I am currently studying a Master of Health Science (Health Services Management) (at) none other than Western Sydney University."

### UNICLINIC




UniClinic, Western Sydney University's clinical facility, offers a unique in-house education facility for our undergraduate and postgraduate students. We are open to the public and offer a diverse selection of therapeutic health practices.

[westernsydney.edu.au/uniclinic](https://westernsydney.edu.au/uniclinic)



# HEALTH AND SPORT SCIENCES





# INFORMATION TECHNOLOGY (COMPUTING, DATA SCIENCE AND MATHEMATICS)



## EMPOWERING BUSINESSES AND INDIVIDUALS THROUGH TECHNOLOGY

In today's world, Information and Communications Technology (ICT) professionals have never been more in-demand. Our professionally recognised programs will prepare you to be at the forefront of e-business and internet technologies, digital industries, computer science, hardware and software development, games design and AI. We are the only Sydney university to offer degrees in Information and Communications Technology (Health Information Management) and Entrepreneurship (Games Design and Simulation). Our Information Technology (Computing) programs are tailor-made for you. Develop advanced programming skills, a thorough technical understanding of today's networked computer systems, or sound skills in the discipline of information systems security. Or choose a Bachelor of Entrepreneurship (Games Design and Simulation) – a degree that gives you firsthand experience in technology parks, incubators and innovation centres. Develop the mindset and skills required to be a high-impact entrepreneur. This program will equip you to be a game changer and help you forge your path to a technology start-up.

### CAREER OPPORTUNITIES

As a graduate, you may find employment in computer security, systems programming or engineering, network development, systems architecture, computer forensics, computer-aided engineering, information systems management, database and systems administration, health information management, games and mobile applications development or as a web developer.

## INFORMATION TECHNOLOGY

DEGREE	CAMPUS	DURATION	LSR
B Computer Science (Advanced)	Parramatta	3F	95
	Penrith	3F	95
B Computer Science Specialise in: Artificial Intelligence, Networked Systems, Systems Programming, Cyber Security	Parramatta	3F	80
	Penrith	3F	80
B Data Science	Parramatta	3F/6P	75
B Information and Communications Technology (Advanced)	Campbelltown	3F	95
	Parramatta	3F	95
	Penrith	3F	95
B Information and Communications Technology	Campbelltown	3F	65
	Parramatta	3F	65
	Penrith	3F	65
	Sydney City*	3F	65
B Information and Communications Technology (Health Information Management)	Campbelltown	3F	70
	Parramatta	3F	70
	Penrith	3F	70
B Information Systems Advanced	Parramatta	3F	95
B Information Systems	Parramatta	3F	70
	Sydney City*	3F	70
B Entrepreneurship (Games Design and Simulation)	Parramatta	3F/6P	65
	Penrith	3F/6P	65
B Mathematics	Campbelltown	3F/6P	85
	Parramatta	3F/6P	85
	Penrith	3F/6P	85

COMBINED DEGREES	CAMPUS	DURATION	LSR
B Information and Communications Technology/B Arts	Parramatta	4F	70
B Information and Communications Technology/B Business	Bankstown City	4F	70
	Campbelltown	4F	70
	Parramatta	4F	70
B Information and Communications Technology/B Business (Accounting)	Campbelltown	4F	70
	Parramatta	4F	70
B Information and Communications Technology/B Laws	Campbelltown	5F	90
	Parramatta	5F	90
B Information Systems Advanced/B Business	Campbelltown	4F/8P	95
	Parramatta	4F/8P	95
B Information Systems/B Business	Campbelltown	4F/8P	70
	Parramatta	4F/8P	70
B Information Systems Advanced/B Laws	Campbelltown	5F/10P	95
	Parramatta	5F/10P	95
B Information Systems/B Laws	Campbelltown	5F/10P	90
	Parramatta	5F/10P	90

Key: LSR = Lowest Selection Rank, B = Bachelor of, F = Full-time, P = Part-time.

Note: \* Sydney City campus offers the following Information and Communications Technology majors: Mobile Computing and Networking. Information Systems majors: Big Data, Mobile Computing and Networking.



BE EMPOWERED TO MAKE  
A POSITIVE CHANGE

Western Sydney University’s Law programs offer a unique alternative to more traditional law schools, with community law activities that give you real-world experience. Our Law students have the exceptional learning opportunity of working with the Western Sydney University Justice Clinic alongside practising lawyers and academics on client cases, law reform and access to justice projects. The Clinic also operates the Student Legal Service and runs placement and internship subjects for Western students. Experiences like this will equip you with the tools to forge a career as a world-class legal professional. Our lecturers will challenge, stretch and inspire you, and our connection with prominent, respected professional networks will set you up for career success.

CAREER OPPORTUNITIES

In our Law programs, special emphasis is placed on professional legal skills. As a graduate, you may find employment in legal practice as a solicitor or barrister, or roles in the banking and finance sector, accounting firms and management consultancies, corporate management, education and publishing, government departments and regulatory authorities, marketing, human resources and telecommunication industries.

LAW

DEGREE	CAMPUS	DURATION	LSR
B Laws (Graduate entry)	Campbelltown	3F/6P	NA
	Parramatta	3F/6P	NA
B Laws (Non-graduate entry)	Campbelltown	4F/8P	90
	Parramatta	4F/8P	90
Juris Doctor (JD)	Parramatta	3F/6P	NA

COMBINED DEGREES	CAMPUS	DURATION	LSR
B Accounting/B Laws	Campbelltown	5F/10P	90
	Parramatta	5F/10P	90
B Arts (Psychology)/B Laws	Campbelltown	5.5F/11P	90
	Parramatta	5.5F/11P	90
B Arts/B Laws	Campbelltown	5F/10P	90
	Parramatta	5F/10P	90
B Business/B Laws	Campbelltown	5F/10P	90
	Parramatta	5F/10P	90
B Communication/B Laws	Campbelltown	5F/10P	90
	Parramatta	5F/10P	90
B Construction Management Studies/B Laws	Campbelltown	5F/10P	90
	Parramatta	5F/10P	90
B Criminal and Community Justice/B Laws	Campbelltown	5F/10P	90
	Parramatta	5F/10P	90
B Criminology/B Laws	Campbelltown	5F/10P	90
	Parramatta	5F/10P	90
B Information and Communications Technology/B Laws	Campbelltown	5F	90
	Parramatta	5F	90
B Information Systems Advanced/B Laws	Campbelltown	5F/10P	95
	Parramatta	5F/10P	95
B Information Systems/B Laws	Campbelltown	5F/10P	90
	Parramatta	5F/10P	90
B International Studies/B Laws	Campbelltown	5F/10P	90
	Parramatta	5F/10P	90
B Science/B Laws	Campbelltown	5F/10P	90
	Parramatta	5F/10P	90
B Social Science/B Laws	Campbelltown	5F/10P	90
	Parramatta	5F/10P	90

Key: LSR = Lowest Selection Rank, B = Bachelor of, F = Full-time, P = Part-time, N/A = Not applicable; not based on the ATAR; or the program is not offered to current Year 12 applicants or no offers were made to Year 12 applicants in these rounds.



PROFILE

Duc-Huy Johnny Nguyen

Graduate  
Bachelor of Business and Commerce (Advanced Business Leadership)/Bachelor of Laws

“Across my entire time at University, my greatest achievement has been the relationships I’ve built and the people I’ve met...across extremely diverse groups — academically, culturally, professionally... Growing up in a socioeconomically disadvantaged suburb I had a very limited worldview. Higher education was my “foot in the door” to the professional world. The worlds of business, finance and law were foreign concepts until I began studying at University.”



# LAW



# MEDICINE



## BE A LIFE SAVER

Advances in medicine rely on advances in knowledge. It's why over 10 years ago Western created a new kind of School of Medicine. Since then, we've seen more than 600 graduates enter the medical profession and make a difference. In 2021, Western joined with Charles Sturt in making this program available on both sides of the Blue Mountains. Whether you study in Campbelltown or Orange you will have access to state-of-the-art research facilities. The Clinical Schools where you will be based, along with your chosen campus, are brand new and purpose-built specifically for our students. Four themes run throughout this program: patient care, health in the community, personal and professional development, and the scientific basis of medicine. Clinical learning begins from the first weeks and you will work with and learn from real patients. You will be supported by small-group collaborative learning at the bedside and on campus that continues throughout the program. Applying the biomedical sciences to clinical problems, you will acquire and practise clinical and research skills as you build your portfolio of evidence of your learning. You will extend and apply your knowledge and practical skills in full-time clinical and community placements (including in Aboriginal Medical Services), complete a scholarly project and build your clinical experience through placements in speciality and subspecialty medicine.

## OUR RANKING



# TOP 175

IN THE WORLD FOR MEDICINE\*

\* Clinical, Pre-Clinical and Health:  
Times Higher Education (THE) World  
University Rankings by Subject 2022

## MEDICINE

DEGREE	CAMPUS	DURATION	LSR
Doctor of Medicine	Campbelltown	5F	See below

### ADMISSION CRITERIA

Greater Western Sydney Applicants	Campbelltown	5F	93.5
Rural/Remote Applicants	Campbelltown/ Orange	5F	91.5
Other Applicants	Campbelltown/ Orange	5F	95.5

UCAT Undergraduate Clinical Admissions Test  
Unless you are of Aboriginal or Torres Strait Islander descent, all domestic applicants must sit the UCAT.

Key: LSR = Lowest Selection Rank, F = Full-time

### CAREER OPPORTUNITIES

As a graduate you won't just be highly skilled, you'll be highly prepared for your internship and have a range of career paths to choose from, including medical practice, medical research, administration

or medical teaching. Graduates are eligible for registration by the Australian Health Practitioner Regulation Agency (AHPRA) and may be able to apply for registration in overseas countries.

## APPLICATION PATHWAY TO MEDICINE

### DOCTOR OF MEDICINE (MD)

Western Sydney University offers a fully-accredited five-year undergraduate medical program based in Greater Western Sydney with placements throughout NSW. Graduates are eligible to apply for medical intern (junior doctor) positions in Australia. The Joint Program in Medicine, delivered in partnership with Charles Sturt University, creates the opportunity to undertake the medical program in rural and regional NSW, based at Orange, NSW.

### Domestic Applicants

Domestic applicants may apply as Greater Western Sydney, Rural, Aboriginal and Torres Strait Islander, or General applicants. Selection is based on performance in an aptitude test, an interview and academic capability. At Western, we run multi-station mini interviews (MMI). This is a series of stations to test if you have the qualities to become a great doctor. The purpose of the MMI is to assess non-cognitive qualities important to patients and communities, and which are best assessed in person, rather than through an online test.

Domestic applicants (Australian citizens and permanent residents and NZ citizens) must:

- Register for and sit the Undergraduate Clinical Admissions Test (UCAT)
- Submit a UAC application by 29 September prior to the year of intended

program start date and include the MD course code as a preference

- On invitation, attend an interview in Sydney or Orange held in late November/early December.
- See [westernsydney.edu.au/mdapplicants](https://westernsydney.edu.au/mdapplicants)

For details, including program structure and subjects, visit [westernsydney.edu.au/future/study/courses/undergraduate/doctor-of-medicine](https://westernsydney.edu.au/future/study/courses/undergraduate/doctor-of-medicine)

### Aboriginal and Torres Strait Islander Applicants

There is a different pathway process for those who apply as an Aboriginal or Torres Strait Islander applicant, as you are not required to sit the UCAT.

For more detailed information on Aboriginal and Torres Strait Islander selection procedures, visit [westernsydney.edu.au/indigenousfuturedr](https://westernsydney.edu.au/indigenousfuturedr) or email [IndigenousFutureDr@westernsydney.edu.au](mailto:IndigenousFutureDr@westernsydney.edu.au)

### International Applicants

For information on international applications, visit [westernsydney.edu.au/international](https://westernsydney.edu.au/international)

Alternatively, call the Course Information Centre on **1300 897 669** or email [study@westernsydney.edu.au](mailto:study@westernsydney.edu.au)



# NURSING AND MIDWIFERY



## CARE AND COMPASSION

Western Sydney University is home to some of Australia's best nursing and midwifery programs. Nurses and midwives are champions of change, making a difference through safety and providing quality person and women-centred care and safety. Our professionally accredited preregistration programs are designed with the vision of preparing graduates to be the future healthcare leaders of the western Sydney region and beyond, supporting the community through innovative nursing and midwifery practice. These programs offer hands-on experience at some of Sydney's biggest hospitals and healthcare facilities giving you a distinct advantage for your future career after university. All programs are underpinned by a primary health care philosophy supported by a flexible learning approach and a premium on-campus experience with contemporary simulation facilities and technology-enabled learning spaces. We are internationally renowned for producing graduates who enjoy very high employment rates, particularly in the western Sydney region.

### CAREER OPPORTUNITIES

As a nursing graduate, you may work in acute care hospitals, aged care services, child and adolescent health, community health, medical practice nursing, disability services, emergency or trauma units, justice health, mental health services, forensics, drug and alcohol, occupational health, oncology, operating theatres, palliative care, rehabilitation services, nursing education and health administration.

As a registered midwifery graduate, you may work in a range of maternity services within community settings and private and public hospitals in metropolitan, rural and remote areas. These include midwifery group practice, team midwifery, caseload midwifery, homebirth, birth centres, antenatal clinics, postnatal wards, birthing units, postnatal clinics and community midwifery services. Midwives also work in policy, research, education and management.

## NURSING AND MIDWIFERY

DEGREE	CAMPUS	DURATION	LSR
B Nursing	Campbelltown	3F	70
	Hawkesbury	3F	65
	Parramatta	3F	70
	Liverpool City	3F	70
B Nursing (Enrolled Nurse Pathway)	Campbelltown	2F	NA
	Hawkesbury	2F	NA
	Parramatta	2F	NA
	Liverpool City	2F	NA
B Midwifery	Parramatta	3F	NA
Master of Nursing Practice (Preregistration)	Hawkesbury	2F	N/A
	Parramatta	2F	N/A

Key: LSR = Lowest Selection Rank, B = Bachelor of, F = Full-time, N/A = Not applicable; not based on the ATAR; or the program is not offered to current Year 12 applicants or no offers were made to Year 12 applicants in these rounds.

Notes: Duration takes into account Credit for Prior Learning allowed.

An online Bachelor of Nursing is available via WSUOnline.

Admission to the midwifery score is based on ATAR and interview ranking.

Visit: [online.westernsydney.edu.au/online-courses/nursing-midwifery/bachelor-of-nursing](https://online.westernsydney.edu.au/online-courses/nursing-midwifery/bachelor-of-nursing)

### CLINICAL PRACTICE UNITS



Western's clinical practice facilities, called Clinical Practice Units (CPUs) are designed to simulate a modern clinical setting. They are equipped with contemporary clinical simulation technology to support your learning.

### OUR RANKING



## TOP 50

IN THE WORLD FOR NURSING\*

\* QS World University Rankings by Subject 2022



# PSYCHOLOGY



## UNLOCK THE SECRETS OF THE MIND

Studying Psychology at Western Sydney University will open your mind to a world of possibilities. We are committed to world-leading psychological research and to training the next generation of psychology practitioners, researchers and experts. Western ranks among the world's top universities for Psychology and you will be taught by internationally recognised scholars, many of whom are also practising psychologists. Our graduates have a sophisticated understanding of human behaviour in all its complexity, coupled with an ability to think analytically. Our Psychology programs emphasise the important role that psychology has in all aspects of life, preparing you to make a positive difference to health, work, education, relationships and family life. This degree will help you understand how the mind works, what makes people do the things they do and how you can use this knowledge to help others to lead their best lives.

### CAREER OPPORTUNITIES

Psychology touches on all areas of human behaviour, and graduates develop skills that are highly sought after by employers, including critical thinking, problem solving, empathy and teamwork. You have the opportunity to study electives from other disciplines, including health, business and social sciences. These will provide you with further career opportunities in today's ever-changing world. With further education or specialised training, psychology graduates can also pursue a variety of careers in fields that span counselling and psychotherapy, healthcare, education, research and business. For suitable graduates, our accredited psychology programs also provide a pathway towards further training and registration as a professional or clinical psychologist.

## PSYCHOLOGY

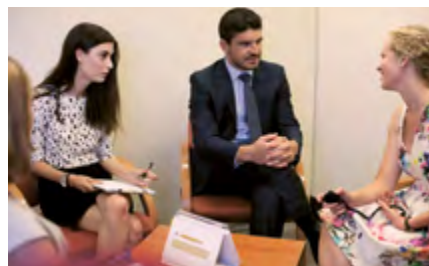
DEGREE	CAMPUS	DURATION	LSR
B Psychology (Honours)*	Bankstown City	4F/8P	75
	Parramatta	4F/8P	75
	Penrith	4F/8P	75
B Psychological and Social Sciences	Bankstown City	3F/6P	70
	Parramatta	3F/6P	70
	Penrith	3F/6P	70

COMBINED DEGREES	CAMPUS	DURATION	LSR
B Arts (Psychology)/B Laws	Campbelltown	5.5F/11P	90
	Parramatta	5.5F/11P	90

Key: LSR = Lowest Selection Rank, B = Bachelor of, F = Full-time, P = Part-time.

Note: \* B Psychological Science 3rd year exit point from the B Psychology (Honours) for students not eligible for Honours.

### PSYCHOLOGY CLINIC



The Western Sydney University Psychology Clinic provides low-cost psychological treatment and testing services to the community. Staffed by provisionally registered psychologists currently undertaking postgraduate training, they are supervised by fully accredited and experienced clinical psychology supervisors.

[westernsydney.edu.au/clinic](https://westernsydney.edu.au/clinic)

### OUR RANKING



## TOP 250

IN THE WORLD FOR PSYCHOLOGY\*

\* QS World University Rankings 2022



## A VOYAGE OF DISCOVERY

Western Sydney University offers highly advanced teaching and research facilities and laboratories to provide you with valuable real-world experiences. Whether you want to improve health and medical treatments, create a more sustainable future or teach the next generation, your journey starts here. With a range of science disciplines to choose from, you can explore your passion and major in an area relevant to your career goals. The science facilities span three campuses: Campbelltown – specialising in specific areas like human health sciences, including anatomy laboratories and the nuclear magnetic resonance facility; Parramatta – our new science building that houses teaching laboratories as well as research laboratories for molecular bioscience and chemistry; and Hawkesbury – offering a food pilot plant and modern industrial kitchens that support students enrolled in our Innovative Foods and/or Human Nutrition majors. Hawkesbury campus is also home to a dedicated Crime Scene House used by students who are enrolled in the Forensic Science major. It also has a strong focus on ecology and animal sciences and is home to the Hawkesbury Institute for the Environment. With exceptional teachers, equipment and facilities, our students have everything they need to become world-class scientists.

### OUR RANKINGS



**TOP 3**

IN AUSTRALIA FOR ECOLOGY\*



**TOP 20**

IN THE WORLD FOR ECOLOGY\*



**TOP 100**

IN THE WORLD FOR AGRICULTURAL SCIENCES\*

\* Academic Ranking of World Universities 2022

## SCIENCES

DEGREE	CAMPUS	DURATION	LSR
B Advanced Medical Science Major in: Anatomy and Physiology, Biomedical Science, Human Nutrition	Campbelltown	3F/6P	85
	Parramatta	3F/6P	85
B Medical Science Major in: Anatomy and Physiology, Biomedical Science, Human Nutrition	Campbelltown	3F/6P	65
	Parramatta	3F/6P	65
B Advanced Science Specialise in: AgriFoods, Animal Science, Applied Physics, Biology, Chemistry, Environmental Health, Forensic Science, Innovative Foods, Sustainable Environmental Futures, Zoology	Campbelltown	3F/6P	85
	Hawkesbury	3F/6P	85
	Parramatta	3F/6P	85
B Science Specialise in: AgriFoods, Animal Science, Applied Physics, Biology, Chemistry, Environmental Health, Forensic Science, Innovative Foods, Sustainable Environmental Futures, Zoology	Campbelltown	3F/6P	65
	Hawkesbury	3F/6P	60
	Parramatta	3F/6P	65
B Science – (Pathway to Teaching Primary/Secondary)*/M Teaching (Primary) or M Teaching (Secondary)	Campbelltown	4.5-5F/EqP	70
	Hawkesbury	4.5-5F/EqP	70
	Parramatta	4.5-5F/EqP	70

COMBINED DEGREES	CAMPUS	DURATION	LSR
B Science/B Arts	Parramatta	4F/8P	65
B Science/B Business	Campbelltown	4F	65
	Hawkesbury	4F	65
	Parramatta	4F	65
B Science/B International Studies	Parramatta	4F/8P	65
B Science/B Laws	Campbelltown	5F/10P	90
	Parramatta	5F/10P	90

Key: LSR = Lowest Selection Rank, B = Bachelor of, F = Full-time, P = Part-time.

Note: \* To obtain teaching accreditation, a Master of Teaching must be completed following the Bachelor degree. Check the University Handbook for durations.

### CAREER OPPORTUNITIES

Depending on the majors and electives chosen, your career opportunities include roles in government, research, forensics, patents, food science, quality control, universities, product development, environmental analysis, scientific

instrumentation, medical laboratories and technical management. You will also have the option of becoming a secondary school science or mathematics teacher, or you might pursue a high-level research career through a Master of Research.



### PROFILE

**Alisha Ouch**

Bachelor of Medical Science/Bachelor of Applied Leadership and Critical Thinking

“I came from a background where I was the first person in my family to attend university. I was able to secure an internship at the world-leading Ingham Institute. It’s a fantastic opportunity that was offered by the University. The community and academics at Western are really helpful and have guided me throughout my journey. It’s been an amazing and rewarding experience and I now plan to pursue my PhD.”



# SCIENCES



# SOCIAL WORK AND SOCIAL SCIENCE



## IMPROVE WELLBEING AND QUALITY OF LIFE

Studying a Social Work degree at Western Sydney University will train you to become a skilled worker in social and community-focused programs. If you have always cared about others, this degree gives you an opportunity to make a real difference to nurture people's self-reliance and problem-solving abilities. Through a mix of world-class research and theory, Western's Bachelor of Social Work gives you the valuable skills and knowledge you need to help people deal with personal and social problems, either directly or by planning and carrying out programs that will benefit groups or communities. It prepares you to enter the workforce in a range of sectors, including private or government agencies, welfare support organisations, community groups or in health.

## EXPAND YOUR KNOWLEDGE OF THE SOCIAL WORLD

Study a Social Science degree at Western Sydney University and learn through theory, research and practical application. If you are interested in how people interact with each other and with their environment, as well as how societies change over time, this is the degree for you. Gain an in-depth understanding of the complex, culturally diverse and dynamic world we live in. Expand your knowledge of people, culture, society, the criminal mind or our justice system, or make the internet a safer place. Take on humanitarian aid work or engage with the community in local sustainable development projects. Built on flexibility and choice with a range of offerings in social sciences, this program provides the opportunity for you to focus on your preferred areas of interest. Choose your own majors and minors from Child and Community, Geography and Urban Studies, Tourism, Events and Planning, Peace and Development Studies, Sociology and Anthropology, and Criminology and Criminal Justice. Create a degree as specialised or as broad as your desired career path.

## SOCIAL WORK AND SOCIAL SCIENCE

DEGREE	CAMPUS	DURATION	LSR
<b>B Social Science (Advanced)</b> <i>Specialise in:</i> Anthropology, Child and Community, Criminology and Criminal Justice, Disability Studies, Geography and Urban Studies, Heritage and Tourism, Peace and Development Studies, Sociology	Liverpool City	3F/6P	95
	Parramatta	3F/6P	95
	Penrith	3F/6P	95
<b>B Social Science</b> <i>Specialise in:</i> Anthropology, Child and Community, Criminology and Criminal Justice, Disability Studies, Geography and Urban Studies, Heritage and Tourism, Peace and Development Studies, Sociology	Liverpool City	3F/6P	60
	Parramatta	3F/6P	60
	Penrith	3F/6P	60
	Sydney City*	3F	60
<b>B Social Work</b>	Liverpool City	4F/8P	85
	Parramatta	4F/8P	85
<b>B Humanitarian and Development Studies</b>	Parramatta	3F/6P	60
	Penrith	3F/6P	60
<b>B Psychological and Social Sciences</b>	Bankstown City	3F/6P	70
	Parramatta	3F/6P	70
	Penrith	3F/6P	70

COMBINED DEGREES	CAMPUS	DURATION	LSR
<b>B Arts/B Social Science</b>	Bankstown City	4F/8P	65
	Parramatta	4F/8P	65
	Penrith	4F/8P	65
<b>B Criminal and Community Justice/B Social Work</b>	Liverpool City	5F/10P	85
<b>B International Studies/B Social Science</b>	Bankstown City	4F/8P	65
	Parramatta	4F/8P	65
<b>B Social Science/B Laws</b>	Campbelltown	5F/10P	90
	Parramatta	5F/10P	90

Key: LSR = Lowest Selection Rank, B = Bachelor of, F = Full-time, P = Part-time.

Note: For more Social Science degrees look under Policing, Psychology and Tourism, Events and Urban Planning areas of study. Check the University Handbook for further information.

\* Sydney City students can only currently undertake the Criminology and Criminal Justice major.

### CAREER OPPORTUNITIES

As a graduate, you may find a career in development and peacekeeping agencies, international aid, police work, investigative and intelligence agencies, organisations undertaking cyber security,

policy development, analysis and social research, social and community planning organisations, heritage and tourism organisations and centres, and welfare and community development agencies.



## TEACH THE NEXT GENERATION

Our Education and Pathways to Teaching degrees will give you the foundation you need to become a great teacher and one your students will remember. In our Pathways to Teaching degrees you will have opportunities to develop specialist knowledge and skills which you build on in a graduate teaching qualification after the completion of your undergraduate degree. The practical experience you gain in our teaching programs will also give you the confidence to succeed from your first day of teaching. If you have a desire to make a difference and a love of learning, maybe a passion for a certain subject, and want a sense of purpose in your life and work, becoming a teacher can be a very rewarding career. If you aspire to make a positive impact on the lives of students and help shape the next generation then an Education or Pathway to Teaching qualification will set you up for success.

### DEGREE FOR ABORIGINAL AND TORRES STRAIT ISLANDER PEOPLES

Western Sydney University is committed to providing higher education pathways for Aboriginal and Torres Strait Islander peoples and contributing to the process of reconciliation. The University offers study by block mode – Bachelor of Education (Primary) Aboriginal and Torres Strait Islander Education. The block mode model is designed to help students remain in their community so they can fulfil their family, career, cultural and social responsibilities. Studying a block mode program requires students to attend residential on-campus visits each year, lasting between one and three weeks. Travel, accommodation and meal costs to attend residentials are funded for Abstudy approved students.

For more information, visit [westernsydney.edu.au/atsieducation](https://westernsydney.edu.au/atsieducation)

### OUR RANKING



**TOP 250**

IN THE WORLD FOR EDUCATION\*

\* QS World University Rankings 2023

## TEACHING AND EDUCATION

DEGREE	CAMPUS	DURATION	LSR
B Education (Primary)	Bankstown City	4F/8P	70
B Education (Early Childhood)	Campbelltown	4F/8P	65

DEGREE FOR ABORIGINAL AND TORRES STRAIT ISLANDER PEOPLES	CAMPUS	DURATION	LSR
B Education (Primary) – Aboriginal and Torres Strait Islander Education	Bankstown City	4F	NA

DEGREES – PATHWAY TO TEACHING*	CAMPUS	DURATION	LSR
B Arts (Pathway to Teaching Early Childhood/ Primary)/M Teaching (Birth-5 Years/Birth-12 Years)	Bankstown City	4.5-5F/EqP	60
	Parramatta	4.5-5F/EqP	60
	Penrith	4.5-5F/EqP	60
B Arts (Pathway to Teaching Early Childhood/ Primary)/M Teaching (Birth-5 Years/Birth-12 Years) Diploma pathway	Bankstown City	3.5-4F/EqP	NA
	Parramatta	3.5-4F/EqP	NA
	Penrith	3.5-4F/EqP	NA
B Arts (Pathway to Teaching Primary)/M Teaching (Primary)	Bankstown City	4-4.5F/EqP	60
	Parramatta	4-4.5F/EqP	60
	Penrith	4-4.5F/EqP	60
B Arts (Pathway to Teaching Secondary)/M Teaching (Secondary)	Bankstown City	4-4.5F/EqP	60
	Parramatta	4-4.5F/EqP	60
	Penrith	4-4.5F/EqP	60
B Business (Pathway to Teaching Secondary)/ M Teaching (Secondary)	Bankstown City	4.5-5F/EqP	70
	Campbelltown	4.5-5F/EqP	70
	Parramatta City	4.5-5F/EqP	70
B Graphic Design (Pathway to Teaching Secondary)/ M Teaching (Secondary)	Parramatta	4.5-5F/EqP	60
B Health and Physical Education Pathway to Teaching (Secondary)/M Teaching (Secondary)	Penrith	4.5-5F/EqP	70
B Science – (Pathway to Teaching Primary/ Secondary)/M Teaching (Primary) or M Teaching (Secondary)	Campbelltown	4.5-5F/EqP	70
	Hawkesbury	4.5-5F/EqP	70
	Parramatta	4.5-5F/EqP	70

Key: LSR = Lowest Selection Rank, B = Bachelor of, F = Full-time, P = Part-time, N/A = Not applicable; not based on the ATAR; or the program is not offered to current Year 12 applicants or no offers were made to Year 12 applicants in these rounds.

Note: To obtain teaching accreditation, a Master of Teaching must be completed following the Pathway to Teaching Bachelor degree. Check the University Handbook for further information.

### CAREER OPPORTUNITIES

As a graduate, you can work as a teacher in an early childhood centre or a government or non-government school or college relevant to the postgraduate qualification and the majors studied in your undergraduate degree. This includes roles as an early childhood teacher, a

primary school teacher, a secondary school teacher, an education field officer in a variety of industries including sport, welfare, community education, and also in training and development facilities in industry.



# TEACHING AND EDUCATION



# TOURISM, EVENTS AND URBAN PLANNING



## TRAVEL THE WORLD. CHANGE THE WORLD

Western Sydney University's Tourism, Event and Urban Planning programs are among the finest in Australia. These programs offer a balance of theory and practical field studies, broad subject choices, flexible program structures, industry-based projects and placements, and local and international work experience opportunities. As a graduate, you will enter the workforce uniquely equipped with both specialist cultural and managerial knowledge, and a wealth of practical experience. The Bachelor of Planning pathway to the Master of Urban Management and Planning is for those students interested in a career in urban, social or cultural planning. Or study Tourism Management so you can build a career in festival and event management or work in destination marketing, cultural, tourism and leisure industry development or planning consultancies.

### CAREER OPPORTUNITIES

If you are interested in a career in urban, social or cultural planning, the Bachelor of Planning pathway to the Master of Urban Management and Planning is for you. This program equips students to take leadership roles in urban management, strategic planning and policy development.

As a graduate of Tourism and Event Management, you may seek to build a career in festival and event management and programming, leisure and tourism policy development, tour operations, destination marketing, visitor attractions management, outdoor recreation, hospitality provision, cultural, tourism and leisure industry development, state and federal government departments concerned with urban and regional affairs, or planning consultancies.

### OUR RANKING



# TOP 200

IN THE WORLD FOR SOCIOLOGY\*

\*QS World University Rankings 2023

## TOURISM AND EVENT MANAGEMENT AND URBAN PLANNING

DEGREE	CAMPUS	DURATION	LSR
B Tourism and Event Management	Parramatta	3F/6P	60
B Social Science (Geography and Urban Studies)	Parramatta	3F/6P	60
	Penrith	3F/6P	60
B Social Science (Heritage and Tourism)	Parramatta	3F/6P	60
B Planning (Pathway to M Urban Management and Planning)	Parramatta	3F/6P	60
	Penrith	3F/6P	60

Key: LSR = Lowest Selection Rank, B = Bachelor of, M = Master of, F = Full-time, P = Part-time



### PROFILE

#### Campbelltown Mayor, Cr George Griess

PhD Graduate (April 2023) in Geography and Urban Planning at the School of Social Sciences (supervisor and mentor – Associate Prof Awais Piracha).

Cr Griess has recently submitted his thesis focusing on urban town planning and will be graduating in April 2023. In celebration of completing his PhD, George held an event for charity raising money to cut off his long ponytail that he had been growing since the day he began his PhD studies at Western. He raised over \$11,000 for the Macarthur Cancer Therapy Centre at Campbelltown Hospital.



# ONLINE DEGREES

Our online degrees provide you with the opportunity to study from anywhere, at any time, while still accessing all the support you need to succeed in your studies. Study materials, academic matters, assessments and graduation will all be handled by the University.

Offered in either full- or part-time mode, the programs we offer will open up career opportunities in the areas of Business, Communication, Public Health, Health Promotion and Recreational Therapy. For more detailed information about the program structure and subjects visit [westernsydney.edu.au/online](https://westernsydney.edu.au/online)

## MORE FLEXIBLE STUDY OPTIONS

### SUMMER SESSION

If you would like more flexibility to plan and manage your study around your lifestyle and the many demands on your time, our Summer session offers an optional learning period between December and February.

With Summer session, you can complete your degree your way, get ahead in your program so you can graduate and start earning a salary sooner, take a session off to travel or work full-time and catch up on one or two subjects over summer, or lighten your study load by spreading out your subjects across the year.

### FLEXIBLE LEARNING

Our Sydney City campus offers flexible sessions, you can start in February, June or October.

For more information, visit [westernsydney.edu.au/city](https://westernsydney.edu.au/city)



## MICROCREDENTIALS

### Learn emerging skills for a changing workplace

Microcredentials are industry-relevant, university certified courses which enable you to advance your skillset or try something new without committing to a full multi-year degree.

Drive your career and stand out in a competitive job market, learning practical and tangible skills, while tackling real-world problems.

With Microcredentials you can learn the skills that will benefit you most now while studying in your own time and at your own pace to fit within other priorities.

For more information and a list of Microcredentials available, visit [westernsydney.edu.au/future/study/courses/altcreds](https://westernsydney.edu.au/future/study/courses/altcreds)

## ONLINE DEGREES

DEGREE	CAMPUS	DURATION	LSR
B Communication	Online	3F/6P	75
B Health Science (Public Health)	Online	3F	70
B Health Science (Health Promotion)	Online	3F	70
B Health Science (Recreational Therapy)	Online	3F	70

## CONCURRENT DEGREES

These degrees are not stand-alone but have been designed to be undertaken with any undergraduate degree at Western. The duration for these concurrent degrees may vary depending on the duration of your primary Western degree.

DEGREE	CAMPUS	LSR
B Applied Data Science	Parramatta	N/A
B Creative Leadership	Parramatta	N/A
B Entrepreneurship	Parramatta	N/A

Note: These degrees are designed to be taken concurrently or upon completion of another Western degree. Students must be eligible to graduate from their primary degree in order to be granted credit for prior learning in these degrees.



# Western *Success*

## BE YOUR ALL

At Western, we pride ourselves on seeing you for all you are. All your passions. All your drive. All your potential. With Western Success, our pioneering student support program, we're here to empower you and help you achieve all that's possible during your journey at Western.

With peer-to-peer advice on how to make the most of every moment, Western Success connects you with people who have been in your shoes. Our dedicated team of Student Advisors can help you feel more a part of our vibrant campus community through social initiatives like MATES and WESTERNLife, or give you access to resources and tools to succeed academically via our PASS, MESH and Study Smart programs. They can also connect you to support services for mental health and general wellbeing to help you thrive or connect with support when you need it most.

Available to you throughout your time at Western, we're here to prime you for success and help you achieve all you can on campus and off, in your degree and beyond.

The transition to university is one filled with boundless opportunities, and we want to help you tap into everything on offer and help you reach your potential. We want to see you succeed. As the Uni that cares more, we're here with you every step of the way to help you do just that.

We hope your time at Western sees you embracing a community that cares about you and your journey. A journey that will be filled with support, success and achievement.

---

### PICTURED

Gemimah Omari  
Graduate  
Bachelor of Social Science (Psychology)  
JD Lovich Scholarship recipient



# PATHWAYS





**The College is a pathway to success. Forget traditional journeys to university. This doesn't have to be the story.**

Now, picture smaller class sizes so you get more attention from your teachers. And, imagine studying over the same time span so there's no lost time. Well, this what The College offers. One of the many advantages of studying at The College is the direct entry arrangement with Western.

Successful completion of the 12-month Diploma component of the Integrated Diploma/Bachelor program means you then progress into the Bachelor component, so there's no time lost.

The 16-month Extended Diploma program covers additional preliminary subjects to prepare you for success in your tertiary studies. Upon successful completion of these programs, you'll have the opportunity to enter into the second year of the corresponding university degree.

The College also offers Undergraduate Preparation Programs. Upon successful completion, you will be able to apply for a place in the first year of a corresponding undergraduate degree at Western. So, if you like the sound of a well-supported environment to ensure your success, look no further than The College.

HECS-HELP and FEE-HELP loans are also available to eligible students studying a Diploma or Undergraduate Preparation Program.

For more information, visit [westernsydney.edu.au/thecollege](https://westernsydney.edu.au/thecollege)

## ARTS

PROGRAM	INTAKE	LOCATION	DURATION	LSR
D Arts/B Arts	Mar/Jul	Bankstown City	3 terms-12 months	55
	Mar/Jul	Nirimba	3 terms-12 months	55
D Arts/B Arts (Pathway to Teaching Primary)	Mar/Jul	Bankstown City	3 terms-12 months	55
	Mar/Jul	Nirimba	3 terms-12 months	55
D Arts/B Arts (Pathway to Teaching Secondary)	Mar/Jul	Bankstown City	3 terms-12 months	55
	Mar/Jul	Nirimba	3 terms-12 months	55
D Arts/B Arts (Pathway to Early Childhood/Primary)	Mar/Jul	Bankstown City	3 terms-12 months	55
	Mar/Jul	Nirimba	3 terms-12 months	55
D Arts/B Arts (Interpreting and Translation)	Mar/Jul	Bankstown City	3 terms-12 months	55
	Mar/Jul	Nirimba	3 terms-12 months	55
D Arts Extended – Arts	Mar/Oct	Bankstown City	4 terms-16 months	O/A
	Mar/Oct	Nirimba	4 terms-16 months	O/A
D Arts Extended – Interpreting and Translation	Mar/Oct	Bankstown City	4 terms-16 months	O/A
	Mar/Oct	Nirimba	4 terms-16 months	O/A
D Arts Extended – Pathway to Teaching Primary	Mar/Oct	Bankstown City	4 terms-16 months	O/A
	Mar/Oct	Nirimba	4 terms-16 months	O/A
D Arts Extended – Pathway to Teaching Secondary	Mar/Oct	Bankstown City	4 terms-16 months	O/A
	Mar/Oct	Nirimba	4 terms-16 months	O/A
D Arts Extended – Pathway to Early Childhood/Primary	Mar/Oct	Bankstown City	4 terms-16 months	O/A
	Mar/Oct	Nirimba	4 terms-16 months	O/A

## BUSINESS

PROGRAM	INTAKE	LOCATION	DURATION	LSR
D Business/B Business	Mar/Jul/Oct	Bankstown City	2 terms-8 months	60
	Mar/Jul/Oct	Parramatta City	2 terms-8 months	60
D Business (Standard)/B Business	Mar/Jul	Bankstown City	3 terms-12 months	55
	Mar/Jul	Parramatta City	3 terms-12 months	55
D Business (Extended)/B Business	Mar/Oct	Bankstown City	4 terms-16 months	O/A
	Mar/Oct	Parramatta City	4 terms-16 months	O/A

## COMMUNICATION ARTS AND DESIGN

PROGRAM	INTAKE	LOCATION	DURATION	LSR
D Communication/B Communication	Mar/Jul	Nirimba	3 terms-12 months	55
D Communication/B Creative Industries	Mar/Jul	Nirimba	3 terms-12 months	55
D Communication/B Screen Media (Arts and Production)	Mar/Jul	Nirimba	3 terms-12 months	55
D Communication Extended – Communication	Mar/Oct	Nirimba	4 terms-16 months	O/A
D Communication Extended – Creative Industries	Mar/Oct	Nirimba	4 terms-16 months	O/A
D Communication Extended – Screen Media (Arts and Production)	Mar/Oct	Nirimba	4 terms-16 months	O/A
D Design/B Design (Visual Communication)	Mar/Jul	Nirimba	3 terms-12 months	55
D Design/B Graphic Design (Pathway to Teaching Secondary)	Mar/Jul	Nirimba	3 terms-12 months	55
D Design Extended – Design (Visual Communication)	Mar/Oct	Nirimba	4 terms-16 months	O/A
D Design Extended – Graphic Design (Pathway to Teaching Secondary)	Mar/Oct	Nirimba	4 terms-16 months	O/A

**Key:** LSR = Lowest Selection Rank, D = Diploma in, O/A = Open Access.





## PROFILE

### Wing Hong

Diploma in Arts

Bachelor of Psychology (Honours)

When challenges during Year 12 meant Wing Hong didn't get the ATAR result he needed, a Diploma in Arts from The College at Western opened up a pathway to uni. After topping his cohort in the Diploma course, Wing Hong entered the second year of a Bachelor of Psychology (Honours) and is now pursuing a career in clinical psychology.

## CONSTRUCTION AND ENGINEERING

PROGRAM	INTAKE	LOCATION	DURATION	LSR
D Building Design Management/ B Building Design Management	Mar/Jul	Penrith	3 terms–12 months	55
D Building Design Management Extended	Mar/Oct	Penrith	4 terms–16 months	O/A
D Construction Technology/ B Construction Technology	Mar/Jul	Penrith	3 terms–12 months	55
D Construction Technology Extended	Mar/Oct	Penrith	4 terms–16 months	O/A
D Engineering/B Engineering Studies	Mar/Jul	Penrith	3 terms–12 months	55
D Engineering Extended	Mar/Oct	Penrith	4 terms–16 months	O/A

## HEALTH SCIENCE AND NURSING

PROGRAM	INTAKE	LOCATION	DURATION	LSR
Undergraduate Preparation Program – Nursing/Health Science	Mar	Nirimba	1 term–4 months	O/A
Undergraduate Preparation Program – Nursing/Health Science (2 Terms)	Mar	Nirimba	2 terms–8 months	O/A
D Health Science/B Health Science	Mar/Jul	Nirimba	3 terms–12 months	55
D Health Science Extended	Mar/Oct	Nirimba	4 terms–16 months	O/A
D Health Science/B Health Science (HPE)	Mar/Jul	Nirimba	3 terms–12 months	55
D Health Science (HPE) Extended	Mar/Oct	Nirimba	4 terms–16 months	O/A

## SCIENCE

PROGRAM	INTAKE	LOCATION	DURATION	LSR
D Science/B Science	Mar/Jul	Nirimba	3 terms–12 months	55
D Science/B Medical Science	Mar/Jul	Nirimba	3 terms–12 months	55
D Science Extended – Science	Mar/Oct	Nirimba	4 terms–16 months	O/A
D Science Extended – Medical Science	Mar/Oct	Nirimba	4 terms–16 months	O/A

## INFORMATION AND COMMUNICATIONS TECHNOLOGY

PROGRAM	INTAKE	LOCATION	DURATION	LSR
D ICT/B Information and Communications Technology	Mar/Jul	Nirimba	3 terms–12 months	55
D ICT/B Information Systems	Mar/Jul	Nirimba	3 terms–12 months	55
D ICT Extended – Information and Communications Technology	Mar/Oct	Nirimba	4 terms–16 months	O/A
D ICT Extended – Information Systems	Mar/Oct	Nirimba	4 terms–16 months	O/A

## SOCIAL SCIENCE, POLICING AND CRIMINAL JUSTICE

PROGRAM	INTAKE	LOCATION	DURATION	LSR
Associate Degree in Engineering	Feb	Online	4 years part-time	N/A
D Society, Culture and Justice	Mar/Jul	Bankstown City	2 semesters– 9 months	O/A
	Mar/Jul	Nirimba	2 semesters– 9 months	O/A

**Note:** Students should visit the NSW Police Force Recruitment website frequently for information on recruitment, including selection criteria, application process and medical assessment forms.

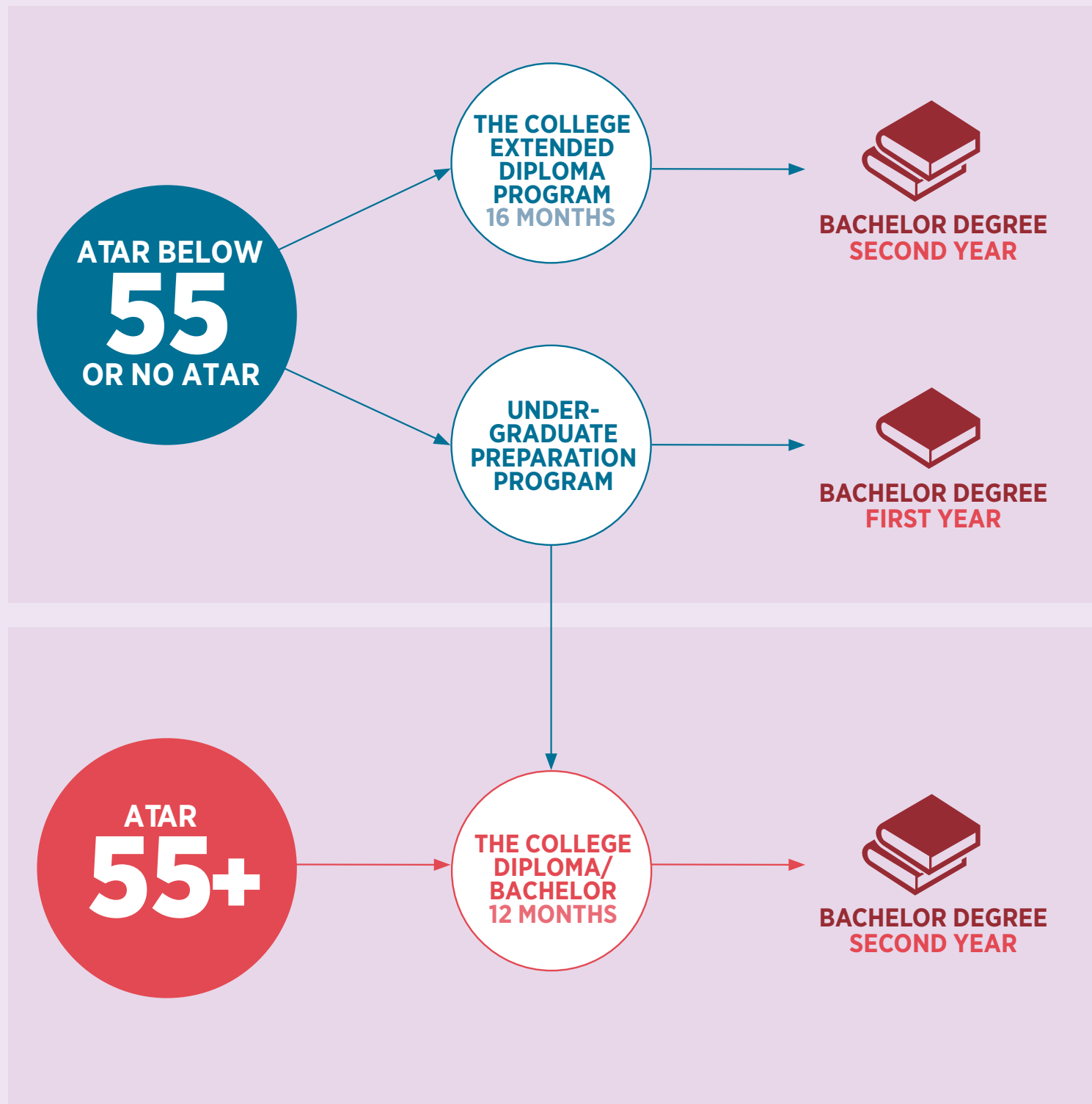
**Key:** LSR = Lowest Selection Rank, D = Diploma in, O/A = Open Access.



# THE COLLEGE

## Diploma to Degree Pathway

UNDERGRADUATE GUIDE 2024



Successful completion of the Diploma components of the Integrated programs provides 80 credit points for prior learning (equivalent to a year of study) in the corresponding Bachelor degree at Western Sydney University.



# APPLICATION PATHWAYS

We believe that success is fuelled by a strong desire and ambition. If you have the drive and determination to succeed Western Sydney University offers you an unlimited world of potential.

## ALTERNATE ENTRY

We offer a range of alternative entry pathways which take into account additional factors besides your academic results.

### Portfolio and Audition Pathways

- **Music** – You may either audition into the degree or submit qualifications for Band 4 HSC Music, AMEB theory qualifications.
- **Industrial Design** – Entry by Interview, means your personal aptitude, professional experience, and educational qualifications are taken into consideration supported by a portfolio of works to showcase your creative work.
- **Design (Visual Communication)** – Entry by Interview, allows you to showcase your creative work.

### Rural Entry Admission Scheme

The Rural Entry Admission Scheme (REAS) is an initiative to promote Medicine to applicants with an extensive rural background who are able to demonstrate and meet rurality and other assessed factors.

### Schools Recommendation Scheme (SRS)

If you're a Year 12 student completing your HSC or IB, and you're applying through UAC, the Schools Recommendation Scheme (SRS) gives you a chance to receive an early offer based on your academic performance in Year 11 and your school's rating of your aptitude for tertiary studies.

For more information visit  
[westernsydney.edu.au/pathways](https://westernsydney.edu.au/pathways)

## ADJUSTMENT FACTORS

You may be eligible for up to 10 adjustment factors, or points added to your ATAR, from the below:

- **Regional adjustment factors** – If you live in the western Sydney region
- **Subject adjustment factors** – If you achieve outstanding results in relevant HSC or IB subjects
- **Educational Access Scheme (EAS)** – If your studies were negatively affected in Year 11 and/or 12, or the period in which you gained the qualifications you are using to seek admission
- **Elite Athlete and Performer Scheme** – If you're an athlete or performer and your commitments have affected your Year 11 and 12 studies
- **Student Veteran Program adjustment factors** – If you are an Australian Defence Force current, reserve or previous serving member.

For more information visit  
[westernsydney.edu.au/adjustmentfactors](https://westernsydney.edu.au/adjustmentfactors)



## ABORIGINAL AND TORRES STRAIT ISLANDER PATHWAY PROGRAM

This alternative entry pathway aims to increase access and participation of Aboriginal and Torres Strait Islander peoples in undergraduate degrees across all areas of study. Assessment days are held on campus and online four times per year. Based on these results applicants can receive an early offer to Western.

For more information, visit  
[westernsydney.edu.au/pathwayprogram](https://westernsydney.edu.au/pathwayprogram)

## THE COLLEGE

Owned by Western Sydney University, The College offers a pathway to university study through its comprehensive range of Integrated Diploma/Bachelor programs, Extended Diplomas and Undergraduate Preparation Programs.

For more information, visit  
[westernsydney.edu.au/thecollege](https://westernsydney.edu.au/thecollege)

## SPECIAL TERTIARY ADMISSIONS TEST (STAT)

Western Sydney University accepts the multiple choice STAT test results when considering applicants.

For more information, visit [stat.acer.org/au](https://stat.acer.org/au)

## TERTIARY EDUCATION PATHWAYS AND PARTNERSHIPS

TAFE, Community College and private providers offer Certificate IV and Diploma programs under the Australian Qualification Framework (AQF). There are a number of programs that have established pathways with Western Sydney University.

For more information, visit  
[westernsydney.edu.au/pathways](https://westernsydney.edu.au/pathways)

If you have any questions about our pathways, please call our University Information Centre on **1300 897 669** or email [study@westernsydney.edu.au](mailto:study@westernsydney.edu.au)



# HOW TO APPLY

## IF YOU ARE COMPLETING YEAR 12 AT THE TIME OF APPLYING:

1. Check your eligibility for bonus points where you could qualify for up to 10 bonus points to go toward your application to Western Sydney University. Visit: [westernsydney.edu.au/bonuspoints](https://westernsydney.edu.au/bonuspoints)
2. Apply direct to Western at [westernsydney.uac.edu.au/ws](https://westernsydney.uac.edu.au/ws), or include Western programs in your program preferences with the Universities Admissions Centre (UAC).
  - Your application will be considered on the basis of your Australian Tertiary Admissions Rank (ATAR) or equivalent.
  - There are some programs that have additional selection criteria – refer to the UAC Guide or [westernsydney.edu.au/future](https://westernsydney.edu.au/future)
3. Know all the information about our alternative entry pathways (see page 60).

## IF YOU ARE NOT COMPLETING YEAR 12 AT THE TIME OF APPLYING:

1. Gather information for your application.
2. Apply direct to Western at [westernsydney.uac.edu.au/ws](https://westernsydney.uac.edu.au/ws), or through the Universities Admissions Centre (UAC) [uac.edu.au](https://uac.edu.au)

Your application will be based on the results of your secondary, tertiary or other accredited academic qualifications including:

- Australian Tertiary Admissions Rank (ATAR), University Admissions Index (UAI), Tertiary Entrance Rank (TER) or equivalent
- Australian Qualification Framework (AQF) Certificate III or above
- Previous university study (minimum two subjects)
- Special Tertiary Admissions Test (STAT) results
- Work experience (minimum of 12 months full-time or equivalent work).

Each qualification will be allocated a rank. If you have one or more of the above qualifications, the highest rank will be used in assessing your application.

Regional bonus points – if you are a non-current school leaver (not completing Year 12 or International Baccalaureate at the time of applying for university) and live or study in the western Sydney region, you will automatically receive five bonus points when you apply to study at Western Sydney University.

3. Know all the information about our alternative entry pathways (see page 60).

## IF YOU ARE AN ABORIGINAL AND/OR TORRES STRAIT ISLANDER PERSON

Aboriginal and Torres Strait Islander applicants have two pathways to apply to Western Sydney University.

1. Apply direct to Western at [westernsydney.uac.edu.au/ws](https://westernsydney.uac.edu.au/ws), or through the Universities Admissions Centre (UAC) [uac.edu.au](https://uac.edu.au). Students who are eligible for an ATAR are encouraged to complete an online application for admission direct to Western via [westernsydney.uac.edu.au/ws](https://westernsydney.uac.edu.au/ws) or via UAC at [uac.edu.au](https://uac.edu.au)

2. Admission via the Aboriginal and Torres Strait Islander Pathway Program: Apply direct to Western at [westernsydney.uac.edu.au/ws](https://westernsydney.uac.edu.au/ws) and confirm you would like to be invited to attend the program. If you are unable to apply this way, complete the Aboriginal and Torres Strait Islander Pathway application form at [westernsydney.edu.au/pathwayprogram](https://westernsydney.edu.au/pathwayprogram)

For more detailed admission advice, or if you require assistance with the application, please contact the Student Services Hub on **1300 897 669** or email [study@westernsydney.edu.au](mailto:study@westernsydney.edu.au)

## IF YOU ARE AN INTERNATIONAL STUDENT

International students completing one of the following qualifications in 2023 can apply via UAC International.

- Australian Year 12 Higher School Certificate in or outside Australia
- International Baccalaureate in Australia
- New Zealand National Certificate of Educational Achievement (NCEA), Level 3.

International students can also be considered for an early conditional or provisional offer by applying direct to Western Sydney University with the exception of the programs listed below. These programs are excluded from Early Offer and are mandatory to apply via UAC. Please see [westernsydney.edu.au/internationalapplicants](https://westernsydney.edu.au/internationalapplicants)

- Doctor of Medicine
- Dean's Scholars and Advanced Programs
- B Physiotherapy
- B Podiatry Medicine
- B Occupational Therapy
- B Speech Pathology
- B Paramedicine.

NOTE: This guide is intended for domestic students. International students should read the information in this brochure in conjunction with information available at [westernsydney.edu.au/internationalstudy](https://westernsydney.edu.au/internationalstudy)

## CONTACT US

Western Sydney International  
[westernsydney.edu.au/internationalstudy](https://westernsydney.edu.au/internationalstudy)  
**61 2 9852 5499**  
[internationalstudy@westernsydney.edu.au](mailto:internationalstudy@westernsydney.edu.au)

## IF YOU ARE APPLYING TO SYDNEY CITY CAMPUS

1. Domestic students:  
Apply direct to Western at [westernsydney.uac.edu.au/ws](https://westernsydney.uac.edu.au/ws), or through the Universities Admissions Centre (UAC) [uac.edu.au](https://uac.edu.au)
2. International students:  
Apply via our online application form [westernsydney.edu.au/city/apply](https://westernsydney.edu.au/city/apply)

For more information, visit [westernsydney.edu.au/city](https://westernsydney.edu.au/city) or email [study@city.westernsydney.edu.au](mailto:study@city.westernsydney.edu.au)

## APPLICANT CHECKLIST

# 1

### FIND OUT ABOUT OUR PROGRAMS

- Read the information within this Guide
- Talk with careers advisors, your parents and teachers/mentors
- Refer to the Future Students site, visit [westernsydney.edu.au/future](https://westernsydney.edu.au/future)

# 2

### TALK TO US

- Attend Western Sydney University events – find out more at [westernsydney.edu.au/events](https://westernsydney.edu.au/events)
- Call the Student Services Hub on **1300 897 669** or email [study@westernsydney.edu.au](mailto:study@westernsydney.edu.au)
- Get the inside information on entry for Medicine, Early Offer programs, Alternative Entry Pathways, Bonus Points and Scholarships.

# 3

### APPLY TO US

- Apply through UAC, visit [uac.edu.au](https://uac.edu.au) or apply direct to Western at [westernsydney.uac.edu.au/ws](https://westernsydney.uac.edu.au/ws)
- Place your Western Sydney University preferences
- Check your eligibility and submit a scholarship application, visit [westernsydney.edu.au/scholarships](https://westernsydney.edu.au/scholarships)



# SCHOLARSHIPS

Each year, Western Sydney University offers \$20 million in scholarships for a generous range of University, government and donor-funded opportunities.

These scholarships reflect the University's strong commitment to academic excellence and inclusivity by providing access to higher education for students with diverse skills, interests and backgrounds. They also recognise those who make an active contribution to their local and broader community.

There are over 100 scholarships across four categories:

- Indigenous scholarships: Dedicated to providing opportunities for academically gifted Australian Indigenous students
- High potential scholarships: Recognising academic achievement, leadership qualities, exceptional talent, elite athletes and Western program participants
- Equity scholarships: Providing support for students from equity and educationally disadvantaged backgrounds
- Humanitarian scholarships: Enabling refugees and asylum seekers to achieve their dreams.

For more information about our scholarships, please contact the Scholarships team on **02 9852 5501**, [scholarships@westernsydney.edu.au](mailto:scholarships@westernsydney.edu.au) or [westernsydney.edu.au/scholarships](http://westernsydney.edu.au/scholarships)



**\$20M**  
IN SCHOLARSHIPS,  
GRANTS AND PRIZES

## PROFILE

### Luke Hodge

Bachelor of Communication (Screen Media)  
Harvey Norman Scholarship recipient

Luke Hodge is a proud and grateful  
Dunghutti man

"At 15 years of age I was diagnosed with an auto-immune disorder and going through that at such a young time in my life, I thought potentially maybe university wasn't realistic or something I could achieve at the time because of that.

Without the scholarship I wouldn't be where I am today nor would I have the chance to be who I am or want to be moving forward. I want to bring that genuine connection to Country and hope to inspire other creative youth, and Indigenous youth especially, to bring their story to the big screen."

Luke is thankful for the scholarship for "giving (him) a chance and the platform to encourage and hopefully inspire (his) fellow Aboriginal and Torres Strait Islander peers and youth".



# BE JOB READY



The Western Careers and Employability Team are here to help you make those life-changing career decisions. We can support you with career planning, career management, the transition into employment and beyond.

## CAREERS SERVICES

[westernsydney.edu.au/careers](https://westernsydney.edu.au/careers)

Explore our wide range of jobs, resources, programs and workshops that help you identify and establish your career pathway.

### JOBS FOR STUDENTS

Employment opportunities are available at every stage of your career and studies. From graduate roles, internships, casual jobs on campus and work integrated learning programs, both Western Sydney University and our valued industry partners regularly advertise exclusive opportunities to our students to foster employability skills and expand your career prospects.

### LINKING STUDENTS TO INDUSTRY

Industry experience is a great way to gain practical knowledge and improve your future workplace skills. The Careers and Employability Team at Western actively seeks relationships with Australia's most esteemed graduate employers, as well as valued local employers, specifically to link students with degree-related opportunities outside of the University.

### ACCESS TO FLAGSHIP EMPLOYABILITY PROGRAMS

**Career Activate** – We recognise that you are more than just a degree or set of skills on a résumé. This innovative employment immersion program helps you develop a range of real-world skills and experiences to help you stand out from the competition.

Co-designed by Western and our highly-regarded industry partners, you have the chance to take part in both immersive virtual experiences and live work-related challenges giving you the opportunity to build meaningful employment connections and showcase your abilities.

**Graduate Recruitment Accelerator** – During your penultimate or final year, you are invited to participate in the Graduate Recruitment Accelerator. This program prepares you to make competitive applications for highly sought-after graduate employment programs.

### The Women in Stem Education (WiSE) Program

– This program supports the career development of women studying in the areas of science, technology, engineering and mathematics (STEM). It provides valuable assistance including employer visits, career development workshops and networking events with peers, alumni and industry contacts.

**Employability Enhancement Programs** – These programs provide you with unique opportunities to work with real organisations on real-world problems. You will be mentored by industry experts to build your employability skills whilst making valuable connections.

### OUR GRADUATE SUCCESS

Our contribution to your success does not end at graduation. As a member of the Western Alumni Community, you are part of a strong network of professionals and thought leaders that will inspire your career journey. You will also gain from extended access to specialised career resources, opportunities to network at events, and a wide range of benefits in support of your professional development and lifelong learning.

**A PERFECT SCORE**  
FOR EMPLOYABILITY\*

### OUR GRADUATE OUTCOMES

**45** OUT OF 100 UNDER-GRADUATES  
&  
**910** OUT OF 1000 POST-GRADUATES

**ARE EMPLOYED WITHIN FOUR MONTHS OF GRADUATION**

\* QS Top Universities: QS Stars Ratings 2021



### PROFILE

**Biruk Bogale**

Graduate

Bachelor of Sport and Exercise Science

"I have learnt the power of hard work, perseverance, networking and connecting with students from different walks of life...Western Sydney University helped me grow, reach my full potential and opened so many doors for me."



# FACTS ON FEES

As a Western Sydney University student, you may need to pay a number of fees throughout your studies, depending on your degree and your enrolment status. These fees may include student contribution, tuition fees and student services fees.

Western Sydney University offers Commonwealth Supported Places (CSP) for domestic students studying Undergraduate Award programs and a selection of Postgraduate Award programs.

A Commonwealth Supported Place (CSP) is one that is subsidised by the Commonwealth meaning that the Australian Government pays part of your fees, and the remaining amount is paid by you (which is referred to as your student contribution amount).

Your student contribution amount will be calculated on a per subject basis and is dependent on the discipline area of the subject of study, not the program you are enrolled in.

You can work out the exact cost of your Student Contribution for the semester or year on the Student contribution calculations page.

If you're eligible, you may be able to obtain a HELP loan to defer your student contribution (HECS-HELP) and student services fees (SA-HELP).

If you need more information visit [westernsydney.edu.au/fees](https://westernsydney.edu.au/fees)

Fees for undergraduate international students are different than for domestic students.

For more information about fees for international students visit [westernsydney.edu.au/currentstudents/current\\_students/fees/international\\_fees](https://westernsydney.edu.au/currentstudents/current_students/fees/international_fees)

## FINANCIAL SUPPORT

### Student Welfare Service

We offer a confidential service and can help you with support and advocacy or financial assistance. For more information, visit [westernsydney.edu.au/studentcentral](https://westernsydney.edu.au/studentcentral)

## NEW STUDENT CONTRIBUTION BANDS IN 2023

	2023 maximum student contribution *(EFTSL)
<b>Student Contribution Band 4</b>	
Law, accounting, administration, economics, commerce, communications, society and culture	\$15,142
<b>Student Contribution Band 3</b>	
Dentistry, medicine, veterinary science	\$11,800
<b>Student Contribution Band 2</b>	
Other health, allied health, built environment, computing, engineering, surveying, science, environmental studies, pathology, visual and performing arts, professional pathway psychology, professional pathway social work	\$8,301
<b>Student Contribution Band 1</b>	
Agriculture, English, mathematics, education, clinical psychology, Indigenous and foreign languages, nursing, statistics	\$4,124

\*equivalent full time study load (EFTSL)

# SERVICES AND SUPPORT

## BEFORE YOU START

[westernsydney.edu.au/starting](https://westernsydney.edu.au/starting)

has everything you need to know.

## STARTING AT UNIVERSITY

### Academic Welcome Sessions

Academic Welcome Sessions are an opportunity for you to find out more about your program and meet fellow students and academic staff.

### MATES

MATES provides first year students with an opportunity to connect with other new students and mentors who are in later years of study. This helps you meet friends, network with others and gain knowledge and skills to settle into life at university.

### English Conversation Groups (ECG)

English Conversation Groups is a peer led program that provides students with the opportunity to practice their conversational English in a relaxed fun environment with their peers. The groups are an opportunity to increase your confidence in English conversation, build your network and increase your knowledge of Australian slang.

### Western Success Welcome Calls

We want you to love your time at Western Sydney University and succeed with your studies. Western Success is our way of helping you start that journey. If you are not sure what is expected of you, how to find things or what the systems are, why not speak to a senior student? At Western Success we are students just like you and want to help you settle in as quickly as possible. We will reach out to you by phone to make sure you are settling in to the University.

## SOMEONE TO TALK TO

### Student Services Hub

Have a question? Student Services Hub is your first point of contact for information, advice, forms and referrals to other services.

### Student Welfare Service

The Student Welfare Service is here to guide and support you through unexpected times in your university journey. We provide student support, advice and referrals in the following areas: Academic, Personal and Financial Hardship, International Support and Accommodation. We also provide tailored support to student carers, Under 18 international students and Asylum Seeker Scholarship holders.

### Counselling Service

The Counselling Service offers short term confidential counselling to assist you with any barriers that may affect your study. Counselling is offered via telehealth and online counselling, phone and face to face.



### Inclusive Communities

Our Inclusive Communities team offers a caring presence to all staff and students at the University; encouraging spirituality, offering hospitality and creating community.

### MEMBERS OF THE ADF

#### Student Veteran Program

Western Sydney University welcomes student veterans – current, reserve or previous serving ADF members. Support is available for:

- Admissions and enrolment
- Equity issues, such as disability
- Wellness support, including flexible arrangements
- Study and career transition support.

Find out more at:

[westernsydney.edu.au/ADF](https://westernsydney.edu.au/ADF)

### STUDENTS WITH A DISABILITY

#### Disability Service

The Disability Service supports and assists future and current students with disabilities and chronic health conditions to participate fully in university life and reach their full academic potential. This particularly involves the development of educational adjustments.

### ELITE ATHLETES AND PERFORMERS PROGRAM (EAP)

Student athletes can manage their studies while competing in high-level sport as part of the EAP – which also considers coaches and match officials. EAP is free to join, and once approved, the University provides EAP students with:

- Early access to tutorial registration and other special consideration in line with University guidelines
- Discounts on costs associated with representing Western at Unisport events
- Free access to University gyms
- Free/Discounted access to the UniClinic and University Psychology Services.

Find out more at:

[westernsydney.edu.au/future/student-life/sport/elite-athlete-program](https://westernsydney.edu.au/future/student-life/sport/elite-athlete-program)

### WORKSHOPS AND RESOURCES

From time management to getting ready to study, the University offers a range of online workshops and modules to help you develop skills that will assist you in study and life! Check them out at [westernsydney.edu.au/workshops](https://westernsydney.edu.au/workshops). Face to face workshops are also run within programs and subjects of study.

### TALKCAMPUS

TalkCampus is a free app that you can download onto your device to talk anonymously to other students from universities around the world. Access free mental health support, 24 hours a day, seven days a week.

To sign up, please use your Western student email address to unlock the app free of charge.

For more information, visit the TalkCampus webpage: [talkcampus.io](https://talkcampus.io)



### HELPING HANDS

#### PASS

Peer Assisted Study Sessions (PASS) is a student-centred learning program offered face to face and online. In PASS you will meet and work collaboratively with other students to understand the subject content and develop study strategies to help improve your academic performance.

### STUDY SMART ZONE

Smash your studies in the Study Smart Zone. Get free one-on-one academic support when you need it.

Visit [westernsydney.edu.au/studysmart](https://westernsydney.edu.au/studysmart)

### BADANAMI CENTRE

The Badanami Centre for Indigenous Education provides support and encouragement for our Aboriginal and Torres Strait Islander peoples. There are centres located on each campus.

### HOW TO CONTACT US:

P: 1300 668 370

E: [studentcentral@westernsydney.edu.au](mailto:studentcentral@westernsydney.edu.au)

For more information, check out our webpage:

[westernsydney.edu.au/studentcentral](https://westernsydney.edu.au/studentcentral)





## MESSAGE FROM THE VICE-CHANCELLOR



Western Sydney University is a world-class university, internationally recognised for its research strength, innovations in teaching and ongoing commitment to sustainability. The University, located in the heart of western Sydney, is ideally positioned to give students global perspective and opportunity. We strive to achieve our mission that our future students will succeed, that our research will have impact and that our communities will thrive through our shared commitment to excellence, sustainability, equity, transformation and connectedness.

The University continues to cement its reputation as one of the world's top universities, being within the top two per cent worldwide, as ranked by the prestigious Times Higher Education (THE) World University Rankings for 2022. We were also ranked first in the world in the 2022 THE Impact Rankings in recognition of our commitment to meeting the United Nations' Sustainable Development Goals (SDGs) through research, teaching, outreach and stewardship.

Western Sydney University is committed to working closely with our students to unlock their potential as future change-makers and leaders. Our values of boldness, fairness, integrity and excellence guide all that we do. Social justice, inclusive education, addressing inequality, environmental stewardship and resilience are core to our mission. We are committed to delivering action in all these areas and fostering the next generation of thought leaders and civic-minded citizens who can solve the complex challenges of our ever-changing world.

As we become an even more integral part of western Sydney and, more broadly, the global community, we continue to focus on changing lives. We pursue and deliver new study options, pathway programs and support services to ensure our students have access to a broad range of high-quality undergraduate and postgraduate opportunities. Our diverse campuses challenge the traditional model of a university, exemplified by the newly opened Bankstown City campus, offering technology-rich, state-of-the-art teaching and research facilities as well as opportunities for work integrated learning, collaborative enterprise partnerships and strong linkages to industry, community and business.

Your choice of university is an important decision. We believe that success is fuelled by a strong desire and ambition. If you have the drive and determination to succeed, join us at Western Sydney University to experience a vibrant culture that focuses on academic excellence and opportunity with a renowned culture of diversity and inclusivity. We offer you an unlimited world of potential. I look forward to celebrating your future success as a graduate of Western Sydney University.

A stylized, handwritten signature in black ink, appearing to read 'Barney Glover'.

Professor Barney Glover AO  
Vice-Chancellor and President

# CONTACT US

## Call

1300 897 669

## Mail

Locked Bag 1797 Penrith NSW 2751

## Email

study@westernsydney.edu.au

## International Office

westernsydney.edu.au/international

## University Information Team

1300 897 669

study@westernsydney.edu.au

## Sydney City Campus

study@city.westernsydney.edu.au

## The Academy

westernsydney.edu.au/theacademy

## The College

westernsydney.edu.au/thecollege

## Western Sydney University Online

online.westernsydney.edu.au

## Aboriginal and Torres Strait Islander Education

westernsydney.edu.au/atsieducation

## Alumni

westernsydney.edu.au/alumni

## University Events

westernsydney.edu.au/events

## OUR WORLD-ACCLAIMED SUSTAINABILITY CREDENTIALS

In 2022 and 2023, Western Sydney University was ranked number 1 in the world for its commitment to the United Nations' Sustainability Development Goals.

We are also proud to announce that we are now certified **Carbon Neutral** by Climate Active for our business operations in 2022 – ahead of our ambitious new targets. We have achieved a net-zero carbon footprint, which is a significant milestone of our sustainability journey and a testament to our commitment to take action on climate change.

This Course Guide is printed on 100% recycled paper stock to reduce the environmental impact by saving trees, reducing the amount of waste in landfills as well as the energy and water needed to produce new paper, and decreasing greenhouse gas emissions.

We urge you to recycle this publication. Please consider sharing it with others or passing it on when you have finished with it.

## Production

This book is printed on Monza Satin: 100% recycled content, FSC® certified, ISO 14001 certified, contains 100% recycled fibre and is Elemental Chlorine Free.

## ABOUT THE IMAGES IN THIS PUBLICATION

Western's marketing materials only include photos of our own students and staff to help convey authenticity and demonstrate our strong culture of diversity and inclusivity. We thank our brand ambassadors for volunteering to be included in our marketing collateral and for displaying a sense of pride in our University community.

## RANKINGS

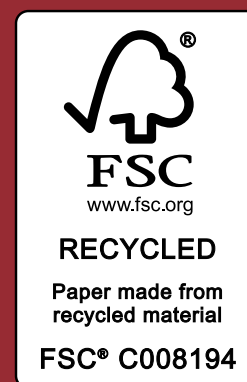
All ranking quoted in this book are benchmarked against over 1000 universities worldwide.

## DISCLAIMER

Western Sydney University reserves the right at all times to withdraw or vary programs listed within this publication. Variations may include, but are not limited to, location of its programs on our campuses or other locations. In the event that a program within this publication is to be changed or withdrawn, applicants will be advised via email to the email address specified by them on their application. With respect to a program location change, students should be aware of the need to accommodate such changes for the whole or part of programs for which they enrol. The University also reserves the right to update, amend or replace online versions of this publication without notice.

Western Sydney University is a multi-campus university. Students may be required to travel to different campuses for some parts of their program.

Published July 2023. CRICOS Provider Number 00917K.





## GET CONNECTED

### Facebook

@westernsydneyu

### Twitter

@westernsydneyu

### Instagram

@westernsydneyu

### LinkedIn

@western-sydney-university

### Future students

[westernsydney.edu.au/future](http://westernsydney.edu.au/future)



**WESTERNSYDNEY.EDU.AU**