

文件下载自万友教育网站

版权归学校所有

www.oneuedu.com

万友优势 ADVANTAGE



客户信息私密性

录入系统后自动设置权限，除专属的案件专员其他内部人员及外部人员不可见



精英团队

文案专员为每位学生一对一定制专属方案，移民律师外部协助。团队为学生带来高质量服务



学生案件更新通知

当文案专员每完成一步，会更新在万友系统中，客户会以邮件的形式收到步骤更新通知，查看自己案件的最新进程



全程服务透明

无押金等不必要条款，客户案件信息透明，收费项会在案件开始前与客户协商一致，案件开始后无特殊意外情况，不会产生收费项目

提供服务 PROVIDE SERVICES

学校
查询

课程
查询

学生
签证

留学
准备

出发
准备

绿卡
资讯



详细流程请扫码
添加客服为您解答





THE UNIVERSITY OF
MELBOURNE

STUDY AT MELBOURNE 2022

GUIDE FOR
INTERNATIONAL
STUDENTS

UNIVERSITY OF MELBOURNE AT A GLANCE



#1 IN AUSTRALIA^{①②③}



#31 IN THE WORLD^④



#7 IN THE WORLD FOR EMPLOYABILITY^⑤



FLEXIBLE AND FOCUSED UNDERGRADUATE DEGREES

Select majors, electives and breadth subjects that focus on your chosen career from day one. Or, take your time to explore a range of subjects before deciding.



UNPRECEDENTED CHOICE

Our 19 graduate schools offer more than 400 courses, providing boundless scope to you to pursue your passion and develop your career.



YOUR CITY

Consistently ranked as one of the world's most liveable cities, Melbourne is safe, fun and is a hub for tech, the arts and sport.^⑥



WORLDS WITHIN WORLDS

We're woven into the fabric of Melbourne and of Victoria. The University of Melbourne is an integral part of the city, and our global outlook reflects our multicultural home.



YOUR TEACHERS

Learn from expert academics who are changing the world one project at a time. Your lecturers, tutors and mentors will inspire you and prepare you for your career.



YOUR NETWORKS

Melbourne draws high achievers from more countries than any other Australian university. We have over 160 nationalities represented on campus, and our graduates join an international network of over 400,000 alumni.



YOUR CAREER

We're ranked higher for graduate employability than some of the world's top universities, including Oxford, Cambridge, Berkeley and the University of Hong Kong.^④



SUPPORT

Whatever you need, we'll be with you every step of the way. Connect with our services through Stop 1^⑦ – you can always come to us for support and advice.



SCHOLARSHIPS

Melbourne has one of the most generous scholarship programs in Australia. Find one that suits you: scholarships.unimelb.edu.au

① Academic Ranking of World Universities 2020

② Times Higher Education World University Rankings 2021

③ 2021 Best Global Universities Rankings, US News & World Report

④ QS Graduate Employability Rankings 2020

⑤ Economist Intelligence Unit's annual global liveability survey

⑥ students.unimelb.edu.au/student-support/advice-and-help/stop-1

RANKINGS AT A GLANCE



#1 IN AUSTRALIA
#20 IN THE WORLD
FOR PSYCHOLOGY



#1 IN AUSTRALIA
#27 IN THE WORLD FOR
MODERN LANGUAGES



#1 IN AUSTRALIA
#11 IN THE WORLD
FOR LAW AND LEGAL
STUDIES



#1 IN AUSTRALIA
#18 IN THE WORLD
FOR ACCOUNTING
AND FINANCE



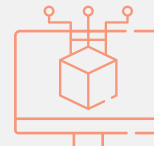
#1 IN AUSTRALIA
#30 IN THE WORLD
FOR ECONOMICS AND
ECONOMETRICS



#1 IN AUSTRALIA
#26 IN THE WORLD
FOR BUSINESS AND
MANAGEMENT



#1 IN AUSTRALIA FOR
BIOLOGICAL SCIENCE



#1 IN AUSTRALIA FOR
COMPUTER SCIENCE
AND INFORMATION
SYSTEMS



#1 IN AUSTRALIA
FOR STATISTICS
AND OPERATIONAL
RESEARCH



#16 IN THE WORLD
FOR GEOGRAPHY



#19 IN THE WORLD
FOR SOCIOLOGY



#19 IN THE WORLD
FOR PERFORMING
ARTS



#20 IN THE WORLD
FOR ENGLISH
LANGUAGE AND
LITERATURE



#21 IN THE WORLD
FOR DEVELOPMENT
STUDIES



#23 IN THE WORLD
FOR ARCHITECTURE



#25 IN THE WORLD
FOR ENVIRONMENTAL
STUDIES

YOUR CITY

THE CITY OF MELBOURNE

Located in the state of Victoria, on the south east coast of Australia, at the University of Melbourne you will be living and studying in the city of Melbourne, Australia's cultural capital.

Voted one of the world's most liveable cities for nine years and counting, Melbourne is renowned for its celebration of art, sport, cuisine and (for the more practical) great public transport.

Melbourne is one of the world's most multicultural cities and dynamic international business hubs, while still being quirky, fun and easy to navigate.

The inner city is a cluster of exciting communities connected by public transport and bike paths, and the University of Melbourne is at the heart of it all.

Explore the city's famous cobblestone lanes, go to a music festival, take in a world-class theatre production, sample amazing cuisine or catch an AFL game – you can do it all (and more!) in Melbourne.

As a student living in Melbourne, jump on an iconic local tram to the doorstep of our Parkville campus, pop into our weekly farmer's market before class and find yourself a quintessential Melbourne coffee.



Travel from our Parkville campus to the CBD in 15 minutes by tram



Live in a city with more cafes and restaurants per number of residents than any other city in the world



Over 3000 live music performances weekly



State capital of Victoria



Sporting and cultural capital of Australia

BROOME



THE KIMBERLEYS

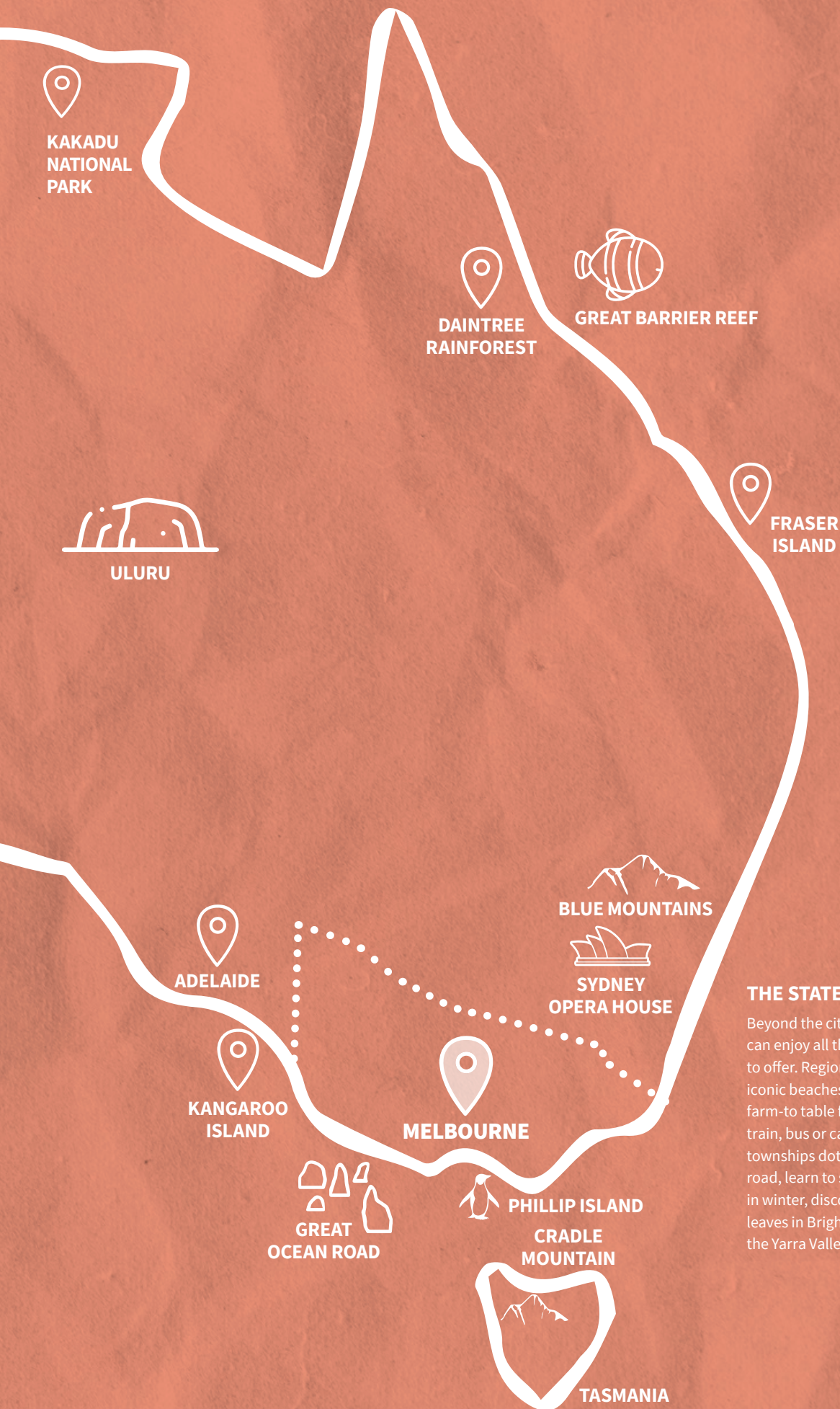


KALBARRI



PERTH

GREAT
AUSTRALIAN
BITE



THE STATE OF VICTORIA

Beyond the city of Melbourne, students can enjoy all that the state of Victoria has to offer. Regional Victoria is known for its iconic beaches, wineries, bushwalking and farm-to table food, and is accessible by train, bus or car. Enjoy summer drives to townships dotted along the Great Ocean road, learn to ski in Victoria's alpine resorts in winter, discover the joys of falling autumn leaves in Bright, or enjoy the cellar doors of the Yarra Valley.



YOUR CAMPUS

The University of Melbourne has been a central part of the city of Melbourne from its earliest days.

It's hard to say where the central business district stops, and the University begins. When you join Melbourne, you'll also be joining a vibrant medical precinct, a world-famous artistic community, a thriving start-up network, and urban and rural researchers who will be feeding the world into the future.

Which Melbourne will be yours?

PARKVILLE

Our **Parkville campus** is a city within a city – it even has its own postcode. Spread across a mix of historic sandstone buildings and state of the art facilities, you'll find cafes, 12 libraries, gyms, specialty stores, a small supermarket and even a seasonal farmers' market. The Parkville campus is situated within a renowned knowledge precinct, which includes eight hospitals, many leading research institutes and a wide range of knowledge-based industries.

With construction due for completion in early 2022, the new Student Precinct will be a place for students, staff and the wider community to engage, learn and grow. It has been designed to facilitate student connection, by enhancing the campus-based experience and fostering a sense of inclusion to enable peers, colleagues and cohorts to forge new relationships, collaborate and innovate.

SOUTHBANK

Our **Southbank campus** is situated in the city's lively creative arts precinct – which itself is in the centre of Australia's cultural capital. Here you'll find the University's acclaimed music, visual and performing arts faculty. Southbank campus is purpose-built for the creative arts, and features sound and dance stages, animation studios, cinemas and visual arts studios. It sits alongside the National Gallery of Victoria, Melbourne Theatre Company, Melbourne Recital Centre, the Australian Ballet, Chunky Move dance company, the Arts Centre and the Australian Centre for Contemporary Art.

SPECIALIST CAMPUSES IN MELBOURNE AND REGIONAL VICTORIA

The University is a key partner in industries across Victoria. We collaborate with others to solve rural health issues and ecological challenges facing us today.

In the city's west, the **Werribee campus** boasts some of the world's most advanced veterinary facilities at the University's Animal Hospital.

Our **Burnley campus** is dedicated to environmental and ornamental horticulture, with nine hectares of heritage-listed gardens.

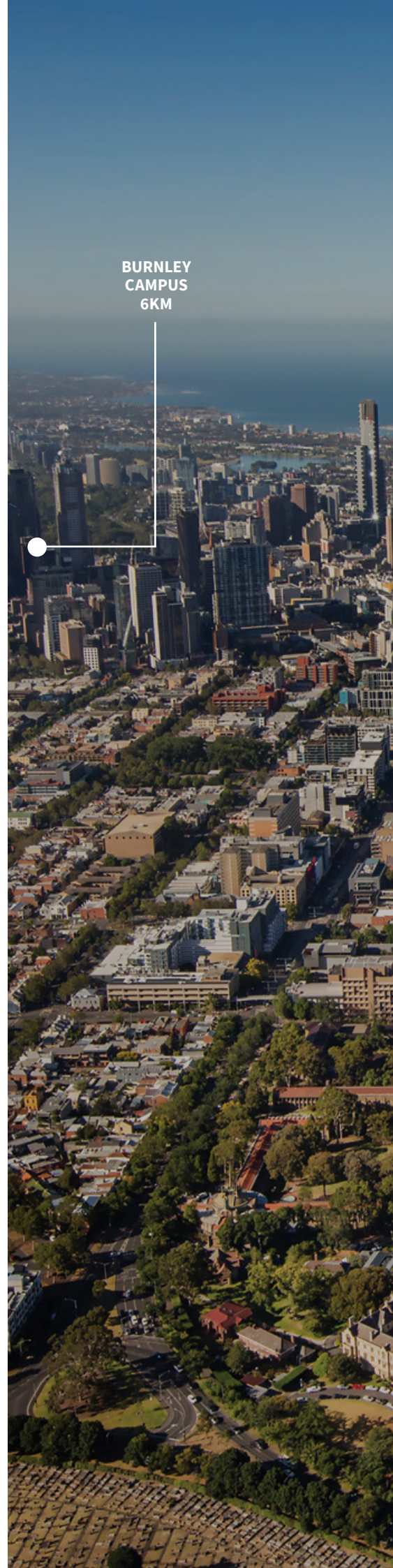
In **Creswick** you'll find Australia's only dedicated forest ecosystem science campus, focusing on conservation, forest industry and molecular biology research.

The **Dookie campus** has played a pivotal role in the development of agriculture and agricultural teaching and learning in Australia since 1886. It remains a focal point for key research, teaching and technology development, helping to shape the future of agriculture in Australia.

Our bold new engineering and design campus at **Fishermans Bend** will bring research to life at an industrial scale. The campus will be the University's new place for large experimental research, hands-on learning and industry colocation. Large, interactive spaces, world class facilities and a vibrant innovation environment will transform the education experience and push the boundaries in research and development.

The **Shepparton Medical Centre** campus specialises in rural health and clinical education.

BURNLEY
CAMPUS
6KM





**SOUTHBANK
CAMPUS**

**PARKVILLE
CAMPUS**

**CENTRAL
BUSINESS
DISTRICT**

**MELBOURNE
BIOMEDICAL
DISTRICT**

**CRESWICK
CAMPUS
124KM**

**FISHERMANS
BEND
10KM**

**WERRIBEE
CAMPUS
30KM**

**DOOKIE CAMPUS
212KM**

**SHEPPARTON CAMPUS
190KM**

YOUR HOME

Live in the heart of Australia's most liveable city.

We have been expanding our range of accommodation options, making it easier than ever to find your place at Melbourne. Select from shared apartments, self-contained studios, dormitory-style living, residential colleges, homestay and private rental options.

LITTLE HALL, LISA BELLEAR HOUSE AND UNILODGE LINCOLN HOUSE

Enjoy your best university life and stay within walking distance of our Parkville campus, in university-approved accommodation.

Residences include Little Hall - a learning hub with dedicated academic programs; Lisa Bellear House - located over the road from parklands and situated between our Parkville campus, the city centre and the vibrant student district of Brunswick; and UniLodge Lincoln House - modern dormitory-style living with impeccably-designed shared facilities overlooking the city. No matter which residence you call home, our team of professional staff will be ready to support you in any circumstance and ease your transition into university life. You'll also be able to enjoy a year-round calendar of social, academic, wellbeing and sporting activities.

As an undergraduate, full-time student, you are eligible for an offer of guaranteed accommodation. Rest easy knowing you have a place to call home at Melbourne.

RESIDENTIAL COLLEGES

Be part of something bigger within an immersive residential college community ranging in size from 70-400 students. With all meals provided, weekly academic tutorials, and comprehensive support included, college living is a unique and transformative experience. With 140 years of rich heritage, colleges blend historic architecture with modern facilities.

Share rich conversations in iconic dining halls, make close friends through clubs, societies and intercollegiate competition and immerse yourself in a range of social, cultural, sporting, musical and leadership programs. With dedicated residential tutors and professional staff living on site, college will support your learning with academic tutorials, pastoral care, career mentors and vast alumni networks, encouraging you to perform at your best and develop real world skills. With \$5-7 million in college scholarships awarded each year, more than one-third of students receive financial aid in addition to part-time employment opportunities.

OTHER OPTIONS

The University's Student Housing service provides detailed information and support to assist students with finding alternate housing options, such as homestay, hostels or private rentals.

Student Housing can provide advice on your rights and responsibilities as a tenant, refer you to financial support if needed and provide transportation information and tips on getting study ready.

One of your options is Student Village Melbourne. Here you can enjoy your own furnished bedroom with ample workspace and access to village facilities designed specifically for students.

Find out more: study.unimelb.edu.au/discover/accommodation

YOUR LIVING COSTS

Melbourne offers many lifestyle options to fit many budgets, so take the time to consider what suits you best. You might choose to live in the inner suburbs, and walk or cycle to uni. Some students choose to save on rental costs by living further out, in which case they need to think about public transport costs or a car.

Substantial savings can be made by sharing accommodation, shopping at Melbourne's famous markets, using our libraries and student-owned co-ops, and attending free events on campus.



YOUR LIVING COSTS

2021 RESIDENTIAL FEES AND INCLUSIONS

The information in the table below outlines the estimated living costs for a student at the Parkville campus of the University of Melbourne, according to the type of accommodation chosen. Costs vary, within the range provided, depending on the individual residence. Tuition fees are not included in estimates. The average cost of living in Melbourne each year is AUD\$20,000 but this can vary depending on your lifestyle.

AT A GLANCE



Food and eating out
\$140 - \$280/week



Bills (electricity, gas, water and internet)
\$60 - \$80/week



Coffee on campus **\$3.50**



Bike **\$150 (Hire: \$3/day)**



Public transport fares
\$30 - \$60/week



Mobile phone plan
\$15 - \$30/week



Gym membership
\$79/month



Car (after purchase)
\$150 - \$260/week

Accommodation type	Distance from Stop 1	Meals	Weekly cost (based on single occupancy)	Total weeks	Basics: utilities, Internet, furniture/furnishings	24/7 security staff	24/7 professional wellbeing staff	Year-round residential life activities	Year-round calendar of inter-residence events, activities and sport	Academic support	Alumni, career & mentoring programs	Annual cost
Little Hall	450m	x	\$425 - \$570	26, 48 or 52	✓	✓	✓	✓	Sport ^③	Academic enrichment program ^②	Career skills and employment program ^③	\$23,660 - \$32,760 ^④
The Lofts at Melbourne Connect ^②	300m	x	\$385 - \$520	26, 48 or 52	✓	✓	✓	✓	Sport ^③	x	Career skills and employment program ^③	\$21,580 - \$30,160 ^④
Lisa Belleair House	1.6km	x	\$396 - \$486	26, 48 or 52	✓	✓	✓	✓	Sport ^③	x	Career skills and employment program ^③	\$21,840 - \$28,392 ^④
University Apartments	850m	x	\$390 - \$440	26, 48 or 52	✓	✓	x	✓	x	x	x	\$21,840 - \$23,400 ^④
UniLodge Lincoln House	430m	x	\$308 - \$366	26, 48 or 52	✓	✓	✓	✓	Sport ^③	x	Career skills ^③	\$17,576 - \$22,152 ^④
Residential colleges	400m - 1.6km	✓ All meals included	\$684 - \$936	35-39	✓	✓	✓ Staff living onsite	✓	✓	✓ Full weekly academic tutorial program for all subjects	✓	\$26,675 - \$32,763 ^⑤ for a 35 or 39 week stay
Student Village	650m	x	\$338 - \$476	26, 48 or 52	✓	✓	✓	✓	Sport ^③	x	Career skills ^③	\$19,136 - \$27,872 ^④
Private and shared rental in metropolitan Melbourne	Within 5.2km	x	\$340 - \$440	Varies	x Furniture/furnishings varies	x	x	x	x	x	x	\$9568 - \$24,128 ^④
Homestay	Varies	Varies	\$225 - \$460	Varies	Varies	x	x	x	x	x	x	\$13,260 - \$27,040 ^⑥

^① The fees listed in the table are subject to change and indicative only, go to study.unimelb.edu.au/discover/accommodation for updates on current fees and other costs involved.

^② The Lofts at Melbourne Connect is scheduled to open in 2021 and will offer live-in opportunities for graduate students.

^③ Partially meets criteria.

^④ Total estimated annual living cost including rent, utilities, internet and public transport (excludes food, course fees and incidentals). On average, students should budget at least \$80-\$150 per week (\$4160-\$7800 per year) for food and groceries if they do not have meals provided. See: services.unimelb.edu.au/finaid/planning/cost_of_living/summary

^⑤ This fee is for first-year undergraduate students and includes access to all the facilities of the College and participation in the weekly academic (tutorials), cultural, intellectual, social and sporting programs of the College. All meals are provided. Up to 40% of students receive a scholarship or bursary, which can reduce the average weekly rent by between \$100 and \$500. For more details, see: colleges.unimelb.edu.au/fees-and-scholarships

^⑥ Total estimated annual living cost including rent, utilities, internet, public transport and a varied number of meals (excludes course fees and incidentals).

UNDERGRADUATE STUDY AT MELBOURNE

The world's most ambitious minds choose the University of Melbourne, not just because we're ranked number one.

Our degrees aren't like most others you'll find in Australia. They're aligned with those offered by many top universities worldwide. You'll start with one of our broad-based undergraduate degrees. You can then choose to join the workforce or go onto specialised professional education at graduate level.

Our unique curriculum, with its embedded 'breadth' studies, empowers you to choose your direction and create a degree as unique as you are. This means your Melbourne experience is yours to shape. In a world where careers and industries are evolving at lightning speed, your independent and innovative thinking will set you apart from the rest.

Take the opportunity to study at our 200 partner institutions around the world. Our connections within government and the community as well corporate partnerships will bridge the gap between study and work with industry-based learning.

At Melbourne you'll network with a diverse, multi-cultural community of leading minds – your teachers and peers – who will enrich your perspective and broaden your horizons.

You'll be ready to enter the workforce career ready with an undergraduate degree. Or you can go onto specialised professional education at graduate level, or even undertake a research degree.

A University of Melbourne degree will help you build the right skills and global networks to adapt to whatever lies ahead. A distinct and outstanding education experience will prepare you for success as leaders, change agents and global citizens. You'll achieve all this while living in the heart of Melbourne – one of the world's most liveable cities.

As a world-leading university, employers seek out our students. Our graduates represent our greatest contribution to the world.

FIRST YEAR

In first year, you'll be able to explore a range of subject areas that you're interested in. You'll combine subjects within your discipline and outside of it too – giving you a breadth of knowledge that sets you apart. New First Year Discovery Subjects are also launching in 2022. By the time you choose your major, you'll be well informed.

SECOND AND THIRD YEARS

In second year, you'll start to focus on the study area which will become your major (if you haven't already), while still remaining flexible enough to explore. Outside of the classroom, second year is great for going on exchange, leading clubs, building industry networks and getting into lots of fun activities.

By third year, you will achieve a level of specialisation and could take part in a third year 'capstone' experience, designed to consolidate your learning and really prepare you for your career. Capstone subjects may involve work placements, project-based learning, a research project, or a coursework subject outlining business best practice.

See pages 12–13 for a full list of majors – we have over 100 available.

"I had always been interested in health sciences and was thrilled that the Melbourne curriculum allowed me to explore other options in undergraduate study, while meeting the prerequisites for the postgraduate physiotherapy course."

Kimberly Chian (Malaysia)

Bachelor of Biomedicine
Doctor of Physiotherapy

WHAT IS 'BREADTH'?

A breadth subject is one taken from outside your core studies or major. Most University of Melbourne undergraduates take breadth subjects.

Breadth will allow you to tailor your course to fit your individual passions and career ambitions. You might, for example, study science but take breadth in Mandarin Chinese – a great choice for a scientist looking to work internationally and help solve global issues. You can also use breadth to explore something you've always been curious about, whether it looks related to your major or not.

Some students find that taking a breadth subject ignites a passion they'd never known about. Others might use breadth to improve their career prospects by complementing their major with a language, communication skills, or business know-how. 'Breadth tracks' (groups of subjects taken throughout your degree) may even qualify you for graduate study in a field that's very different to your major.

CONCURRENT DIPLOMAS

Want to be an economics reporter with first-class programming skills or a side gig playing the cello? Concurrent diplomas allow you to study an extra qualification alongside your degree. This can enhance your employability and enable you to develop detailed knowledge in an area outside your main area of study.

We offer four concurrent diplomas:

- Diploma in Computing
- Diploma in Languages
- Diploma in Mathematical Sciences
- Diploma in Music

High-achieving students may be able to complete their degree and concurrent diploma within the three years of their degree, but studying a concurrent diploma typically will add six months or a year to your undergraduate full-time studies.

YOUR NEXT STEP: GRADUATE STUDY

When you're informed and ready, you can choose from hundreds of graduate study options. You'll get the full benefit of the graduate school experience by studying intensively, in small classes led by experts, and alongside others who share your deep interests and desire to succeed. Work towards a professional qualification (for example through the Juris Doctor), or join our world-changing researchers with a research higher degree. Your higher level graduate degree will be internationally recognised, and instantly distinguishes you from those who study a traditional Australian single or double undergraduate degree.

Find out more about graduate study at Melbourne on pages 14-15.

A DEGREE AS UNIQUE AS YOU



UNDERGRADUATE DEGREES AND MAJORS

A major, minor or a specialisation refers to a concentration of subjects that equips you with specialised knowledge in your chosen field of study.

BACHELOR OF AGRICULTURE

- Agricultural Economics
 - Plant and Soil Science
 - Production Animal Science
-

BACHELOR OF ARTS

- Ancient World Studies
- Anthropology
- Arabic Studies
- Art History
- Asian Studies
- Chinese Societies*
- Chinese Studies
- Classics
- Creative Writing
- Criminology
- Development Studies*
- Economics
- English and Theatre Studies
- English Language Studies*
- Environmental Studies*
- European Studies*
- French Studies
- Gender Studies
- Geography
- German Studies
- Hebrew and Jewish Studies
- History
- History and Philosophy of Science
- Indigenous Studies
- Indonesian Studies
- Islamic Studies
- Italian Studies
- Japanese Societies*
- Japanese Studies
- Knowledge and Learning*
- Korean Studies*
- Law and Justice*
- Linguistics and Applied Linguistics
- Media and Communications
- Medieval and Early Modern Studies*
- Philosophy
- Politics and International Studies
- Psychology
- Russian Studies
- Screen and Cultural Studies
- Sociology
- Spanish and Latin American Studies

* Study area available as a minor only.

BACHELOR OF BIOMEDICINE

- Biochemistry and Molecular Biology
 - Bioengineering Systems
 - Biotechnology
 - Cell and Developmental Biology
 - Genetics
 - Human Nutrition
 - Human Structure and Function
 - Immunology
 - Infection and Immunity
 - Microbiology
 - Neuroscience
 - Pathology
 - Pharmacology
 - Physiology
 - Psychology
-

BACHELOR OF COMMERCE

- Accounting
- Actuarial Studies
- Economics
- Finance
- Management
- Marketing



BACHELOR OF DESIGN

- Architecture
 - Civil Systems
 - Computing
 - Construction
 - Digital Technologies
 - Graphic Design
 - Landscape Architecture
 - Mechanical Systems
 - Performance Design
 - Property
 - Spatial Systems
 - Urban Planning
-

BACHELOR OF FINE ARTS SPECIALISATIONS

- Acting
 - Animation
 - Dance
 - Film and Television
 - Music Theatre
 - Production
 - Screenwriting
 - Theatre
 - Visual Art
-

BACHELOR OF MUSIC¹

- Composition
 - Interactive Composition
 - Jazz & Improvisation
 - Musicology and Ethnomusicology
 - Music Studies
 - Performance
-

BACHELOR OF ORAL HEALTH

- Dental science
 - Clinical Dentistry
 - Social Science and Preventative Dentistry
 - Vocational Clinical Practice
-

BACHELOR OF SCIENCE

- Agricultural Science
- Animal Health and Disease
- Animal Science and Management
- Biochemistry and Molecular Biology
- Bioengineering Systems
- Biotechnology
- Cell and Developmental Biology
- Chemical Systems
- Chemistry
- Civil Systems
- Climate and Weather
- Computing and Software Systems
- Data Science
- Ecology and Evolutionary Biology
- Ecosystem Science
- Electrical Systems
- Environmental Engineering Systems
- Environmental Science
- Food Science
- Genetics
- Geography
- Geology
- Human Nutrition
- Human Structure and Function
- Immunology
- Infection and immunity
- Marine Biology
- Mathematical Physics
- Mathematics and Statistics
- Mechanical Systems
- Mechatronics Systems
- Microbiology
- Neuroscience
- Pathology
- Pharmacology
- Physics
- Physiology
- Plant Science
- Psychology
- Spatial Systems
- Veterinary Bioscience
- Zoology

¹ The structure of this course is under review for 2022, pending Academic Board approval. Please refer to study.unimelb.edu.au/find for the latest information.

GRADUATE STUDY AT MELBOURNE

Graduate study is an investment in your future. Choose Melbourne, and join the best and brightest students to pursue your passion and develop your career.

You'll study alongside the most talented students in an environment focused on research impact and industry relevance. You'll be part of a university that is committed to changing lives by contributing to the policy, debate and skills required for a better global society.

We offer more than 400 higher level graduate courses across a broad range of disciplines, among them professional entry programs including the Juris Doctor (law), the Doctor of Medicine (MD), the Master of Teaching, the Master of Engineering and the Master of Architecture.

Our graduate study areas include:

- Architecture, building, planning and design
- Arts, humanities and social sciences
- Business and economics
- Education
- Engineering and information technology
- Environment
- Health
- Law
- Music, and visual and performing arts
- Science
- Veterinary and agricultural sciences.

Whether you're choosing your first career, changing direction or gaining that competitive edge, our world-class research and coursework graduate programs offer a professionally relevant education. Our graduates develop strong connections with community and industry that open the door to an outstanding future.

unimelb.edu.au/study/grad-degrees

GET A COMPETITIVE EDGE

A graduate degree can be a life-changing option. You'll be equipped with specialised cognitive and technical skills and an internationally recognised graduate qualification, setting you apart from those who study a traditional Australian single or double degree. In Australia, students with a graduate degree earn more, too – on average, 36 per cent, or more than \$23,000 extra per year.^①



**#7 IN THE WORLD FOR
EMPLOYABILITY**

- QS Graduate Employability Rankings 2020

THE GRADUATE SCHOOL EXPERIENCE

At Melbourne, you'll get the full benefit of the graduate school experience by studying intensively, in small classes led by experts and alongside others who share your deep interests and desire to succeed. Work towards a professional qualification (for example, through the Juris Doctor), or join our world-changing researchers with a research higher degree.



**51% UNDERGRADUATE
49% GRADUATE STUDENTS**

"University is where you meet people who might be your lifelong friends, your future colleagues or employers. Where you might find the meaning and love of your life and re-define your life goals."

Randi Julian Miranda (Indonesia)
Master of Environment



① Quality Indicators for Learning and Teaching,
2020 Graduate Outcomes Survey

RESEARCH AT MELBOURNE

Who says you can't change the world? We expect nothing less.

Our reputation as Australia's leading comprehensive research-intensive university enables us to attract and cultivate the most promising researchers from around the world.

We collaborate with industry partners, other institutions, research organisations, the community, and government and not-for-profit organisations to achieve research outcomes with global impact. We remain at the forefront of innovation in Australia.

Melbourne is a place where world-class researchers choose to work, and, as a graduate research student, you'll be supervised by leading experts in your field.

OUR RESEARCH DEGREES

Our graduate schools offer research programs in most major disciplines.

MASTER OF PHILOSOPHY

The Master of Philosophy (MPhil) is an internationally recognised masters degree by research and requires the completion of a thesis of 30,000-40,000 words.

MASTERS BY RESEARCH

Masters by research degrees differ from the MPhil in that they may have a coursework component, along with a shorter thesis of about 30,000 words.

DOCTOR OF PHILOSOPHY

Graduating with a Doctor of Philosophy (PhD) marks your admission to the community of scholars in your discipline and requires the completion of a thesis of 80,000-100,000 words on a specialised topic.

You will work under the guidance of at least two supervisors, who will provide advice and support throughout your research degree.

For help in finding supervisors, see: unimelb.edu.au/research-supervisors

OUTSTANDING SUPPORT

Research training is a core activity of the University. Our comprehensive support and award-winning professional development programs will help you become a more effective researcher. We offer access to dedicated research centres, advanced research facilities, generous scholarships and established student support networks.

unimelb.edu.au/study/graduate-research



SCHOLARSHIPS AND FEES

DOMESTIC STUDENTS

Most domestic graduate research students are funded by the Australian Government Research Training Program Fee Offset Scholarship (RTP), meaning you are exempt from paying tuition fees. Additional scholarships can provide annual living allowances, relocation grants and paid maternity, parental and sick leave.

INTERNATIONAL STUDENTS

More than 400 scholarships are available to international graduate researchers. Many cover tuition fees, as well as a living allowance and paid maternity, parental and sick leave.

scholarships.unimelb.edu.au



HOW TO APPLY FOR GRADUATE RESEARCH STUDY

STEP 1 Check your eligibility.

STEP 2 Find potential projects and supervisors at findanexpert.unimelb.edu.au
Contact potential supervisor for support (if required).

STEP 3 Prepare your documentation: proposal (if required), transcripts, cover letter, academic referees, English language test results (if required), supervisor support correspondence (if required) and any other additional requirements for your discipline (eg GMAT/GRE, audition, portfolio).

STEP 4 Submit your application and wait for the outcome.

STEP 5 If you receive an offer, you can then accept your place and prepare to start your life at Melbourne.

Find out more at study.unimelb.edu.au/how-to-apply/graduate-research



PATHWAYS TO PROFESSIONAL CAREERS

Combining undergraduate and graduate study at the University of Melbourne is a pathway to limitless opportunity. Here are just some of the doors it can open across our broad range of study areas. For entry requirements and more information about pathways and where they can take you, visit study.unimelb.edu.au

Undergraduate degree by study area		Graduate degree		Your career	
Agricultural science					
Any undergraduate degree	3 years	>	Master of Agricultural Sciences	2 years	> Agricultural scientist
Architecture					
Bachelor of Design (major in Architecture) OR Any degree with an Architecture Design Studio subject and an Architecture History subject (requires 3 years for Master of Architecture)	3 years	>	Master of Architecture	2 years	> Architect
Data science					
Any undergraduate degree with a major in data science, computing and software systems or mathematics and statistics	3 years	>	Master of Data Science	2 years	> Data scientist
Dentistry					
Bachelor of Biomedicine or Science Bachelor of Arts, subject to completing prerequisite subjects, and course plan approval by home faculty	3 years	>	Doctor of Dental Surgery	4 years	> Dentist
Engineering					
Bachelor of Biomedicine, Design or Science with an engineering major Students in any other undergraduate degree are eligible to progress into the 3-year Master of Engineering, subject to completing prerequisite subjects	3 years	>	Master of Engineering	2 years	> Engineer
Environment					
Any undergraduate degree	3 years	>	Master of Environment	2 years	> Environmental policy consultant
Film and television					
Any undergraduate degree	3 years	>	Master of Film and Television (Documentary or Narrative)	2 years	> Film or television director
Financial analysis					
Bachelor of Commerce	3 years	>	Master of Finance	2 years	> Financial analyst
Information technology					
Bachelor of Design or Science with an IT major eg Bachelor of Science with major in Computing and Software Systems	3 years	>	Master of Engineering (Software)	2 years	> Software engineer

UNDERGRADUATE DEGREE BY STUDY AREA				GRADUATE DEGREE			YOUR CAREER		
International relations									
Any undergraduate degree		3 years	➤	Master of International Relations		2 years	➤	International relations professional	
Journalism									
Any undergraduate degree		3 years	➤	Master of Journalism		2 years	➤	Journalist	
Law									
Any undergraduate degree		3 years	➤	Juris Doctor		3 years	➤	Lawyer	
Medicine									
Any undergraduate degree Students complete a one-year internship following the Doctor of Medicine in order to obtain full registration as a doctor		3 years	➤	Doctor of Medicine		4 years	➤	Doctor	
Nursing									
Any undergraduate degree		3 years	➤	Master of Nursing Science		2 years	➤	Nurse	
Optometry									
Undergraduate degree with prerequisite subjects		3 years	➤	Doctor of Optometry		4 years	➤	Optometrist	
Physiotherapy									
Undergraduate degree with prerequisite subjects		3 years	➤	Doctor of Physiotherapy		3 years	➤	Physiotherapist	
Psychology									
Bachelor of Arts, Biomedicine or Science with an accredited major in Psychology	3 years	➤	Fourth-year honours or Graduate Diploma (Advanced) in Psychology	1 year	➤	Master of Psychology	2 years	➤	Clinical psychologist OR Clinical neuropsychologist
Research									
Any undergraduate degree	3 years	➤	Graduate degree OR Honours	2 years	➤	Doctor of Philosophy OR	3 years	➤	Researcher
				1 year		Master of Philosophy	1.5–2 years		
Teaching									
Any undergraduate degree (with TCAT assessment) Part-time and accelerated options available		3 years	➤	Master of Teaching (Early Childhood, Primary, Early Childhood and Primary, or Secondary)		2 years	➤	Teacher	
Veterinary medicine									
Bachelor of Agriculture, Biomedicine or Science with at least one semester of study in both general/cellular biology and biochemistry 3 year option for graduates of Bachelor of Science with Veterinary BioSciences● major		3 years	➤	Doctor of Veterinary Medicine		3–4 years	➤	Vet	

① The Veterinary Bioscience major is only available to students who have received a provisional/conditional course offer to commence the Doctor of Veterinary Medicine following successful completion of the Bachelor of Science. For BSc students intending to apply for the Doctor of Veterinary Medicine via the Veterinary Bioscience major it is a requirement that students have previously completed VCE Physics Units 3/4 or equivalent, or a 12.5 point Level 1 Physics subject. Students must complete four breadth subjects over the first two years of the Bachelor of Science degree. Students may complete one or two breadth subjects at first year level and two or three breadth subjects at second year level.

YOUR STUDENT EXPERIENCE

As a University of Melbourne graduate, you'll be highly sought after. That's because our students can build their experience and networks from day one.

There are many ways to incorporate practical experience into your studies at Melbourne. You can intern at one of the world's most influential organisations, gain international experience, start a business, volunteer with organisations that inspire you, work part time and gain valuable skills while you study, or all of the above!

Whether you have a dream career or want to explore your options first, we will be there to support you to achieve your very best.

PRACTICAL EXPERIENCE

Internships are a great way to get first-hand industry experience and figure out if your dream career is right for you. Our students intern in leading companies and institutions in Australia and abroad, paving the way to fulfilling and exciting careers.

YOUR LEADERSHIP AND NETWORKING OPPORTUNITIES

Employers love to see leadership experience on your resume – and we love to help you get it! Lead a student group, direct a play, mentor a younger student or help run one of over 200 clubs and societies to make connections and build your networks.

MAKE A DIFFERENCE

Take your skills into the community, contribute to a cause you are passionate about and make a difference! You can volunteer in Australia or overseas. In many cases your experience can count towards your degree, and we offer awards and grants to help finance your volunteer work.

SKILL BUILDING

The Global Leadership and Employability team provides programs and services to students free of charge, including screened job listings, workshops, industry events and connections with alumni. You can even attend a free Career Bootcamp. In addition, many faculties offer seminars, practical training, networking events and more to help you break into a great career.

STUDENT LIFE AT MELBOURNE

Students are at the heart of the University of Melbourne community which is focused on creating a vibrant, diverse and welcoming environment that provides excellent teaching and learning opportunities and rich University experience, that leads to intellectual development and personal growth.

Through the new Student Life program, you will be:

- Guided through your transition to University with Faculty specific inductions, the Melbourne Commencement Ceremonies, Melbourne Peer Mentor Program and First Year Discovery Subjects
- Mentored throughout your degree by our network of advisers and mentors who can provide personalised advice, including:
 - Regular meetings with your peer mentor and a small group of peers from your discipline
 - An academic adviser, a member of staff such as a lecturer or a professor, who will take an active interest in your progress, success and challenges throughout your degree
 - Access to alumni and industry mentors to explore career and graduate study options
- Recognised for responding to the needs of the local and global community through volunteering, service and social entrepreneurship as part of the Melbourne Plus program
- Able to enhance your studies with a Capstone Experience which brings together the skills and knowledge you have developed during your degree.

MELBOURNE COMMENCEMENT CEREMONY (MCC)

The MCC marks the beginning of your journey as a University of Melbourne student and is a core feature of the Melbourne Orientation experience. It signals the start of your studies in the same way that your graduation will celebrate your completion at the end of your degree. You'll be welcomed by University leaders, guest speakers and industry influencers and meet your first-year peers within your faculty community.

MELBOURNE PEER MENTOR PROGRAM

You'll be matched with a later-year student from your faculty, as well as a group of your first-year peers, in an instant network of friendly faces to touch base with as you transition into university life. Benefit from an insider's experience, ask for advice and guidance in navigating uni life and make friends with other students in your degree. You'll have the chance to develop your leadership and interpersonal skills in your third year by becoming a peer mentor yourself.

ACADEMIC ADVICE MENTORING

From your second semester, you'll have appointments with an academic from your discipline or major area. They'll help you to identify areas of academic strength and personal interest for you to explore, and provide advice on how to take advantage of our global mobility and co-curricular opportunities.

Your academic adviser will be with you throughout your undergraduate degree to check in on your progress and help you in making decisions about major selections and internships, as well as looking beyond the end of the degree to careers and further study.

DISCOVERY EXPERIENCES

Your Discovery experiences will introduce you to the University community so you can become a thriving participant. These include understanding the University's role in Melbourne, Australia and globally; the importance of Indigenous heritage, knowledge and culture; respect for diversity and inclusion in and outside of the classroom; sustainability; as well as introducing you to the exciting cutting edge research happening in your study area.

study.unimelb.edu.au/discover/life-at-melbourne

CLUBS AND SOCIETIES

Proudly multicultural, our diverse student community is represented by more than 200 clubs and societies. Joining a club or society allows you to continue some of the extracurricular activities you already love, find a new interest or meet like-minded friends from within or outside of your degree.

SCHOLARSHIPS



We offer more than 1200 scholarships for new and current students.

The Melbourne Scholarships Program is one of the most comprehensive and generous in Australia.

We encourage you to challenge yourself and try out different ways of thinking. Our scholarships are just one way we inspire you to follow your curiosity and study what you love, because that's how you thrive.

At the University of Melbourne, we're all different. We come from different places, have different passions and ambitions. That's why we offer a huge variety of scholarships, from those awarded on merit, others to help with your expenses and some help you travel the globe. There are scholarships to support your whole course or help you explore a specific interest. Wherever you are, and whatever your passion, with a Melbourne scholarship you can turn ambition into achievement.

In addition to our scholarships, we offer many prizes, grants and bursaries helping you get the most out of your time at university. Most of these are awarded to continuing students at different points in their studies.

Grants are available to undertake volunteering or leadership activities. Excel in your studies and you could pick up a coveted prize for academic achievement. Bursaries are also available for a variety of needs and can ease the financial pressures of uni so you can focus on your studies.

MELBOURNE CHANCELLOR'S SCHOLARSHIP

If you're in your final year of high school and expecting a high score, make the most of it with a Melbourne Chancellor's Scholarship: the flagship award in our broad program of scholarships for high achievers.

MELBOURNE INTERNATIONAL UNDERGRADUATE SCHOLARSHIP

For high-achieving international students, fee remissions worth up to \$56,000 are available through the Melbourne International Undergraduate Scholarship.

ELITE ATHLETE PROGRAM

If you excel in sport, our Elite Athlete Program offers generous scholarships to help you pursue your sporting dreams as well as your academic aspirations.

MELBOURNE GRADUATE SCHOLARSHIP

For high achieving international students undertaking graduate study at the University of Melbourne, this scholarship offers between 25 to 100% fee remission.

High achieving international graduate students will also automatically be considered for:

- International Postgraduate Coursework Award
- Asian Development Bank - Japan Scholarship

For more information about all available scholarships, visit scholarships.unimelb.edu.au

HOW TO APPLY

INTERNATIONAL STUDENTS

OBTAINING A VISA

Most international students require a student visa to study in Australia. There are a number of different types of student visas based on the type of course you will be studying. Check the website of the Australian Department of Home Affairs for details:

homeaffairs.gov.au/trav/stud

ESOS: PROTECTING INTERNATIONAL STUDENTS

The Australian Government is committed to ensuring you have a great education experience. The Education Services for Overseas Students Act 2000 (the ESOS Act) and related laws set out the requirements for education institutions that deliver education services to international students on a student visa.

These laws exist to protect international students and ensure you meet student visa conditions for attending classes and making satisfactory progress in your studies while in Australia.

To find out more about your rights and your responsibilities, go to:

services.unimelb.edu.au/international/visas/esos

WORKING WHILE STUDYING

If you wish to work while you are studying, you must hold a visa with permission to work. This allows you to work for a maximum of 40 hours per fortnight while your course is in session and for unlimited hours during vacation periods. Classes are considered to be in session from the first day of semester until the last day of the examination period. Work restrictions vary for family members on student visas.

DOMESTIC STUDENTS STUDYING OUTSIDE AUSTRALIA

If you are an Australian or New Zealand citizen or an Australian permanent resident, then you are considered a domestic student for the purposes of admission to the University. All domestic undergraduate applicants, regardless of where you complete your secondary schooling, must apply for entry to the University through the Victorian Tertiary Admissions Centre (VTAC).

To find out more visit:

go.unimelb.edu.au/cvk6

ALL OTHER INTERNATIONAL STUDENTS

STEP 1 APPLY DIRECT

Submitting an application to the University of Melbourne is easy – you can fill out an online application.

We will contact you directly to advise you of the outcome of your application or let you know if additional information is required

study.unimelb.edu.au/how-to-apply

You can also accept your offer and apply for a student visa online.

APPLY THROUGH AN OFFICIAL OVERSEAS REPRESENTATIVE

If you would prefer an approved agent to submit an application on your behalf, you can use one of the University's official overseas representatives (education agents) in your country.

Our education agents can be found in over 70 countries and 300 cities around the world. They can help with lodging an application, accepting your offer, or applying for a student visa (if you are admitted to the University).

For further information about their costs, services and contact details, go to:

study.unimelb.edu.au/how-to-apply/find-an-overseas-representative

STEP 2

Provide a copy of your academic results to the University as part of your online application. If you are currently studying, you may be required to submit your final results (when they become available) before a complete assessment can be made.

STEP 3

You will receive an outcome letter via email, normally within four weeks of the University receiving your complete application. If we require further information or documentation, you will be notified and processing will proceed once the missing details are provided.

STEP 4

Complete the steps outlined in your emailed letter of offer, including completing your personalised offer acceptance form and providing your tuition fee deposit and Overseas Student Health Cover payment. For more information about how to accept your offer, go to:

students.unimelb.edu.au/get-started

STEP 5

Receive your Confirmation of Enrolment (COE) document, which you require to obtain your student visa.



ADMISSIONS

UNDERGRADUATE COURSES

TUITION FEES

Typical course fees are listed in the table on page 19. Visit the website for more information.

study.unimelb.edu.au/how-to-apply/fees

HOW TO APPLY

If you are an international student studying a qualification outside Australia, or undertaking foundation studies in Australia, you can apply online.

Timely applications for the standard offer rounds of most degrees are:

Semester 1: 30 November

Semester 2: Mid June

If required, you can seek assistance from one of our official overseas representatives.

study.unimelb.edu.au/how-to-apply

INTERNATIONAL STUDENTS STUDYING AN AUSTRALIAN YEAR 12

If you are an international student undertaking an Australian Year 12, you must apply through the Victorian Tertiary Admissions Centre (VTAC).

study.unimelb.edu.au/how-to-apply

FOUNDATION STUDIES

The University of Melbourne accepts a number of foundation studies programs as entry pathways to our undergraduate courses. Approved Foundation Studies programs are listed on our Study website.

TRINITY COLLEGE FOUNDATION STUDIES

Graduates of Trinity College Foundation Studies are guaranteed a place in the University of Melbourne course of their choice if they satisfy the prerequisites and meet the required scores.

Trinity offers accelerated and extended programs to meet your individual needs, and the curriculum is supervised by the University of Melbourne's Academic Board. The College is ideally located near the University's Parkville campus.

trinity.unimelb.edu.au/tcfs

GRADUATE COURSES

TUITION FEES

Visit the website for more information.

study.unimelb.edu.au/how-to-apply/fees

HOW TO APPLY

Coursework degrees: Most courses accept online applications made directly to the University. Applications for Fine Arts and Music, Education, Business, Medicine and Law may also require completion of specific application forms and/or have additional requirements.

Timely applications for the standard offer rounds of most degrees are:

Semester 1: 31 October

Semester 2: 30 April

Some courses have early closing dates, and not all courses are available in Semester 2. Please check the course details online before applying. If required, you can seek assistance from one of our overseas representatives.

study.unimelb.edu.au/find

RESEARCH DEGREES

Applications for a research place are usually accepted throughout the year. Have a look on our website for specific course application closing dates. Note that entry requirements vary between degrees, so make sure you check with the relevant graduate school.

unimelb.edu.au/study/graduate-research

ENGLISH LANGUAGE REQUIREMENTS

ENGLISH LANGUAGE TEST

You can use an approved English language test to meet English language requirements. You must satisfy the requirements in one sitting within the 24 months preceding the proposed date of commencement of enrolment.^①

Approved English language test	Required score (all undergraduate courses) ^②
IELTS (Academic)	Overall band score of 6.5 or more (with no band less than 6.0)
TOEFL: Paper-based	577 or more with TWE score of at least 4.5
	Internet-based 79 or more and scores of 21 in Writing, 18 in Speaking, 13 in Reading and 13 in Listening
Pearson Test of English (Academic)	Overall score between 58 and 64 inclusive and no PTE communicative skills score below 50
Cambridge English: Advanced/ Certificate in Advanced English (CAE)	CAE score of 176 with no skill less than 169

SECONDARY OR TERTIARY STUDIES IN ENGLISH

You can meet the English language requirements for undergraduate study by satisfactorily completing secondary studies in an approved final-year English subject, or through approved tertiary study in English. Further information about the University's English language requirements, including graduate requirements, is available at unimelb.edu.au/study/english-reqs

OBTAINING A VISA

Most international students require a student visa to study in Australia. There are a number of different types of student visas based on the type of course you will be studying. Check the website of the Australian Department of Home Affairs.

homeaffairs.gov.au/trav/stud

^① Due to the COVID-19 pandemic, the English language test expiration is extended from 2 years to 3 years for the IELTS, TOEFL and Pearson PTE Academic tests and apply for commencement in 2021. This will be reviewed once COVID-19 restrictions are lifted.

^② To see graduate English language requirements, please see: study.unimelb.edu.au/how-to-apply/english-language-requirements/graduate-english-language-requirements

^③ You must achieve the following scores to meet the English language requirement for the Bachelor of Oral Health: **TOEFL** (internet-based): total score of at least 94 and scores of at least 27 for writing, 23 for speaking, 24 for reading and 24 for listening. To submit your scores when you apply, use our TOEFL Institution Code: 0974. **IELTS**: total score of at least 7.0 in the Academic International English Language Testing System (IELTS), with no bands less than 7.0. **Pearson Test of English**: overall score of at least 65 and achieve no PTE communicative skills score below 65.

UNDERGRADUATE ENTRY REQUIREMENTS AND COURSE FEES

This table provides a quick summary of our undergraduate degrees and should be used as a guide only.

	DURATION (EFTSL) ^①							
		Australian Year 12 international students: 2022 guaranteed ATAR ^②	International Baccalaureate international students: 2022 guaranteed IB score ^③	GCE A Levels Singapore A Levels international students: 2022 guaranteed A Level ^④	Trinity College Foundation Studies international students: 2022 guaranteed TCFS score ^{⑤ ⑥}	Australian University Foundation Programs international students: indicative score ^{⑤ ⑥}	USA – High School Diploma GPA, SAT and ACT ^{⑦ ⑧}	USA - High School Diploma GPA + Advanced Placement (AP) exams ^{⑦ ⑧}
Bachelor of Agriculture Entry: February (Semester 1)	3	70.00	25	CDD	75	76	GPA 3.0 and SAT 1250 / ACT 26 and a score of 3+ in 2 or more AP examinations	GPA: 3.0 and AP aggregate: 9 (from a minimum of 3 and maximum of 4 AP examinations)
Bachelor of Arts Entry: February (Semester 1) and July (Semester 2)	3	85.00	31	BCC	80	83	GPA 3.2 and SAT 1320 / ACT 28 and a score of 3+ in 2 or more AP examinations	GPA: 3.2 and AP aggregate: 13 (from a minimum of 3 and maximum of 4 AP examinations)
Bachelor of Biomedicine Entry: February (Semester 1) and July (Semester 2)	3	95.00	37	AAB	91	93	GPA 3.6 and SAT 1400 / ACT 30 and a score of 3+ in 2 or more AP examinations	GPA: 3.7 and AP aggregate: 18 (from 4 AP exams)
Bachelor of Commerce Entry: February (Semester 1) and July (Semester 2)	3	94.00	36 ^⑨	ABB ^⑨	86 ^⑨	89 ^⑨	GPA 3.5 and SAT 1380 / ACT 29 and a score of 3+ in 2 or more AP examinations	GPA: 3.5 and AP aggregate: 17 (from 4 AP exams)
Bachelor of Design Entry: February (Semester 1) and July (Semester 2)	3	85.00	31	BCC	80	83	GPA 3.2 and SAT 1320 / ACT 28 and a score of 3+ in 2 or more AP examinations	GPA: 3.2 and AP aggregate: 13 (from a minimum of 3 and maximum of 4 AP examinations)
Bachelor of Fine Arts Entry: February (Semester 1)	3	^⑩	^⑩	^⑩	^⑩	^⑩	^⑩	^⑩
Bachelor of Music Entry: February (Semester 1) and July (Semester 2) ^⑪	3	^⑩	^⑩	^⑩	^⑩	^⑩	^⑩	^⑩
Bachelor of Oral Health Entry: February (Semester 1)	3	N/A	31 ^⑫	BCC ^⑫	80 ^⑫	83 ^⑫	GPA 3.2 and SAT 1320 / ACT 28 and a score of 3+ in 2 or more AP examinations	GPA: 3.2 and AP aggregate: 13 (from a minimum of 3 and maximum of 4 AP examinations)
Bachelor of Science Entry: February (Semester 1) and July (Semester 2)	3	85.00	31	BCC	80	83	GPA 3.2 and SAT 1320 / ACT 28 and a score of 3+ in 2 or more AP examinations	GPA: 3.2 and AP aggregate: 13 (from a minimum of 3 and maximum of 4 AP examinations)
Melbourne Chancellor's Scholarship Entry: February (Semester 1) and July (Semester 2)	3	99.90 (99.85 for Music) ^⑬	99.90 (99.85 for Music) ^⑬	N/A	N/A	N/A	N/A	N/A

① Equivalent Full-Time Student Load (EFTSL):

1 EFTSL is a standard annual full-time load.

- ② Domestic students:** Applicants who achieve the minimum Australian Tertiary Admission Rank (ATAR) for a course will be eligible for consideration for a place, provided prerequisite studies and any other specific course requirements are met. The lowest selection ATAR to which an offer was made may be higher, depending on demand for the course and the number of places available. Only applicants eligible for special entry schemes will be admitted below the minimum ATAR.

- ③ International students:** The University guarantees admission to a course when an international student achieves the required score, meets prerequisite studies, satisfies the English language requirements and there are still places available in the course at the time of acceptance. If you do not meet the guaranteed score, your application will not be considered for entry.

Guaranteed scores apply only if no further study has been undertaken after completion of one of these programs. Guaranteed ATARs are reviewed annually.

Domestic students completing an international qualification:

The score listed should be considered a minimum score to be eligible for a place in that course. The actual standard required may be higher depending on the demand for the course and the number of Commonwealth Supported Places (CSP) available.

- ④ Round 1 lowest selection ATAR including relevant adjustments, to which an offer was made:** Final 2021 lowest selection ATAR to which offers were made are published at: vtac.edu.au

- ⑤** International students must achieve at least the indicative score, meet the prerequisite subjects and satisfy the English language requirements to be eligible to be considered for the course. For domestic students completing an international qualification, the score listed should be considered a minimum score to be eligible for a place in that course.

- ⑥** A minimum of 50 is required in English for Academic Purposes (EAP) and prerequisite subjects unless otherwise specified. The score is calculated using the best four subjects excluding EAP. Maths 1 is included in the best four score for Commerce; and English and History of Ideas are included for Arts.

The final average is usually the average of the best four year-long subjects, including prerequisites for some courses. For UNSW, the GPA on the final transcript is used. For WAUFP, the CPS is used and different scores apply.

- ⑦** To meet the prerequisites, students must complete the required AP subject/s listed and achieve a score of at least 3 in the US College Board AP exam. AP scores below 3 are not included in the aggregate score. GPA required is based on the Year 12 GPA in the USA High School Diploma from an accredited school. For further information about entry scores for the USA High School Diploma GPA, SAT and ACT, please visit: study.unimelb.edu.au/find

For graduate entry requirements, please visit: study.unimelb.edu.au/find

PREREQUISITE SUBJECTS	TUITION FEES DOMESTIC	TUITION FEES INTERNATIONAL
A-levels, IB Diploma , AP and VCE subjects Refer to study.unimelb.edu.au/find for prerequisites relating to other qualifications.	Commonwealth Supported Place	2022 typical course fee for first year (\$AUD/EFTSL) ① ③
A-levels: Mathematics and at least Grade C in an approved A or AS Level English subject IB: English, and a minimum grade of 4 in either Applications and interpretations HL, Analysis and approaches SL, or Analysis and approaches HL; or a minimum grade of 5 in Applications and interpretations SL AP: AP Calculus AB or AP Calculus BC, AP English Language and Composition or AP English Literature and Composition VCE: A study score of at least 25 in English/English Language/Literature or at least 30 in EAL, and at least 25 in Mathematical Methods or Specialist Mathematics or a study score of at least 30 in Further Mathematics	✓	\$46,680
A-levels: An approved A or AS Level English subject. Applicants intending to major in Economics are strongly encouraged to complete Mathematics ⑩ IB: English. Applicants intending to major in Economics are strongly encouraged to complete either Applications and interpretations HL, Analysis and approaches SL, or Analysis and approaches HL ⑩ AP: AP English Language and Composition or AP English Literature and Composition. Applicants intending to major in Economics are strongly encouraged to complete AP Calculus AB or AP Calculus BC VCE: A study score of at least 25 in English/English Language/Literature or at least 30 in EAL. Applicants intending to major in Economics are strongly encouraged to complete Mathematical Methods or equivalent ⑩	✓	\$35,200-\$40,216
A-level: Chemistry, Mathematics and an approved A or AS Level English subject IB: English, Chemistry and a minimum grade of 4 in either Applications and interpretations HL, Analysis and Approaches SL, or Analysis and Approaches HL AP: AP Chemistry, and AP Calculus AB or AP Calculus BC and AP English Language and Composition or AP English Literature and Composition VCE: A study score of at least 25 in English/English Language/Literature or at least 30 in EAL, and at least 25 in Chemistry and in Mathematical Methods or Specialist Mathematics	✓	\$44,760-\$47,056
A-level: Mathematics and an approved A or AS Level English subject IB: English, and a minimum grade of 4 in either Applications and interpretations HL, Analysis and approaches SL, or Analysis and approaches HL AP: AP Calculus AB or AP Calculus BC and AP English Language and Composition or AP English Literature and Composition VCE: A study score of at least 25 in English/English Language/Literature or at least 30 in EAL, and at least 25 in Mathematical Methods or Specialist Mathematics ⑪	✓	\$42,520-\$45,412
A-level: An approved A or AS Level English subject. Applicants intending to major in Civil Systems, Computing, Construction, Mechanical Systems, Property or Spatial Systems may be required to undertake a bridging subject in mathematics as breadth in first year. This is equivalent to A-level Mathematics. Entry to the bridging subject does require a mathematics background equivalent to VCE Units 1 and 2 Mathematics. IB: English. Applicants intending to major in Civil Systems, Computing, Construction, Mechanical Systems, Property or Spatial Systems may be required to undertake a bridging subject in mathematics as breadth in first year. This is equivalent to Applications and interpretations HL, Analysis and approaches SL, or Analysis and approaches HL. Entry to the bridging subject does require a mathematics background equivalent to VCE Units 1 and 2 Mathematics. AP: AP English Language and Composition or AP English Literature and Composition. Applicants intending to major in Civil Systems, Computing, Construction, Mechanical Systems, Property or Spatial Systems may be required to undertake a bridging subject in mathematics as breadth in first year. This is equivalent to AP Calculus AB or AP Calculus BC. Entry to the bridging subject does require a mathematics background equivalent to VCE Units 1 and 2 Mathematics. VCE: A study score of at least 25 in English/English Language/Literature or at least 30 in EAL. Applicants intending to major in Civil Systems, Computing, Construction, Mechanical Systems, Property or Spatial Systems may be required to undertake a bridging subject in mathematics as breadth in first year. This is equivalent to Units 3 and 4 Mathematical Methods, and entry requires a mathematics background equivalent to Units 1 and 2 Mathematical Methods ⑫	✓	\$35,488-\$46,704
A-level: An approved A or AS Level English subject IB: English VCE: A study score of at least 25 in English/English Language/Literature or at least 30 in EAL AP: AP English Language and Composition or AP English Literature and Composition	✓	\$31,328-\$55,100 Animation and Film and Television: \$55,100 Other specialisations: \$31,328
A-level: An approved A or AS Level English subject IB: English VCE: A study score of at least 25 in English/English Language/Literature or at least 30 in EAL AP: AP English Language and Composition or AP English Literature and Composition	✓	\$32,296-\$34,592
A-level: Biology or Chemistry and at least Grade B in an approved A or AS Level English subject IB: English and one of Biology or Chemistry AP: AP Biology or AP Chemistry and AP English Language and Composition or AP English Literature and Composition VCE: A study score of at least 25 in English/English Language/Literature or at least 30 in EAL, and at least 25 in one of Biology or Chemistry	✓	\$64,152
A-level: An approved A or AS Level English subject, Mathematics and one of Biology, Chemistry or Physics, OR An approved A or AS Level English subject and both Mathematics and Further Mathematics IB: A minimum grade of 4 in either Applications and interpretations HL, Analysis and approaches SL, or Analysis and approaches HL. A minimum grade of 4 in one of Biology, Chemistry or Physics at HL or SL AP: AP English Language and Composition or AP English Literature and Composition, AP Calculus AB or AP Calculus BC, and one of AP Chemistry, AP Biology or AP Physics 1 and 2 OR; AP English Language and Composition or AP English Literature and Composition and both AP Calculus AB and AP Calculus BC VCE: A study score of at least 25 in English/English Language/Literature or at least 30 in EAL, and at least 25 in Mathematical Methods or Specialist Mathematics, and in one of Biology, Chemistry or Physics; OR A study score of at least 25 in English/English Language/Literature or at least 30 in EAL, and at least 25 in both Mathematical Methods and Specialist Mathematics ⑬	✓	\$43,660-\$47,528
See prerequisites for relevant degree. Program only available for students who completed Year 12 or the IB in Australia, and Australian citizens who completed an Australian Year 12 or the IB overseas	✓	⑭

- ③ **International students:** The typical course fee shown provides an estimate of the tuition fees for the first year of the course in 2021. This estimate assumes a full-time study load, commencing Semester 1. For some degrees a typical fee range is shown, due to the wide range of variables that may affect the course structure, and subjects taken. Actual tuition fees payable may vary and will be the sum of the fees for all subjects in which you enrol.
- ⑤ **Domestic students:** Eligible domestic students who satisfy course prerequisites and achieve an ATAR of 95.00 or above are guaranteed a place in the Bachelor of Commerce in 2022.
- International students:** Recipients of the Bachelor of Commerce Global Scholarship may be admitted with an entry score that is lower than that published here. This scholarship is available only to international students. For more details, see: study.unimelb.edu.au/bcom-global-scholarship
- ⑩ Applicants intending to major in Economics are strongly encouraged to complete VCE Mathematical Methods or equivalent.

- ① Applicants intending to major in Actuarial Studies or continue on to the Master of Engineering following the Bachelor of Commerce are strongly encouraged to complete VCE Specialist Mathematics Units 3 and 4 or equivalent.
- ② A range of criteria is used for selection. Visit study.unimelb.edu.au for additional requirements.
- ③ International and domestic transferring students only.
- ④ Indicative score only (entry is not guaranteed).
- ⑤ **Arts, Biomedicine, Commerce, Design and Science:** Students who achieve an ATAR or notional ATAR of 99.90 or above (or 90.00 or above if Indigenous) and satisfy course prerequisites will be guaranteed a Melbourne Chancellor's Scholarship. Students must have completed an Australian Year 12 qualification or the International Baccalaureate (IB) in Australia or be an Australian citizen and have completed an Australian Year 12 or IB overseas in the year prior to entry (students must either enrol immediately or be granted a deferral in the year following Year 12).

- Music:** Students who achieve an ATAR or notional ATAR of 99.85 or above (or 90.00 or above if Indigenous), achieve an audition score of A+ and satisfy course prerequisites will be guaranteed a Melbourne Chancellor's Scholarship (Music).
- Students must have completed an Australian Year 12 qualification or the International Baccalaureate (IB) in Australia or be an Australian citizen and have completed an Australian Year 12 or IB overseas in the year prior to entry (students must either enrol immediately or be granted a deferral in the year following Year 12).
- ⑮ Applicants intending to major in Civil Systems, Computing, Construction, Digital Technologies, Mechanical Systems, Property or Spatial Systems may be required to undertake a bridging subject in mathematics as breadth in first year. This is equivalent to Units 3 and 4 Mathematical Methods, and entry requires a mathematics background equivalent to Units 1 and 2 Mathematical Methods.
- ⑰ Applicants intending to progress to the Doctor of Veterinary Medicine are encouraged to complete VCE Units 3 and 4 in Chemistry or equivalent.
- ⑱ Refer to tuition fees for the relevant bachelors degree.


CONNECT WITH US


GET IN TOUCH

If you're considering studies at the University of Melbourne, we'd love to hear from you online or meet you on campus.

Sign up and submit enquiries online at:
study.unimelb.edu.au/connect-with-us

For information on our courses and entry requirements contact Stop 1

 Call 13 MELB (13 6352)
+ 61 3 9035 5511

 Visit us at Stop 1 (Parkville):
757 Swanston Street
The University of Melbourne
Victoria 3010 Australia

CRICOS Provider Code: 00116K

Intellectual property: Copyright in this publication is owned by the University and no part of it may be reproduced without the permission of the University.
Disclaimer: The University endeavours to ensure that information contained in this publication is current and correct at the time of production (August 2021).

RFQ04435