

文件下载自万友教育网站

版权归学校所有

www.oneuedu.com

万友优势 ADVANTAGE



客户信息私密性

录入系统后自动设置权限，除专属的案件专员其他内部人员及外部人员不可见



精英团队

文案专员为每位学生一对一定制专属方案，移民律师外部协助。团队为学生带来高质量服务



学生案件更新通知

当文案专员每完成一步，会更新在万友系统中，客户会以邮件的形式收到步骤更新通知，查看自己案件的最新进程



全程服务透明

无押金等不必要条款，客户案件信息透明，收费项会在案件开始前与客户协商一致，案件开始后无特殊意外情况，不会产生收费项目

提供服务 PROVIDE SERVICES

学校
查询

课程
查询

学生
签证

留学
准备

出发
准备

绿卡
资讯



详细流程请扫码
添加客服为您解答



2022 INTERNATIONAL GUIDE

UNIVERSITY OF
SOUTH AUSTRALIA



University of
South Australia



RANKED IN THE WORLD'S TOP 50 UNDER 50

Ranked #29, 2021 QS Top 50 Universities Aged Under 50

Ranked #45, 2021 THE Young University Rankings



#2 IN AUSTRALIA FOR QUALITY EDUCATION

2021 THE University Impact Rankings



100% OF OUR ASSESSED RESEARCH RATED AT OR ABOVE WORLD-CLASS

2018 Excellence in Research for Australia (ERA), 4-digit Fields of Research



RANKED IN THE TOP 40 BEST UNIVERSITIES IN THE ASIA-PACIFIC

Ranked #36, 2019 THE Asia-Pacific University Rankings



OVERALL FIVE STAR PLUS RATING FOR EXCELLENCE

Rated Five Stars for Excellence in Research, Employability, Teaching, Facilities, Internationalisation, Inclusiveness and Innovation

2020 QS Stars Ratings

The journey starts *here*

Welcome to the University of South Australia. We are a globally connected and engaged university helping solve the problems of industry and the professions. Our teaching is industry-informed, our research is inventive and adventurous. We create knowledge that is central to global economic and social prosperity. Our graduates are the new professionals, global citizens at ease with the world and ready to create and respond to change.

**We are Australia's
University of Enterprise.**



**TOP 10 YOUNG UNIVERSITY
IN AUSTRALIA**

Ranked #9, 2021 THE Young University Rankings



**TOP 10 YOUNG UNIVERSITY IN
AUSTRALIA FOR TEACHING QUALITY**

Ranked #9, 2021 THE Young University Rankings

STUDENT SUPPORT

WE OFFER A FULL RANGE OF SUPPORT SERVICES TO HELP YOU SUCCEED AT UNIVERSITY.

- » Academic and personal counselling
- » Career advice
- » Social support services
- » Mentoring
- » Disability and inclusion services
- » Health services
- » Online learning and support
- » Student app
- » SafeZone app for security on campus
- » Legal advice
- » Accommodation support
- » International student services
- » Language and learning assistance
- » On-arrival welcome
- » Orientation activities

i.unisa.edu.au/international-student-services



CHAT WITH A UNIBUDDY

Find out what it's like studying at the University of South Australia and living in Adelaide. Chat with a student who speaks your home language or is studying your preferred degree. Our unibuddies are ready to answer your questions.

international.unisa.edu.au/unibuddy

TOP 40 WORLDWIDE FOR HEALTH AND WELLBEING

Ranked #32, 2021 THE University Impact Rankings – Performance based on health research, support of healthcare professions and the health of students and staff



GETTING STARTED

We are here to help you transition into university. We offer the following services to all new students:

- ✓ On arrival transport to your accommodation
- ✓ Advice on living in Adelaide
- ✓ Orientation to university
- ✓ Understanding your working rights in Australia
- ✓ Finding community and government services
- ✓ Accessing academic policies and procedures

NO.1 IN SOUTH AUSTRALIA FOR STUDENT SATISFACTION

ComparED (QILT) Course Experience Questionnaire 2019-20 – Overall Satisfaction Indicator (Undergraduate). Public SA-founded universities only.



STUDENT LIFE

GYM
MEMBERSHIPS
AVAILABLE AT
ALL CAMPUSES

ORIENTATION

Is the start of your journey at university. Explore your campus, meet new people, connect with teaching staff, get study advice and enjoy different activities.

unisa.edu.au/orientation

CAREER SERVICES

We will help you prepare for your future career. Connect with one of our expert career advisers, access the online Career Hub for the latest resources and job listings, and attend networking and industry events.

24-HOUR SECURITY

Our security services are available on campus 24/7 and you can also download the free SafeZone app through the App Store or Google Play.

STUDENT CLUBS

Discover the 100+ academic, cultural and social clubs available at the University of South Australia. From dance and yoga to climate change, gaming and clubs for different nationalities – there is something for everyone! It's a great way to meet new friends, find common interests with fellow students and build a more vibrant university experience.

unisport.edu.au/clubs/search



University of South Australia
Student Association

USASA is your student association and voice at university. They also organise social activities, coordinate student clubs and publish our award-winning student magazine.

unisa.edu.au/USASA

UNISA SPORT

Join one of our 25+ sporting clubs including rowing, netball, gridiron, rock climbing and even esports! You can also sign-up for a range of sports tournaments, keep active in our on-campus gyms, and participate in community events.

unisport.edu.au

unisa.edu.au/studentlife



WORLD CLASS FACILITIES

Study in modern, purpose-built facilities across all UniSA campuses. Learn with the latest industry-standard tools and technologies that will take you from the classroom to the workplace. Here are some of the highlights.



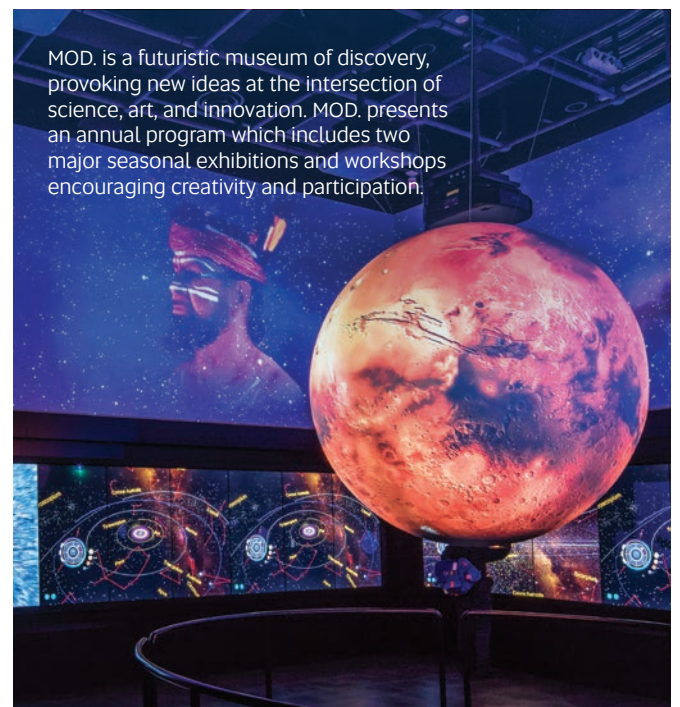
The A\$247 million Bradley Building is located in SA's health and biomedical precinct in the Adelaide CBD, and is focused on cancer research as well as creating new opportunities for research, teaching and community engagement.



The Iress Trading Room is a state-of-the-art learning facility featuring live market data and financial analysis tools at City West Campus.



Pridham Hall is where our students gather to celebrate university life, milestones and achievements. It includes a large multi-purpose hall for graduations and sporting events, as well as a Fitness Centre and 25m heated swimming pool.



MOD. is a futuristic museum of discovery, provoking new ideas at the intersection of science, art, and innovation. MOD. presents an annual program which includes two major seasonal exhibitions and workshops encouraging creativity and participation.

VIRTUAL CAMPUS TOURS

Take one of our virtual campus tours to be guided through our modern, purpose-built teaching and learning facilities, and see for yourself the technologies that will take you from the classroom to the workplace.

unisa.edu.au/visit/virtual-campus-tours/

INDUSTRY CONNECTIONS

Our learning is influenced by industry, and the latest trends and demands. We collaborate with more than 2,500 companies worldwide to bring our students placement, project, research and work opportunities. Connect with industry during your studies and build your professional networks before you graduate.

UniSA+

UniSA+ is a unique program that will help you get career ready by developing your practical skills in leadership, entrepreneurship, cultural understanding and self-awareness.

unisa.edu.au/unisaplus

JOIN OUR ALUMNI NETWORK

When you graduate you will become part of our global alumni network. We have over 200,000 alumni around the world, supported by formal networks in Hong Kong SAR and the People's Republic of China, Singapore, Malaysia, Vietnam, Indonesia and the United Kingdom.

unisa.edu.au/alumni

DEVELOP YOUR PROFESSIONAL SKILLS

As a postgraduate business student, you can join our Executive Partners Program and access valuable mentoring opportunities. Our program will pair you with a highly-experienced industry executive to help you set career goals and gain industry knowledge.



MinterEllison



RISING SUN PICTURES

UniSA BUSINESS / Through a A\$5 million refurbishment project, business students now have access to next generation learning spaces, a unique concierge and support service, corporate-style lounge, walk-up PCs, and an MBA and Executive Education Hub.



TOP 10 IN AUSTRALIA FOR EMPLOYER SATISFACTION

2019 QILT Employer Satisfaction Survey – Overall Satisfaction Indicator

OUR ACADEMIC UNITS

- › **UniSA Allied Health and Human Performance**
- › **UniSA Business**
- › **UniSA Clinical and Health Sciences**
- › **UniSA Creative**
- › **UniSA Education Futures**
- › **UniSA Justice and Society**
- › **UniSA STEM**

UniSA ALLIED HEALTH AND HUMAN PERFORMANCE

Focused on shaping community wellbeing, UniSA Allied Health and Human Performance educates future health professionals and delivers solutions-based research that addresses global health needs.

STUDY AREAS

clinical exercise
physiology

exercise and nutrition

exercise and sport
science

health science (public
health)

human movement

medical radiation
science

occupational therapy

physiotherapy

podiatry

medical sonography

speech pathology

UniSA BUSINESS

Recognised and respected for our quality education, career outcomes and research expertise, UniSA Business creates leaders for change and transforms modern business practice.

STUDY AREAS

accounting

finance

financial planning

human resource
management

innovation and
entrepreneurship

international business

management

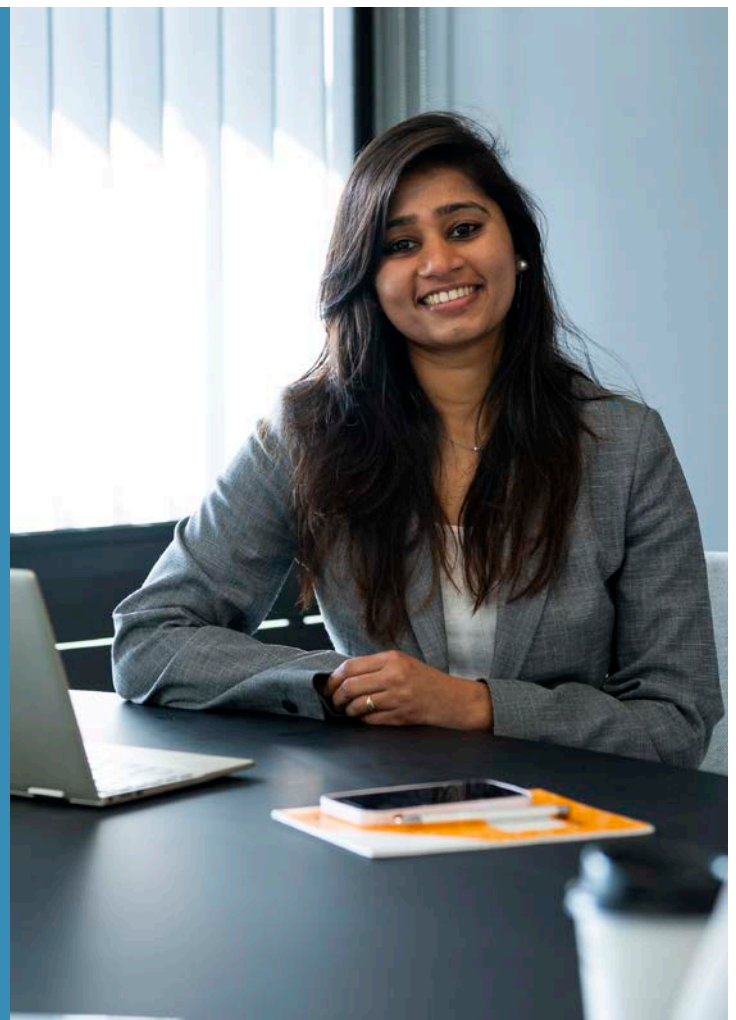
marketing

property

tourism

UniSA BUSINESS IS RANKED IN THE TOP 1% WORLDWIDE

UniSA Business is one of just 11 institutions in Australia and 191 globally to be accredited by EQUIS (from over 16,500 worldwide). EFMD, February 2021. 2020 QS Stars Business School Ratings.





WORLD TOP 50 FOR SPORT SCIENCE

Ranked equal #41, 2020 ARWU Global Ranking for Sport Science



UniSA CLINICAL AND HEALTH SCIENCES

UniSA Clinical and Health Sciences is addressing society's most critical and emerging health needs through quality teaching, learning and research excellence.

STUDY AREAS

health services
management

laboratory medicine

medical science

midwifery

nursing

nutrition and food
sciences

pharmaceutical
science

pharmacy



WORLD TOP 100 FOR NURSING

2021 QS Subject Rankings

UniSA CREATIVE

UniSA Creative explores the creative, cultural and artistic complexities of our world, producing industry-ready professionals and conducting inspired cross-disciplinary research.

STUDY AREAS

architecture

arts

communications

contemporary art

creative industries

design

journalism

urban and regional
planning

TOP 20 IN AUSTRALIA FOR ART AND DESIGN

Ranked equal 11th, 2021 QS Subject Rankings



UniSA EDUCATION FUTURES

Focused on developing education professionals, UniSA Education Futures contributes to innovation in education practice through quality teaching, learning and research excellence.

STUDY AREAS

early childhood
education

literacy and languages

primary education

secondary education

WORLD TOP 150 IN EDUCATION

2021 THE Subject Rankings





UniSA JUSTICE AND SOCIETY

UniSA Justice and Society innovates for change and addresses areas of critical social need through world-class research, teaching and learning.

STUDY AREAS

ageing and disability
human services
law

psychology
social sciences
social work



**WORLD TOP 125
IN LAW**

2021 THE Subject Rankings



UniSA STEM

Building connections across science, technology, engineering and mathematics, UniSA STEM creates innovative solutions and groundbreaking developments across teaching, learning and research.

STUDY AREAS

aviation
construction and
project management
data science
engineering

environmental science
information
technology
mathematics
science



**WORLD TOP 150 IN
COMPUTER SCIENCE**

2021 THE Subject Rankings

DISCOVER ADELAIDE

The University of South Australia is located in Adelaide, Australia's education city. Adelaide is a cultural destination, filled with many different nationalities, foods, festivals and sporting events. It is home to some of the country's best beaches, wine regions and parklands, all in very close proximity to the city centre.

Adelaide has been globally recognised for its education, environment, stability, health care, culture and infrastructure. It is the ideal study location and with free Wi-Fi, free tram and free bus services throughout the city centre, Adelaide is truly a student city.

PUBLIC TRANSPORT

You will find bus stops near each campus and train stations close to the city and Mawson Lakes campuses. Check your bus, train or tram options on the Adelaide Metro website. You will also be eligible for student discounts after enrolment, including purchases of 28-day unlimited passes.

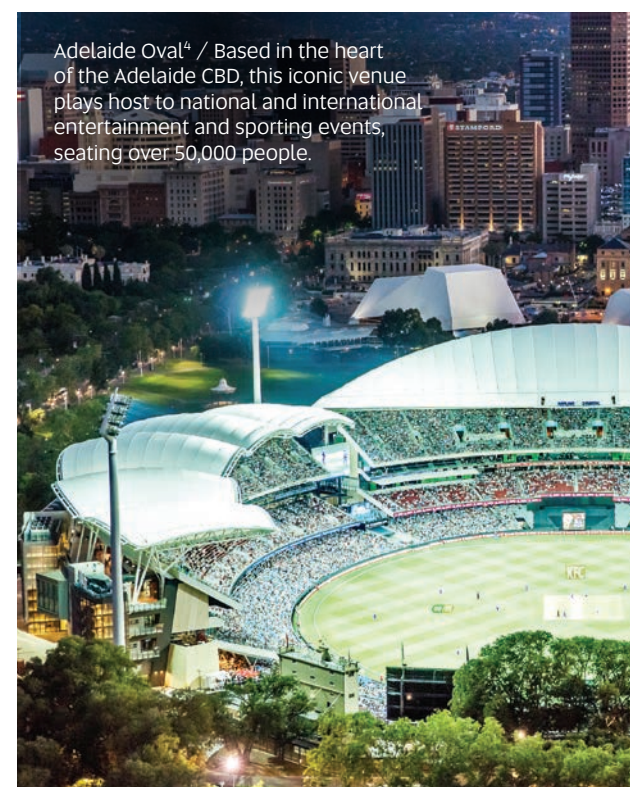
AFFORDABLE

Adelaide has one of the highest standards of living in the world, yet is one of the least expensive. This means more money to spend on food, accommodation, supplies, travel and entertainment.



**ADELAIDE IS RANKED IN
THE TOP 3 MOST LIVEABLE
CITIES IN THE WORLD**

Ranked #3, 2021 Economist Intelligence Unit's
Global Liveability Index



Fringe Festival⁵ / This is the largest open access arts festival in the southern hemisphere, providing 31 magical days of events where Adelaide comes alive with exciting pop-up venues.



South Australia is host to more than **400 SPORTING, FOOD, ARTS AND CULTURAL EVENTS EACH YEAR**



RANKED IN THE WORLD'S TOP 30 BEST STUDENT CITIES

Adelaide Ranked #26, QS Best Student Cities 2019



Glenelg Beach / Located just 12 kilometres away from the city, Glenelg offers classic seaside charm with a white sandy beach known for great swimming, diving, snorkelling and dolphin spotting.

Image credits:
^{1,3}South Australian Tourism Commission;
⁴Hirokazu Ishino; ⁵Brad Griffin.



FAST FACTS

Capital city / Adelaide

Metro population / 1.3 million

Language / English

Currency / A\$

Climate / Mediterranean (hot, dry summers and mild winters)

CLIMATE

Summer
25°C - 35°C

Autumn
20°C - 25°C

Winter
10°C - 15°C

Spring
20°C - 25°C

December - February
Hot & dry

March - May
Mainly dry

June - August
Cool & wet

September - November
Little rain

DIRECT INTERNATIONAL FLIGHTS

Doha / 13 hours 55 minutes

Dubai / 13 hours 25 minutes

Guangzhou / 9 hours 10 minutes

Hong Kong / 8 hours 20 minutes

Kuala Lumpur / 7 hours

Singapore / 6 hours 30 minutes

(Approximate times displayed for direct flights to Adelaide)



ADELAIDE IS UP TO 14% MORE AFFORDABLE THAN OTHER MAJOR AUSTRALIAN CITIES.

EIU Cost of Living Survey 2019



ACCOMMODATION

UNISA STUDENT ACCOMMODATION BY URBANEST

The new UniSA Student Accommodation by Urbanest is located at 12 Bank Street in the Adelaide CBD and offers intelligently designed, modern studios and apartments. The property is conveniently located near our city campuses along with the central railway and tram stations. Weekly rent includes electricity, air conditioning and unlimited internet. Students have access to great weekly events, gym facilities, iMac stations, a secure bike store, outdoor balconies with BBQs and support from a 24/7 onsite team.



**PRICES START
FROM A\$199
PER WEEK**

TEMPORARY ACCOMMODATION

If you have not finalised your long-term accommodation, please ensure that you arrange temporary accommodation before arriving in Adelaide. Plan to arrive two weeks before the start of your program to allow enough time to select accommodation and get settled.

unisa.edu.au/temporary-accommodation

MORE ACCOMMODATION OPTIONS...

Adelaide has a variety of accommodation options to suit your budget and lifestyle. We have a dedicated Accommodation Service with support staff who can help you find the right fit.

STUDENT HOSTELS

A\$140–A\$200 per week

Fully furnished / utilities usually included / inspected by UniSA / book online

STUDENT APARTMENTS

A\$150–A\$460 per week

Fully furnished / inspected by UniSA / very popular / book online

HOMESTAY

A\$250–A\$310 per week

Fully furnished / meals included / live with family / utilities usually included / very popular / book online

PRIVATE RENTAL

A\$120–A\$350 per week

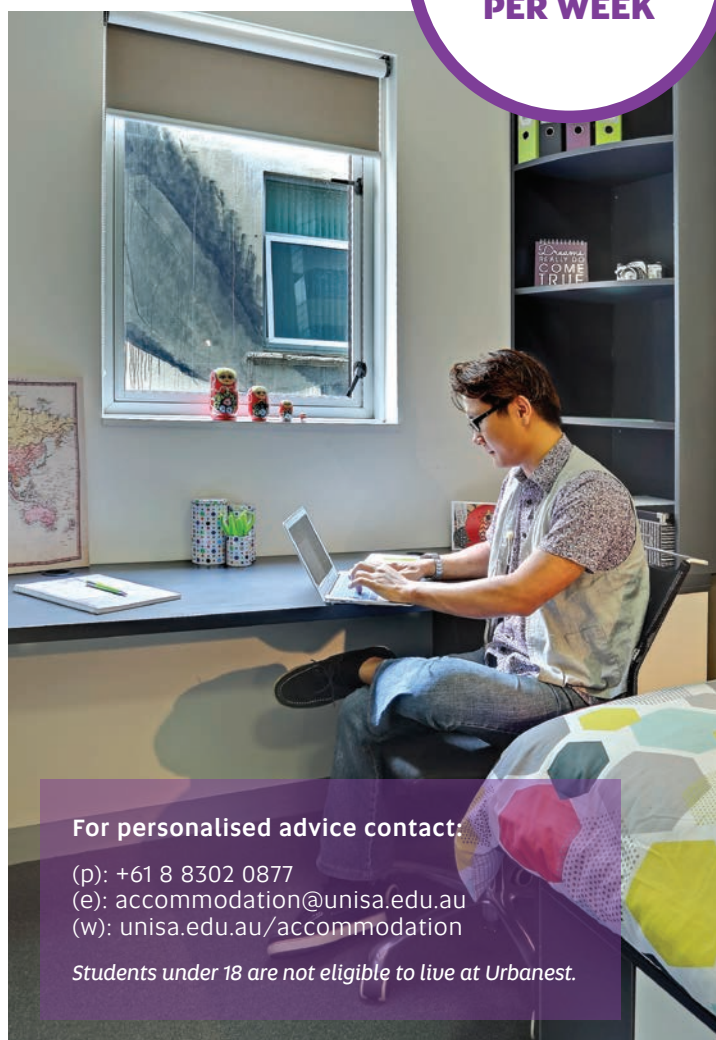
High independent living / must inspect in person / utilities not included

Access the UniSA Rental Database at unisa.studystays.com.au

Under the age of 18?

Please note that students under 18 years of age are eligible only for homestay or homeaway (organised by SAIBT or Eynesbury) accommodation options.

For more information visit unisa.edu.au/accommodation



For personalised advice contact:

(p): +61 8 8302 0877

(e): accommodation@unisa.edu.au

(w): unisa.edu.au/accommodation

Students under 18 are not eligible to live at Urbanest.



PATHWAY OPTIONS

There are many alternative pathways to help you gain entry into the University of South Australia.

To learn more, visit international.unisa.edu.au/international-pathways

ON CAMPUS



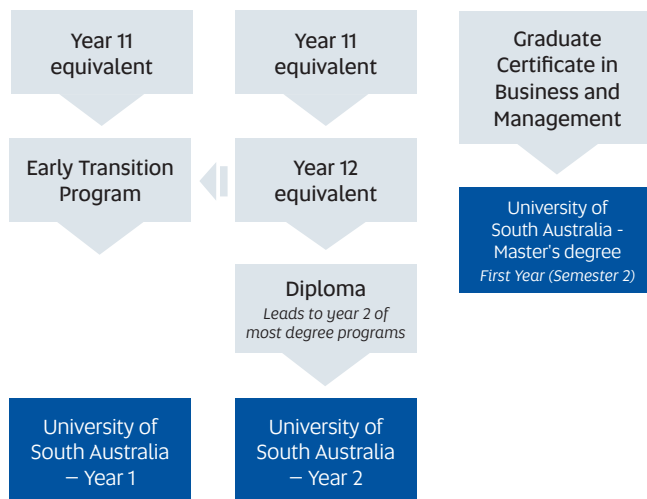
University of
South Australia

THE SOUTH AUSTRALIAN INSTITUTE OF BUSINESS AND TECHNOLOGY (SAIBT)

Located centrally in the Adelaide CBD, and proudly sharing UniSA's campus and facilities, SAIBT helps you seamlessly transition into your degree studies. The SAIBT programs are an ideal alternative if you are ineligible for direct entry into your preferred degree. Successful completion of your SAIBT program will provide direct entry into either first or second year (with credit granted) of your chosen program. SAIBT also offers the Graduate Certificate in Business and Management which offers entry into a range of master degrees at UniSA.

saibt.sa.edu.au

CRICOS provider code: SAIBT 02193C



Centre for
English Language

CENTRE FOR ENGLISH LANGUAGE (CELUSA)

CELUSA delivers high quality Academic English programs designed to prepare students from non-English speaking backgrounds for university study. CELUSA is suited for applicants who do not meet the University's English language entry requirements and offers Academic English (AE) language preparation programs. Students who are eligible for and successfully complete an AE program (at an appropriate level) will be able to commence their studies at the University of South Australia or a pathway program through SAIBT. CELUSA is also an IELTS and OET test centre.

international.unisa.edu.au/celusa

CRICOS provider code: CELUSA 02193C

CELUSA 2022 COURSE DATES

Course	Start Date	End Date
CC2201	10/01/2022	11/02/2022
CC2202	14/02/2022	18/03/2022
CC2203	21/03/2022	22/04/2022
Holidays (1 week)		
CC2204	02/05/2022	03/06/2022
CC2205	06/06/2022	08/07/2022
Holidays (2 weeks)		
CC2206	25/07/2022	26/08/2022
CC2207	29/08/2022	30/09/2022
Holidays (1 week)		
CC2208	10/10/2022	11/11/2022
CC2209	14/11/2022	16/12/2022

OFF CAMPUS



EYNESBURY COLLEGE

Eynesbury College offers a range of programs that can lead into the first or second year of an undergraduate degree at the University of South Australia. Eynesbury College offers excellent teaching quality and support for students.

eynesbury.navitas.com

CRICOS provider code: 00561M



TAFE SA

Successful completion of a TAFE SA Diploma, Advanced Diploma or Associate Degree offers guaranteed entry into a range of undergraduate degrees, at the University of South Australia, either into year 1, 2 or 3. TAFE SA English for Academic Purposes 20 (064266M) and English for Academic Purposes Advanced (086001K) can also provide direct entry into some degrees.

tafesa.edu.au/international

CRICOS provider code: 00092B | RTO code: 41026 | HEP code: PRV14002

HOW TO APPLY

1 FIND YOUR DEGREE

Explore your study options in this guide or go online for more information.

unisa.edu.au/study

2 CHECK ADMISSION REQUIREMENTS

Make sure that you are aware of entry requirements including English language, academic entry, and guidelines on genuine temporary entry, living costs and evidence of funds.

international.unisa.edu.au/how-to-apply

3 APPLY

Once you have found the program you wish to study, you can apply online either directly or via an Education Agent. Apply at least two months before you intend to start studying. Some students may require more time to ensure they receive their visa.

Apply directly – You can apply directly via our secure online service. Save your application and return later to continue the process and track your progress.

Education Agents – Depending on your country of citizenship, you may be required to apply through one of our registered Education Agents. A full list is available online at international.unisa.edu.au/find-an-agent

Study Credit – If you have completed previous studies at university, in a diploma program or an equivalent post-secondary qualification, you may be eligible to receive study credit, exemptions or advanced standing towards your degree. You may also be considered for credit if you have work experience in an area relevant to your studies. To check your eligibility, visit creditasessor.unisa.edu.au

international.unisa.edu.au/how-to-apply

4 APPLICATION ASSESSMENT

Application outcomes will be advised within one to two weeks from the date received (including all supporting documentation required). If you are eligible for your chosen program, an offer letter package will be sent to you, or your Education Agent, via email. If you are not eligible, we may suggest alternative programs or pathway studies. Your application will be assessed in accordance with the University's Selection and Entry to Programs Policy, which includes the guidelines on genuine temporary entry and guidelines on living costs and evidence of funds.

international.unisa.edu.au/how-to-apply

5 ACCEPT YOUR OFFER

To accept a place in your offered program, you will need to:

- Check the offer letter package
- If all details are correct, log in to our secure online service and complete the steps to accept your offer. This includes uploading any additional documents required, accepting the terms and conditions of your offer and finalising your payment.

If you have an Education Agent, they can help you accept your offer via student-unisa.studylink.com

6 PREPARE FOR ARRIVAL

✓ **Enrol online**

✓ **Book your travel**
(to keep up to date with the latest border information please visit the Australian Federal Government website: covid19.homeaffairs.gov.au/)

✓ **Arrive on time**

✓ **Get ready for orientation**

unisa.edu.au/international/pre-departure-checklist

STUDENT VISAS

We will send you a Confirmation of Enrolment (CoE) document, which you can use to apply for a student visa for entry into Australia. Apply for your student visa as soon as you receive your CoE.

international.unisa.edu.au/student-visa

STUDENT PAYMENTS

The Western Union GlobalPay for Students service helps you make payments in your preferred currency without extra fees and delays.

- Pay your tuition fees quickly.
- Make payments online, by bank transfer or via credit card.
- Track payments and receive status updates by text and email.

international.unisa.edu.au/westernunion



Any questions? Contact us at unisa.edu.au/enquire or phone +61 8 8302 0114

Undergraduate degrees offered in 2022

							IELTS English language requirements					Admission requirements by country/region						
Program	Program Code	CRICOS Code	Program Length (years)	2022 Indicative Annual Tuition Fee (A\$)	Start Date(s)	Campus	IELTS Total	IELTS Reading	IELTS Writing	IELTS Listening	IELTS Speaking	Bangladesh HSC	IB (best 6)	India (best 4)	Nepal NEB	Pakistan HSSC	Sri Lanka A Levels (best 3)	UK Board GCE A Levels
UniSA ALLIED HEALTH AND HUMAN PERFORMANCE																		
Bachelor of Clinical Exercise Physiology (Honours)	IHCP	095008F	4	37,800	Feb	CE	6.5	6.5	6.5	6.5	6.5	5	37	88	3.61	95	13	13
Bachelor of Exercise and Sport Science	IBXS	094935G	3	30,300	Feb	CE	6.5	6.5	6.5	6.5	6.5	5	33	80	3.21	90	12	12
Bachelor of Health Science (Public Health)	IBHP	0100073	3	31,000	Feb	CE	6.5	6.5	6.5	6.5	6.5	4	26	65	2.61	85	7	7
Bachelor of Human Movement	IBHT	027744D	3	30,300	Feb	CE	6.5	6.5	6.5	6.5	6.5	4	27	65	2.71	85	7	7
Bachelor of Medical Radiation Science (Medical Imaging) Q	IBRS	088578G	4	37,800	Feb	CE	7.0	7.0	7.0	7.0	7.0	5	35	85	3.41	90	12	12
Bachelor of Medical Radiation Science (Nuclear Medicine) Q	IBRS	088333G	4	37,800	Feb	CE	7.0	7.0	7.0	7.0	7.0	5	35	85	3.41	90	12	12
Bachelor of Medical Radiation Science (Radiation Therapy) Q	IBRS	088335E	4	37,800	Feb	CE	7.0	7.0	7.0	7.0	7.0	5	35	85	3.41	90	12	12
Bachelor of Occupational Therapy (Honours) Q	IHOC	088336D	4	37,800	Feb	CE	7.0	7.0	7.0	7.0	7.0	5	33	80	3.21	90	12	12
Bachelor of Outdoor and Environmental Leadership	IBOE	0101602	3	33,600	Feb	CE	6.0	6.0	6.0			4	26	65	2.61	85	7	7
Bachelor of Physiotherapy (Honours) Q	IHPZ	088338B	4	37,800	Feb	CE	7.0	7.0	7.0	7.0	7.0	5	35	85	3.41	90	12	12
Bachelor of Podiatry Q	IBOP	008312G	4	37,800	Feb	CE	7.0	7.0	7.0	7.0	7.0	4.5	30	75	3.01	85	10	10
Bachelor of Speech Pathology (Honours) Q	IHSP	0101865	4	37,800	Feb	CE	7.0	7.0	7.0	7.0	7.0	5	33	80	3.21	90	12	12
UniSA BUSINESS																		
Bachelor of Business*	DBBN	082882D	3	32,600	Feb, Aug	CW	6.0	6.0	6.0			3.5	26	63	2.51	80	7	7
Bachelor of Business (Design and Marketing)	DBMD	097501K	3	32,600	Feb, Jul	CW	6.0	6.0	6.0			3.5	26	63	2.51	80	7	7
Bachelor of Business (Economics, Finance and Trade)*	DBIB	027743E	3	32,600	Feb, Aug	CW	6.0	6.0	6.0			3.5	26	63	2.51	80	7	7
Bachelor of Business (Finance)*	DBCF	080918B	3	32,600	Feb, Aug	CW	6.0	6.0	6.0			3.5	26	63	2.51	80	7	7
Bachelor of Business (Financial Planning)*	DBRF	097499K	3	32,600	Feb, Aug	CW	6.0	6.0	6.0			3.5	26	63	2.51	80	7	7
Bachelor of Business (Human Resource Management)	DBBH	080603K	3	32,600	Feb, Aug	CW	6.0	6.0	6.0			3.5	26	63	2.51	80	7	7
Bachelor of Business (Information Strategy and Management)	DBBN	086245A	3	32,600	Feb, Aug	CW	6.0	6.0	6.0			3.5	26	63	2.51	80	7	7
Bachelor of Business (Innovation and Entrepreneurship)*	DBBN	082892B	3	32,600	Feb, Aug	CW	6.0	6.0	6.0			3.5	26	63	2.51	80	7	7
Bachelor of Business (International Business)	DBBN	088328D	3	32,600	Feb, Aug	CW	6.0	6.0	6.0			3.5	26	63	2.51	80	7	7
Bachelor of Business (Logistics and Supply Chain Management)*	DBBL	080915E	3	32,600	Feb, Aug	CW	6.0	6.0	6.0			3.5	26	63	2.51	80	7	7
Bachelor of Business (Management)	DBBG	080993B	3	32,600	Feb, Aug	CW	6.0	6.0	6.0			3.5	26	63	2.51	80	7	7
Bachelor of Business (Marketing)*	DBBM	080916D	3	32,600	Feb, Aug	CW	6.0	6.0	6.0			3.5	26	63	2.51	80	7	7
Bachelor of Business (Property)*	DBPY	024196G	3	32,600	Feb, Aug	CW	6.0	6.0	6.0			3.5	26	63	2.51	80	7	7
Bachelor of Business (Real Estate Practice)	DBRF	097500M	3	32,600	Feb, Aug	CW	6.0	6.0	6.0			3.5	26	63	2.51	80	7	7
Bachelor of Business (Sport and Recreation Management)	DBBS	081326G	3	32,600	Feb, Aug	CW	6.0	6.0	6.0			3.5	26	63	2.51	80	7	7
Bachelor of Business (Tourism and Event Management)*	DBBT	081139K	3	32,600	Feb, Aug	CW	6.0	6.0	6.0			3.5	26	63	2.51	80	7	7
Bachelor of Commerce (Accounting)*	DBCA	080917C	3	32,600	Feb, Aug	CW	6.0	6.0	6.0			3.5	26	63	2.51	80	7	7
Bachelor of Marketing and Communication	DBMN	060210D	3	32,600	Feb, Jul	CW	6.0	6.0	6.0			3.5	26	63	2.51	80	7	7



Undergraduate degrees offered in 2022

							IELTS English language requirements					Admission requirements by country/region						
Program	Program Code	CRICOS Code	Program Length (years)	2022 Indicative Annual Tuition Fee (A\$)	Start Date(s)	Campus	IELTS Total	IELTS Reading	IELTS Writing	IELTS Listening	IELTS Speaking	Bangladesh HSC	IB (best 6)	India (best 4)	Nepal NEB	Pakistan HSSC	Sri Lanka A Levels (best 3)	UK Board E A Levels
UniSA CLINICAL AND HEALTH SCIENCES																		
Bachelor of Biomedical Science	IBBM	105413F	3	36,900	Feb	CE	6.5	6.0	6.0	6.0	6.0	4	26	65	2.61	85	7	7
Bachelor of Laboratory Medicine (Honours)	IHLB	088329C	4	35,900	Feb	CE	6.5	6.5	6.5	6.5	6.5	4	26	65	2.61	85	7	7
Bachelor of Midwifery Q	IBMW	036241G	3	32,600	Feb	CE	7.0	7.0	7.0	7.0	7.0	5	35	85	3.41	90	12	12
Bachelor of Nursing Q	IBNU	024218F	3	32,600	Feb	CE	7.0	7.0	7.0	7.0	7.0	4	26	65	2.61	85	7	7
Bachelor of Nutrition and Food Sciences	IBNF	036238C	3	34,800	Feb	CE	6.5	6.5	6.5	6.5	6.5	4	26	65	2.61	85	7	7
Bachelor of Pharmaceutical Science	IBPA	060209G	3	34,800	Feb	CE	6.5	6.5	6.5	6.5	6.5	4	26	65	2.61	85	7	7
Bachelor of Pharmacy (Honours)	IHPC	088337C	4	39,400	Feb	CE	6.5	6.5	6.5	6.5	6.5	4	29	70	2.81	85	9	9
UniSA CREATIVE																		
Bachelor of Architectural Studies	DBAE	060207K	3	33,600	Feb, Jul	CW	6.0	6.0	6.0			4	26	65	2.61	85	7	7
Bachelor of Communication and Media*	MBCD	081881B	3	28,000	Feb, Jul	CW, M	6.0	6.0	6.0			3.5	26	60	2.41	75	6	6
Bachelor of Contemporary Art	DBCX	095004K	3	28,000	Feb, Jul	CW	6.0	6.0	6.0			3.5	26	60	2.41	75	6	6
Bachelor of Creative Industries	DBCI	0100163	3	28,000	Feb, Jul	CW	6.0	6.0	6.0			3.5	26	60	2.41	75	6	6
Bachelor of Design (Communication Design)	DBVC	023813F	3	28,000	Feb	CW	6.0	6.0	6.0			3.5	26	60	2.41	75	6	6
Bachelor of Design (Illustration and Animation)	DBIA	095761F	3	28,000	Feb, Jul	CW	6.0	6.0	6.0			3.5	26	60	2.41	75	6	6
Bachelor of Design (Product Design)	DBPR	071953G	3	30,300	Feb	CW	6.0	6.0	6.0			3.5	26	60	2.41	75	6	6
Bachelor of Film and Television	MBME	058520G	3	28,000	Feb, Jul	M	6.0	6.0	6.0			3.5	26	60	2.41	75	6	6
Bachelor of Interior Architecture	DBIR	024202C	4	30,300	Feb, Jul	CW	6.0	6.0	6.0			3.5	26	63	2.51	80	7	7
Bachelor of Journalism and Professional Writing	MBJR	082449K	3	29,300	Feb, Jul	M	6.0	6.0	6.0			3.5	26	60	2.41	75	6	6
UniSA EDUCATION FUTURES																		
Bachelor of Early Childhood Education (Honours)	LHEC	098150J	4	28,000	Feb	ML	7.0	7.0	7.0	7.0	7.0	4	26	65	2.61	85	7	7
Bachelor of Early Childhood Education (Honours)	MHEC	098150J	4	28,000	Feb	M	7.0	7.0	7.0	7.0	7.0	4	26	65	2.61	85	7	7
Bachelor of Primary Education (Honours)	LHPE	098151G	4	28,000	Feb	ML	7.0	7.0	7.0	7.0	7.0	4	26	65	2.61	85	7	7
Bachelor of Primary Education (Honours)	MHPE	098151G	4	28,000	Feb	M	7.0	7.0	7.0	7.0	7.0	4	26	65	2.61	85	7	7
Diploma in Languages (English Language)	MDLA	098490M	1	28,000	Feb	M	6.0	6.0	6.0			4	26	65	2.61	85	7	7



Undergraduate degrees offered in 2022

							IELTS English language requirements					Admission requirements by country/region						
Program	Program Code	CRICOS Code	Program Length (years)	2022 Indicative Annual Tuition Fee (A\$)	Start Date(s)	Campus	IELTS Total	IELTS Reading	IELTS Writing	IELTS Listening	IELTS Speaking	Bangladesh HSC	IB (best 6)	India (best 4)	Nepal NEB	Pakistan HSSC	Sri Lanka A Levels (best 3)	UK Board GCE A Levels
UniSA JUSTICE AND SOCIETY																		
Bachelor of Arts	MBAA	024180D	3	28,000	Feb, Jul	M	6.0	6.0	6.0			3.5	26	60	241	75	6	6
Bachelor of Arts (Aboriginal Cultures and Australian Society)	MBAP	074671D	3	28,000	Feb, Jul	M	6.0	6.0	6.0			3.5	26	60	241	75	6	6
Bachelor of Arts (Applied Linguistics)	MBAA	097509B	3	28,000	Feb, Jul	M	6.0	6.0	6.0			3.5	26	60	241	75	6	6
Bachelor of Arts (Creative Writing and Literature)	MBAA	097508C	3	28,000	Feb, Jul	M	6.0	6.0	6.0			3.5	26	60	241	75	6	6
Bachelor of Arts (Cultural Studies)	MBAA	097502J	3	28,000	Feb, Jul	M	6.0	6.0	6.0			3.5	26	60	241	75	6	6
Bachelor of Arts (English Language)	MBAA	097507D	3	28,000	Feb, Jul	M	6.0	6.0	6.0			3.5	26	60	241	75	6	6
Bachelor of Arts (History and Global Politics)	MBAA	097504G	3	28,000	Feb, Jul	M	6.0	6.0	6.0			3.5	26	60	241	75	6	6
Bachelor of Arts (Honours)	MHAR	024183A	1	28,000	Feb, Jul	M	6.0	6.0	6.0									
Bachelor of Arts (Languages)	MBAA	081802F	3	28,000	Feb	M	6.0	6.0	6.0			3.5	26	60	241	75	6	6
Bachelor of Arts (Law, Policy and Politics)	MBAA	098294D	3	28,000	Feb, Jul	M	6.0	6.0	6.0			3.5	26	60	241	75	6	6
Bachelor of Arts (Performing Arts)	MBAA	081804D	3	28,000	Feb, Jul	M	6.0	6.0	6.0			3.5	26	60	241	75	6	6
Bachelor of Arts (Psychology)	MBAA	097506E	3	28,000	Feb, Jul	M	6.0	6.0	6.0			3.5	26	60	241	75	6	6
Bachelor of Arts (Screen Studies)	MBAA	097505F	3	28,000	Feb, Jul	M	6.0	6.0	6.0			3.5	26	60	241	75	6	6
Bachelor of Arts (Social Media)	MBAA	097503G	3	28,000	Feb, Jul	M	6.0	6.0	6.0			3.5	26	60	241	75	6	6
Bachelor of Arts (Sociology)	MBAA	081805C	3	28,000	Feb, Jul	M	6.0	6.0	6.0			3.5	26	60	241	75	6	6
Bachelor of Business (Legal Studies)	DBLS	082890D	3	32,600	Feb, Aug	CW	6.0	6.0	6.0			3.5	26	60	241	75	6	6
Bachelor of Laws (Honours)	DHLA	089090B	4	32,600	Feb, Aug	CW	7.0	7.0	7.0	7.0	7.0	5	33	80	3.21	90	12	12
Bachelor of Laws (Honours) (Graduate Entry) *	DHLA	102763H	4	32,600	Feb, Aug	CW	7.0	7.0	7.0	7.0	7.0							
Bachelor of Psychology	MBPU	036236E	3	29,300	Feb, Jul	M	6.0	6.0	6.0			3.5	26	63	2.51	80	7	7
Bachelor of Psychology (Cognitive Neuroscience)	MBPU	079096A	3	29,300	Feb	M	6.0	6.0	6.0			4	26	65	2.61	85	7	7
Bachelor of Psychology (Counselling and Interpersonal Skills)	MBPU	081882A	3	29,300	Feb, Jul	M	6.0	6.0	6.0			3.5	26	63	2.51	80	7	7
Bachelor of Psychology (Honours)	MHPU	036237D	4	29,300	Feb	M	6.0	6.0	6.0			4.5	30	75	3.01	85	10	10
Bachelor of Psychology (Honours) (Cognitive Neuroscience)	MHPU	091255A	4	29,300	Feb	M	6.0	6.0	6.0			4	29	70	2.81	85	9	9
Bachelor of Social Science (Ageing and Disability)	MBSS	098030F	3	28,000	Feb	M	6.0	6.0	6.0			4	26	65	2.61	85	7	7
Bachelor of Social Science (Human Services)	MBSS	002497J	3	28,000	Feb	M	6.0	6.0	6.0			3.5	26	63	2.51	80	7	7
Bachelor of Social Work	MBSW	000537M	4	28,000	Feb	M	7.0	7.0	7.0	7.0	7.0	3.5	26	63	2.51	80	7	7
Bachelor of Social Work (Honours)	MHSW	081883M	4	28,000	Feb	M	7.0	7.0	7.0	7.0	7.0	4	29	70	2.81	85	9	9



Undergraduate degrees offered in 2022

							IELTS English language requirements					Admission requirements by country/region						
Program	Program Code	CRICOS Code	Program Length (years)	2022 Indicative Annual Tuition Fee (A\$)	Start Dates	Campus	IELTS Total	IELTS Reading	IELTS Writing	IELTS Listening	IELTS Speaking	Bangladesh HSC	IB (best 6)	India (best 4)	Nepal NEB	Pakistan HSSC	Sri Lanka A Levels (best 3)	UK Board GCE A Levels
UniSA STEM																		
Bachelor of Aviation (Flight)	LBAF	095900M	3	37,800	Feb, Jul	ML	6.0	6.0	6.0			4	26	65	2.61	85	7	7
Bachelor of Aviation (Management)	LBAN	088879F	3	35,900	Feb, Jul	ML	6.0	6.0	6.0			3.5	26	63	2.51	80	7	7
Bachelor of Construction Management	IBBE	099378C	3	33,600	Feb, Jul	CE	6.0	6.0	6.0			3.5	26	63	3.51	80	7	7
Bachelor of Construction Management (Honours)*	IHCN	099379B	4	33,600	Feb, Jul	CE	6.0	6.0	6.0			4	29	70	2.81	85	9	9
Bachelor of Engineering (Honours) (Civil and Construction Management)*	LHMI	099377D	4	35,900	Feb, Jul	ML	6.0	6.0	6.0			4	26	65	2.61	85	7	7
Bachelor of Engineering (Honours) (Civil and Structural)*	LHMI	081807A	4	35,900	Feb, Jul	ML	6.0	6.0	6.0			4	26	65	2.61	85	7	7
Bachelor of Engineering (Honours) (Civil)*	LHMI	081808M	4	35,900	Feb, Jul	ML	6.0	6.0	6.0			4	26	65	2.61	85	7	7
Bachelor of Engineering (Honours) (Electrical and Electronic)*	LHIF	081810F	4	35,900	Feb, Jul	ML	6.0	6.0	6.0			4	26	65	2.61	85	7	7
Bachelor of Engineering (Honours) (Electrical and Mechatronic)*	LHIF	081811E	4	35,900	Feb, Jul	ML	6.0	6.0	6.0			4	26	65	2.61	85	7	7
Bachelor of Engineering (Honours) (Mechanical and Advanced Manufacturing)*	LHMR	081814B	4	35,900	Feb, Jul	ML	6.0	6.0	6.0			4	26	65	2.61	85	7	7
Bachelor of Engineering (Honours) (Mechanical and Mechatronic)*	LHMR	081815A	4	35,900	Feb, Jul	ML	6.0	6.0	6.0			4	26	65	2.61	85	7	7
Bachelor of Engineering (Honours) (Mechanical)*	LHMR	081816M	4	35,900	Feb, Jul	ML	6.0	6.0	6.0			4	26	65	2.61	85	7	7
Bachelor of Engineering (Honours) (Surveying)	LHES	0100168	4	34,400	Feb, Jul	ML	6.0	6.0	6.0			4	26	65	2.61	85	7	7
Bachelor of Environmental Science	LBVT	070414J	3	33,600	Feb, Jul	ML	6.0	6.0	6.0			3.5	26	60	2.41	75	6	6
Bachelor of Information Technology	LBCP	024199D	3	33,600	Feb, Jul	ML	6.0	6.0	6.0			3.5	26	63	2.51	80	7	7
Bachelor of Information Technology (Games and Entertainment Design)	LBCP	067898K	3	33,600	Feb, Jul	ML	6.0	6.0	6.0			3.5	26	63	2.51	80	7	7
Bachelor of Information Technology (Honours)	LHCP	024200E	1	33,600	Feb, Jul	ML	6.0	6.0	6.0									
Bachelor of Information Technology (Mobile Application Development)	LBCP	083331E	3	33,600	Feb, Jul	ML	6.0	6.0	6.0			3.5	26	63	2.51	80	7	7
Bachelor of Information Technology (Networking and Cybersecurity)	LBCP	067899J	3	33,600	Feb, Jul	ML	6.0	6.0	6.0			3.5	26	63	2.51	80	7	7
Bachelor of Information Technology (Software Development)	LBCP	067897M	3	33,600	Feb, Jul	ML	6.0	6.0	6.0			3.5	26	63	2.51	80	7	7
Bachelor of Mathematics (Data Science)	LBMH	095006G	3	33,600	Feb, Jul	ML	6.0	6.0	6.0			4	27	65	2.71	85	7	7
Bachelor of Mathematics (Industrial and Applied Mathematics)	LBMH	095007G	3	33,600	Feb, Jul	ML	6.0	6.0	6.0			4	27	65	2.71	85	7	7
Bachelor of Science	LBSC	024220A	3	33,600	Feb, Jul	ML	6.0	6.0	6.0			3.5	26	60	2.41	75	6	6
Bachelor of Science (Honours)	LHSC	098256K	1	33,600	Feb, Jul	ML	6.5	6.0	6.0									
Bachelor of Software Engineering (Honours)	LHSG	081819G	4	33,600	Feb, Jul	ML	6.0	6.0	6.0			4	26	65	2.61	85	7	7

Key

Campus codes

CE City East
CW City West
ML Mawson Lakes
M Magill
MG Mount Gambier

Symbol codes

Q Quota applies

~ Please note this degree is based at the City West campus however some courses will be offered at the Magill campus.

Please note this degree is based at the Mawson Lakes campus however some courses will be offered at the City West campus.

+ Applicants with a completed bachelor's degree can receive one year of credit and complete this program in three years full-time.

If you are planning to commence your studies as an offshore student, please visit our website for a full list of available degrees. Not all degrees listed here are available to offshore students. For more information please visit:

international.unisa.edu.au/start-online-transfer-later

Important Information

The University of South Australia reserves the right to alter, amend or delete any program, fee, course, admission requirement, or mode of delivery without prior notice.

Some programs may have additional entry requirements. For further details and to view the most up to date program information, visit: unisa.edu.au/study

Please note the University calculates a Grade Point Average (GPA) on a scale from 1–7.

For more information, go to: unisa.edu.au/gpa

Fees

Tuition fees are based on 2021 fees and are accurate at the time of publication. Fees are subject to change and once you have started your program, your tuition fees will increase each calendar year. However, your fees will not be more than the fees for commencing (new) students. Your tuition fees will be based on your enrolment and the fees set for that year. You will be liable for these fees upon acceptance of an offer from the University.

In the event of a variation between the fees listed here and the approved schedule of tuition fees found at unisa.edu.au/study, the approved university schedule will prevail. All fees are listed in Australian dollars (A\$).

You may incur incidental fees in addition to your tuition fees during your studies. A list of the estimated non-tuition fees you may incur during your program can be found at <https://international.unisa.edu.au/how-to-apply/forms-and-fees/non-tuition-fees/>

Pathway to Masters

For select degrees (marked with a * in this chart), you can fast-track your studies with our Pathway to Masters package. For more information, visit: unisa.edu.au/pathway-to-masters

How to apply

For more information, visit: international.unisa.edu.au/how-to-apply

2022 Academic Calendar

SP = Study Period

Semester 1

SP1 10 Jan 2022 – 25 Mar 2022
SP2 21 Feb 2022 – 2 Jul 2022

SP3 4 Apr 2022 – 17 Jun 2022

UniSA Business Only

SP2 21 Feb 2022 – 11 Jun 2022

Semester 2

SP4 27 Jun 2022 – 9 Sept 2022
SP5 18 Jul 2022 – 26 Nov 2022
SP6 19 Sept 2022 – 2 Dec 2022

UniSA Business Only

SP4 13 Jun 2022 – 6 Aug 2022
SP5 1 Aug 2022 – 19 Nov 2022

Summer Term

SP7 31 Oct 2022 – 4 Feb 2023

Please note that some programs may have a different start date. Please check your offer letter for details.

Actual teaching dates may vary in some programs. It is important that students consult their timetable for exact teaching dates. Commencement of study begins with Orientation. Please ensure your travel plans enable you to arrive in time for this.

The information provided in this publication is for general information only, and the University of South Australia makes no representation about the content, suitability, accuracy or completeness of this information for any purpose. It is provided "as is" without express or implied warranty.

Information correct at time of printing (September 2021). CRICOS provider number 00121B

Postgraduate degrees offered in 2022

							IELTS English language requirements				
Program	Program Code	CRICOS Code	Program Length (years)	2022 Indicative Annual Tuition Fee (A\$)	Start Date(s)	Campus	IELTS Total	IELTS Reading	IELTS Writing	IELTS Listening	IELTS Speaking
UniSA ALLIED HEALTH AND HUMAN PERFORMANCE											
Graduate Certificate in Advanced Clinical Musculoskeletal and Sports Physiotherapy	ICMS	0100852	0.5	37,500	Feb	CE	70	70	70	70	70
Graduate Certificate in Breast Imaging	ICBR	NOTREQ^	0.5	29,300	Feb, Jul	CE	70	70	70	70	70
Graduate Certificate in Health Research	ICHR	NOTREQ^	0.5	35,900	Feb, Jul	CE	70	70	70	70	70
Graduate Diploma in Medical Sonography (Cardiac)	IGSO	NOTREQ^	1	30,300	Feb, Jul	CE	70	70	70	70	70
Graduate Diploma in Medical Sonography (General)	IGSO	NOTREQ^	1	30,300	Feb, Jul	CE	70	70	70	70	70
Graduate Diploma in Medical Sonography (Vascular)	IGSO	NOTREQ^	1	30,300	Feb, Jul	CE	70	70	70	70	70
Master of Advanced Clinical Physiotherapy (Musculoskeletal)	IMAP	088576K	1	39,400	Feb	CE	70	70	70	70	70
Master of Advanced Clinical Physiotherapy (Sports)	IMAP	088577J	1	39,400	Feb	CE	70	70	70	70	70
Master of Medical Sonography (Cardiac)	IMSO	NOTREQ^	1.5	30,300	Feb, Jul	CE	70	70	70	70	70
Master of Medical Sonography (General)	IMSO	NOTREQ^	1.5	30,300	Feb, Jul	CE	70	70	70	70	70
Master of Medical Sonography (Vascular)	IMSO	NOTREQ^	1.5	30,300	Feb, Jul	CE	70	70	70	70	70
Master of Occupational Therapy (Graduate Entry) Q	IMOG	024071J	2	40,300	Feb	CE	70	70	70	70	70
Master of Physiotherapy (Graduate Entry) Q	IMPE	045406F	2	43,600	Feb	CE	70	70	70	70	70
UniSA BUSINESS											
Graduate Certificate in Business	DCBZ	081140F	0.5	35,900	Feb, Aug	CW	6.5	6.0	6.0		
Graduate Certificate in Business Administration	DCMA	024119J	0.5	36,000	Jan, Apr, Jun, Sep	CW	6.5	6.0	6.0		
Graduate Certificate in Management	DCGT	098291G	0.5	35,900	Feb, Aug	CW	6.5	6.0	6.0		
Graduate Diploma in Business Administration	DCMA	024133M	1	36,000	Jan, Apr, Jun, Sep	CW	6.5	6.0	6.0		
International Master of Business Administration	DMIN	081137A	2	35,900	Feb, Aug	CW	6.5	6.0	6.0		
International Master of Business Administration (Advertising and Brand Management)	DMIN	097175G	2	35,900	Feb, Aug	CW	6.5	6.0	6.0		
International Master of Business Administration (Business Analytics)	DMIN	0101921	2	35,900	Aug	CW	6.5	6.0	6.0		
International Master of Business Administration (Finance)	DMIN	092314J	2	35,900	Feb, Aug	CW	6.5	6.0	6.0		
International Master of Business Administration (Human Resource Management)	DMIN	091996G	2	35,900	Feb, Aug	CW	6.5	6.0	6.0		
International Master of Business Administration (Marketing)	DMIN	091997G	2	35,900	Feb, Aug	CW	6.5	6.0	6.0		
International Master of Business Administration (Tourism and Event Management)	DMIN	091994K	2	35,900	Feb, Aug	CW	6.5	6.0	6.0		
Master of Business Administration	DMMA	048635B	1.5	36,000	Jan, Apr, Jun, Sep	CW	6.5	6.0	6.0		
Master of Business Administration (Finance)	DMMA	083050C	1.5	36,000	Jan, Apr, Jun, Sep	CW	6.5	6.0	6.0		
Master of Business Administration (Human Resource Management)	DMMA	083052A	1.5	36,000	Jan, Apr, Jun, Sep	CW	6.5	6.0	6.0		
Master of Business Administration (Marketing)	DMMA	083054K	1.5	36,000	Jan, Apr, Jun, Sep	CW	6.5	6.0	6.0		
Master of Finance	DMFC	082591D	2	35,900	Feb, Aug	CW	6.5	6.0	6.0		
Master of Finance (Financial Planning)	DMFP	098154E	2	35,900	Feb, Aug	CW	6.5	6.0	6.0		
Master of Finance (Global Investment and Trade)	DMFC	0101603	2	35,900	Feb, Aug	CW	6.5	6.0	6.0		
Master of Management	DMMX	091989G	1.5	35,900	Feb, Aug	CW	6.5	6.0	6.0		
Master of Management (Advertising and Brand Management)	DMMX	098292F	1.5	35,900	Feb, Aug	CW	6.5	6.0	6.0		
Master of Management (Human Resource Management)	DMMX	091992A	1.5	35,900	Feb, Aug	CW	6.5	6.0	6.0		
Master of Management (Marketing)	DMMX	091993M	1.5	35,900	Feb, Aug	CW	6.5	6.0	6.0		
Master of Management (Tourism and Event Management)	DMMX	091990C	1.5	35,900	Feb, Aug	CW	6.5	6.0	6.0		
Master of Professional Accounting	DMPC	082982M	2	35,900	Feb, Aug	CW	6.5	6.0	6.0		
UniSA CLINICAL AND HEALTH SCIENCES											
Graduate Certificate in Health Services Management	ICHM	102764G	0.5	28,000	Feb, Jul	CE	6.5		6.5		6.5
Graduate Diploma in Health Services Management	IGHM	102765F	1	28,000	Feb, Jul	CE	6.5		6.5		6.5
Master of Clinical Pharmacy	IMCM	NOTREQ^	1.5	33,600	Feb, Jul	CE	70	70	70		
Master of Health Services Management	IMHM	096783C	2	28,000	Feb, Jul	CE	6.5		6.5		6.5



Postgraduate degrees offered in 2022

							IELTS English language requirements				
Program	Program Code	CRICOS Code	Program Length (years)	2022 Indicative Annual Tuition Fee (A\$)	Start Date(s)	Campus	IELTS Total	IELTS Reading	IELTS Writing	IELTS Listening	IELTS Speaking
UniSA CREATIVE											
Graduate Certificate in Compositing and Tracking	ICVE	088908F	0.5	25,600	Feb, Jul	CE	6.5	6.0	6.0		
Graduate Certificate in Dynamic Effects and Lighting	ICDL	092822M	0.5	25,600	Feb, Jul	CE	6.5	6.0	6.0		
Graduate Certificate in Film and Television	MCFT	095897A	0.5	34,800	Feb, Jul	M	6.5	6.5	6.5		
Graduate Diploma in Communication	DGCO	0100166	1	29,000	Feb, Jul	CW	6.5	6.0	6.0	6.0	6.0
Graduate Diploma in Design (Communication Design)	DGSP	082776F	1	32,600	Feb, Jul	CW	6.5	6.0	6.0		
Graduate Diploma in Design (Contemporary Art)	DGSP	095762E	1	32,600	Feb, Jul	CW	6.5	6.0	6.0		
Graduate Diploma in Design (Design and Construct)	DGSP	082775G	1	32,600	Feb, Jul	CW	6.5	6.0	6.0		
Graduate Diploma in Design (Industrial Design)	DGSP	082774G	1	32,600	Feb, Jul	CW	6.5	6.0	6.0		
Graduate Diploma in Design (Interior Architecture)	DGSP	082773J	1	32,600	Feb, Jul	CW	6.5	6.0	6.0		
Graduate Diploma in Design (Sustainable Design)	DGSP	082772K	1	32,600	Feb, Jul	CW	6.5	6.0	6.0		
Graduate Diploma in Urban and Regional Planning	DGUR	000579A	1	34,800	Feb, Jul	CW	6.5	6.0	6.0		
Master of Architecture	DMAE	060208J	2	35,900	Feb, Jul	CW	6.5	6.0	6.0		
Master of Communication	DMCO	0100167	2	29,000	Feb, Jul	CW	6.5	6.0	6.0	6.0	6.0
Master of Design (Communication Design)	DMSP	082771M	2	32,600	Feb, Jul	CW	6.5	6.0	6.0		
Master of Design (Contemporary Art)	DMSP	095763D	2	32,600	Feb, Jul	CW	6.5	6.0	6.0		
Master of Design (Design and Construct)	DMSP	082770A	2	32,600	Feb, Jul	CW	6.5	6.0	6.0		
Master of Design (Industrial Design)	DMSP	071952G	2	32,600	Feb, Jul	CW	6.5	6.0	6.0		
Master of Design (Interior Architecture)	DMSP	082769E	2	32,600	Feb, Jul	CW	6.5	6.0	6.0		
Master of Design (Sustainable Design)	DMSP	082768F	2	32,600	Feb, Jul	CW	6.5	6.0	6.0		
Master of Urban and Regional Planning	DMUR	071951J	2	34,800	Feb, Jul	CW	6.5	6.0	6.0		
UniSA EDUCATION FUTURES											
Graduate Certificate in Education (Islamic Education)	MCIM	NOTREQ^	0.5	29,300	Feb, Jul	M	6.5	6.0	6.0		
Graduate Certificate in Education Studies (Digital Learning)	MCDL	NOTREQ^	0.5	29,300	Mar, Sep	M	6.5	6.0	6.0		
Graduate Diploma in Education Studies (Digital Learning)	MCDL	NOTREQ^	1	29,300	Mar	M	6.5	6.0	6.0		
Master of Education (TESOL)	MMTL	082450F	2	30,300	Feb, Jul	M	6.5	6.0	6.0		
Master of Teaching (Early Childhood)	MMET	077214E	2	30,300	Feb	M	7.0	7.0	7.0	7.0	7.0
Master of Teaching (Primary)	MMET	077215D	2	30,300	Feb	M	7.0	7.0	7.0	7.0	7.0
Master of Teaching (Secondary)	MMET	077217B	2	30,300	Feb, Jul	ML	7.0	7.0	7.0	7.0	7.0
UniSA JUSTICE AND SOCIETY											
Master of Social Work	MMSK	064242G	2	30,300	Feb	M	7.0	7.0	7.0	7.0	7.0
UniSA STEM											
Graduate Certificate in Building Surveying	ICBE	NOTREQ^	0.5	33,600	Feb, Jul	CE	6.5	6.0	6.0		
Graduate Certificate in Data Science	LCDA	079910J	0.5	34,800	Feb, Jul	ML	6.5	6.0	6.0		
Graduate Certificate in Engineering (Engineering Management)	LCEB	098377A	0.5	36,900	Feb, Jul	ML	6.5	6.0	6.0		
Graduate Certificate in Information Technology	LCIG	081820D	0.5	32,600	Feb, Jul	CW, ML	6.5	6.0	6.0		
Graduate Certificate in Space Studies	LCSD	NOTREQ^	0.5	33,600	Feb, Jul	ML	6.5	6.0	6.0		
Graduate Diploma in Building Surveying	IGBE	NOTREQ^	1	33,600	Feb, Jul	CE	6.5	6.0	6.0		
Graduate Diploma in Data Science	LGDS	079911G	1	34,800	Feb, Jul	ML	6.5	6.0	6.0		
Graduate Diploma in Engineering (Engineering Management)	LGBE	077354D	1	36,900	Feb, Jul	ML	6.5	6.0	6.0		
Graduate Diploma in Information Technology (Enterprise Management)	LGIG	081822B	1	32,600	Feb, Jul	CW, ML	6.5	6.0	6.0		
Graduate Diploma in Project Management	IGBP	013176B	1	34,800	Feb, Jul	CE	6.5	6.0	6.0		
Graduate Diploma in Project Management (Contract Management)	IGBP	098253B	1	34,800	Feb, Jul	CE	6.5	6.0	6.0		
Master of Project and Program Management	IMGM	106890B	1.5	34,800	Feb, Jul	CE	6.5	6.0	6.0		
Master of Applied Project Management (Contract Management)	IMAM	098255M	1.5	34,800	Feb, Jul	CE	6.5	6.0	6.0		
Master of Data Science	LMDS	079912G	2	34,800	Feb, Jul	ML	6.5	6.0	6.0		
Master of Engineering (Civil and Infrastructure)	LMCL	088538E	2	36,900	Feb, Jul	ML	6.5	6.0	6.0		
Master of Engineering (Electrical Power)	LMEL	079908C	2	36,900	Feb, Jul	ML	6.5	6.0	6.0		
Master of Engineering (Engineering Management)	LMEB	077355C	2	36,900	Feb, Jul	ML	6.5	6.0	6.0		
Master of Engineering (Cyber Engineering and Telecommunications)	LMEL	106972M	2	36,900	Feb, Jul	ML	6.5	6.0	6.0		
Master of Engineering (Water Resources Management)	LMCL	088540M	2	36,900	Feb, Jul	ML	6.5	6.0	6.0		
Master of Information Technology (Enterprise Management)	LMIG	081872C	2	32,600	Feb, Jul	CW, ML	6.5	6.0	6.0		
Master of Project Management	IMPA	081832M	2	34,800	Feb, Jul	CE	6.5	6.0	6.0		





University of South Australia

Further information

international.unisa.edu.au

Telephone: +61 8 8302 0114

Email: international@unisa.edu.au

Freecall: (Australia) 1800 1818 58

 [youtube.com/unisouthaustralia](https://www.youtube.com/unisouthaustralia)

 [facebook.com/UniSA](https://www.facebook.com/UniSA)

 twitter.com/UniversitySA

 [instagram/universitysa](https://www.instagram.com/universitysa)

The information provided in this publication is for general information only, and the University of South Australia makes no representation about the content, suitability, accuracy or completeness of this information for any purpose. It is provided "as is" without express or implied warranty.

Information correct at time of printing (November 2021)

CRICOS provider number 00121B



Acknowledgement of Country

UniSA respects the Kaurna, Boandik and Barngarla peoples spiritual relationship with their country.

Artist: Ngupulya Pumani

Find out more about the University's commitment to reconciliation at unisa.edu.au/RAP

