

# 文件下载自万友教育网站

版权归学校所有

www.oneuedu.com

## 万友优势 ADVANTAGE



### 客户信息私密性

录入系统后自动设置权限，除专属的案件专员其他内部人员及外部人员不可见



### 精英团队

文案专员为每位学生一对一定制专属方案，移民律师外部协助。团队为学生带来高质量服务



### 学生案件更新通知

当文案专员每完成一步，会更新在万友系统中，客户会以邮件的形式收到步骤更新通知，查看自己案件的最新进程



### 全程服务透明

无押金等不必要条款，客户案件信息透明，收费项会在案件开始前与客户协商一致，案件开始后无特殊意外情况，不会产生收费项目

## 提供服务 PROVIDE SERVICES

学校  
查询

课程  
查询

学生  
签证

留学  
准备

出发  
准备

绿卡  
资讯



详细流程请扫码  
添加客服为您解答



# International Student

Art  
Architecture  
Business



Building  
Biomedical Sciences  
Communication



Fashion and Textiles  
Health Science  
Information Technology

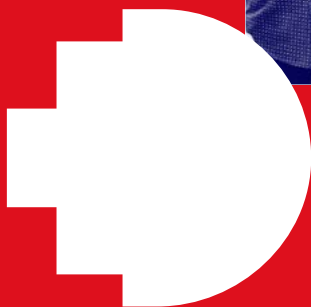


Design  
Education  
Engineering



2023

Law  
Media  
Science  
Social Science



## Course Guide

What's next...





# Contents

Why choose RMIT?	4
Explore our locations	6
Melbourne campus maps	7
Life in Melbourne	8
Life at RMIT	9
Academic English pathways	10
Foundation Studies pathways	10
Get future ready	11
Accommodation and expenses	12
<hr/>	
Architecture	14
Art	15
Biomedical Sciences	16
Building	17
Business	18
Communication	21
Design and Game Design	22
Education	23
Engineering	24
Fashion and Textiles	27
Health Science	28
Information Technology	30
Law	31
Media	32
Social Science	33
Science	34



## A message from the Vice-Chancellor Professor Alec Cameron

At RMIT we are prepared for today and ready for what comes next, because our University is built on a spirit of resilience and a proven ability to adapt with the times.

Through complex times, we continue to learn and change while remaining united around our purpose of providing life-changing experiences for our students, and shaping the world with research, innovation, teaching and industry engagement.

At major moments in history, universities have a central role to play. Right now, RMIT is focused on helping the economies and social systems where we operate navigate the sustained impact of COVID-19 and the recovery ahead. We are doing this through research, government and industry partnerships, and a determination to ensure our students continue to succeed despite the challenges.

We also remain unwavering in our commitment to diversity and inclusion, because there's never been a time when it's more evident that we are stronger and we are smarter together. The pandemic fast-tracked an education evolution in blended learning for our students and hybrid working for our people and we're excited about the possibilities this brings.

Today, more than ever, we need a global mindset, a vision for new ways of collaborating and learning, and a determination to make education and re-skilling available to all.

Powered by the insight and ingenuity of our people, RMIT will evolve and thrive for the decades to come, generating positive impact across the world.

Because at RMIT, we know that education is life changing.

**Professor Alec Cameron**  
Vice-Chancellor and President

## Acknowledgement of Country

RMIT University acknowledges the people of the Woi wurrung and Boon wurrung language groups of the eastern Kulin Nation on whose unceded lands we conduct the business of the University. RMIT University respectfully acknowledges their Ancestors and Elders, past and present.

RMIT also acknowledges the Traditional Custodians and their Ancestors of the lands and waters across Australia where we conduct our business.

Artwork: *Luwaytini* by Mark Cleaver, a proud Palawa person and RMIT Master of Human Resource Management student.



# Why choose RMIT?

RMIT has been awarded 5 QS stars in all possible categories:

- Teaching
- Innovation
- Employability
- Facilities
- Inclusiveness
- Research
- Internationalisation
- Specialist criteria (art and design)

## #1

Number one graduate employment rate in Australia<sup>1</sup>

## #2

Ranked second in the world for our efforts to reduce inequality<sup>2</sup>

## #3

Ranked third in the world for our environmental, social and economic impact<sup>2</sup>

## #4

Ranked fourth in Australia for our partnerships with employers<sup>6</sup>

## #1

Top ranked art and design university in Australia<sup>3</sup>

## #2

Second highest ranked university in the world for blockchain<sup>4</sup>

## #18

18th in the world out of all universities under 50 years old<sup>5</sup>

## 7,697

RMIT students undertook work-integrated learning placements with 3,294 unique global industry partners throughout 2021

## #15

Ranked 15th art and design university in the world<sup>3</sup>

## \$2M+

RMIT Activator has allocated \$2.05M to more than 95 student startups since 2015

## 93,697

students from 197 different countries studying with RMIT

## 3,000+

scholarships awarded to our students in 2021

## Largest

dual-sector university in Australia



### Building a legacy

Winner of the Committee for Melbourne's 2020 'Melbourne Achiever Award'. The prize, awarded to one outstanding organisation each year, recognises RMIT's contribution to the design, cultural offerings, accessibility, greening and sustainability of Melbourne.



### Committed to sustainability

Winner of the Green Gown Award for Continuous Improvement: Institutional Change. RMIT is the only university in Australasia to have received this award twice.



### Champion of inclusion

Winner of three separate awards at the 2019 Australian LGBTI Inclusion Awards, which recognise organisations around the country that foster and support diverse communities.



### Exemplar of good design

RMIT's Swanston Academic Building has been awarded a 5-star green rating and was shortlisted for the World Building of the Year Award in 2013. More recently, RMIT's New Academic Street won the Victorian Architecture Medal in 2018, along with five other prizes.

<sup>1</sup> QS Graduate Employability Rankings 2022

<sup>2</sup> Times Higher Education (THE) University Impact Rankings 2021

<sup>3</sup> QS World University Rankings by Subject 2022

<sup>4</sup> 2021 CoinDesk ranking, conducted in conjunction with Stanford University

<sup>5</sup> QS Top 50 Under 50 2021

<sup>6</sup> 2022 QS Graduate Employability Rankings



Industry Partner



Design Partner



Industry Partner



Research Partner



Industry Supporter



Vocational Education Partner



# Explore our locations

Our award-winning locations are home to a thriving student population.

They are constantly evolving and expanding to meet the needs of our students and of modern university life.



## Melbourne

Situated in the very heart of the central business district (CBD), the City campus has been an iconic part of the Melbourne skyline for more than 130 years.



## Brunswick

Our Brunswick campus is a creative and multicultural hub. It is home to many of RMIT's design courses, including fashion, textiles, graphic and industrial design.



## Flight Training Centres

Our Point Cook and Bendigo sites provide easy access to airspace, terrain and urban development to maximise navigational experiences.



## Europe

Opportunities exist for students to engage with our European centre in Barcelona through study tours, internships and research, as well as online opportunities including industry projects, mentoring and guest lectures.



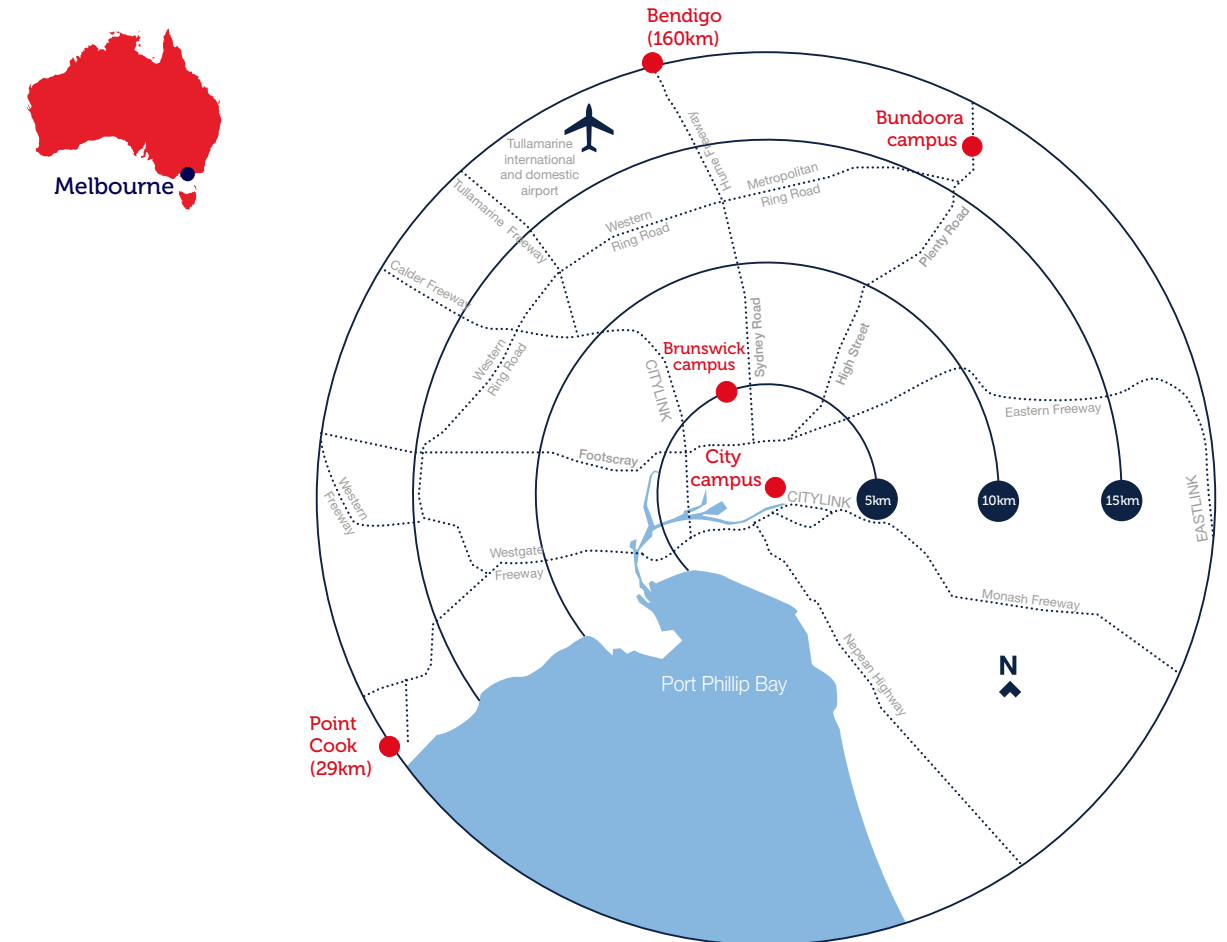
## Bundoora

Situated in the north of Melbourne, the leafy Bundoora campus is home to many of RMIT's education, biomedical, health and science courses.

## Vietnam

Study abroad at RMIT Vietnam and experience an unforgettable semester in Asia. Our beautiful Hanoi and Saigon South campuses offer clean, green environments and expansive study spaces.

# Melbourne campus maps





# Life in Melbourne

Melbourne is a vibrant and welcoming city full of exciting possibilities. Students from more than 190 different countries have chosen to make it their home. Connect with them and create a community of lifelong friends as you experience a world-class qualification.

# Life at RMIT

Whether you're sporty, creative or just curious, RMIT's clubs, collectives, events and trips will help you meet people, make connections and discover more of Melbourne.

## Recreation

Melbourne is known for its beautiful parks and gardens, clean air, open spaces, world-class venues and convenient transport and infrastructure.

- Melbourne is the second most liveable city in the world.<sup>1</sup>
- Melbourne is the third best student city in the world.<sup>2</sup>

## Art, culture and entertainment

Melbourne plays host to more than 8000 festivals, exhibitions and events every year.<sup>4</sup> With a calendar of events spanning art, theatre, music, fashion, food, markets, festivals and concerts, there's always something to do in our bustling city.

- Melbourne has more live music venues per capita than any other city in the world.<sup>5</sup>
- Melbourne is the second city in the world to be designated a UNESCO City of Literature.<sup>6</sup>

## Working while studying

During the semester, students can work up to 40 hours each fortnight. When there are no classes during the semester break, students may work full-time hours without restrictions. Research students are able to work full-time hours throughout the whole year.

For more information about your working conditions, rights and obligations in Australia, visit:

[fairwork.gov.au](https://fairwork.gov.au)

## World-class dining

Melbourne's culinary spirit is world-famous. Whether you're looking to visit a much-loved institution, a lively new wine bar or a dressed-down cafe, Melbourne offers an array of unforgettable dining experiences.

- Melbourne is ranked as the sixth best city in the world for food and dining.<sup>3</sup>

## Sport

Melbourne is the sporting capital of Australia. Watch international sports stars live in action at some of the many sporting events in our city every year. Here are six annual sporting events held in Victoria that are not to be missed:

- The Australian Open
- Formula One Australian Grand Prix
- Rip Curl Pro Bells Beach
- Boxing Day Test
- AFL Grand Final
- The Melbourne Cup

## After graduating

If you complete two years of a bachelor degree, master's degree or PhD in Australia, you could be eligible for a Temporary Graduate visa, which allows you to live in Australia for a further two years or more.

For further information, visit:

[bit.ly/temporary-graduate-485](https://bit.ly/temporary-graduate-485)

[bit.ly/extend-stay](https://bit.ly/extend-stay)

## Kirrip at RMIT

Starting uni can be daunting, especially if you're new to Melbourne, so our Kirrip program is designed to help you settle in and make friends.

'Kirrip' means 'friend' in the Woi wurrung language of the Wurundjeri people, one of the Traditional Owners of Naarm (Melbourne), and RMIT has a large number of Kirrip stewards (existing students) who can answer your questions and show you around. Connect online or in person.

## Melbourne Experiences

From coffee tours and gallery visits to big sporting events, our Melbourne Experiences program is ideal for those who want to discover more of Melbourne and meet people in a small group.

These experiences are led by friendly and helpful Kirrip stewards, and serve as a great starting place to expand your university social network and feel comfortable in your new city.

## Student clubs and communities

From cheerleading to chess, fashion to futsal – whatever you're into, RMIT has a club or society for you.

We have more than 160 student-run clubs that engage more than 15,000 students and alumni, so whether you're chasing adventure, want to meet new people, build new skills, or just do more of something you love – RMIT has the perfect group for you.



Explore life at RMIT at  
[rmit.edu.au/life-at-rmit](https://rmit.edu.au/life-at-rmit)

## Campus life

Uni is about so much more than just going to class. Engaging in campus life is one of the best ways to make lifelong friends and grow, both personally and professionally.

At RMIT, there are hundreds of weekly events for students across all campuses, with free food, music and entertainment. You can unleash your creativity with our public art trails or collaborative art projects, get active with our social sports and excellent fitness facilities, or go on a group trip and visit somewhere you've never been before!

<sup>1</sup> Economist Intelligence Unit's global liveability index 2019  
<sup>2</sup> 2019 QS Best Student Cities Rankings  
<sup>3</sup> Booking.com's list of the 25 best cities for food in the world

<sup>4</sup> According to Melbourne City Council  
<sup>5</sup> 2017 census conducted by Music Victoria and the City of Melbourne  
<sup>6</sup> UNESCO.org – In 2008, it became UNESCO's second City of Literature



# Academic English pathways



Over 50 years' experience teaching academic English



Centrally located within the Melbourne CBD



Face-to-face delivery (online during COVID-19)



International Language Testing Centre

RMIT English Worldwide (REW) delivers the English for Academic Purposes (EAP) program, which prepares you for success at university by teaching you academic English while developing your skills for independent learning and group work at university.

- There are 6 REW levels (Elementary to Advanced Plus) with each level taking 10 weeks of full-time study to complete
- To pathway to your chosen RMIT program, you must successfully complete the academic English level on your letter of offer
- We will place you in a class that matches your most recent IELTS or other recognised English language proficiency test results (not more than 24 months old). See table below for the test result required for each level.

**Note:** If you do not have a recent IELTS score (or English test equivalent) you can complete a Placement Test at RMIT English Worldwide.

For more information, including start dates, fees and enrolment process, visit [rmit.edu.au/english-programs](https://rmit.edu.au/english-programs)

Level of English needed to enter each REW level of study						
Your current IELTS level	3.5	4.0	4.5	5.0	5.5	6.0
Recommended REW level of study	Elementary (10 weeks)	Pre Intermediate (10 weeks)	Intermediate (10 weeks)	Upper Intermediate (10 weeks)	Advanced (10 weeks)	Advanced Plus (10 weeks)

# Foundation Studies pathways



Foundation Studies is your pathway to RMIT University



Curriculum designed for international students



Over 25 years' experience delivering Foundation Studies



Develop skills in critical thinking, independent learning and group work

## Entry level\*

Successful completion of Australian Year 11 or equivalent D average  
IELTS (academic) 5.5 (No band below 5.0)

\* Students must be at least 16 years of age to commence program

## Foundation Studies program

Art, Design and Architecture  
Business  
Communication and Social Context  
Engineering and Science  
Health  
Information Technology

## RMIT University

Degree  
Associate Degree  
Diploma

## Dates

Foundation Studies commencement dates:

- 31 January 2023
- 18 July 2023
- 29 August 2022 (Business and Engineering and Science Streams only)



To find out about the guaranteed pathway requirements

# Get future ready

Find a job, plan your career and check out all the opportunities for work and study at RMIT.

## Job Shop

RMIT's Job Shop is your drop-in service centre for all things career-related. Job Shop offers services such as:

- help finding and applying for casual, part-time and graduate jobs
- free résumé and cover letter workshops
- industry events and networking sessions
- one-on-one career consultation appointments
- course or program advice

[rmit.edu.au/jobshop](https://rmit.edu.au/jobshop)

## RMIT Activator

Activator is RMIT's home of entrepreneurship. Its workshops, online learning and startup programs position students to solve the biggest problems out there and take on the future of work. At Activator, you can access mentors, attend masterclasses, request business coaching, apply for funding and learn the enterprise skills you need to support your ideas.

No matter what your future looks like, plug into Activator's ecosystem of entrepreneurs, intrapreneurs, startup founders and innovators and let it help you on your journey to success.

[rmitactivator.edu.au](https://rmitactivator.edu.au)

## RMIT Creds

RMIT Creds are a suite of micro-credentials that help develop your skill set beyond your area of study. These credentials have been co-designed with industry to ensure you're ready for the changing world of work. They cover subjects such as digital literacy, leadership, sustainability, innovation, collaboration and communication.

Most Creds are available online and are short in duration, ranging from 60-minute snippets to several hours of learning. After you complete a Cred, you can claim a digital badge, which is a verified certification and a great way to communicate your achievements. You publish and manage your badge using Credly, RMIT's credentialing platform partner. From there you can share your badge with peers, clients, employers or on social networks such as LinkedIn.

[rmit.edu.au/creds](https://rmit.edu.au/creds)

## Work-integrated learning (WIL)

WIL is an activity where you apply your academic learning in a real-life situation with an industry or community partner.

Higher education and vocational education students can complete a WIL activity, which is formally assessed for credit towards your qualification. The type of WIL activities you undertake will depend on your program and study discipline, and can occur on or off campus. They may be:

- work placements such as clinical placements, internships or field education or professional practices
- projects with industry and community-based organisations
- art projects with exhibitions
- WIL simulations like activities where you practice using technology, equipment or activities that are not possible to complete in an industry setting e.g. moot courts

## Future Edge employability program

Future Edge is a flexible, co-curricular program designed to increase the employability of RMIT students. The program helps you to craft and build your 'personal brand' in order to stand out in an increasingly competitive employment landscape. You can complete the program at your own pace while studying, and it will complement your time at RMIT by helping you build industry-specific and practical skills.

Throughout Future Edge, you will:

- set up a personalised plan that outlines your employability goals and skill gaps
- build your skills and experiences by participating in co-curricular activities such as workshops, industry events, volunteering and part-time work
- learn how to communicate your skills and experiences to potential employers, shape your résumé and boost your online portfolio

[rmit.edu.au/future-edge](https://rmit.edu.au/future-edge)



# Accommodation and expenses

Melbourne is a fantastic city, but before you make your big move you'll need to do some research.



## Our student accommodation partners

Want to live somewhere fully furnished, reasonably priced and with other students? Take a look at our recommended student apartments close to our City and Brunswick campuses:

[rmit.edu.au/studentaccommodation](https://rmit.edu.au/studentaccommodation)

## Living on campus

If you want to have RMIT on your doorstep, UniLodge at our Bundoora West campus might be for you. RMIT's state-of-the-art student accommodation offers a range of self-contained apartments, with rent, electricity, gas, water and internet all included in the cost.

Check out

[unilodge.com.au/unilodge-rmit-bundoora](https://unilodge.com.au/unilodge-rmit-bundoora)

## Before you arrive

If you are new to Melbourne, we recommend that you arrive at least two to three weeks before the start of classes to give you time to arrange long-term accommodation. Short-stay accommodation can provide a place for you to stay while you are looking.



## When you arrive

When you arrive in Melbourne, we recommend you meet with a student support advisor at RMIT Connect for advice on researching and inspecting properties. Our advisors can help you navigate the accommodation options below.



## Short-term accommodation

It's a good idea to get to know the areas surrounding your campus before you commit to moving into a place long term. You can try renting temporary lodgings to get a taste of your location. See the link below for a selection of short-stay accommodation providers recommended by RMIT.

[rmit.edu.au/temporary-accommodation](https://rmit.edu.au/temporary-accommodation)

## Long-term accommodation

Every suburb in Melbourne has its own unique character, so once you find a place that suits your personality and lifestyle you can choose a longer-term option.

[rmit.edu.au/long-term-accommodation](https://rmit.edu.au/long-term-accommodation)

And if you want to have RMIT right on your doorstep, UniLodge at our Bundoora West campus might be for you.

[unilodge.com.au/unilodge-rmit-bundoora](https://unilodge.com.au/unilodge-rmit-bundoora)

## Establishment costs

Before moving to Melbourne, you'll need to put aside \$AU3000 – 5000 to cover your set-up costs, such as a rental deposit, one month's rent in advance, furniture and household items.

Many student apartments come fully furnished, but most private rental homes do not. Ongoing costs will depend on your location and lifestyle.

## Average weekly expenses in Melbourne

Expense	\$AU
<b>Rent (shared between two people)*</b>	
■ <b>City</b>	
– house	190
– unit	185
■ <b>Brunswick</b>	
– house	305
– unit	190
■ <b>Bundoora</b>	
– house	215
– unit	180
<b>Electricity and gas**</b>	10 – 20
<b>Phone and internet**</b>	15 – 30
<b>Public transport**</b>	30 – 60
<b>Entertainment**</b>	80 – 150
<b>Groceries and eating out</b>	140 – 280
<b>Estimated weekly total</b>	460 – 825

## Are you under 18?

If you'll be under the age of 18 when you arrive in Australia, you must have accommodation and welfare arrangements organised and approved either by the Department of Home Affairs or RMIT before you leave home. This is to ensure you have proper day-to-day support to keep you safe and well.

[rmit.edu.au/temporary-accommodation](https://rmit.edu.au/temporary-accommodation)

## Free airport pick-up

If you're a new international student, take advantage of RMIT's free airport pick-up service. For information on submitting your pick-up request, visit

[rmit.edu.au/prepare-to-arrive](https://rmit.edu.au/prepare-to-arrive)

\* Average rental prices (as at April 2022) taken from realestate.com.au

\*\* Average utility costs (as at April 2022) taken from studyinaustralia.gov.au



#3

in Australia  
for architecture<sup>1</sup>

#31

in the world  
for architecture<sup>1</sup>



### Victorian Architecture Medal

Practices led by RMIT staff, adjunct professors or alumni have received the Victorian Architecture Medal every year from 2013 to 2020



### Excellence in research

RMIT's research in architecture is rated as above world standard<sup>2</sup>



### Learn abroad

Study in the heart of Los Angeles with our exchange partner, Southern California Institute of Architecture

<sup>1</sup> QS World University Rankings by Subject 2022

<sup>2</sup> Excellence in Research Australia 2018 National Report



For more information visit  
[rmit.edu.au/architecture](https://rmit.edu.au/architecture)

# Architecture

ARCHITECTURE										
Advanced Diploma of Building Design (Architectural)	2 years	City	Feb Jul	\$59,250*	C6161	6.0 (5.5)	50%	-	-	-
Bachelor of Architectural Design	3 years	City	Feb Jul	\$48,000	BP250	6.5 (6.0)	-	Y	-	B
Bachelor of Landscape Architectural Design	3 years	City	Feb Jul	\$44,160	BP256	6.5 (6.0)	70%	Y	-	B, E
Master of Architecture	2 years	City	Feb Jul	\$47,040	MC163	6.5 (6.0)	-	Y	Y	-
Master of Landscape Architecture	2 years	City	Feb Jul	\$44,160	MC172	6.5 (6.0)	-	Y	Y	E
INTERIOR DESIGN										
Diploma of Interior Design	2 years	City	Feb Jul	\$48,500*	C5396	5.5 (5.0)	50%	Y	-	-
Associate Degree in Interior Decoration and Design	2 years	City	Feb Jul	\$32,640	AD020	6.0 (5.5)	60%	Y	Y	-
Bachelor of Interior Design (Honours)	4 years	City	Feb Jul	\$44,160	BH115	6.5 (6.0)	70%	Y	Y	B, O
Master of Interior Design	2 years	City	Feb Jul	\$44,160	MC275	6.5 (6.0)	-	Y	Y	-
URBAN DESIGN										
Master of Urban Design	2 years	City	Feb Jul	\$46,920	MC193	6.5 (6.0)	-	Y	-	E
RESEARCH										
Master of Design (Architecture and Design)	2 years	-	All year	\$39,360	MR207	6.5 (6.0)	60%	-	-	FF
PhD (Architecture and Design)	4 years	-	All year	\$39,360	DR207	6.5 (6.0)	70%	Y	-	FF

#### Footnotes

- B July entry may be available to students who are granted course/subject exemptions or advanced entry based on previous study.  
E This course incurs additional costs.  
O This is a combined bachelor and honours degree, and entry is based on senior high school qualifications. Upon completion of this program, students graduate with honours without having to undertake an additional year of study. An honours degree allows you to deepen your knowledge and develop your research, analytical and communication skills, and it is a pathway into postgraduate and higher degree by research studies.  
FF Refer to [rmit.edu.au/how-to-apply-for-research](https://rmit.edu.au/how-to-apply-for-research) for reference.  
\* Total fee

#### KEY:

Duration Campus Intake/s \$ 2023 2023 annual fee (\$AU) IELTS Academic IELTS Overall Band (Individual Band) – subject to change  
 RMIT Code Entry requirement (min average % or GPA) Selection task Pathways Notes

# Art

FINE AND VISUAL ARTS										
Diploma of Visual Arts	1 year	City	Feb Jul	\$22,500*	C5414	5.5 (5.0)	50%	Y	-	-
Advanced Diploma of Visual Arts	1 year	City	Feb Jul	\$22,500*	C6149	5.5 (5.0)	-	Y	Y	A
Bachelor of Arts (Fine Art)	3 years	City	Feb Jul	\$38,400	BP201	6.5 (6.0)	65%	Y	Y	B
Master of Arts (Arts Management)	2 years	City	Feb Jul	\$36,480	MC280	6.5 (6.0)	-	-	-	-
Master of Arts (Art in Public Space)	2 years	City	Feb Jul	\$36,480	MC281	6.5 (6.0)	-	Y	-	E
Master of Fine Art	2 years	City	Feb Jul	\$36,480	MC266	6.5 (6.0)	-	Y	-	-
PHOTOGRAPHY										
Certificate IV in Photography and Photo Imaging	1 year	City	Feb	\$24,000*	C4373	5.5 (5.0)	50%	Y	-	E
Diploma of Photography and Digital Imaging	1 year	City	Feb	\$22,750*	C5411	5.5 (5.0)	-	Y	Y	A
Bachelor of Arts (Photography)	3 years	City	Feb Jul	\$38,400	BP117	6.5 (6.0)	65%	Y	Y	B, E
Master of Photography	2 years	City	Feb Jul	\$36,480	MC270	6.5 (6.0)	-	Y	-	-
HONOURS										
Bachelor of Arts (Fine Art) (Honours)	1 year	City	Feb	\$36,480	BH052	6.5 (6.0)	2.0	Y	-	K
Bachelor of Arts (Photography) (Honours)	1 year	City	Feb Jul	\$36,480	BH125	6.5 (6.0)	2.0	Y	-	K
RESEARCH										
Master of Fine Art	2 years	-	All year	\$33,600	MR208	6.5 (6.0)	60%	-	-	FF
PhD (Art)	4 years	-	All year	\$33,600	DR208	6.5 (6.0)	70%	-	-	FF

#### Footnotes

- A This course is only available for advanced entry.  
B July entry may be available to students who are granted course/subject exemptions or advanced entry based on previous study.  
E This course incurs additional costs.  
K This is a one-year full time honours degree that is available for high-performing students to apply after finishing their undergraduate degree in the relevant discipline. An honours degree allows you to deepen your knowledge and develop your research, analytical and communication skills, and it is a pathway into postgraduate and higher degree by research studies.  
FF Refer to [rmit.edu.au/how-to-apply-for-research](https://rmit.edu.au/how-to-apply-for-research) for reference.  
\* Total fee.

#### KEY:

Duration Campus Intake/s \$ 2023 2023 annual fee (\$AU) IELTS Academic IELTS Overall Band (Individual Band) – subject to change  
 RMIT Code Entry requirement (min average % or GPA) Selection task Pathways Notes

#1

in Australia and  
Oceania for  
art and design<sup>1</sup>

#15

in the world for  
art and design<sup>1</sup>



### 130+ years

RMIT offers one of the longest continuously running photography programs in the world



### 8 specialisations

- ceramics
- drawing
- gold and silversmithing
- painting
- print
- photography
- sculpture
- video and sound



### 5 galleries

RMIT owns and operates five public galleries and exhibition spaces

<sup>1</sup> QS World University Rankings by Subject 2022



For more information visit  
[rmit.edu.au/art](https://rmit.edu.au/art)



# Biomedical Sciences

In 2023, our STEM courses (Science, Technology, Engineering and Maths) are going to look a bit different. At RMIT, we know how important STEM is to ensuring that we all enjoy a future that's healthy, sustainable and connected. We want our STEM students to discover their interests, pursue their passions, and graduate with the skills to navigate a complex and fast-changing world. Which is why, after extensive consultation with industry and community and months of planning, we're changing our STEM courses to offer you an even better student experience.

We'll still be offering many of the same courses in 2023; they'll just look a bit different. Some of the key features we're introducing include:

- common first-year blocks of study and stackable structures that allow you to easily switch between courses or disciplines, with your prior learning counting towards your new course of study
- the option to undertake a whole-of-semester work-integrated learning (WIL) experience, which will count towards your degree
- new majors and minors, including some cross-disciplinary specialisations. You'll even be able to study a second major in certain courses
- guaranteed pathways into certain courses, as well as early exit awards
- future technology skills, which are essential for all future STEM graduates, will be taught throughout all our courses

## Study areas

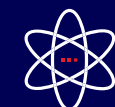
- Biomedical science
- Biotechnology
- Laboratory medicine



### Excellence in research<sup>1</sup>

RMIT's research is ranked well above world standard in:

- clinical sciences
- pharmacology and pharmaceutical sciences



### Australian Institute of Medical Scientists

RMIT's Bachelor of Biomedical Science (Laboratory Medicine) is the only Victorian degree accredited by the Australian Institute of Medical Scientists (AIMS)

- Pharmacy
- Pharmaceutical sciences



### Only Victorian university

to offer all the following majors:

- haematology
- anatomical pathology
- medical microbiology
- clinical biochemistry
- transfusions and transplantation science



### Study abroad

Laboratory medicine provides opportunities for students to travel overseas and undertake 10 to 13 weeks of professional practice in an approved lab

Biomedical sciences help us understand disease, how it occurs and how we can control, cure and prevent it. Biomedical sciences at RMIT will teach you to provide practical solutions to global health issues and gain a better understanding of the ever-increasing role that technology plays in how our bodies function.

All our courses are co-designed with industry to ensure they are relevant and meet the needs of industry, government and the community. They will prepare you to work anywhere in Australia in diagnostic pathology, medical research pharmacy, laboratory medicine, pharmaceutical sciences and biomedical research.



For the most up-to-date information on all our biomedical science courses, visit [rmit.edu.au/biomedical-sciences](https://rmit.edu.au/biomedical-sciences)

# Building

BUILDING AND TRADES												
	⌚	📍	📅	\$ 2023	📄	IELTS	✓	📝	📈	📌		
Diploma of Building and Construction (Building)	2 years	City	Feb Jul	\$40,000*	C5415	5.5 (5.0)	50%	-	-	-	-	-
Graduate Certificate in Occupational Health and Safety	0.5 year	City	Feb Jul	\$20,160	GC035	6.5 (6.0)	-	-	-	-	-	-
Graduate Diploma in Occupational Health and Safety	1 year	City	Feb Jul	\$40,320	GD052	6.5 (6.0)	-	-	Y	-	-	-
Master of Occupational Health and Safety	2 years	City	Feb Jul	\$40,320	MC282	6.5 (6.0)	-	-	Y	-	-	-
CIVIL ENGINEERING												
See page 24 for details												
CONSTRUCTION AND PROJECT MANAGEMENT												
Bachelor of Applied Science (Construction Management) (Honours)	4 years	City	Feb Jul	\$38,400	BH114	6.5 (6.0)	65%	-	Y	O	-	-
Bachelor of Applied Science (Project Management) (Honours)	4 years	City	Feb Jul	\$38,400	BH112	6.5 (6.0)	65%	-	Y	O	-	-
Graduate Certificate in Project Management	0.5 year	City	Feb Jul	\$22,080	GC042	6.5 (6.0)	-	-	-	-	-	-
Graduate Diploma in Project Management	1 year	City	Feb Jul	\$44,160	GD194	6.5 (6.0)	-	-	Y	-	-	-
Master of Project Management	2 years	City	Feb Jul	\$44,160	MC210	6.5 (6.0)	-	-	Y	-	-	-
PROPERTY AND VALUATION												
Bachelor of Applied Science (Property and Valuation) (Honours)	4 years	City	Feb Jul	\$38,400	BH113	6.5 (6.0)	65%	-	Y	O	-	-
Graduate Certificate in Property	0.5 year	City	Feb Jul	\$21,120	GC051	6.5 (6.0)	-	-	-	-	-	-
Graduate Diploma in Property	1 year	City	Feb Jul	\$42,240	GD090	6.5 (6.0)	-	-	Y	-	-	-
Master of Property	2 years	City	Feb Jul	\$42,240	MC212	6.5 (6.0)	-	-	Y	-	-	-
SURVEYING AND GEOSPATIAL SCIENCES												
See page 34 for details												
SUSTAINABLE PRACTICES												
Diploma of Conservation and Ecosystem Management	2 years	City	Feb	\$40,000*	C5418	5.5 (5.0)	50%	-	-	-	-	-
Bachelor of Environment and Society	3 years	City	Feb	\$32,640	BP000	6.5 (6.0)	70%	-	-	E	-	-
Graduate Certificate in Energy Efficient and Sustainable Building	0.5 year	City	Feb	\$21,120	GC163	6.5 (6.0)	-	-	-	-	-	-
Graduate Diploma in Energy Efficient and Sustainable Building	1 year	City	Feb Jul	\$42,240	GD189	6.5 (6.0)	-	-	Y	-	-	-
Master of Energy Efficient and Sustainable Building	2 years	City	Feb Jul	\$42,240	MC209	6.5 (6.0)	-	-	Y	-	-	-
URBAN PLANNING												
Bachelor of Urban and Regional Planning (Honours)	4 years	City	Feb Jul	\$32,640	BH108	6.5 (6.0)	70%	-	-	O	-	-
Master of Urban Planning and Environment	2 years	City	Feb Jul	\$35,520	MC221	6.5 (6.0)	2.5	-	-	-	-	-
RESEARCH												
Master of Social Science (Global, Urban and Social Studies)	2 years	-	All year	\$30,720	MR210	6.5 (6.0)	60%	-	-	FF	-	-
Master of Applied Science (Built Environment)	2 years	-	All year	\$33,600	MR212	6.5 (6.0)	60%	-	-	FF	-	-
PhD (Built Environment)	4 years	-	All year	\$33,600	DR212	6.5 (6.0)	70%	-	-	FF	-	-
PhD (Global, Urban and Social Studies)	4 years	-	All year	\$30,720	DR210	6.5 (6.0)	70%	-	-	FF	-	-

#### Footnotes

E This course incurs additional costs.

O This is a combined bachelor and honours degree, and entry is based on senior high school qualifications. Upon completion of this program, students graduate with honours without having to undertake an additional year of study. An honours degree allows you to deepen your knowledge and develop your research, analytical and communication skills, and it is a pathway into postgraduate and higher degree by research studies.

FF Refer to [rmit.edu.au/how-to-apply-for-research](https://rmit.edu.au/how-to-apply-for-research) for reference.

\* Total fee.

#### KEY:

⌚ Duration 📍 Campus 📅 Intake/s \$ 2023 2023 annual fee (\$AU) IELTS Academic IELTS Overall Band (Individual Band) – subject to change 📄 RMIT Code ✓ Entry requirement (min average % or GPA) 📝 Selection task 📈 Pathways 📌 Notes

# 1 of 3

Australian universities ranked as above world standard in building research<sup>1</sup>

# 250+

## employers of choice

RMIT's property, construction and project management courses maintain relationships with 250+ industry connections through our Employer of Choice program



## Industry accreditation

RMIT's courses are accredited by:

- Australian Institute of Building
- Royal Institution of Chartered Surveyors
- Chartered Institute of Building
- Australian Institute of Quantity Surveyors
- Planning Institute of Australia
- The Environment Institute of Australia and New Zealand



## New technologies

RMIT's construction management courses are among the first in the world to embed 4K spherical virtual technology and building information modelling into the curriculum

<sup>1</sup> Excellence in Research Australia 2018 report by the Australian Research Council



For more information visit [rmit.edu.au/building](https://rmit.edu.au/building)



Second highest ranked university in the world for blockchain<sup>1</sup>

RMIT's MBA is ranked 9th in the world for the diversity of its class and faculty<sup>2</sup>

RMIT Activator has allocated \$2.05M to more than 95 student startups since 2015

Among the world's top 100 universities in Accounting & Finance<sup>2</sup>

Business

ACCOUNTING											
				2023		IELTS					
Advanced Diploma of Accounting	1 year	City	Feb Jul	\$22,750*	C6163	5.5 (5.0)	-	-	Y	A	
Certificate IV in Accounting and Bookkeeping	0.5 year	City	Feb Jul	\$11,750*	C4398	5.5 (5.0)	-	-	-	-	
Diploma of Accounting	0.5 year	City	Feb Jul	\$11,500*	C5390	5.5 (5.0)	-	-	Y	A	
Graduate Certificate in Blockchain Enabled Business	0.5 year	City	Feb	\$21,600	GC180	6.5 (6.0)	-	-	-	-	
Graduate Certificate in Professional Accounting	0.5 year	City	Feb Jul	\$21,600	GC119	6.5 (6.0)	-	-	-	G	
Master of Blockchain Enabled Business	1.5 years	City	Feb	\$43,200	MC279	6.5 (6.0)	-	-	Y	-	
Master of Professional Accounting	1.5 years 2 years	City	Feb Jul	\$43,200	MC194	6.5 (6.0)	-	-	Y	Q	
BUSINESS AND ADMINISTRATION											
Diploma of Business	1 year	City	Feb Jul	\$11,750*	C5406	5.5 (5.0)	50%	-	-	-	
Diploma of Commerce	1 year	City	Feb Jul	\$30,720*	DP003	5.5 (5.0)	50%	-	-	N	
Associate Degree in Business	2 years	City	Feb Jul	\$31,680	AD010	6.0 (5.5)	50%	-	Y	-	
Bachelor of Business	3 years	City	Feb Jul	\$40,320	BP343	6.5 (6.0)	65%	-	Y	-	
Bachelor of Business (Professional Practice)	4 years	City	Feb Jul	\$40,320	BP344	6.5 (6.0)	75%	-	Y	T	
Graduate Certificate of Commerce	0.5 year	City	Feb Jul	\$21,600	GC104	6.5 (6.0)	-	-	-	G	
Master of Commerce	1.5 years 2 years	City	Feb Jul	\$43, 200	MC205	6.5 (6.0)	-	-	Y	Q	
ECONOMICS AND FINANCE											
Graduate Certificate in Finance	0.5 year	City	Feb Jul	\$21,600	GC048	6.5 (6.0)	-	-	-	G	
Master of Finance	1.5 years 2 years	City	Feb Jul	\$43,200	MC201	6.5 (6.0)	-	-	Y	Q	
ENGINEERING MANAGEMENT											
See page 25 for details											
INFORMATION SYSTEMS											
Graduate Certificate in Business Information Technology	0.5 year	City	Feb Jul	\$21,600	GC099	6.5 (6.0)	-	-	-	G	
Master of Business Information Technology	1.5 years 2 years	City	Feb Jul	\$43,200	MC200	6.5 (6.0)	-	-	Y	Q	
INTERNATIONAL BUSINESS											
Graduate Certificate in International Business	0.5 year	City	Feb Jul	\$21,600*	GC153	6.5 (6.0)	-	-	-	G	
Master of International Business	1.5 years 2 years	City	Feb Jul	\$43,200	MC192	6.5 (6.0)	-	-	Y	Q	

Footnotes

- A This course is only available for advanced entry.
- G Please note that the fee advertised is for the actual course duration advertised.
- N This course is a Higher Education diploma.
- Q Students admitted with a degree or higher level of qualification in business (or a related discipline) may complete this course in 1.5 years.
- T This program has a compulsory work placement, up to a total of 960 hours of work-based training. For further information on the program structure including work-based training, please refer to <https://www.rmit.edu.au/study-with-us/levels-of-study/undergraduate-study/bachelor-degrees/bachelor-of-business-professional-practice-bp344>
- \* Total fee.

KEY:

Duration Campus Intake/s 2023 2023 annual fee (\$AU) IELTS Academic IELTS Overall Band (Individual Band) – subject to change RMIT Code Entry requirement (min average % or GPA) Selection task Pathways Notes

MANAGEMENT AND LEADERSHIP											
				2023		IELTS					
Bachelor of Applied Science (Aviation) / Bachelor of Business (Management)	4 years	City	Feb Jul	\$46,440	BP284	6.5 (6.0)	70%	-	-	-	
Bachelor of Environmental Science/ Bachelor of Business (Management)	4 years	City	Feb Jul	\$42,120	BP161	6.5 (6.0)	70%	-	-	-	
Bachelor of Science (Applied Science) / Bachelor of Business (Management)	4 years	City	Feb Jul	\$42,120	BP305	6.5 (6.0)	70%	-	-	-	
Bachelor of Science (Food Technology) / Bachelor of Business (Management)	4 years	City Bundoora	Feb Jul	\$42,120	BP289	6.5 (6.0)	70%	-	-	W	
Graduate Certificate in Business Administration	0.5 year	City	Feb Jul	\$24,000	GC047	6.5 (6.0)	1	-	-	-	
Graduate Certificate in Business Administration (Executive)	0.5 year	City	Feb Jul	\$24,960	GC129	6.5 (6.0)	2	Y	-	G	
Graduate Certificate in Human Resource Management	0.5 year	City	Feb Jul	\$21,600	GC161	6.5 (6.0)	-	-	-	-	
Executive Master of Business Administration	1.5 years	City	Feb Jul	\$50,880	MC162	6.5 (6.0)	2	Y	Y	-	
Master of Business Administration	1.5 years 2 years	City	Feb Jul	\$48,000	MC199	6.5 (6.0)	1	-	Y	Q	
Master of Human Resource Management	1.5 years 2 years	City	Feb Jul	\$43,200	MC263	6.5 (6.0)	-	-	Y	Q	
MARKETING											
Graduate Certificate in Marketing	0.5 year	City	Feb Jul	\$21,600	GC053	6.5 (6.0)	-	-	-	G	
Master of Advertising	2 years	City	Feb Jul	\$36,480	MC249	6.5 (6.0)	2.5	-	-	-	
Master of Marketing	1.5 years 2 years	City	Feb Jul	\$43,200	MC197	6.5 (6.0)	-	-	Y	Q	
MATHEMATICS, STATISTICS AND ANALYTICS											
See page 33 for details											
SUPPLY CHAIN AND LOGISTICS											
Graduate Certificate in Supply Chain and Logistics Management	0.5 year	City	Feb Jul	\$21,600	GC055	6.5 (6.0)	-	-	-	G	
Master of Supply Chain and Logistics Management	1.5 years 2 years	City	Feb Jul	\$43,200	MC198	6.5 (6.0)	-	-	Y	Q	
HONOURS											
Bachelor of Business (Honours)	1 year	City	Feb	\$40,320	BH064	6.5 (6.0)	2.5	Y	-	K	
Bachelor of Engineering (Advanced Manufacturing and Mechatronics) (Honours) / Bachelor of Business (International Business)	5 years	City	Feb Jul	\$46,464	BH086	6.5 (6.0)	70%	-	-	O	

Footnotes

- G Please note that the fee advertised is for the actual course duration advertised.
- K This is a one-year full time honours degree that is available for high-performing students to apply after finishing their undergraduate degree in the relevant discipline. An honours degree allows you to deepen your knowledge and develop your research, analytical and communication skills, and it is a pathway into postgraduate and higher degree by research studies.
- O This is a combined bachelor and honours degree, and entry is based on senior high school qualifications. Upon completion of this program, students graduate with honours without having to undertake an additional year of study. An honours degree allows you to deepen your knowledge and develop your research, analytical and communication skills, and it is a pathway into postgraduate and higher degree by research studies.
- Q Students admitted with a degree or higher level of qualification in business (or a related discipline) may complete this course in 1.5 years.
- W Classes for this course are delivered across the City and Bundoora campuses. Students may be required to attend both locations.

KEY:

Duration Campus Intake/s 2023 2023 annual fee (\$AU) IELTS Academic IELTS Overall Band (Individual Band) – subject to change RMIT Code Entry requirement (min average % or GPA) Selection task Pathways Notes

<sup>1</sup> QS MBA Career Specialization rankings 2021

<sup>2</sup> QS University Rankings by Subject 2022



For more information visit [rmit.edu.au/business](https://www.rmit.edu.au/business)



RESEARCH										
				\$ 2023		IELTS				
Master of Business (Accountancy)	2 years	-	All year	\$33,600	MR200	6.5 (6.0)	-	-	Y	FF
Master of Business (Business Information Systems)	2 years	-	All year	\$33,600	MR201	6.5 (6.0)	-	-	Y	FF
Master of Business (Business and Law)	2 years	-	All year	\$33,600	MR205	6.5 (6.0)	-	-	Y	FF
Master of Business (Economics, Finance and Marketing)	2 years	-	All year	\$33,600	MR203	6.5 (6.0)	-	-	Y	FF
Master of Business (Management)	2 years	-	All year	\$33,600	MR204	6.5 (6.0)	-	-	Y	FF
Master of Business (Supply Chain and Logistics)	2 years	-	All year	\$33,600	MR202	6.5 (6.0)	-	-	Y	FF
PhD (Accountancy)	4 years	-	All year	\$37,440	DR200	6.5 (6.0)	-	-	Y	FF
PhD (Business Information Systems)	4 years	-	All year	\$37,440	DR201	6.5 (6.0)	-	-	Y	FF
PhD (Business)	4 years	-	All year	\$37,440	DR205	6.5 (6.0)	-	-	Y	FF
PhD (Economics, Finance and Marketing)	4 years	-	All year	\$37,440	DR203	6.5 (6.0)	-	-	Y	FF
PhD (Law)	4 years	-	All year	\$37,440	DR206	6.5 (6.0)	-	-	Y	FF
PhD (Management)	4 years	-	All year	\$37,440	DR204	6.5 (6.0)	-	-	Y	FF
PhD (Supply Chain and Logistics)	4 years	-	All year	\$37,440	DR202	6.5 (6.0)	-	-	Y	FF

**Footnotes**  
FF Refer to [rmit.edu.au/how-to-apply-for-research](https://rmit.edu.au/how-to-apply-for-research) for reference.

**KEY:**  
 Duration Campus Intake/s \$ 2023 2023 annual fee (\$AU) IELTS Academic IELTS Overall Band (Individual Band) – subject to change  
 RMIT Code Entry requirement (min average % or GPA) Selection task Pathways Notes

# Communication

ADVERTISING										
				\$ 2023		IELTS				
Bachelor of Communication (Advertising)	3 years	City	Feb Jul	\$36,480	BP219	6.5 (6.0)	65%	Y	-	B
Master of Advertising	2 years	City	Feb Jul	\$36,480	MC249	6.5 (6.0)	2.5	-	-	-
COMMUNICATION AND WRITING										
Associate Degree in Professional Writing and Editing	2 years	City	Feb	\$32,640	AD016	6.0 (5.5)	60%	Y	-	C
Bachelor of Communication (Journalism)	3 years	City	Feb Jul	\$36,480	BP220	6.5 (6.0)	65%	-	Y	B
Bachelor of Communication (Professional Communication)	2.5 years 3 years	City	Feb Jul	\$43,776 (2.5 years) \$36,480 (3 years)	BP222	6.5 (6.0)	65%	-	-	L
Bachelor of Communication (Public Relations)	3 years	City	Feb Jul	\$36,480	BP223	6.5 (6.0)	65%	-	Y	C, B
Bachelor of Arts (Creative Writing)	3 years	City	Feb Jul	\$36,480	BP257	6.5 (6.0)	65%	Y	Y	J, B
Graduate Diploma in Journalism	1 year	City	Feb	\$29,760	GD074	7.0 (6.5)	-	Y	-	-
Master of Communication	2 years	City	Feb Jul	\$37,440	MC248	6.5 (6.0)	2.5	-	-	-
Master of Writing and Publishing	2 years	City	Feb Jul	\$36,480	MC262	7.0 (6.5)	2.5	-	-	-
GRAPHIC AND COMMUNICATION DESIGN										
See page 22 for details										
MARKETING										
See page 19 for details										
LANGUAGES, TRANSLATING AND INTERPRETING										
See page 35 for details										
HONOURS										
Bachelor of Media and Communication (Honours)	1 year	City	Feb	\$36,480	BH066	6.5 (6.0)	3	Y	-	K
RESEARCH										
Master of Design (Media and Communication)	2 years	-	All year	\$33,600	MR211	6.5 (6.0)	60%	-	-	FF
PhD (Media and Communication)	4 years	-	All year	\$33,600	DR211	6.5 (6.0)	70%	-	-	FF

**Footnotes**  
B July entry may be available to students who are granted course/subject exemptions or advanced entry based on previous study.  
C This course includes a professional work placement.  
J Please note that whilst the Bachelor of Arts (Creative Writing) program is open to international students as a 3 year degree, the program invites applications from students who hold relevant Diplomas, Advanced Diplomas, Associate degrees or industry experience equivalent for entry into the 2nd year.  
K This is a one-year full time honours degree that is available for high-performing students to apply after finishing their undergraduate degree in the relevant discipline. An honours degree allows you to deepen your knowledge and develop your research, analytical and communication skills, and it is a pathway into postgraduate and higher degree by research studies.  
L This version of the communication course is meant for year one commencement for July entry. The course structure is accelerated. It consists of six semesters over 2.5 calendar years by undertaking four first-year courses in intensive mode over spring (Nov/Dec) and (Jan/Feb) summer semesters.  
FF Refer to [rmit.edu.au/how-to-apply-for-research](https://rmit.edu.au/how-to-apply-for-research) for reference.

**KEY:**  
 Duration Campus Intake/s \$ 2023 2023 annual fee (\$AU) IELTS Academic IELTS Overall Band (Individual Band) – subject to change  
 RMIT Code Entry requirement (min average % or GPA) Selection task Pathways Notes

## #4

in Australia for communication and media studies<sup>1</sup>

## #40

in the world for communication and media studies<sup>1</sup>

## #1

in Australia in the field of advertising<sup>2</sup>

## #5

in the world in the field of advertising<sup>2</sup>



### UNESCO City of Literature

Study in Melbourne, the second city in the world to be designated a UNESCO City of Literature<sup>3</sup>



### Excellence in research

RMIT's research in communication and media studies is rated as well above world standard, one of only two Australian universities to achieve this rating<sup>4</sup>

<sup>1</sup> QS World University Ranking by Subject 2022  
<sup>2</sup> YoungGuns top 10 advertising schools worldwide  
<sup>3</sup> UNESCO.org – In 2008, Melbourne became UNESCO's second City of Literature  
<sup>4</sup> Excellence in Research Australia 2018 report by the Australian Research Council



For more information visit [rmit.edu.au/communication](https://rmit.edu.au/communication)





**Design Partner**  
of the National Gallery  
of Victoria



**Research Partner**  
of ACMI: the national  
museum of screen culture

**#1**

in Australia for  
art and design<sup>1</sup>

**#15**

in the world for  
art and design<sup>1</sup>

**#8**

in the world  
for animation<sup>2</sup>



**Exchange  
partnerships**  
with prestigious  
universities such  
as Parsons School  
of Design in NYC

<sup>1</sup> QS World University  
Rankings by Subject 2022

<sup>2</sup> Animation Career Review  
2021



For more information visit  
[rmit.edu.au/design](https://rmit.edu.au/design)

# Design and Game Design

DESIGN, INNOVATION AND TECHNOLOGY											
				\$ 2023		IELTS					
Graduate Certificate of Design Innovation and Technology	0.5 year	City	Feb Jul	\$22,080	GC192	6.5 (6.0)	-	-	-	-	-
Master of Design Innovation and Technology	2 years	City	Feb Jul	\$44,160	MC231	6.5 (6.0)	-	-	Y	-	-
GAMES AND INTERACTIVE MEDIA											
Bachelor of Design (Games)	3 years	City	Feb Jul	\$42,240	BP214	6.5 (6.0)	65%	Y	-	-	B
Bachelor of Design (Animation and Interactive Media)	3 years	City	Feb Jul	\$42,240	BP203	6.5 (6.0)	65%	Y	-	-	-
GRAPHIC AND COMMUNICATION DESIGN											
Certificate IV in Design	0.5 year	Brunswick	Feb Jul	\$18,000*	C4382	5.5 (5.0)	50%	-	-	-	-
Diploma of Graphic Design	1 year	Brunswick	Feb Jul	\$23,250*	C5409	5.5 (5.0)	50%	Y	Y	-	-
Associate Degree in Graphic Design	2 years	Brunswick	Feb Jul	\$32,640	AD022	6.0 (5.5)	60%	Y	Y	-	-
Bachelor of Design (Communication Design)	3 years	City	Feb Jul	\$41,280	BP115	6.5 (6.0)	65%	Y	Y	B, E	-
Bachelor of Design (Digital Media)	3 years	City	Feb Jul	\$41,280	BP309	6.5 (6.0)	65%	-	-	-	E
Master of Communication Design	2 years	City	Feb Jul	\$38,400	MC250	6.5 (6.0)	-	Y	-	-	-
Master of Animation, Games and Interactivity	2 years	City	Feb Jul	\$36,480	MC232	6.5 (6.0)	-	Y	Y	-	-
INDUSTRIAL, FURNITURE AND PRODUCT DESIGN											
Diploma of Product Design	2 years	Brunswick	Feb Jul	\$47,000*	C5382	5.5 (5.0)	50%	Y	Y	-	-
Associate Degree in Design (Furniture)	2 years	City	Feb	\$33,600	AD007	6.0 (5.5)	60%	Y	Y	-	-
Bachelor of Industrial Design (Honours)	4 years	City Brunswick	Feb Jul	\$44,160	BH104	6.5 (6.0)	70%	Y	Y	O	-
Bachelor of Engineering (Sustainable Systems Engineering) (Honours) / Bachelor of Industrial Design (Honours)	5 years	City Bundoora Brunswick	Feb Jul	\$46,464	BH100	6.5 (6.0)	70%	-	-	O, BB	-
Bachelor of Engineering (Mechanical Engineering) (Honours) / Bachelor of Industrial Design (Honours)	5 years	City Bundoora Brunswick	Feb	\$46,464	BH093	6.5 (6.0)	70%	-	-	O, BB	-
RESEARCH											
Master of Design (Media and Communication)	2 years	-	All year	\$33,600	MR211	6.5 (6.0)	60%	-	-	-	FF
Master of Design (Design)	2 years	-	All year	\$39,360	MR235	6.5 (6.0)	60%	-	-	-	FF
PhD (Design)	4 years	-	All year	\$39,360	DR235	6.5 (6.0)	70%	-	-	-	FF
PhD (Media and Communication)	4 years	-	All year	\$33,600	DR211	6.5 (6.0)	70%	-	-	-	FF

#### Footnotes

- B July entry may be available to students who are granted subject exemptions or advanced entry based on previous study.  
E This course incurs additional costs.  
O This is a combined bachelor and honours degree, and entry is based on senior high school qualifications. Upon completion of this program, students graduate with honours without having to undertake an additional year of study. An honours degree allows you to deepen your knowledge and develop your research, analytical and communication skills, and it is a pathway into postgraduate and higher degree by research studies.  
BB Classes for this course are delivered across the City, Bundoora and Brunswick campuses. Students may be required to attend both locations.  
FF Refer to [rmit.edu.au/how-to-apply-for-research](https://rmit.edu.au/how-to-apply-for-research) for reference.  
\* Total fee.

#### KEY:

Duration Campus Intake/s \$ 2023 2023 annual fee (\$AU) IELTS Academic IELTS Overall Band (Individual Band) – subject to change  
 RMIT Code Entry requirement (min average % or GPA) Selection task Pathways Notes

For the most up-to-date information regarding RMIT courses and pathways, please visit [rmit.edu.au](https://rmit.edu.au)

# Education

HEALTH AND PHYSICAL EDUCATION											
				\$ 2023		IELTS					
Bachelor of Health, Physical Education and Sport (Secondary)	4 years	Bundoora	Feb	\$29,760	BP319	7.5**	70%	Y	-	E, C	-
TEACHER EDUCATION											
Bachelor of Education (Primary)	4 years	Bundoora	Feb	\$29,760	BP320	7.5**	70%	Y	-	-	-
Bachelor of Education (Primary and Early Childhood Education)	4 years	Bundoora	Feb	\$29,760	BP320	7.5**	70%	Y	-	-	-
Bachelor of Education (Primary Education and Disability Inclusion)	4 years	Bundoora	Feb	\$29,760	BP320	7.5**	70%	Y	-	-	-
Bachelor of Education (Primary and Physical Education/Sport)	4 years	Bundoora	Feb	\$29,760	BP320	7.5**	70%	Y	-	-	-
Graduate Diploma in Early Childhood Education	1 year	Bundoora	Feb Jul	\$32,640	GD204	7.0 (6.5)	-	-	-	-	C
Master of Teaching Practice (Primary Education)	2 years	City	Feb	\$32,640	MC219	7.5**	-	Y	-	-	-
Master of Teaching Practice (Secondary Education)	2 years	City	Feb	\$32,640	MC220	7.5**	-	Y	-	-	-
RESEARCH											
Master of Education	2 years	Bundoora	All year	\$29,760	MR209	7.0 (6.5)	60%	-	-	-	FF
PhD (Education)	4 years	Bundoora	All year	\$29,760	DR209	7.0 (6.5)	70%	-	-	-	FF

#### Footnotes

- C This course includes a professional work placement.  
E This course incurs additional costs.  
FF Refer to [rmit.edu.au/how-to-apply-for-research](https://rmit.edu.au/how-to-apply-for-research) for reference.  
\*\* IELTS 7.5 (7.0 Reading, 7.0 Writing, 8.0 Listening, 8.0 Speaking).

#### KEY:

Duration Campus Intake/s \$ 2023 2023 annual fee (\$AU) IELTS Academic IELTS Overall Band (Individual Band) – subject to change  
 RMIT Code Entry requirement (min average % or GPA) Selection task Pathways Notes

For the most up-to-date information regarding RMIT courses and pathways, please visit [rmit.edu.au](https://rmit.edu.au)

**93.6%**

Our teacher education graduates have a 93.6% labour force participation rate, the highest of any Victorian institution<sup>1</sup>



#### Star graduates

Graduates of our health and physical education course include principals, CEOs, AFLW captains, Olympic medallists and Commonwealth Games athletes



Experience flexible learning, with intensive subjects offered in Spring and Summer semesters

**80+**

days of work-based learning during teaching placements<sup>2</sup>

<sup>1</sup> QILT.edu.au – 2021 Graduate Outcome Survey. Comparison of all Victorian universities offering teacher education at an undergraduate level

<sup>2</sup> 80+ days of work-based learning is in place when COVID-19 restrictions do not impact our students' ability to access schools



For more information visit  
[rmit.edu.au/education](https://rmit.edu.au/education)

Education



# Engineering

In 2023, our STEM courses (Science, Technology, Engineering and Maths) are going to look a bit different. At RMIT, we know how important STEM is to ensuring that we all enjoy a future that's healthy, sustainable and connected. We want our STEM students to discover their interests, pursue their passions, and graduate with the skills to navigate a complex and fast-changing world. Which is why, after extensive consultation with industry and community and months of planning, we're changing our STEM courses to offer you an even better student experience.

We'll still be offering many of the same courses in 2023; they'll just look a bit different. Some of the key features we're introducing include:

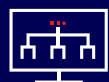
- common first-year blocks of study and stackable structures that allow you to easily switch between courses or disciplines, with your prior learning counting towards your new course of study
- the option to undertake a whole-of-semester work-integrated learning (WIL) experience, which will count towards your degree
- new majors and minors, including some cross-disciplinary specialisations. You'll even be able to study a second major in certain courses
- guaranteed pathways into certain courses, as well as early exit awards
- future technology skills, which are essential for all future STEM graduates, will be taught throughout all our courses

## Study areas

- Aerospace engineering and aviation
- Biomedical engineering
- Chemical engineering
- Civil engineering
- Computer engineering
- Electrical and electronic engineering
- Engineering management
- Environmental engineering
- Mechanical and automotive engineering
- Mechatronics and manufacturing engineering
- Sustainable systems engineering

## Top 100

Among the world's top 100 universities in civil and structural engineering and ranked 6th in Australia<sup>1</sup>



### Flexible first year

Explore different engineering fields through elective options in first year, preparing you to choose a specialisation in second year



### Pathways

A range of RMIT advanced diplomas and associate degrees provide pathways into engineering bachelor degrees



### Globally recognised

As a signatory to the International Engineering Alliance, RMIT's degrees are recognised by the Washington Accord

RMIT's engineering courses are co-designed with industry to give you practical experience and training. From the very beginning of your studies, you'll build the professional and technical skills you need to put your innovation and creativity into practice.

There are many career paths for an engineer and with RMIT you'll develop internationally recognised skills in the areas that interest you most – designing and creating products, systems, structures and services that transform the world and improve lives.

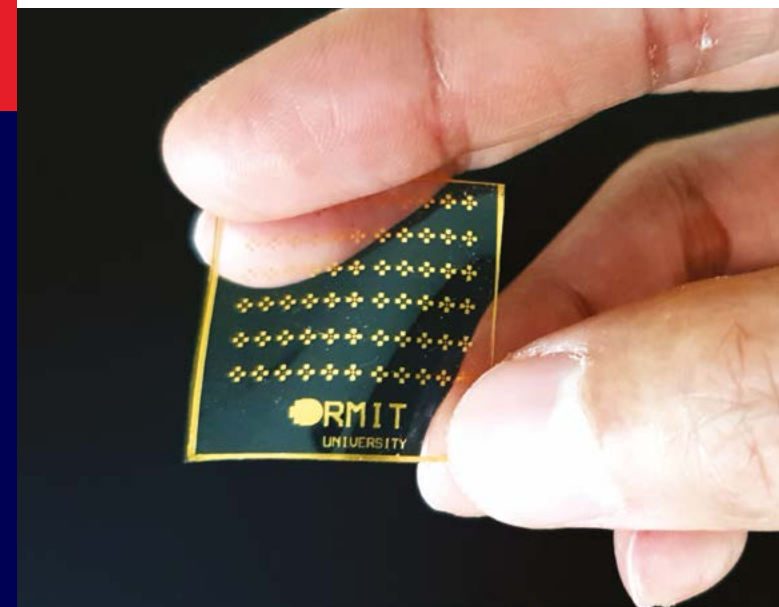


For the most up-to-date information on all our engineering courses, visit [rmit.edu.au/engineering](https://rmit.edu.au/engineering)



### Advanced Manufacturing Precinct (AMP)

Housing some of the most advanced manufacturing technologies available, the AMP brings together design and engineering, from digital design to digital manufacturing. The precinct offers high-speed multi-axis machining centres, 3D printing of advanced products and components, selective laser melting and many other cutting-edge technologies. It was in the AMP that Australia's first 3D printed custom-made spinal implant was created!



### Microelectronics fabrication

RMIT's Micro Nano Research Facility (MNRF) houses comprehensive resources for the design, modelling, fabrication and packaging of micro and nano-scale devices. The facility supports a broad range of research outcomes, and recent developments include gas-sensing capsules that can send data from inside the gut direct to a mobile phone, as well as electronic artificial skin that reacts to pain like human skin, opening the way to better prosthetics and non-invasive alternatives to skin grafts.



### Heavy Structures Lab

The Heavy Structures Lab at our Bundoora campus is equipped with extensive civil engineering facilities. The lab features: compression and tensile testing machines; controlled humidity chambers where structures and materials can be subjected to sustained loads over a long period of time; and a corrosion chamber for testing material degradation in harsh environments. It also houses structural testing frames that can accommodate beams up to six metres in length.





**Eve Smolinska**  
**Civil and Infrastructure Engineering student**

As engineers we’re creating something that is being used by every person, every day. You can see the value of it, you can see how important safety in design is and how many design concentrations there are.

It’s very interesting and very broad. In my current role I learn a lot, but I’ve actually done some of the material previously at RMIT. For example, in the steel structure course, I was able to learn how to calculate the section and member capacity of a beam and that’s actually something I’ve worked on at Robert Bird Group.

# Fashion and Textiles

FASHION AND TEXTILES										
				2023		IELTS				
Certificate IV in Custom-Made Footwear	1 year	Brunswick	Feb	\$24,500*	C4389	5.5 (5.0)	50%	-	-	-
Certificate IV in Textile Design, Development and Production	1 year	Brunswick	Feb	\$22,250*	C4404	5.5 (5.0)	50%	-	-	E
Diploma of Fashion Styling	1 year	Brunswick	Feb	\$20,500*	C5401	5.5 (5.0)	-	Y	-	-
Associate Degree in Fashion Design and Technology	2 years	Brunswick	Feb Jul	\$33,600	AD014	6.0 (5.5)	60%	Y	Y	C
Bachelor of Fashion (Design)	3 years	Brunswick	Feb Jul	\$42,240	BP328	6.5 (6.0)	65%	Y	-	-
Bachelor of Fashion (Enterprise)	3 years	Brunswick	Feb Jul	\$42,240	BP327	6.5 (6.0)	65%	-	-	-
Bachelor of Fashion and Textiles (Sustainable Innovation)	3 years	Brunswick	Feb Jul	\$42,240	BP326	6.5 (6.0)	65%	-	-	-
Bachelor of Textiles (Design)	3 years	Brunswick	Feb	\$42,240	BP121	6.5 (6.0)	65%	Y	Y	E
Graduate Certificate of Fashion (Entrepreneurship)	0.5 year	Brunswick	Feb Jul	\$19,200	GC166	6.5 (6.0)	2.5	-	-	-
Graduate Diploma of Fashion (Entrepreneurship)	1 year	Brunswick	Feb Jul	\$38,400	GD203	6.5 (6.0)	2.5	Y	-	-
Master of Fashion (Entrepreneurship)	2 years	Brunswick	Feb Jul	\$38,400	MC213	6.5 (6.0)	2.5	Y	-	-
Master of Fashion (Design)	2 years	City	Feb	\$38,400	MC246	6.5 (6.0)	2.0	Y	Y	-
MERCHANDISING										
Diploma of Visual Merchandising	1 year	City	Feb Jul	\$25,250*	C5381	5.5 (5.0)	50%	Y	Y	-
Associate Degree in Fashion and Textile Merchandising	2 years	Brunswick	Feb Jul	\$33,600	AD013	6.0 (5.5)	60%	-	Y	C
HONOURS										
Bachelor of Fashion (Design) (Honours)	1 year	City	Feb	\$42,240	BH127	6.5 (6.0)	2.0	Y	Y	K
Bachelor of Textiles (Design) (Honours)	1 year	City	Feb	\$42,240	BH124	6.5 (6.0)	2.0	Y	-	K
RESEARCH										
Master of Design (Fashion and Textiles)	2 years	City Brunswick	All year	\$33,600	MR213	6.5 (6.0)	60%	-	-	FF
Master of Technology (Fashion and Textiles)	2 years	Brunswick	All year	\$33,600	MR214	6.5 (6.0)	60%	-	-	FF
PhD (Fashion and Textiles)	4 years	Brunswick	All year	\$33,600	DR213	6.5 (6.0)	70%	-	-	FF

**Footnotes**  
A This course is only available for advanced entry.  
C This course includes a professional work placement.  
E This course incurs additional costs.  
K This is a one-year full time honours degree that is available for high-performing students to apply after finishing their undergraduate degree in the relevant discipline. An honours degree allows you to deepen your knowledge and develop your research, analytical and communication skills, and it is a pathway into postgraduate and higher degree by research studies.  
FF Refer to [rmit.edu.au/how-to-apply-for-research](http://rmit.edu.au/how-to-apply-for-research) for reference.  
\* Total fee.

**KEY:**  
 Duration Campus Intake/s 2023 2023 annual fee (\$AU) IELTS Academic IELTS Overall Band (Individual Band) – subject to change  
 RMIT Code Entry requirement (min average % or GPA) Selection task Pathways Notes

# Top 11

RMIT’s Bachelor of Fashion (Design) (Honours) is ranked in the top 11 undergraduate fashion design courses in the world<sup>1</sup>



## UN Sustainable Development Goals

All undergraduate fashion courses at RMIT are underpinned by the UN Sustainable Development Goals



## Exchange partnerships

with top fashion schools like Parsons School of Design in NYC, Amsterdam Fashion Institute and London College of Fashion



## Intensive workshops

in Paris and the US focus on the development of technical skills such as pattern making and embroidery

<sup>1</sup> 2019, the Business of Fashion review of the Best Fashion Schools – RMIT’s Bachelor of Fashion (Design) (Honours) course was ranked in the top 11 of the undergraduate ‘Fashion Design’ category, receiving all four badges of merit: Best Overall, Best in Global Influence, Best in Learning Experience and Best in Long Term Value.



For more information visit [rmit.edu.au/fashion](http://rmit.edu.au/fashion)



# Health Science

In 2023, our STEM courses (Science, Technology, Engineering and Maths) are going to look a bit different. At RMIT, we know how important STEM is to ensuring that we all enjoy a future that's healthy, sustainable and connected. We want our STEM students to discover their interests, pursue their passions, and graduate with the skills to navigate a complex and fast-changing world. Which is why, after extensive consultation with industry and community and months of planning, we're changing our STEM courses to offer you an even better student experience.

We'll still be offering many of the same courses in 2023; they'll just look a bit different. Some of the key features we're introducing include:

- common first-year blocks of study and stackable structures that allow you to easily switch between courses or disciplines, with your prior learning counting towards your new course of study
- the option to undertake a whole-of-semester work-integrated learning (WIL) experience, which will count towards your degree
- new majors and minors, including some cross-disciplinary specialisations. You'll even be able to study a second major in certain courses
- guaranteed pathways into certain courses, as well as early exit awards
- future technology skills, which are essential for all future STEM graduates, will be taught throughout all our courses

## Study areas

- Complementary medicine
- Dental studies
- Medical radiations
- Nursing



### Excellence in research<sup>1</sup>

RMIT's research is ranked as well above world standard in:

- complementary and alternative medicine
- pharmacology and pharmaceutical sciences
- medical physiology
- physical sciences



### Industry leader

RMIT is the only tertiary provider of Chinese medicine education in Victoria

Demand for innovative health professionals is high as our medical system moves from "sick care" to "health care". As a result, there's a focus on wellbeing, prevention, early detection and treatment. Health science at RMIT boasts strong industry links and purpose-built facilities, producing health practitioners with skills that are valued all around the world.

Our diverse range of health, medical and wellbeing courses teach you practical solutions to global health issues. Courses are developed in consultation with practising professionals and many offer industry placements, student clinics and work experience in Australia and overseas. Whether you're studying in our anatomy labs, nursing wards, nuclear medicine workstations, or on sports fields, our equipment, facilities and teaching staff are purposefully chosen and designed to help you get the real-world skills employers are looking for.



For the most up-to-date information on all our health science courses, visit [rmit.edu.au/health-science](https://rmit.edu.au/health-science)

- Pharmacy
- Pharmaceutical sciences
- Psychology



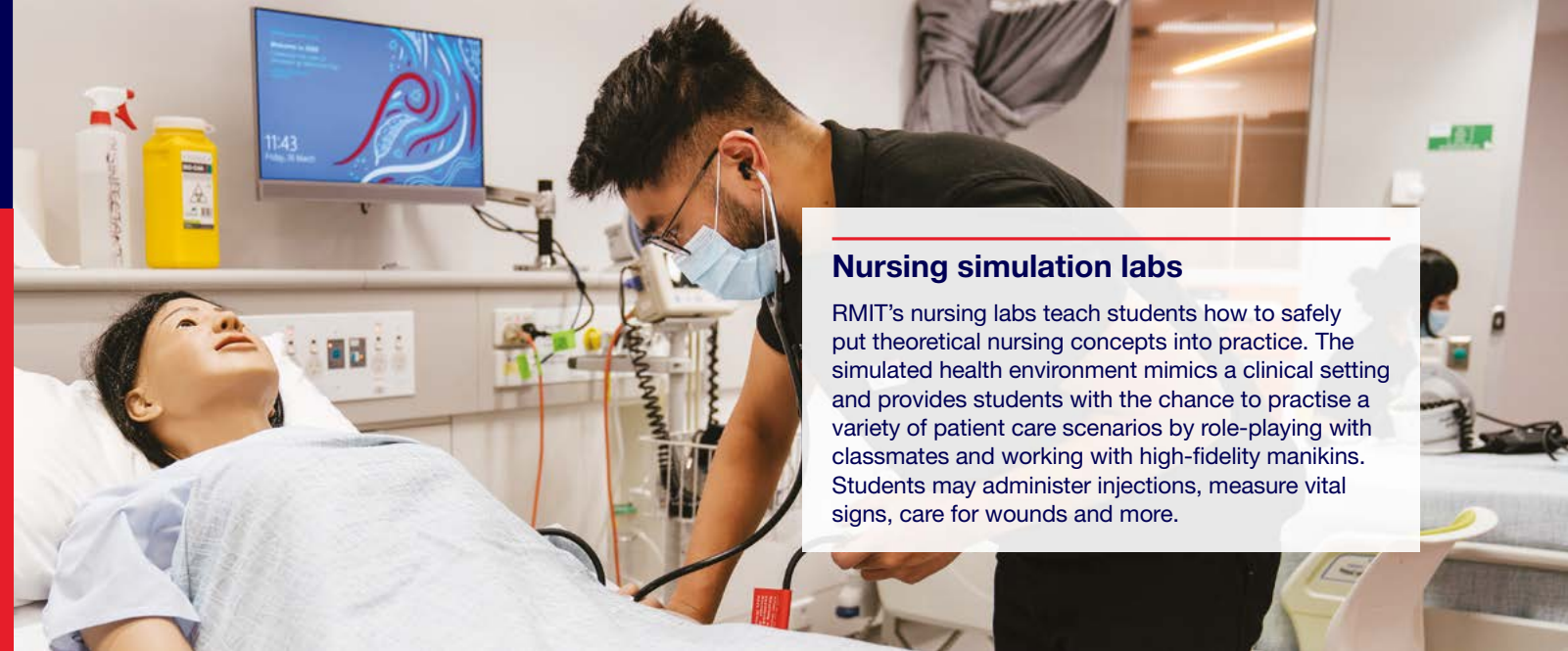
### Supporting WHO

RMIT's expertise in Chinese medicine supports a World Health Organization program to integrate traditional medical practice into public healthcare around the globe



### Cutting-edge facilities

Practise on cutting-edge equipment that is widely used in clinical centres around Australia



### Nursing simulation labs

RMIT's nursing labs teach students how to safely put theoretical nursing concepts into practice. The simulated health environment mimics a clinical setting and provides students with the chance to practise a variety of patient care scenarios by role-playing with classmates and working with high-fidelity manikins. Students may administer injections, measure vital signs, care for wounds and more.



### Radiation treatment room

Study in facilities with the latest medical radiations and IT equipment. This includes a Virtual Environment of Radiation Treatment Room (VERT). Through captivating 3D views and life-sized visualisations, VERT offers radiation therapy students a unique platform through which to learn.



### Chinese medicine clinic

Chinese medicine students use acupuncture, herbal medicine, manual and dietary therapy to treat a range of health problems. As part of their clinical training, students develop diagnosis, treatment and herbal dispensing skills by undertaking supervised clinical observation and practice at the RMIT Health Clinic.



# Information Technology

In 2023, our **STEM** courses (Science, Technology, Engineering and Maths) are going to look a bit different. At RMIT, we know how important **STEM** is to ensuring that we all enjoy a future that's healthy, sustainable and connected. We want our **STEM** students to discover their interests, pursue their passions, and graduate with the skills to navigate a complex and fast-changing world. Which is why, after extensive consultation with industry and community and months of planning, we're changing our **STEM** courses to offer you an even better student experience.

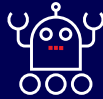
We'll still be offering many of the same courses in 2023; they'll just look a bit different. Some of the key features we're introducing include:

- common first-year blocks of study and stackable structures that allow you to easily switch between courses or disciplines, with your prior learning counting towards your new course of study
- the option to undertake a whole-of-semester work-integrated learning (WIL) experience, which will count towards your degree
- new majors and minors, including some cross-disciplinary specialisations. You'll even be able to study a second major in certain courses
- guaranteed pathways into certain courses, as well as early exit awards
- future technology skills, which are essential for all future STEM graduates, will be taught throughout all our courses

## Study areas

- Computer science
- Information systems
- Information technology

- Software engineering
- Data science



### Excellence in research

RMIT's research in artificial intelligence and image processing is rated as above world standard by the ARC



### Pathways into bachelor degrees

The Associate Degree in Information Technology provides pathways into several of RMIT's bachelor degrees in IT



### Flexible majors

RMIT's Bachelor of IT offers a range of specialisations, allowing you to tailor your learning to meet your aspirations

Information technology (IT) is a multi-billion-dollar industry that underpins almost everything we do in today's digital age. Computer scientists and IT specialists are vital to every industry and help to manage data, provide network support and maintain security. New technology empowers us to solve global challenges in healthcare, sustainability, transport and other sectors.

RMIT's IT courses let you design systems and solutions that use technology to meet the needs of the user. Combining theory and project experience, an IT qualification from RMIT allows you to explore or specialise in the rapidly growing areas of app development, cloud, mobile, social media, web systems or multimedia. Our courses give you the skills to develop IT infrastructures and support the people who use them, from network and data administration, programming and client support, to specialised skills to help lead innovation in IT.

As IT graduates continue to be in high demand globally, earning a degree in this field opens up opportunities to work all over the world.



For the most up-to-date information on all our information technology courses, visit [rmit.edu.au/it](https://rmit.edu.au/it)

# Law

## JUSTICE

<b>Bachelor of Criminal Justice</b>	3 years	City	Feb Jul	\$32,640	BP023	6.5 (6.0)	70%	-	-	C
<b>Bachelor of Criminology and Psychology</b>	3 years	City	Feb Jul	\$32,640	BP295	6.5 (6.0)	70%	-	-	-
<b>Bachelor of Justice and Criminology (Honours)</b>	1 year	City	Feb Jul	\$32,640	BH060	6.5 (6.0)	3.0	Y	-	K
<b>Graduate Certificate in Justice and Criminology</b>	0.5 year	City	Feb Jul	\$17,760	GC195	6.5 (6.0)	-	-	-	-
<b>Master of Justice and Criminology</b>	2 years	City	Feb Jul	\$35,520	MC223	6.5 (6.0)	-	-	Y	-

## LAWS

<b>Bachelor of Laws</b>	3 years	City	Feb	\$40,320	BP335	6.5 (6.0)	85%	-	Y	-
<b>Bachelor of Laws / Bachelor of Business (Information Systems)</b>	5 years	City	Feb	\$40,320	BP336	6.5 (6.0)	88%	-	-	-
<b>Bachelor of Laws / Bachelor of Business (Economics and Finance)</b>	5 years	City	Feb	\$40,320	BP339	6.5 (6.0)	88%	-	-	-
<b>Juris Doctor</b>	3 years	City	Feb Jul	\$46,080	MC161	6.5 (6.0)	2.5	-	-	-

## LEGAL ADMINISTRATION AND POLICY

<b>Bachelor of Legal and Dispute Studies</b>	3 years	City	Feb Jul	\$32,640	BP204	6.5 (6.0)	70%	-	-	-
--	---------	------	---------	----------	-------	-----------	-----	---	---	---

## RESEARCH

<b>Master of Business (Business and Law)</b>	2 years	-	All year	\$33,600	MR205	6.5 (6.0)	-	-	Y	FF
<b>Master of Social Science (Global, Urban and Social Studies)</b>	2 years	-	All year	\$30,720	MR210	6.5 (6.0)	-	-	Y	FF
<b>PhD (Global, Urban and Social Studies)</b>	4 years	-	All year	\$30,720	DR210	6.5 (6.0)	-	-	Y	FF
<b>PhD (Law)</b>	4 years	-	All year	\$37,440	DR206	6.5 (6.0)	-	-	Y	FF

### Footnotes

- C This course includes a professional work placement.  
K This is a one-year full time honours degree that is available for high-performing students to apply after finishing their undergraduate degree in the relevant discipline. An honours degree allows you to deepen your knowledge and develop your research, analytical and communication skills, and it is a pathway into postgraduate and higher degree by research studies.  
FF Refer to [rmit.edu.au/how-to-apply-for-research](https://rmit.edu.au/how-to-apply-for-research) for reference.

### KEY:

- Duration Campus Intake/s \$ 2023 2023 annual fee (\$AU) IELTS Academic IELTS Overall Band (Individual Band) – subject to change  
 RMIT Code Entry requirement (min average % or GPA) Selection task Pathways Notes

# 30+

RMIT has more than 30 years of experience in justice training and education



### 50-day work placement

Undertake a 50-day work placement in your final year of the Bachelor of Criminal Justice



### Law Students' Society

The RMIT Law Students' Society runs social, education and careers events year-round



### Diverse electives in Justice and Criminology:

- Forensic studies
- Drug-related crime
- International policing
- Youth justice
- Terrorism



For more information visit [rmit.edu.au/law](https://rmit.edu.au/law)

## #4

in Australia for communication and media studies<sup>1</sup>

## #40

in the world for communication and media studies<sup>1</sup>



### Official Research Partner

of ACMI: the national museum of screen culture



### Excellence in research<sup>2</sup>

RMIT's research in communication and media studies is rated as well above world standard, just one of two Australian universities to achieve this rating



### Live music capital

Study in Melbourne, which has more live music venues per capita than any other city in the world<sup>3</sup>

<sup>1</sup> 2021 QS World University Rankings by Subject

<sup>2</sup> 2018 Excellence in Research Australia Report by the Australian Research Council

<sup>3</sup> Music Victoria 2017 Census Report



For more information visit [rmit.edu.au/media](https://rmit.edu.au/media)

# Media

MUSIC AND AUDIOVISUAL											
Bachelor of Arts (Music Industry)	3 years	City	Feb Jul	\$33,600	BP047	6.5 (6.0)	65%	-	-	-	B
SCREEN AND MEDIA											
Diploma of Screen and Media (Content Creation)	1 year	City	Feb	\$24,000*	C5412	5.5 (5.0)	-	Y	-	-	-
Diploma of Screen and Media (Animation, Gaming and Visual Effects)	1 year	City	Feb Jul	\$23,250*	C5413	5.5 (5.0)	-	-	-	-	-
Advanced Diploma of Screen and Media (Directing)	1 year	City	Feb	\$24,000*	C6172	5.5 (5.0)	-	Y	Y	A	A
Advanced Diploma of Screen and Media (Content Creation and Design)	1 year	City	Feb Jul	\$24,000*	C6173	5.5 (5.0)	-	Y	Y	A	A
Associate Degree in Screen and Media Production	2 years	City	Feb Jul	\$32,640	AD017	6.0 (5.5)	60%	Y	-	-	-
Bachelor of Communication (Media)	2.5 years 3 years	City	Jul Feb Jul	\$43,776 (2.5 years), \$36,480 (3 years)	BP221	6.5 (6.0)	65%	-	Y	L,B	L,B
Master of Media	2 years	City	Feb Jul	\$37,440	MC188	6.5 (6.0)	2.5	-	-	-	-
HONOURS											
Bachelor of Media and Communication (Honours)	1 year	City	Feb	\$36,480	BH066	6.5 (6.0)	3	Y	-	K	K

#### Footnotes

A This course is only available for advanced entry.

B July entry may be available to students who are granted course/subject exemptions or advanced entry based on previous study.

K This is a one-year full time honours degree that is available for high-performing students to apply after finishing their undergraduate degree in the relevant discipline. An honours degree allows you to deepen your knowledge and develop your research, analytical and communication skills, and it is a pathway into postgraduate and higher degree by research studies.

L This version of the communication course is meant for year one commencement for July entry. The course structure is accelerated. It consist of six semesters over 2.5 calendar years by undertaking four first-year courses in intensive mode over spring (Nov/Dec) and (Jan/Feb) summer semesters.

\* Total fee.

#### KEY:

Duration Campus Intake/s \$ 2023 2023 annual fee (\$AU) IELTS Academic IELTS Overall Band (Individual Band) – subject to change RMIT Code Entry requirement (min average % or GPA) Selection task Pathways Notes

# Social Science

INTERNATIONAL STUDIES											
Bachelor of International Studies (Development)	3 years	City	Feb Jul	\$ 31,680	BP332 BP332DEV BP332GS BP332LAN	6.5 (6.0)	65%	-	-	-	-
Bachelor of International Studies (Global Security)											
Bachelor of International Studies (Languages)											
Master of Global Studies	2 years	City	Feb Jul	\$35,520	MC283	6.5 (6.0)	-	-	-	-	-
LANGUAGES, TRANSLATING AND INTERPRETING											
Diploma of Interpreting (LOTE-English)	1 year	City	Feb Jul	\$12,250*	C5364	6.0 (5.5)	50%	Y	-	-	-
Advanced Diploma of Interpreting (LOTE-English)	1 year	City	Feb Jul	\$14,250*	C6154	6.5 (6.0)	50%	Y	Y	-	-
Graduate Certificate in Translating and Interpreting	0.5 year	City	Feb Jul	\$17,760	GC185	6.5 (6.0)	-	Y	-	-	-
Graduate Diploma in Translating and Interpreting	1 year	City	Feb Jul	\$35,520	GD168	6.5 (6.0)	-	Y	Y	-	-
Master of Translating and Interpreting	2 years	City	Feb Jul	\$35,520	MC214	6.5 (6.0)	-	Y	Y	-	-
PUBLIC POLICY											
Master of Public Policy	2 years	City	Feb Jul	\$35,520	MC216	6.5 (6.0)	2.5	-	-	-	-
SOCIAL WORK											
Bachelor of Social Work (Honours) / Bachelor of Social Science (Psychology)	5 years	City	Feb	\$32,640	BH106	7.0 (7.0)	70%	-	-	O	O
Bachelor of Youth Work and Youth Studies	3 years	City	Feb Jul	\$32,640	BP322	6.5 (6.0)	70%	-	-	C	C
Bachelor of Social Work (Honours)	4 years	City	Feb	\$32,640	BH105	7.0 (7.0)	70%	-	-	O	O
Master of Social Work	2 years	City	Feb	\$35,520	MC150	7.0 (7.0)	-	Y	-	AA	AA
HONOURS											
Bachelor of Arts (International Studies) (Honours)	1 year	City	Feb Jul	\$32,640	BH049	6.5 (6.0)	3.0	Y	-	K	K
RESEARCH											
Master of Social Science (Global, Urban and Social Studies)	2 years	-	All year	\$30,720	MR210	6.5 (6.0)	60%	-	-	FF	FF
PhD (Global, Urban and Social Studies)	4 years	-	All year	\$30,720	DR210	6.5 (6.0)	70%	-	-	FF	FF

#### Footnotes

C This course includes a professional work placement.

K This is a one-year full time honours degree that is available for high-performing students to apply after finishing their undergraduate degree in the relevant discipline. An honours degree allows you to deepen your knowledge and develop your research, analytical and communication skills, and it is a pathway into postgraduate and higher degree by research studies.

O This is a combined bachelor and honours degree, and entry is based on senior high school qualifications. Upon completion of this program, students graduate with honours without having to undertake an additional year of study. An honours degree allows you to deepen your knowledge and develop your research, analytical and communication skills, and it is a pathway into postgraduate and higher degree by research studies.

AA This course has limited spaces and applications must be submitted by 1 November (in any given year) in order to be considered.

FF Refer to [rmit.edu.au/how-to-apply-for-research](https://rmit.edu.au/how-to-apply-for-research) for reference.

\* Total fee.

#### KEY:

Duration Campus Intake/s \$ 2023 2023 annual fee (\$AU) IELTS Academic IELTS Overall Band (Individual Band) – subject to change RMIT Code Entry requirement (min average % or GPA) Selection task Pathways Notes

## #1

RMIT is ranked number one in the world for its efforts to reduce inequalities<sup>1</sup>

## Top 100

Among the world's top 100 universities in development studies<sup>2</sup>

## 40+

RMIT has been teaching social work and youth work for more than 40 years



Learn from experts with strong links to industry

<sup>1</sup> Inaugural Times Higher Education University Impact Rankings. This ranking focuses on measuring universities' social, environmental and economic impact and progress towards the United Nations' Sustainable Development Goals

<sup>2</sup> QS World University Rankings by Subject 2022



For more information visit [rmit.edu.au/social-science](https://rmit.edu.au/social-science)



# Science

In 2023, our STEM courses (Science, Technology, Engineering and Maths) are going to look a bit different. At RMIT, we know how important STEM is to ensuring that we all enjoy a future that's healthy, sustainable and connected. We want our STEM students to discover their interests, pursue their passions, and graduate with the skills to navigate a complex and fast-changing world. Which is why, after extensive consultation with industry and community and months of planning, we're changing our STEM courses to offer you an even better student experience.

We'll still be offering many of the same courses in 2023; they'll just look a bit different. Some of the key features we're introducing include:

- common first-year blocks of study and stackable structures that allow you to easily switch between courses or disciplines, with your prior learning counting towards your new course of study
- the option to undertake a whole-of-semester work-integrated learning (WIL) experience, which will count towards your degree
- new majors and minors, including some cross-disciplinary specialisations. You'll even be able to study a second major in certain courses
- guaranteed pathways into certain courses, as well as early exit awards
- future technology skills, which are essential for all future STEM graduates, will be taught throughout all our courses

## Study areas

- Applied science
- Biotechnology and biological sciences
- Chemistry
- Environmental science
- Food science and technology
- Mathematics and statistics
- Nanotechnology
- Physics
- Surveying and geospatial sciences
- Space science



### World #1

RMIT was named Geospatial Research Institute of the Year in 2019 by the Geospatial World Forum



### Find your niche

RMIT offers the only stand-alone space science degree in Australia



### Excellence in research<sup>1</sup>

RMIT's research is rated as well above world standard in:

- Environmental science
- Physical sciences
- Clinical sciences
- Microbiology
- Analytical chemistry
- Macromolecular and materials chemistry
- Physical chemistry

Science is about exploration and discovery – both in the lab and in the field. From monitoring the spread of infectious disease to exploring the vast reaches of space, every area of science plays a crucial role in helping us understand why and how things work. While RMIT offers extensive facilities and laboratories on campus, our students go beyond the classroom and apply their learning to real-world problems.

Working in teams during field studies and excursions that take place all over the world, our students gain hands-on experience in all aspects of scientific practice. Whether you want to study chemistry or data, food technology or physics, RMIT has the cutting-edge facilities and experienced staff to help you make a scientific breakthrough.

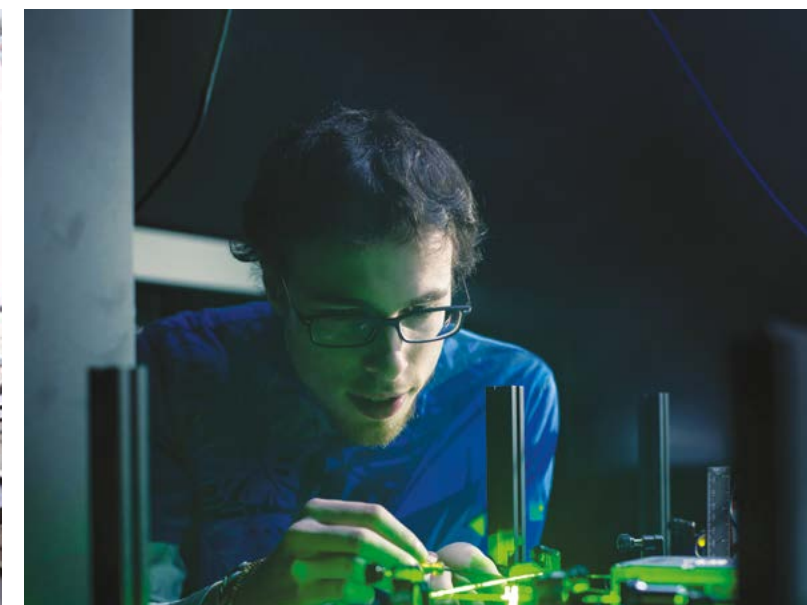


For the most up-to-date information on all our science courses, visit [rmit.edu.au/science](https://rmit.edu.au/science)



## Space Industry Hub

The Space Industry Hub is Victoria's central access point for industry to engage with academics, researchers and students to develop space-related technologies. Students have the opportunity to work in multidisciplinary teams pursuing research and innovation programs in areas such as space data analytics, advanced satellite systems and sensors, artificial intelligence, Earth observation, position, navigation and timing, material science for space environments and communication technologies.



## Food Innovation and Research Centre

The RMIT Food Innovation and Research Centre enables students to develop practical skills in an industry-standard setting. The centre includes a production facility, commercial kitchen, sensory evaluation lab and research lab. Students have access to a modern pilot plant that simulates industrial production, as well as a range of high-tech food preparation and processing equipment.

## Centre for Nanoscale Biophotonics (CNBP)

The CNBP brings together a team of physicists, chemists and biologists. The team aims to control nanoscale interactions between light and matter, enabling it to probe the complex nanoenvironments within living organisms. This allows our team of biological scientists to understand how single cells react to and communicate with their surroundings.





For information on how to apply, visit

[rmit.edu.au/study-with-us/international-students/apply-to-rmit-international-students](https://rmit.edu.au/study-with-us/international-students/apply-to-rmit-international-students)

## Contact us

### In person

330 Swanston Street  
(cnr La Trobe Street)  
Melbourne VIC 3000

### Online

[rmit.edu.au/contact-us](https://rmit.edu.au/contact-us)

### By mail

RMIT University  
GPO Box 2476  
Melbourne VIC 3001

### By phone

+61 3 9925 2260

This guide provides information about RMIT's Melbourne-based programs for prospective international students. Prepared March 2022. Every effort has been made to ensure the information contained in this publication is accurate and current at the date of printing. For the most up-to-date information, please refer to the RMIT University website before lodging your application. RMIT University CRICOS Provider Code: 00122A | RMIT Training Pty Ltd CRICOS Provider Code: 01912G | RMIT University RTO Code: 3046

Connect with RMIT

